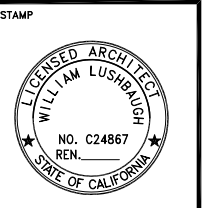


HAYWARD STATION FLOOR PLAN

LushDesignStudio

WILLIAM LUSHBAUGH AIA ARCHITECT
17191 CITRON IRVINE, CALIFORNIA 92612
949-584-2166 blushbaugh@aol.com

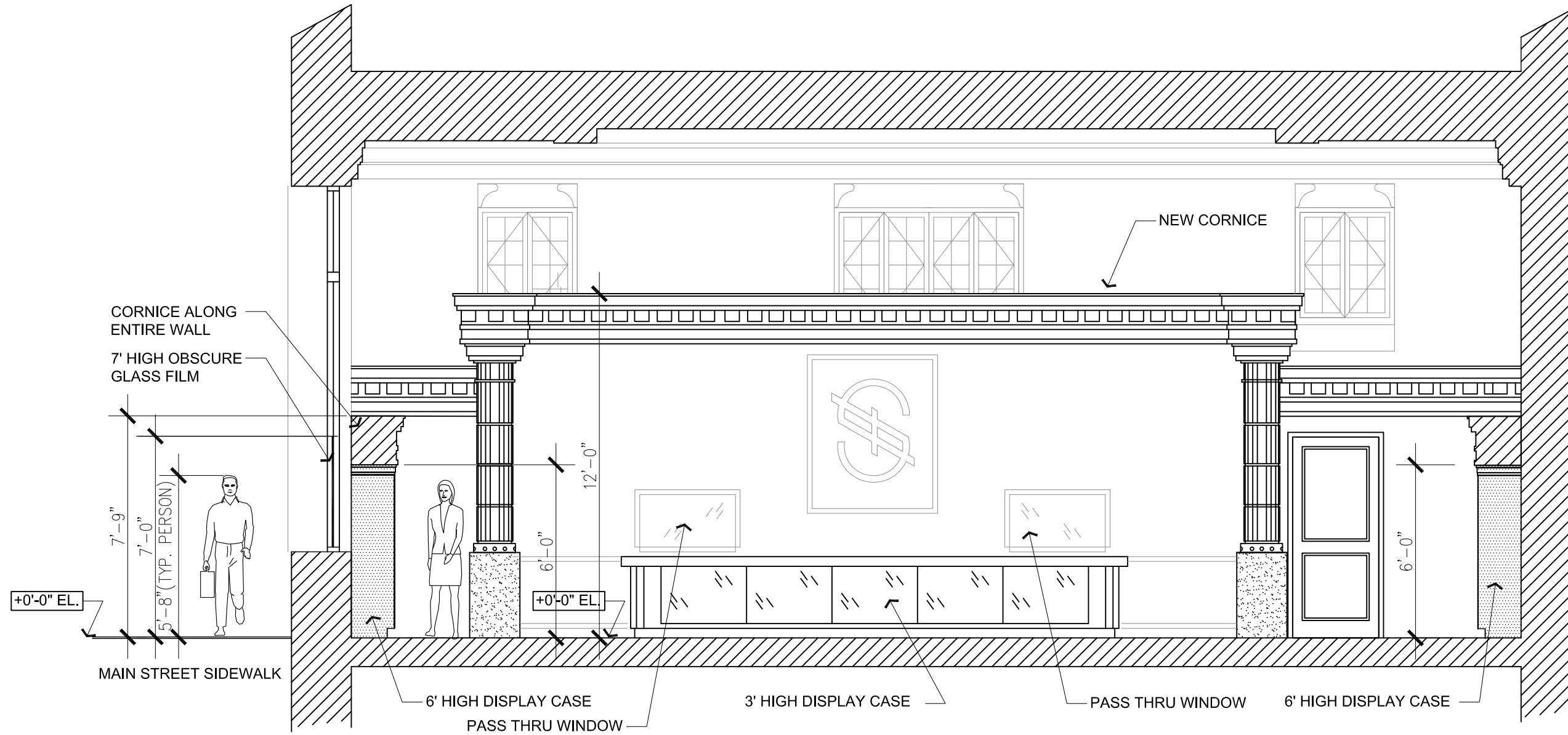
HAYWARD STATION
CANNABIS RETAIL DISPENSARY
TENANT IMPROVEMENTS
1004 B STREET HAYWARD, CA. 94541



REVISIONS:

△	
△	
△	
△	
△	
△	

DATE: 2/4/19
JOB NO: 1/8"=1'-0"
DRAWN BY: B. L.
CHECKED BY:
SCALE:
SHEET NO:

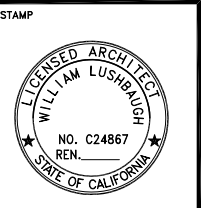


NORTH INTERIOR VIEW SALES AREA

LushDesignStudio

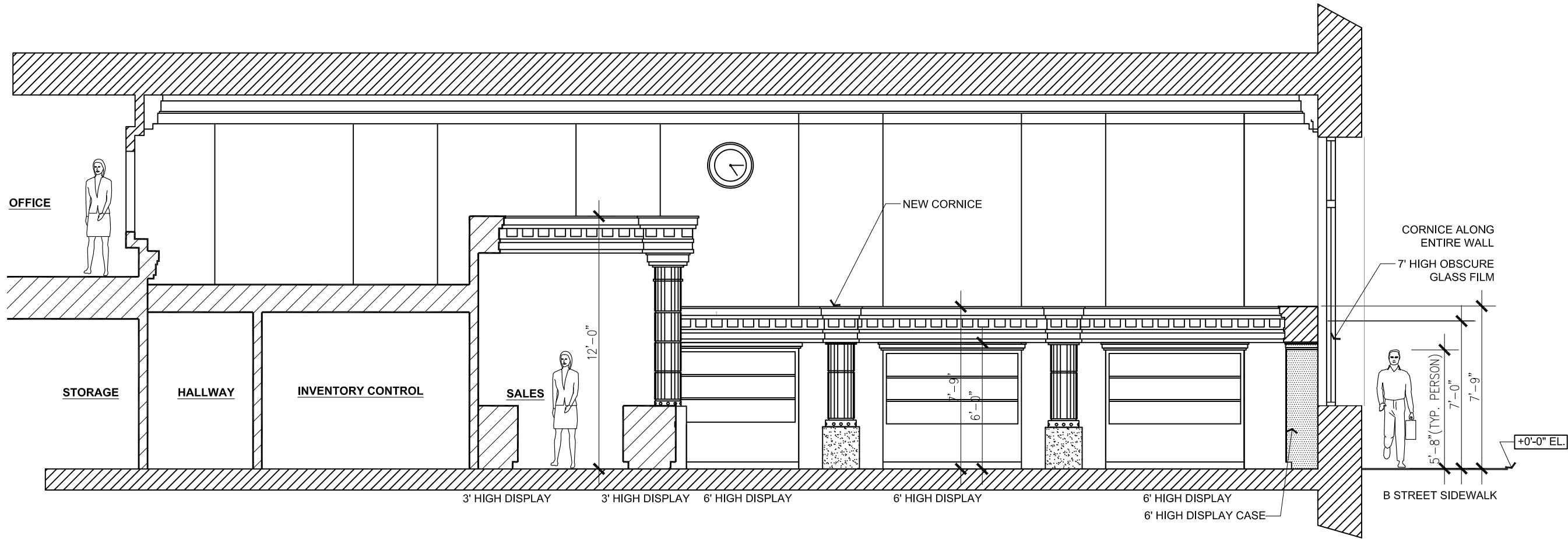
WILLIAM LUSHBAUGH, AIA, ARCHITECT
 17191 CITRON IRVINE, CALIFORNIA 92612
 949-584-2166 blushbaugh@aol.com

HAYWARD STATION
 CANNABIS RETAIL DISPENSARY
 TENANT IMPROVEMENTS
 1004 B STREET HAYWARD, CA. 94541



REVISIONS:

DATE: 2/4/19
 JOB NO: 1/8"=1'-0"
 DRAWN BY: B. L.
 CHECKED BY:
 SCALE:
 SHEET NO:

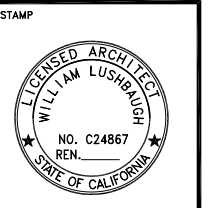


WEST INTERIOR VIEW SALES AREA

LushDesignStudio

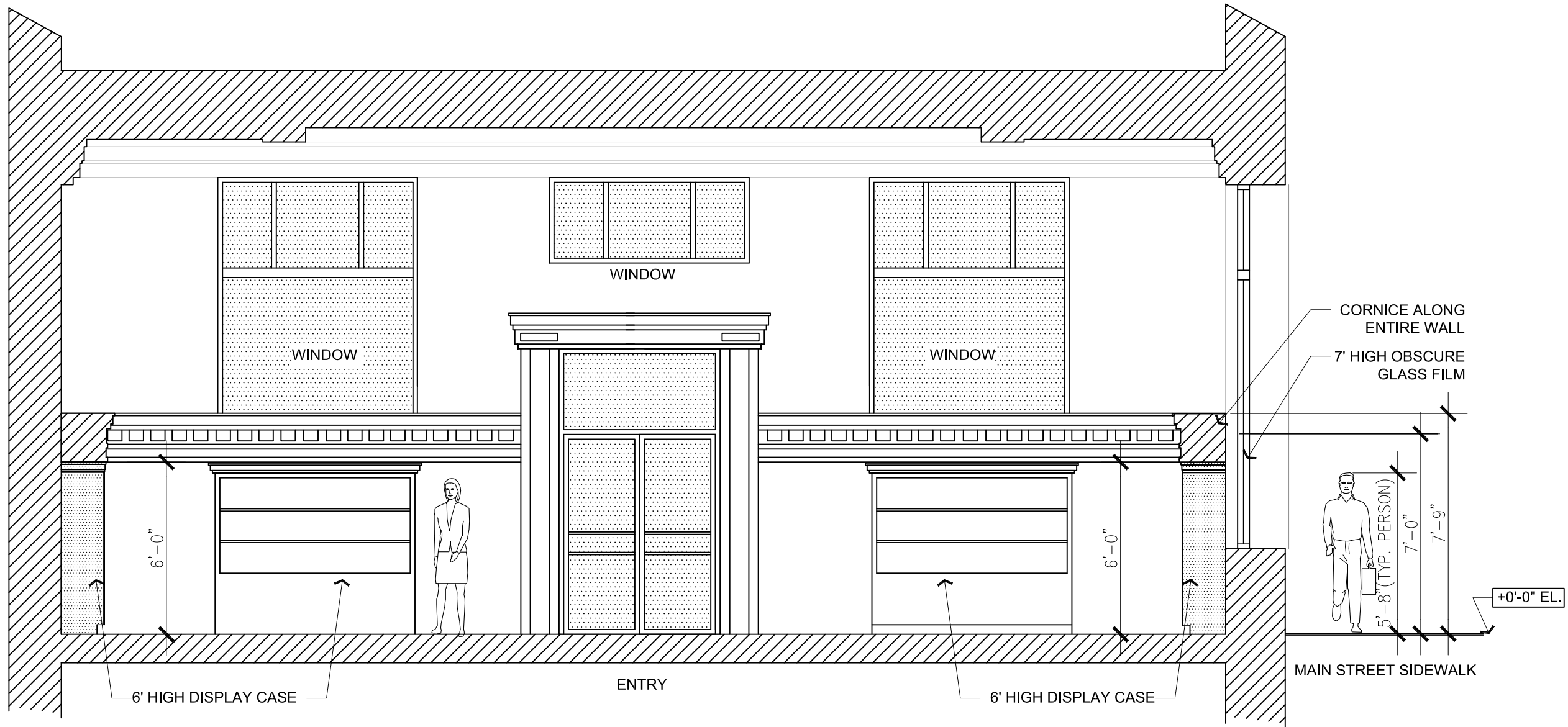
WILLIAM LUSHBAUGH AIA, ARCHITECT
 17191 CITRON IRVINE, CALIFORNIA 92612
 949-584-2166 blushbaugh@aol.com

HAYWARD STATION
 CANNABIS RETAIL DISPENSARY
 TENANT IMPROVEMENTS
 1004 B STREET HAYWARD, CA. 94541



REVISIONS:

DATE: 2/4/19
 JOB NO: 1/8"=1'-0"
 DRAWN BY: B. L.
 CHECKED BY:
 SCALE:
 SHEET NO:

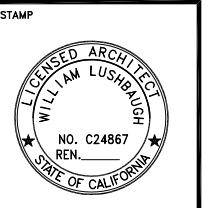


SOUTH INTERIOR VIEW SALES AREA

LushDesignStudio

WILLIAM LUSHBAUGH AIA, ARCHITECT
 17191 CITRON IRVINE, CALIFORNIA 92612
 949-584-2166 blushbaugh@aol.com

HAYWARD STATION
 CANNABIS RETAIL DISPENSARY
 TENANT IMPROVEMENTS
 1004 B STREET HAYWARD, CA. 94541



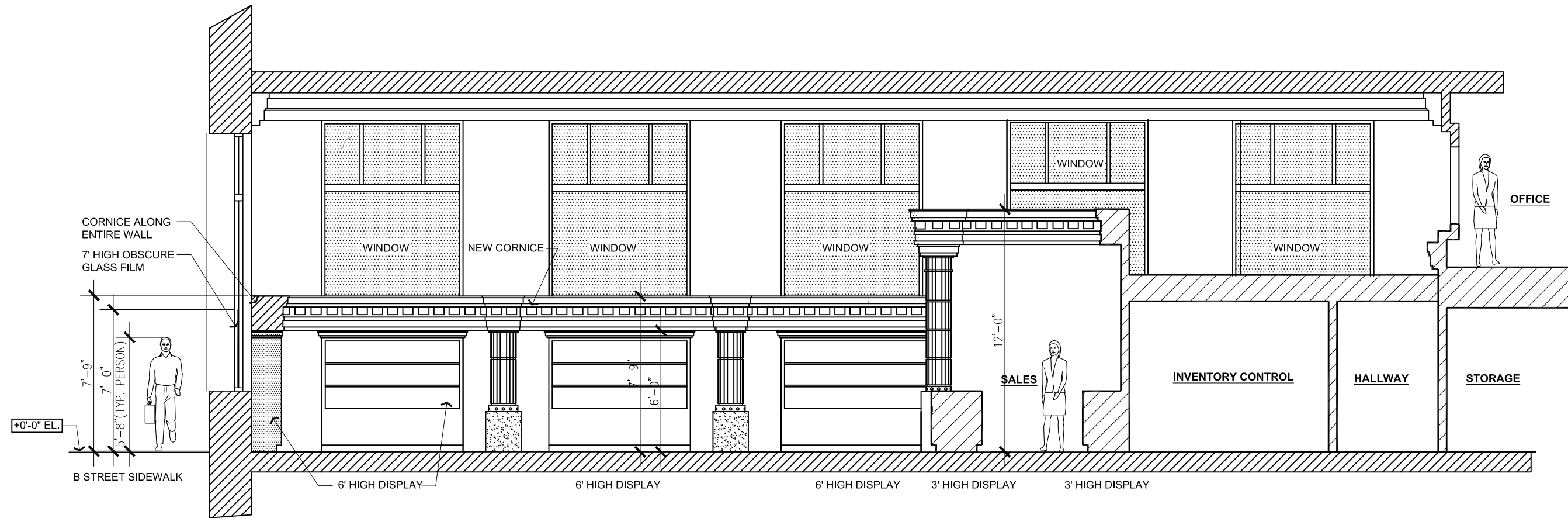
REVISIONS:

DATE: 2/4/19
 JOB NO: 1/8"=1'-0"
 DRAWN BY: B. L.
 CHECKED BY:
 SCALE:
 SHEET NO:

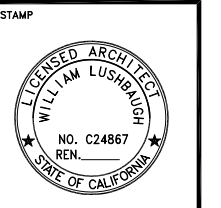
LushDesignStudio

WILLIAM LUSHBAUGH AIA, ARCHITECT
 17191 CITRON IRVINE, CALIFORNIA 92612
 949-584-2166 blushbaugh@aol.com

HAYWARD STATION
 CANNABIS RETAIL DISPENSARY
 TENANT IMPROVEMENTS
 1004 B STREET HAYWARD, CA. 94541



EAST INTERIOR VIEW SALES AREA

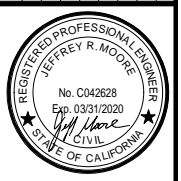


REVISIONS:

DATE: 2/4/19
 JOB NO: 1/8"=1'-0"
 DRAWN BY: B. L.
 CHECKED BY:
 SCALE:
 SHEET NO:

GREENWOOD & MOORE, INC
 Civil Engineers • Designers
 Land Surveyors • Planners
 3111 Castro Valley Blvd., Ste. 200, Castro Valley, California 94546
 Tel: 510-981-2772 Fax: 510-981-8813 www.greenwoodmoore.com

No.	Description	Date



HAYWARD STATION
 1004 B. STREET
 HAYWARD, CA 94541

LEFT ELEVATIONS

CHECKED BY	JM
DRAWN BY	KH
SCALE	As indicated
DATE	11/13/2018
PROJECT NO.	2018.052
PHASE NO.	
SHEET NO.	A510

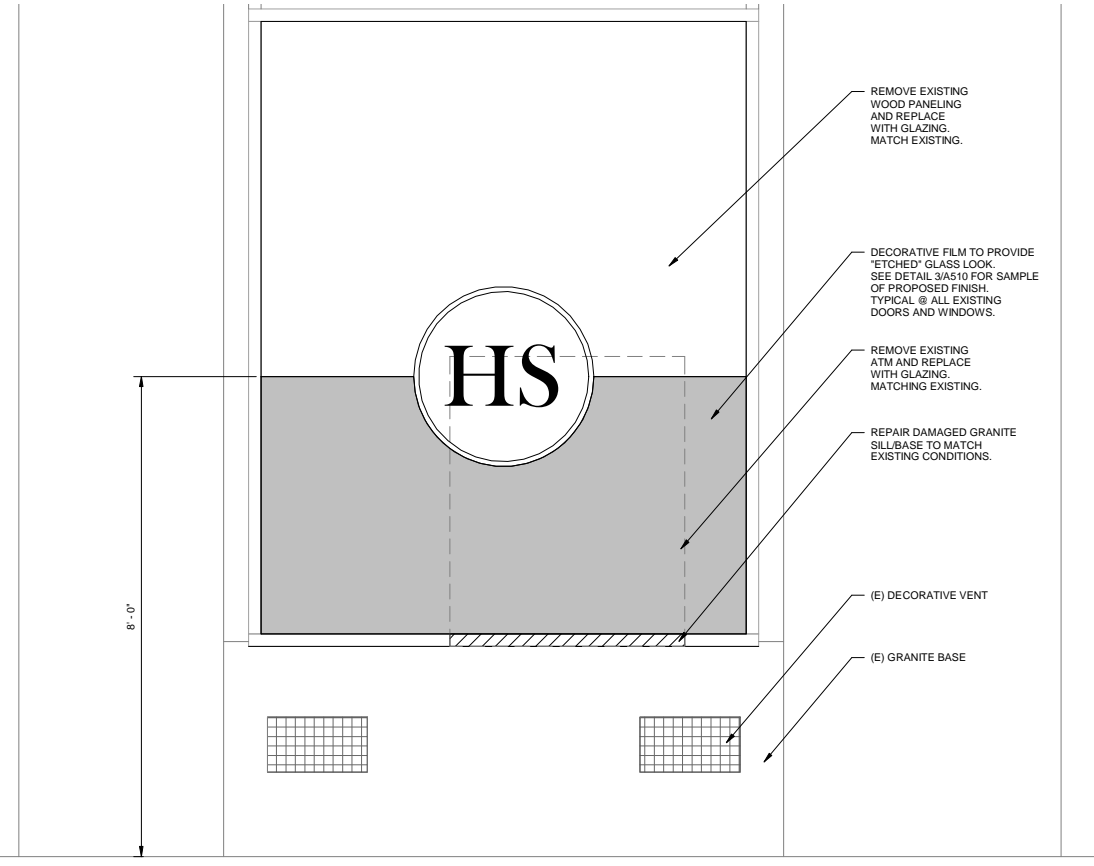


REMOVE EXISTING WOOD PANELING AND REPLACE WITH GLAZING. MATCH EXISTING. SEE 2/A510

REMOVE EXISTING ATM AND REPLACE WITH GLAZING. MATCHING EXISTING. SEE 2/A510

DECORATIVE FILM TO PROVIDE 'ETCHED' GLASS LOOK. SEE DETAIL 3/A510 FOR SAMPLE OF PROPOSED FINISH. TYPICAL @ ALL EXISTING DOORS AND WINDOWS.

1 MAIN STREET



2 ATM - PROPOSED & TYPICAL WINDOW
 3/4" = 1'-0"



3 'ETCHED GLASS' CONCEPT
 1" = 1'-0"

ALL SEALS, REGIONS, AND AGREEMENTS AND PLANS SPECIFIED IN THE DRAWINGS ARE OWNED BY AND THE PROPERTY OF THE OFFICE AND SHALL BE KEPT CONFIDENTIAL. ANY REPRODUCTION, COPIES, OR DISSEMINATION OF ANY PART OF THIS DOCUMENT WITHOUT THE WRITTEN PERMISSION OF GREENWOOD & MOORE, INC. IS STRICTLY PROHIBITED. THE DRAWINGS AND SPECIFICATIONS SHALL BE USED ONLY FOR THE PROJECT AND SITE SPECIFICALLY IDENTIFIED HEREIN. ANY CHANGES TO THE DRAWINGS OR SPECIFICATIONS SHALL BE MADE ONLY BY THE ORIGINAL DESIGNER. ANY REVISIONS TO THE DRAWINGS SHALL BE INDICATED BY A REVISION CIRCLE AND NUMBER. ANY CHANGES TO THE SPECIFICATIONS SHALL BE INDICATED BY A REVISION CIRCLE AND NUMBER. ANY CHANGES TO THE DRAWINGS OR SPECIFICATIONS SHALL BE INDICATED BY A REVISION CIRCLE AND NUMBER. ANY CHANGES TO THE DRAWINGS OR SPECIFICATIONS SHALL BE INDICATED BY A REVISION CIRCLE AND NUMBER.

C:\Users\jmoore\Documents\2018\052_Hayward Station_Lhs27849.rvt 11/13/2018 4:51:48 PM



THE
STATION

HAYWARD



A Modern Hayward Retail Experience, Inspired By
Its Historic Home, And The Art Deco Era



THE
STATION



THE
STATION

NuetraFace Demi

ABCDEFGHIJKLM
nopqrstuvwxyz
0123456789!%&





Attachment IV







B STREET



THE STATION

1004



THE STATION



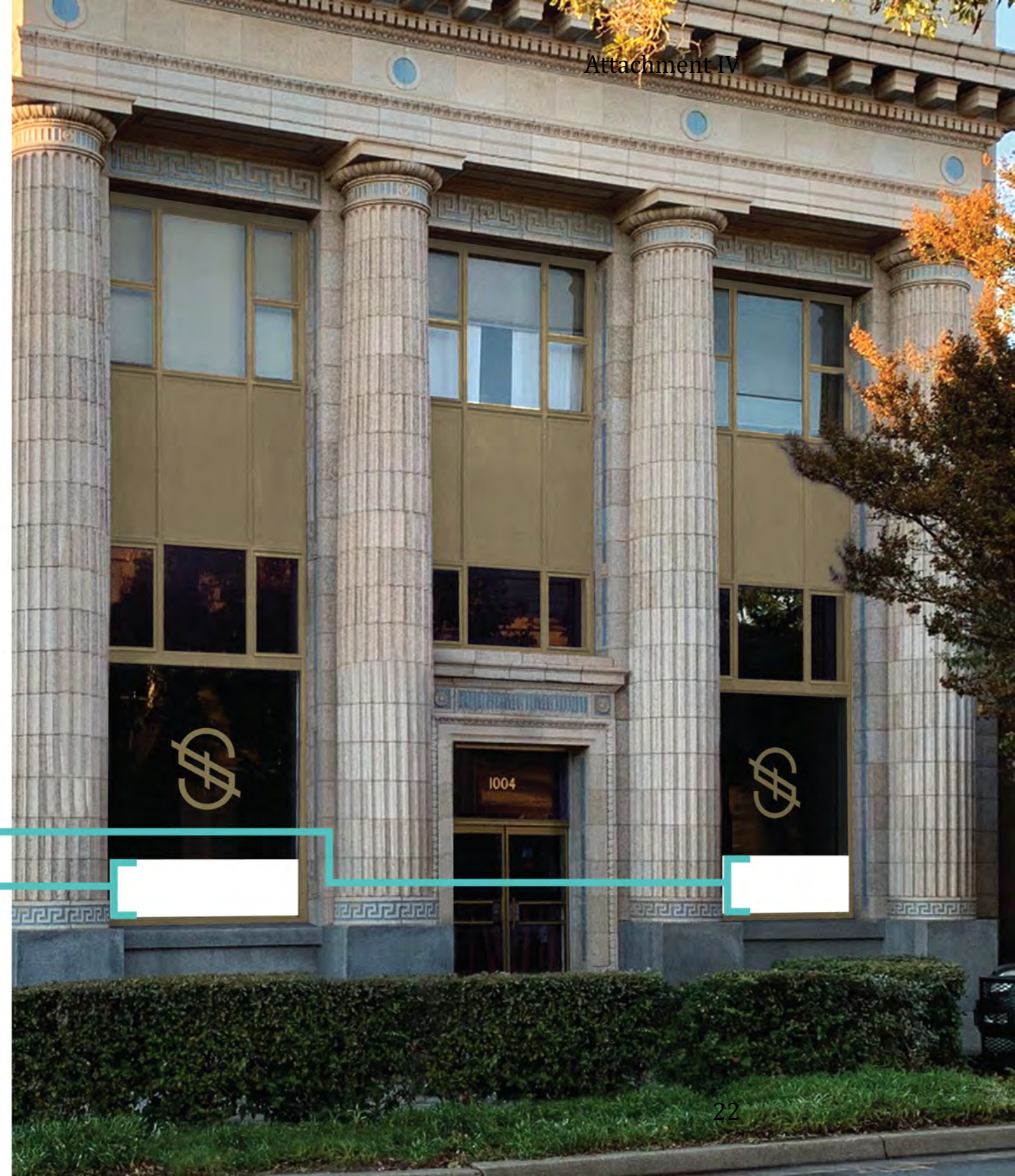
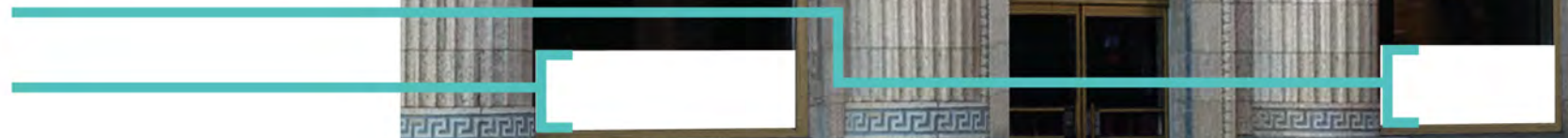




Exterior Blade Signage 14' H X 30" W 12' D

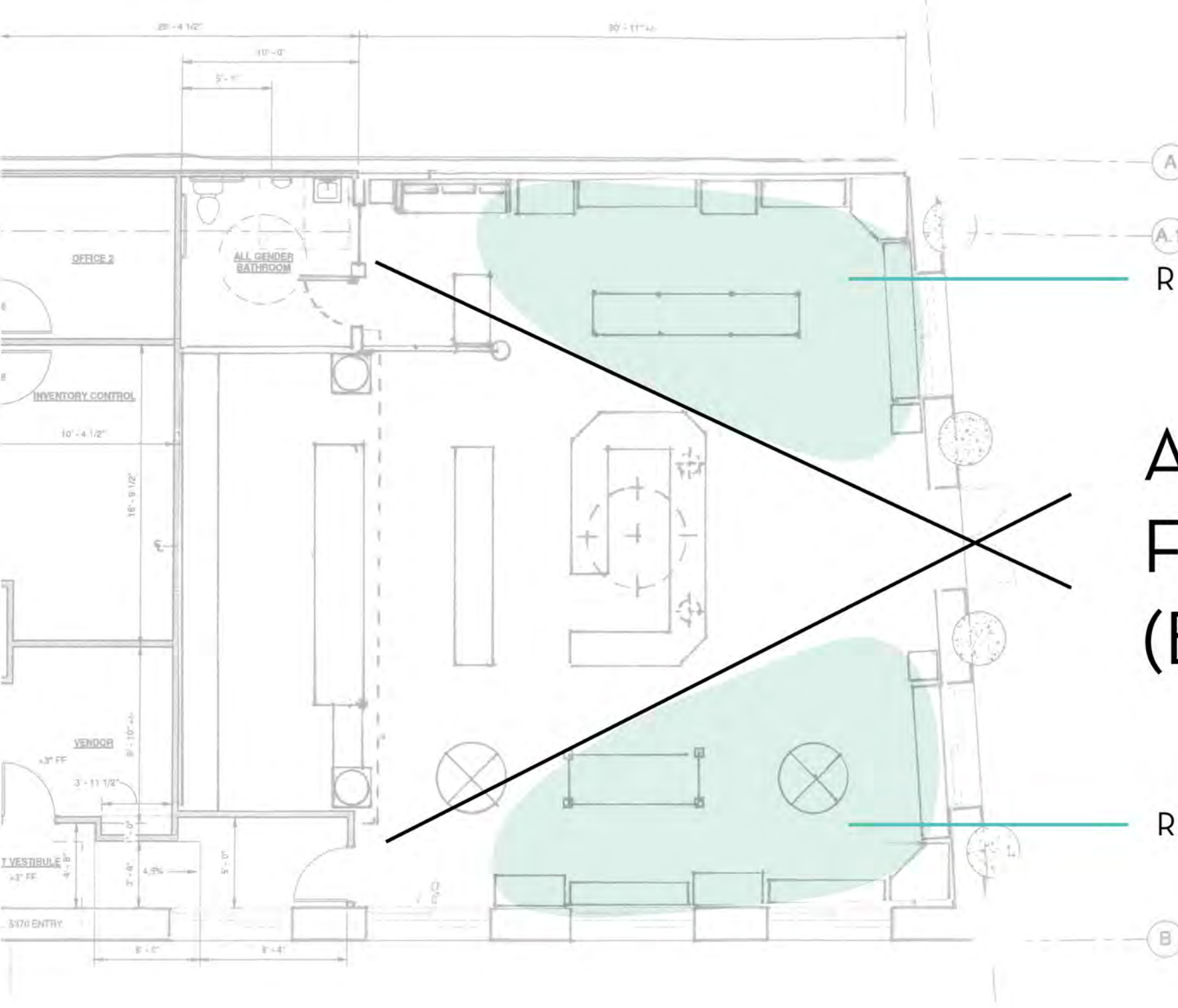


Obscured Glass Area
Up To 7.0' on All
Exterior Windows





Attachment IV



A

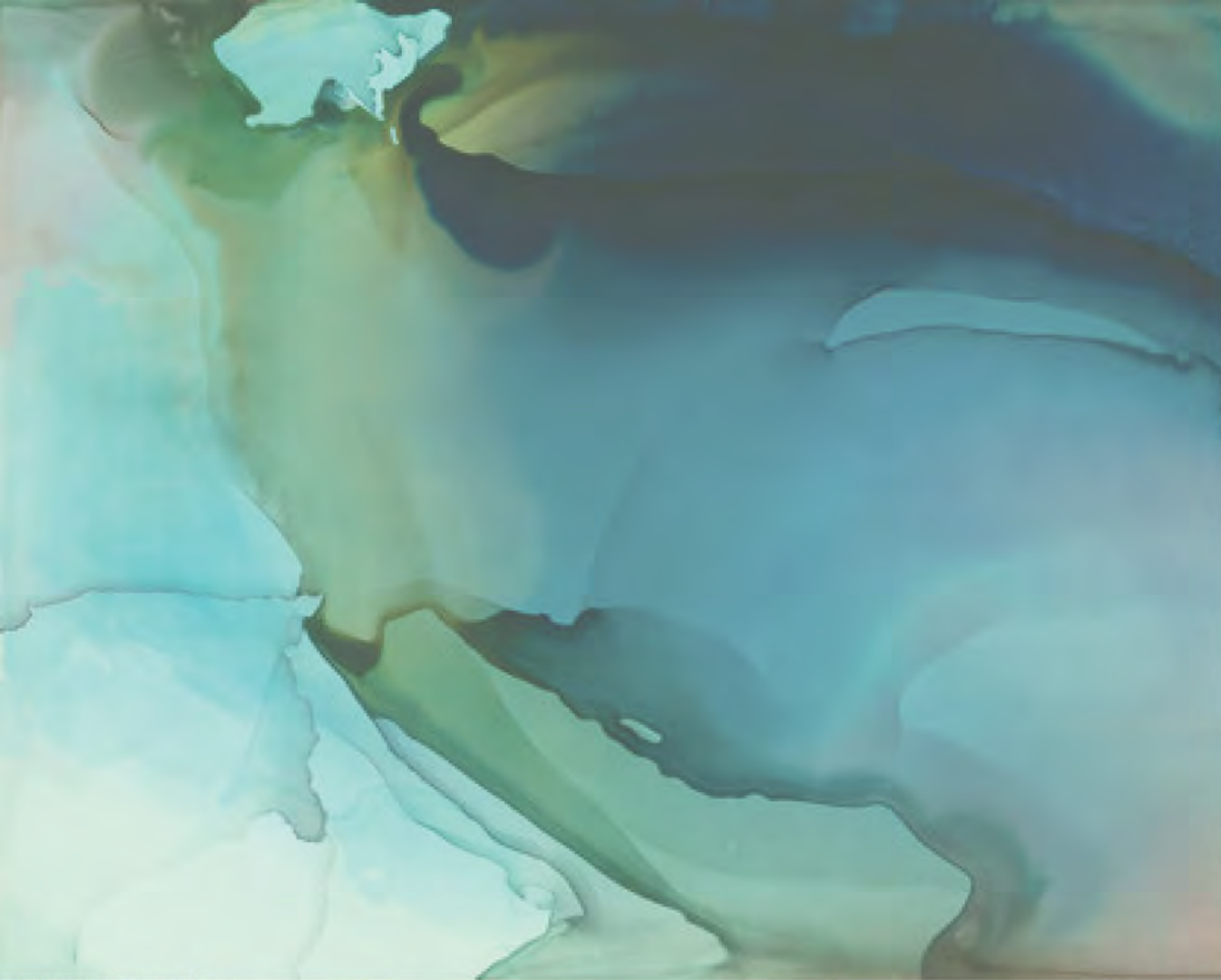
A.1

RETAIL DISPLAY AREA

Approximate
Field Of Vision
(Both Doors Open)

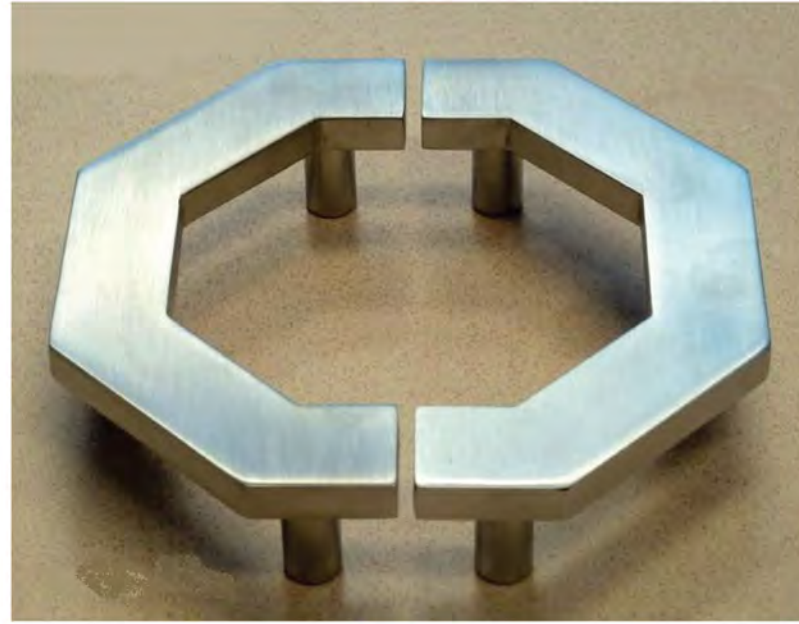
RETAIL DISPLAY AREA

B



Wall Art Style

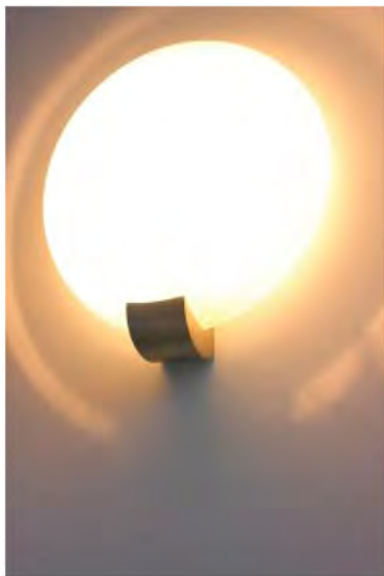
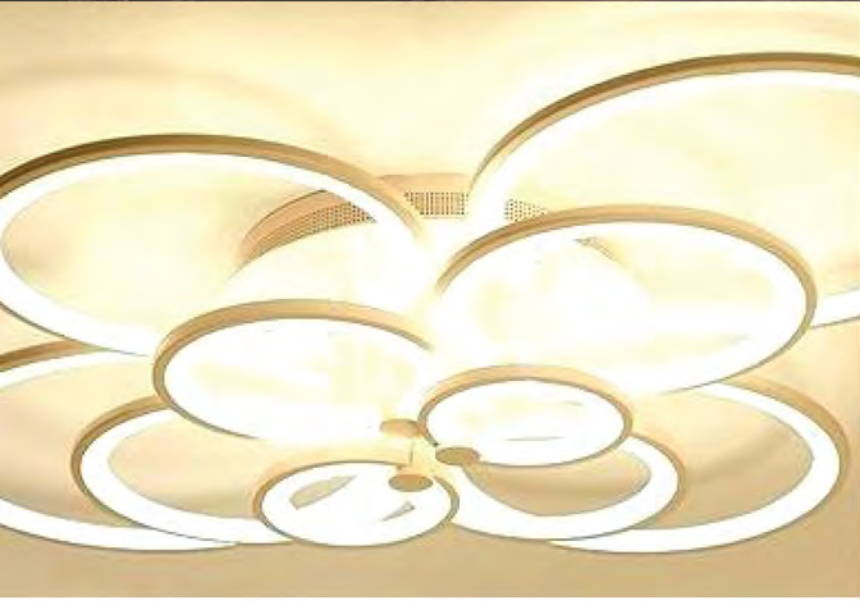




Attachment IV



Furniture Style



Lighting Style



THANK YOU