

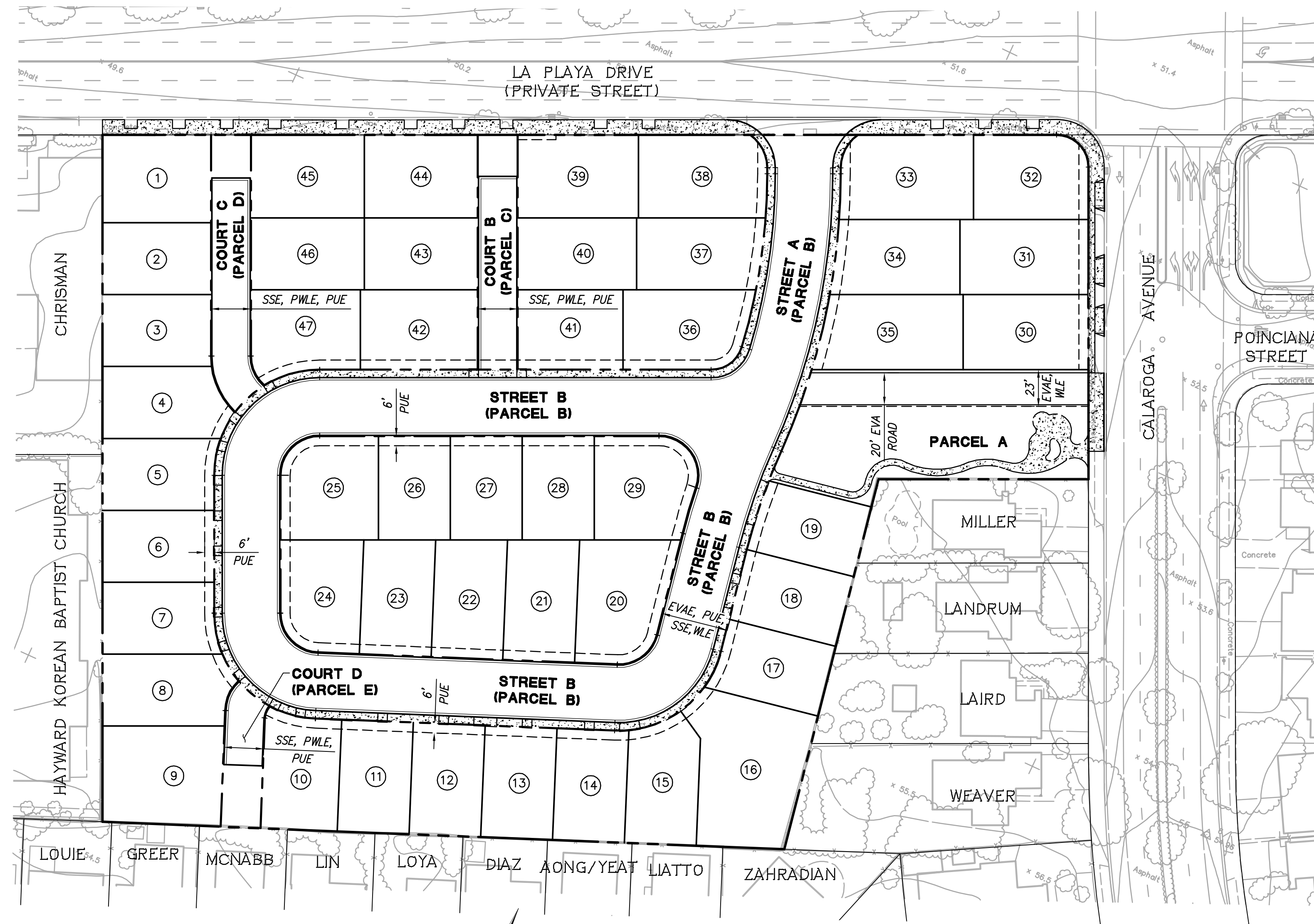
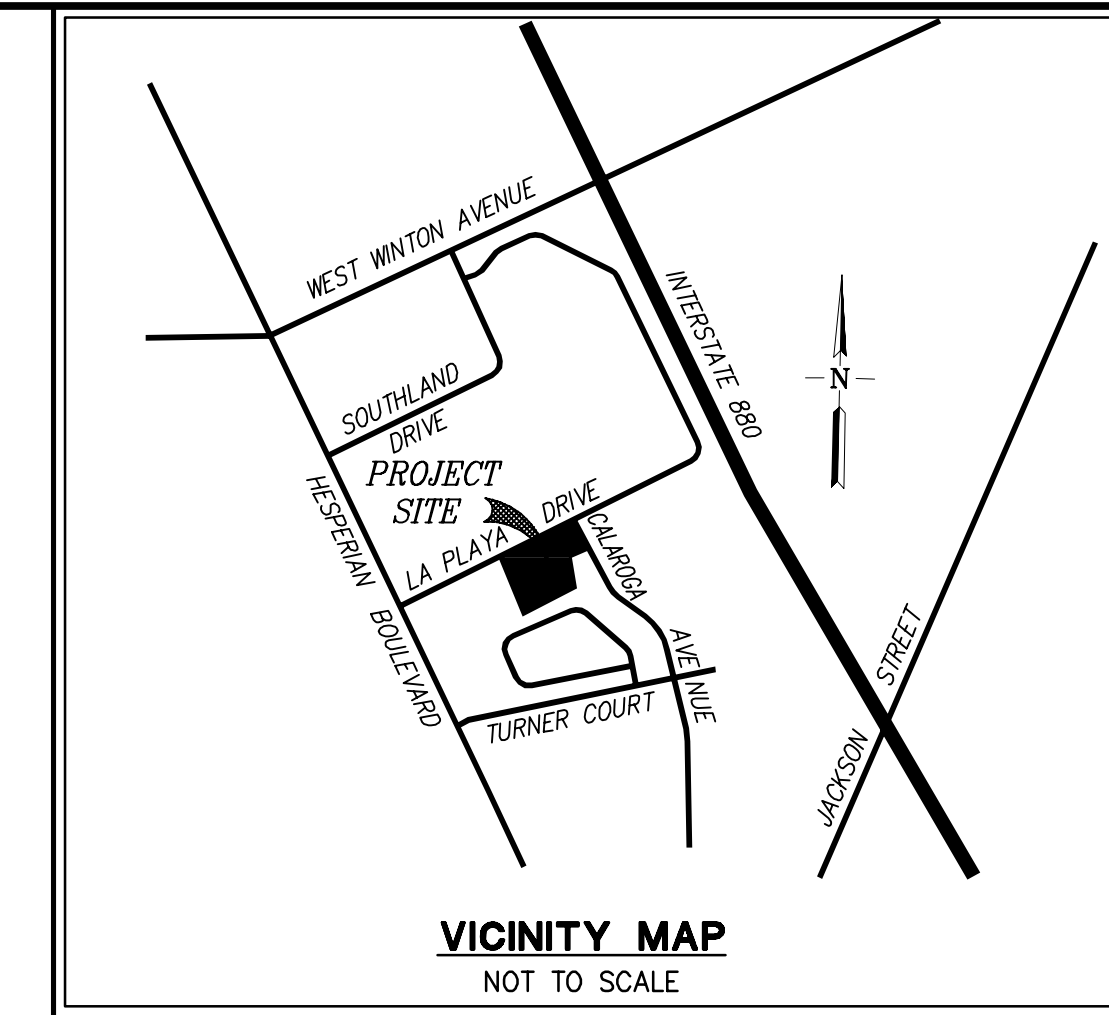
BENCHMARK

BRASS DISC IN STREET MONUMENT WELL LOCATED AT THE INTERSECTION OF CALAROGA AVE AND POINCIANA STREET. ELEVATION = 51.24 FEET - NGVD 88 VALUE (CITY OF HAYWARD NGVD 29 VALUE = 48.714 - NGVD 29) DETERMINED BY GPS RTK METHODS IN DECEMBER 2019. SMARTNET NORTH AMERICA NETWORK STATIONS CAPO - RTM3125 & CCSI - RTM 3224 CONTROLLED THE GPS RTK SOLUTIONS USING GEOID12. ELEVATION VALUES WERE CAPO = 39.916 & CCSI = 54.517.

VESTING TENTATIVE MAP

TRACT 8581 - LA PLAYA COMMONS

CITY OF HAYWARD, ALAMEDA COUNTY, CALIFORNIA



GENERAL NOTES

- OWNER:** QUACH'S HAYWARD LLC
C/O D.R. HORTON BAY, INC.
1000 LA PLAYA DRIVE
HAYWARD, CA 94545
TEL: (510) 506-3750
CONTACT: CHRIS ZABALLOS
- APPLICANT:** D.R. HORTON BAY, INC.
6683 OWENS DRIVE
PLEASANTON, CA 94588
TEL: (510) 506-3750
CONTACT: CHRIS ZABALLOS
- CIVIL ENGINEER:** RUGGERI-JENSEN-AZAR
4690 CHABOT DRIVE, SUITE 200
PLEASANTON, CA 94588
TEL: (925) 227-9100
CONTACT: ALEXANDER AZAR, R.C.E. 87006
- GEOTECHNICAL ENGINEER:** QUANTUM GEOTECHNICAL, INC.
6288 SAN IGNACIO AVENUE, SUITE A
SAN JOSE, CA 95119
TEL: (408) 629-3822
CONTACT: SIMON MAKDESSI
- ARCHITECT:** OAG ARCHITECTS
940 TYLER STREET, #19
BENICIA, CA 94510
TEL: (707) 361-5209
CONTACT: NANCY NELSON
- LANDSCAPE ARCHITECT:** R3 STUDIOS
201 4TH STREET, SUITE 101B
OAKLAND, CA 94607
TEL: (510) 452-4190
CONTACT: ROMAN DE SOTA
- PROPERTY DESCRIPTION:** PARCEL C, PARCEL MAP 307, FILED JANUARY 11, 1968, IN BOOK 54 OF PARCEL MAPS, PAGE 90, ALAMEDA COUNTY RECORDS.
- ASSESSOR'S PARCEL NUMBER:** 442-0038-001
- CURRENT USE:** COMMERCIAL
- PROPOSED USE:** RESIDENTIAL
- EXISTING ZONING:** NEIGHBORHOOD COMMERCIAL
- PROPOSED ZONING:** PLAN DEVELOPMENT (PD) REZONE
- GROSS SITE AREA:** 5.4± ACRES
- TOTAL NUMBER OF PROPOSED LOTS:**
 - a. RESIDENTIAL: 47 LOTS
 - b. OPEN SPACE (PARCEL A): 1 LOT
 - c. PRIVATE STREETS (PARCEL B): 1 LOT
 - d. PRIVATE COURTS (PARCEL C-E): 3 LOTS
 - 52 LOTS**
- UTILITIES:**
 - a. WATER: CITY OF HAYWARD
 - b. SANITARY SEWER: CITY OF HAYWARD
 - c. STORM DRAIN: CITY OF HAYWARD
 - d. FIRE: CITY OF HAYWARD
 - e. GAS AND ELECTRIC: PACIFIC GAS AND ELECTRIC
 - f. TELEPHONIC: AT&T
 - g. CABLE TV: COMCAST
- THIS PROPERTY LIES WITHIN FLOOD ZONE X (AREAS DETERMINED TO BE OUTSIDE THE 0.2% ANNUAL CHANCE FLOODPLAIN), AS SHOWN IN FLOOD INSURANCE RATE MAP NUMBER 06001C0288G, PANEL NO. 288 OF 725, DATED AUGUST 3, 2009.**
- ALL EROSION CONTROL MEASURES SHALL BE IN CONFORMANCE WITH THE CRITERIA AND STANDARDS OF THE CITY OF HAYWARD.**
- THE HOMEOWNERS' ASSOCIATION WILL OWN AND MAINTAIN ALL COMMON LOTS, PRIVATE STREETS, PRIVATE COURTS, COMMON WALKWAYS, PRIVATE STREET LIGHTS, PRIVATE STORM DRAIN SYSTEMS, WATER QUALITY TREATMENT FACILITIES AND COMMON AMENITIES.**

LEGEND

PROPOSED	DESCRIPTION	EXISTING
- - - - -	TRACT BOUNDARY	- - - - -
- - - - -	LOT LINE	- - - - -
- - - - -	RIGHT OF WAY	- - - - -
- - - - -	CENTER LINE	- - - - -
- - - - -	RETAINING WALL	- - - - -
- - - - -	EASEMENT LINE	- - - - -
- - - - -	STORM DRAIN	- - - - -
- - - - -	SANITARY SEWER	- - - - -
- - - - -	WATER	- - - - -
- - - - -	CURB & GUTTER	- - - - -
- - - - -	SIDEWALK	- - - - -
■	STORM WATER INLET	□
●	DROP INLET	□
○	MANHOLE	○
○	SEWER CLEANOUT	○
●	FIRE HYDRANT	○
■	WATER METER	○
- - - - -	CONTOUR ELEVATIONS	- - - - -
x.525.2	SPOT ELEVATION	x.525.2
0.7%	SLOPE	- - - - -
⊙	STREET LIGHT	⊙

ABBREVIATIONS

AB	AGGREGATE BASE	LP	LOW POINT
AC	ASPHALT CONCRETE	MH	MANHOLE
BR	BIO-RETENTION	OH	OVERHEAD
BW	BACK OF SIDEWALK	PAD	PAD ELEVATION
CONC	CONCRETE	PAV	PAYMENT ELEVATION
EG	EXISTING GROUND	PL	PROPERTY LINE
ELEC	ELECTRIC	PSDE	PRIVATE STORM DRAIN EASEMENT
EVAE	EMERGENCY VEHICLE ACCESS EASEMENT	PUE	PUBLIC UTILITY EASEMENT
EX	EXISTING	RET	CURB RETURN
FC	FACE OF CURB	RW	RIGHT OF WAY
FF	FINISH FLOOR	SDE	STORM DRAIN EASEMENT
FG	FINISHED GRADE	SSE	SANITARY SEWER EASEMENT
FL	FLOW LINE	SM	STORM WATER INLET
GB	GRADE BREAK	SWK	SIDEWALK
GE	GARAGE ELEVATION	TEL	TELEPHONE
HP	HIGH POINT	TC	TOP OF CURB
INV	INVERT ELEVATION	WLE	WATER LINE EASEMENT
JT	JOINT TRENCH	WM	WATER METER
LL	LOT LINE	WS	WATER SERVICE

CIVIL ENGINEER

I, ALEXANDER AZAR, CERTIFY THAT THIS TENTATIVE WAS PREPARED BY ME OR UNDER MY DIRECT SUPERVISION AND THAT IT COMPLIES WITH THE CITY OF HAYWARD SUBDIVISION AND THAT IT COMPLIES WITH THE CITY OF HAYWARD SUBDIVISION ORDINANCE AND THE STATE MAP ACT.

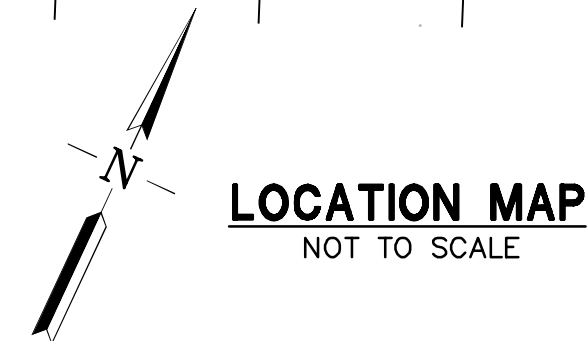
A SOILS REPORT ON THIS PROPERTY HAS BEEN PREPARED BY QUANTUM GEOTECHNICAL, INC. ENTITLED "GEOTECHNICAL INVESTIGATION ON PROPOSED RESIDENTIAL DEVELOPMENT" DATED JANUARY 15, 2020, WHICH HAS BEEN FILED WITH THE CITY OF HAYWARD.

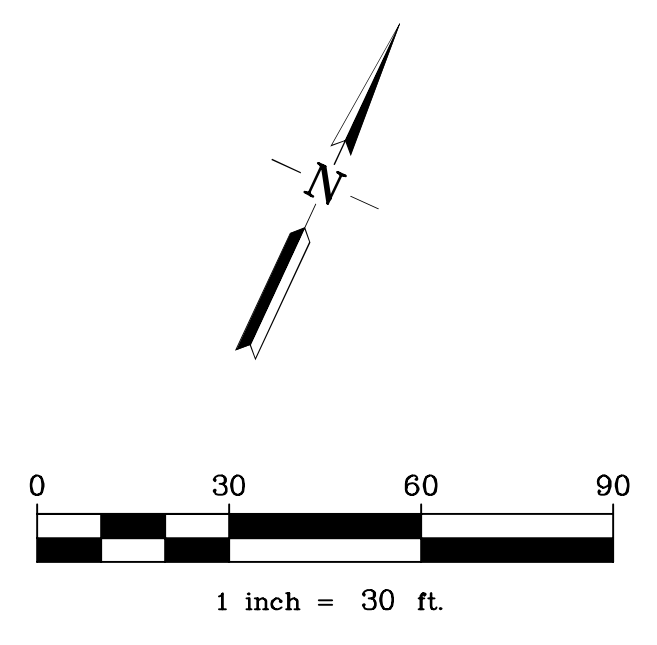
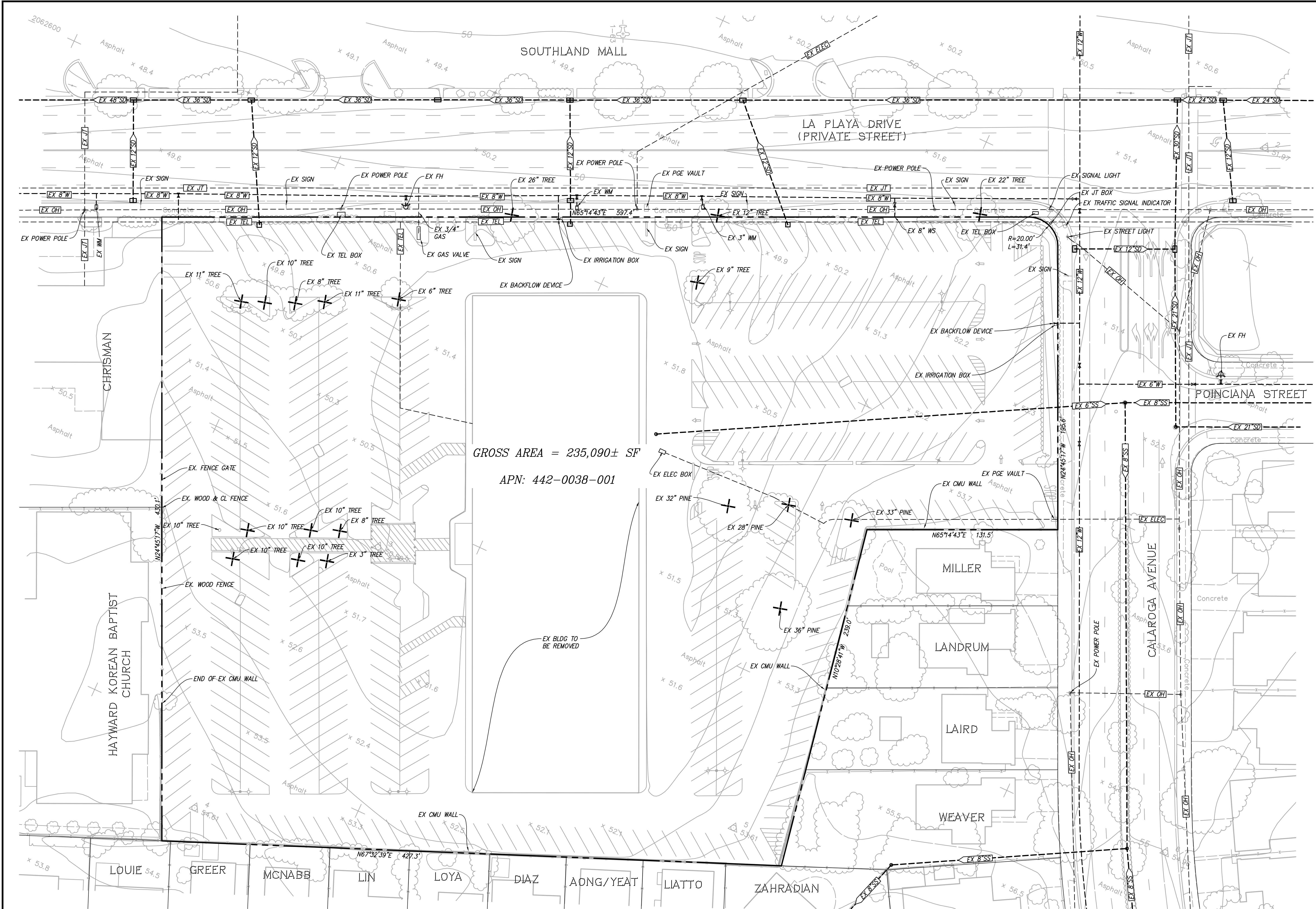
ALEXANDER AZAR, R.C.E. 87006
RUGGERI-JENSEN-AZAR, INC.

DATE

SHEET INDEX

SHEET NO.	DESCRIPTION
C-1.0	VESTING TENTATIVE MAP
C-2.0	EXISTING CONDITION PLAN
C-3.0	PROPOSED LOTTING PLAN
C-4.0	PRELIMINARY GRADING AND DRAINAGE PLAN
C-5.0	PRELIMINARY UTILITY PLAN
C-6.0	PRELIMINARY STORMWATER CONTROL PLAN





LEGEND

- ✦ EX TREE TO BE REMOVED
- EX TREE TO REMAIN

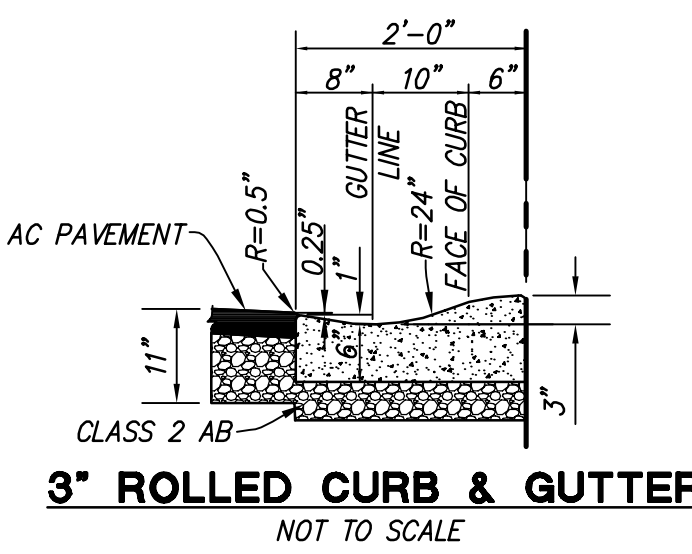
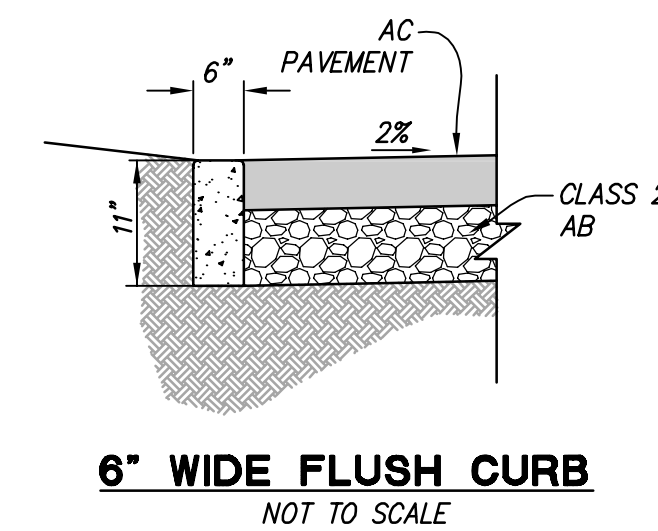
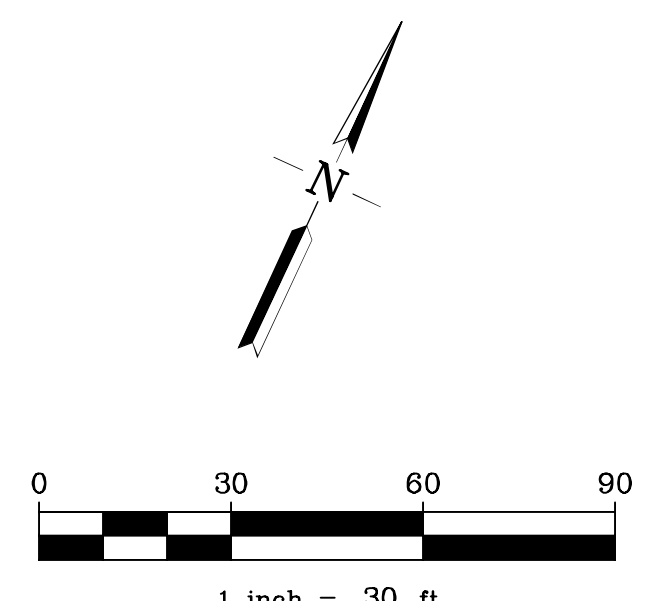
EXISTING CONDITION PLAN
TRACT 8581 - LA PLAYA COMMONS
 CITY OF HAYWARD, ALAMEDA COUNTY, CALIFORNIA
 FOR: D.R. HORTON

RJA
RUGGERI-JENSEN-AZAR
 ENGINEERS • PLANNERS • SURVEYORS
 4690 CHABOT DRIVE, SUITE 200 PLEASANTON, CA 94588
 PHONE: (925) 227-9100 FAX: (925) 227-9300

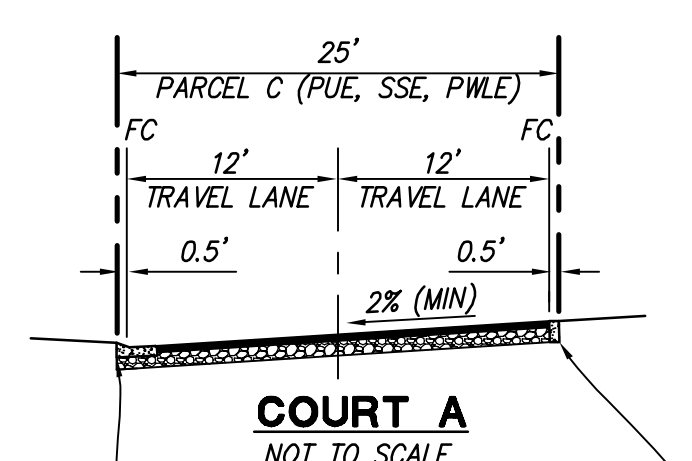
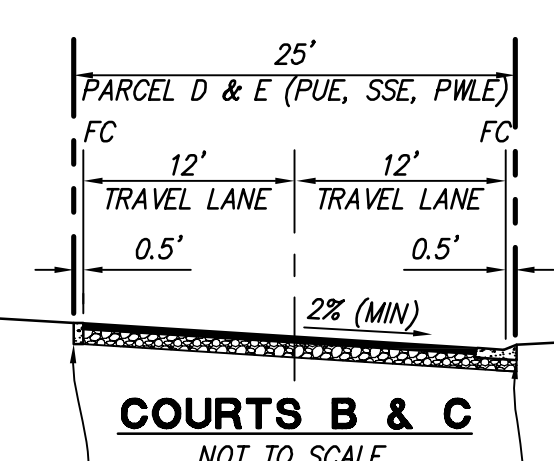
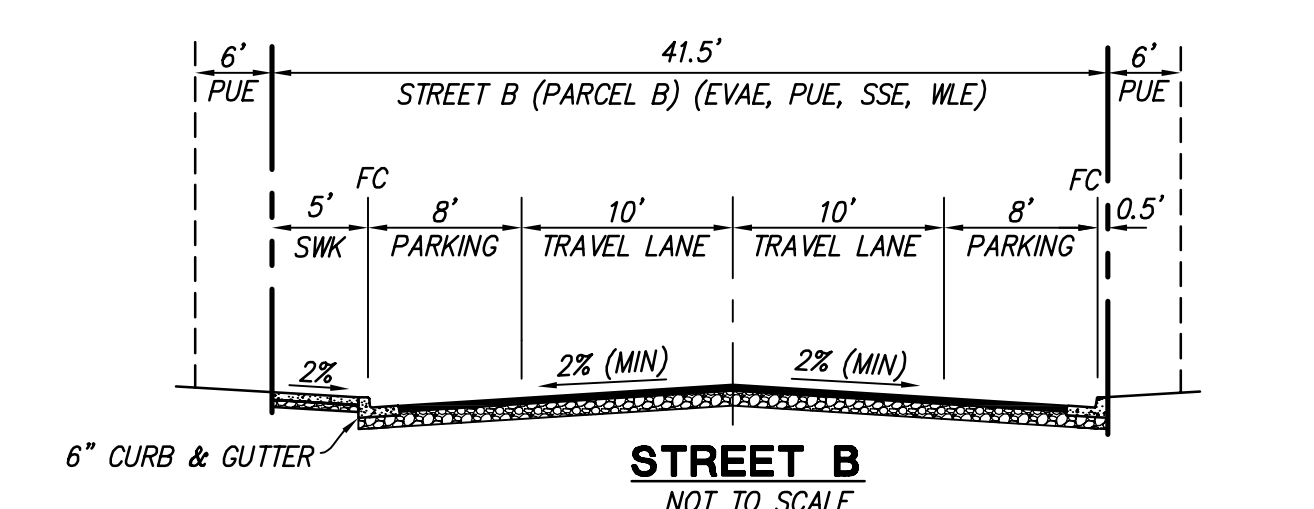
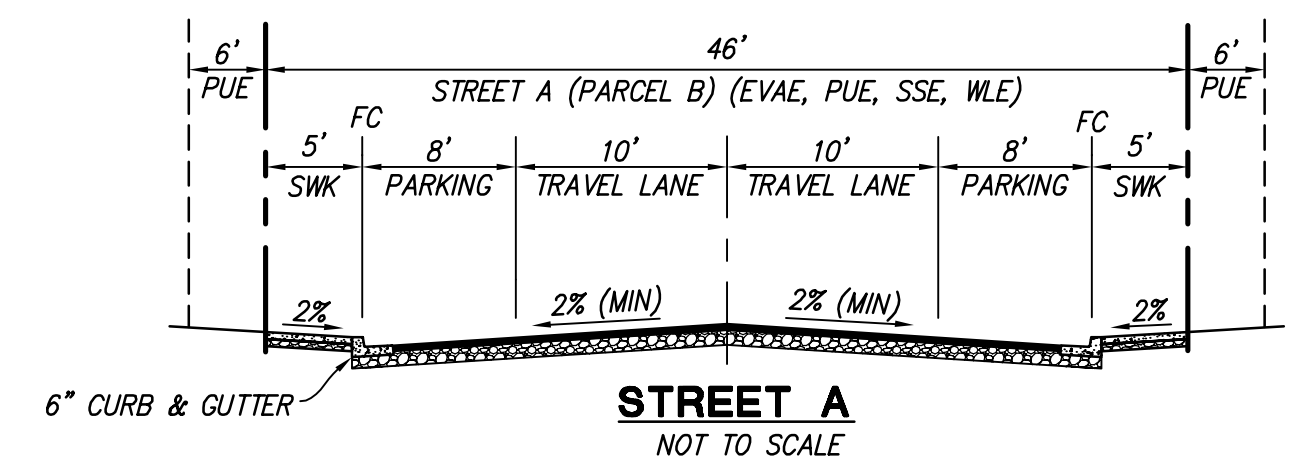
C:\J082019\191098\CAD FILES\10-PLAN\DWG\10-PLAN\10-PLAN\10-PLAN.DWG 6/7/2021 10:29:44 AM ERIC HD

LOT AREAS TABLE	
LOT NO.	AREA (SQ.FT.)
1	3,740
2	3,060
3	3,061
4	3,386
5	3,181
6	3,150
7	3,193
8	3,554
9	4,638
10	3,433
11	3,150
12	3,150
13	3,150
14	3,152
15	3,404
16	6,161
17	3,142
18	3,105
19	3,065
20	4,210
21	3,422
22	3,341
23	3,259
24	3,459
25	3,862
26	2,925
27	2,925
28	2,925
29	3,889
30	3,689
31	3,783
32	3,730
33	4,351
34	3,671
35	4,168
36	3,814
37	3,518
38	4,098
39	3,952
40	3,352
41	3,300
42	3,675
43	3,195
44	3,562
45	3,822
46	3,195
47	3,569
TOTAL	166,536

PARCEL AREAS TABLE	
PARCEL NO.	AREA (SQ.FT.)
PARCEL A	13,381
PARCEL B	45,177
PARCEL C	3,675
PARCEL D	4,193
PARCEL E	2,127
TOTAL	68,553



REMOVE EX CURB & GUTTER AND REPLACE W/ ROLLED CURB & GUTTER PER CITY STANDARD DETAIL SD-108 REMOVE & REPLACE EX SWK



PROPOSED LOTTING PLAN

TRACT 8581 - LA PLAYA COMMONS

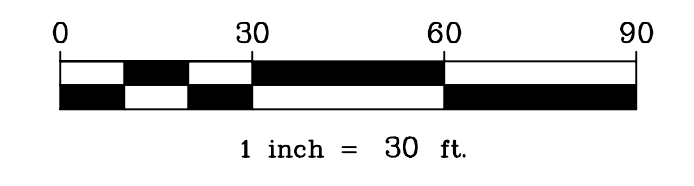
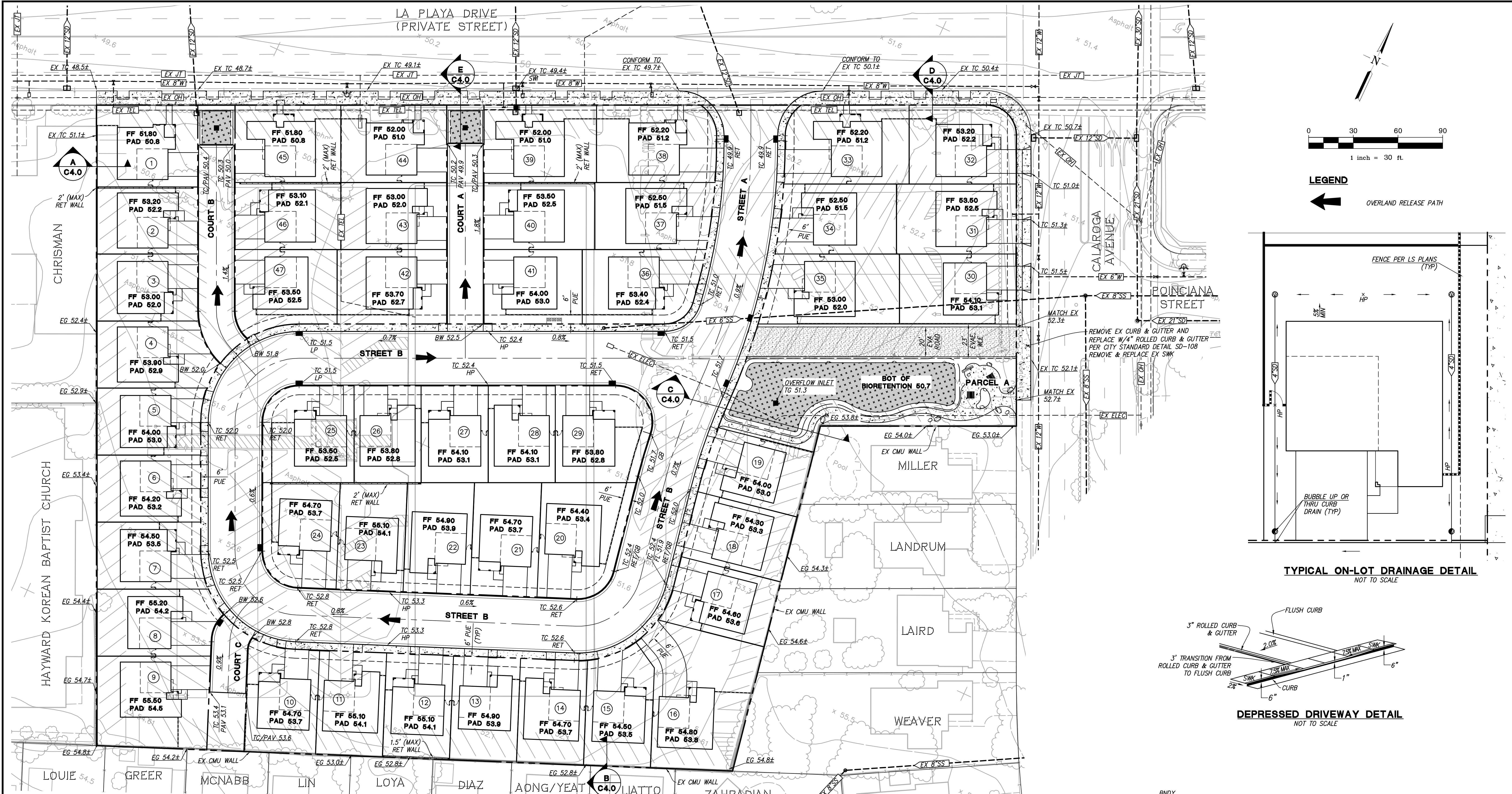
CITY OF HAYWARD, ALAMEDA COUNTY, CALIFORNIA
FOR: D.R. HORTON

LEGEND

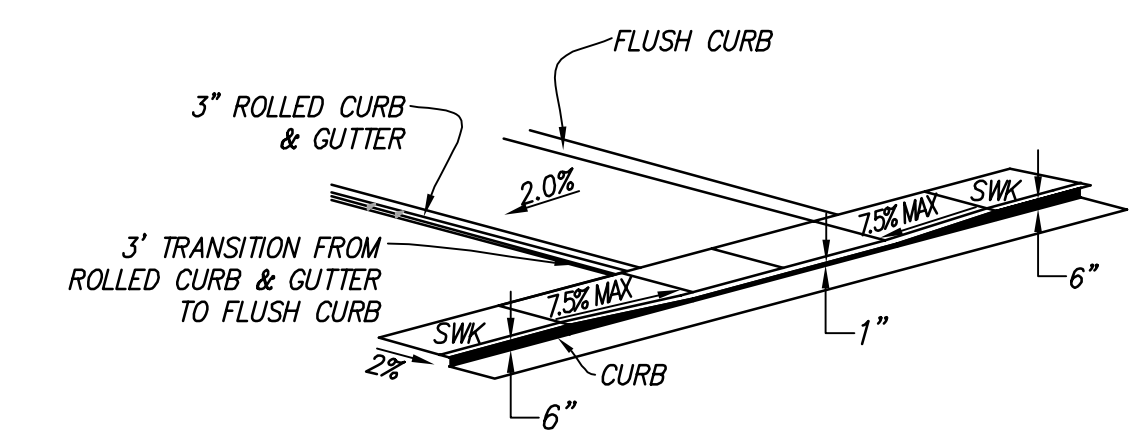
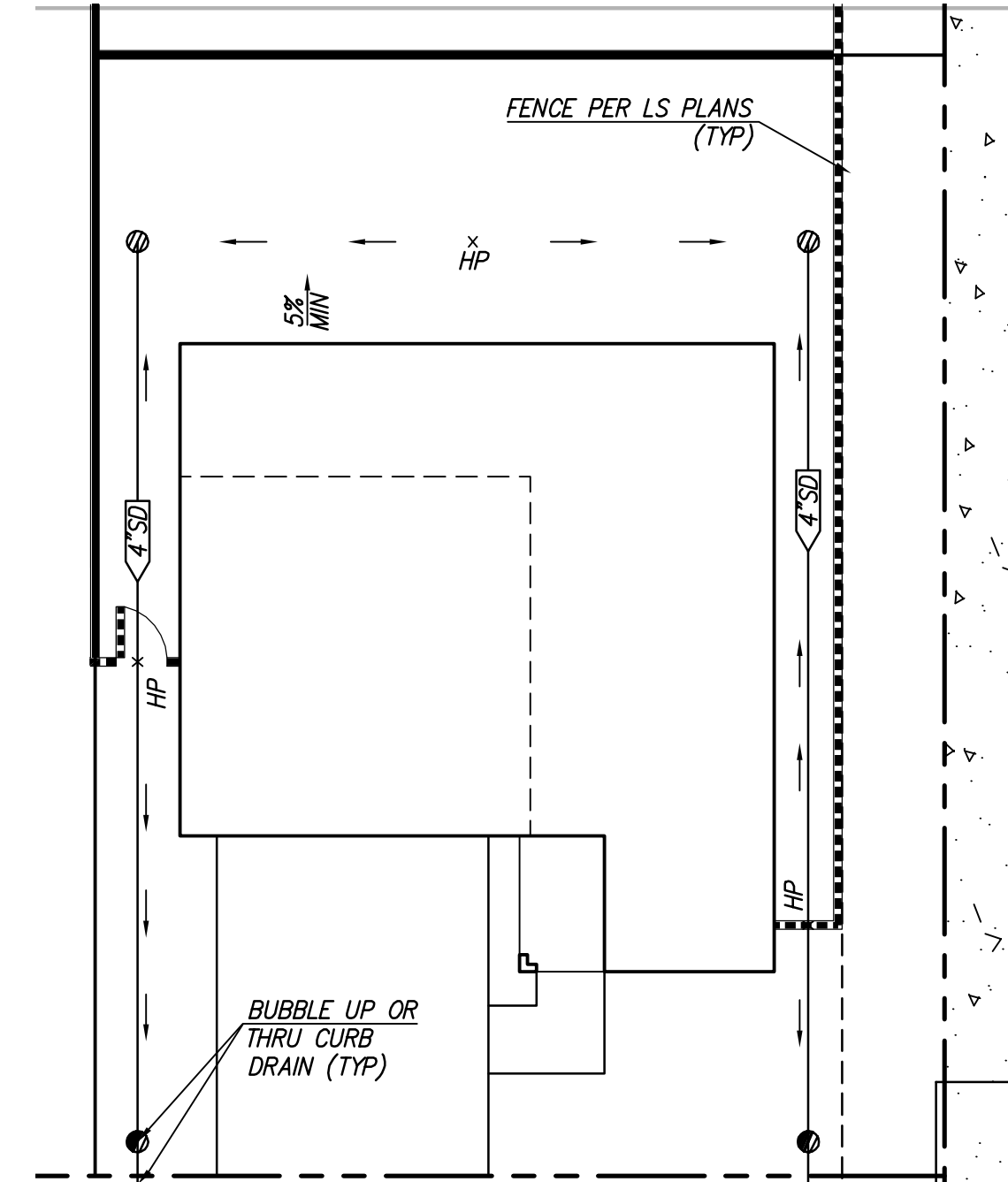
- ① EVAE, PUE, SSE, WLE
- ② PUE, SSE, PWLE
- EVAE EMERGENCY VEHICLE ACCESS EASEMENT
- PUE PUBLIC UTILITY EASEMENT
- SSE SANITARY SEWER EASEMENT
- WLE WATER LINE EASEMENT
- PSDE PRIVATE STORM DRAIN EASEMENT
- PWLE PRIVATE WATER LINE EASEMENT

RJA
RUGGERI-JENSEN-AZAR
ENGINEERS • PLANNERS • SURVEYORS
4690 CHABOT DRIVE, SUITE 200 PLEASANTON, CA 94588
PHONE: (925) 227-9100 FAX: (925) 227-9300

© 2021 RJA ENGINEERS, INC. ALL RIGHTS RESERVED. THIS PLAN IS THE PROPERTY OF RJA ENGINEERS, INC. AND IS NOT TO BE REPRODUCED OR TRANSMITTED IN ANY FORM OR BY ANY MEANS, ELECTRONIC OR MECHANICAL, WITHOUT THE WRITTEN PERMISSION OF RJA ENGINEERS, INC.

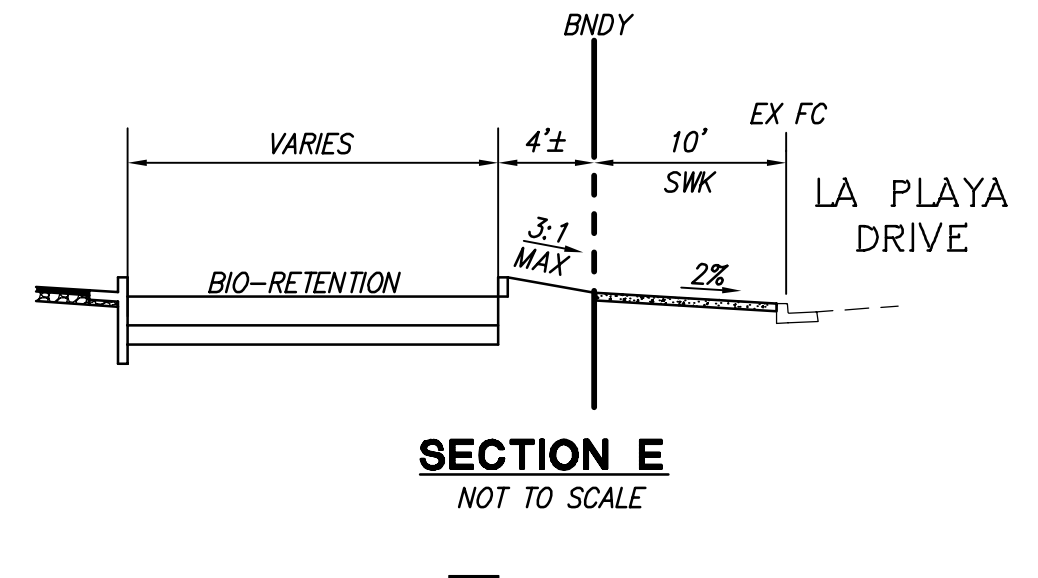
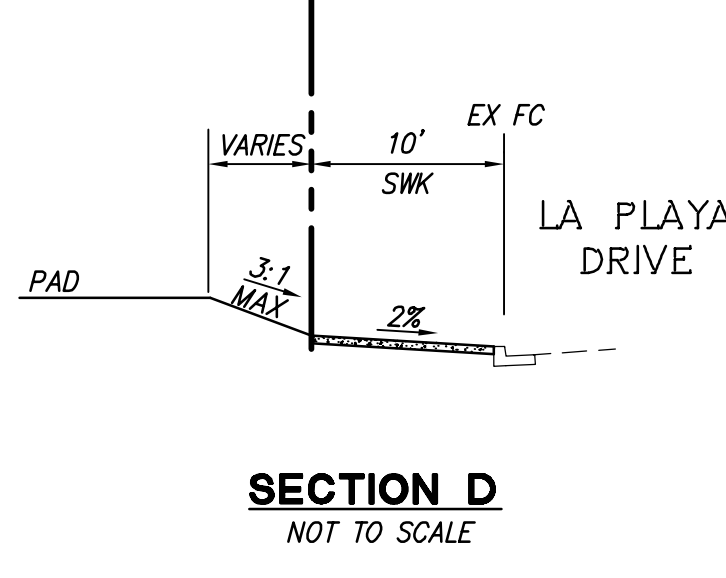
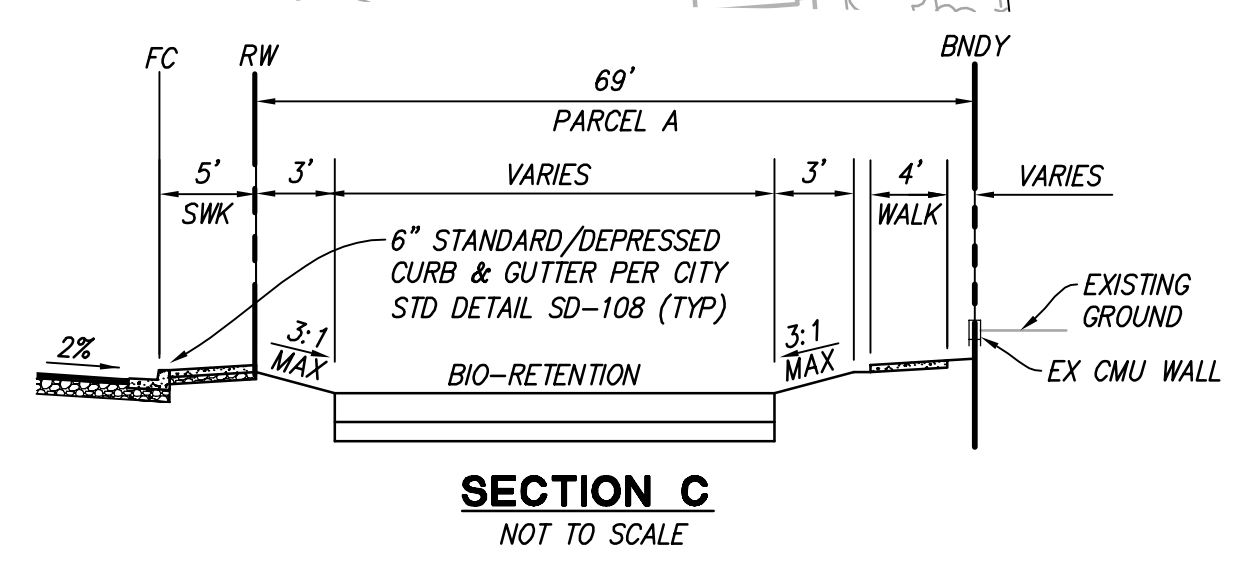
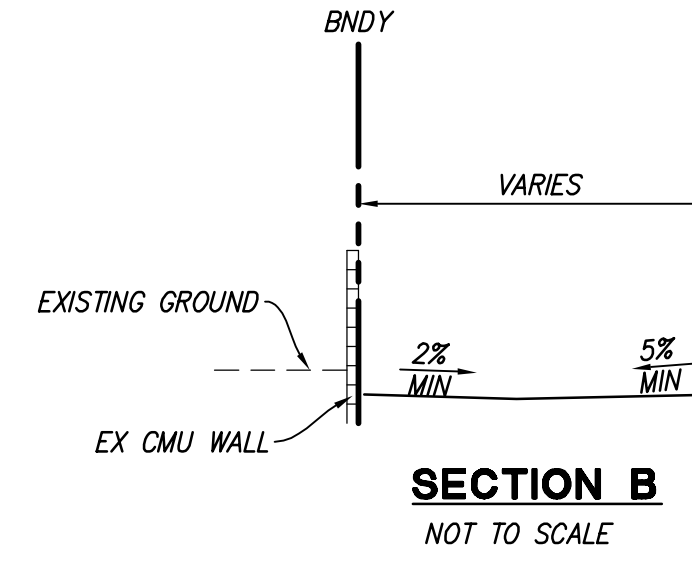
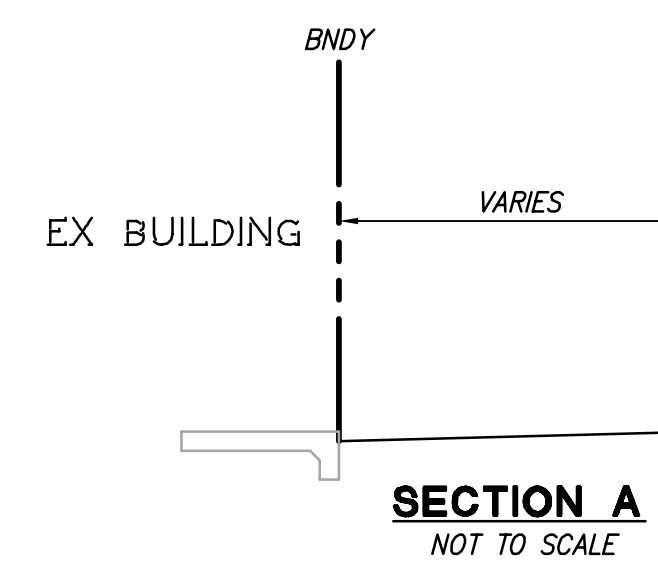


LEGEND
 OVERLAND RELEASE PATH



ESTIMATED EARTHWORK QUANTITIES

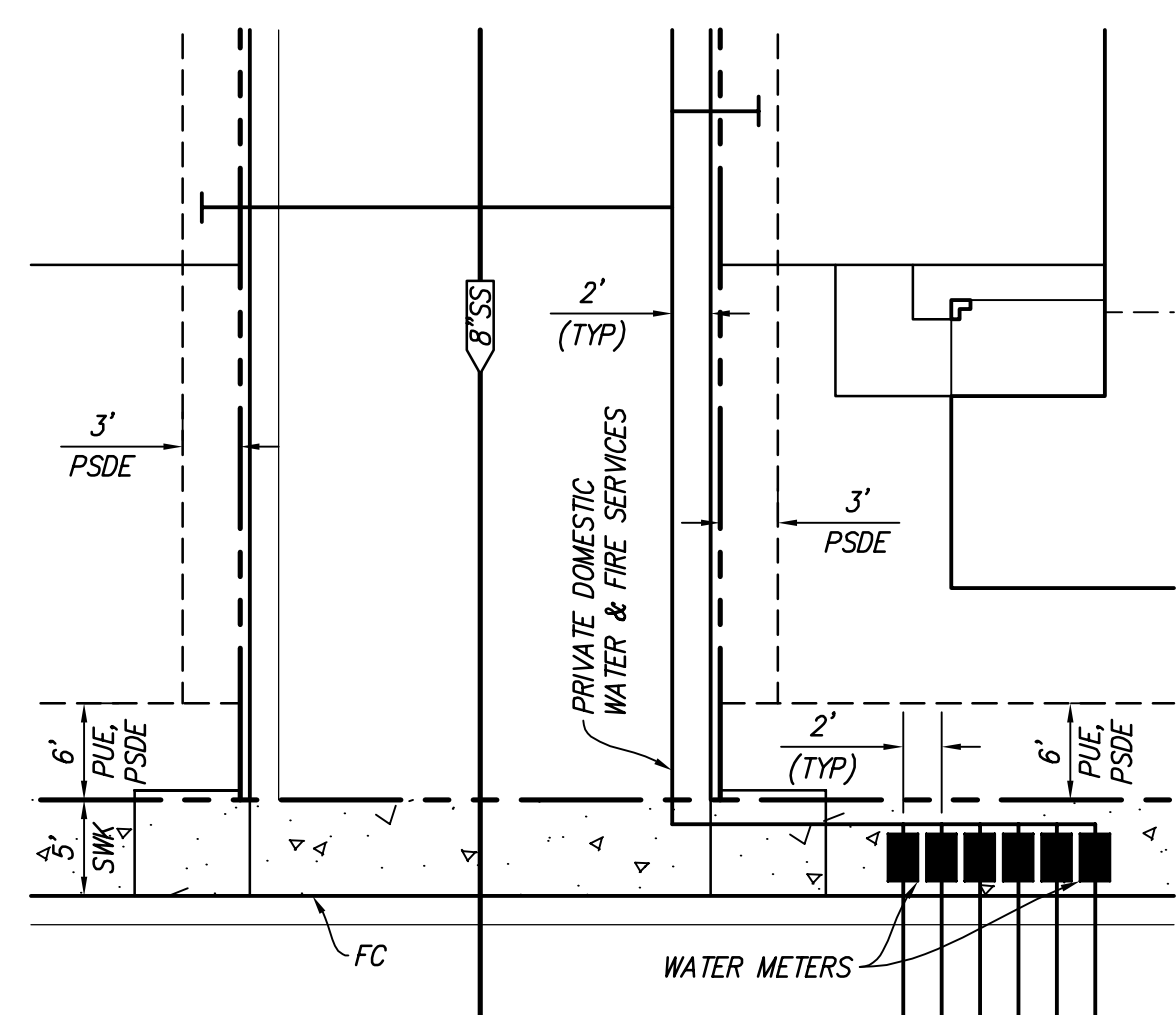
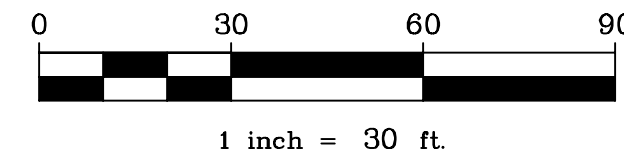
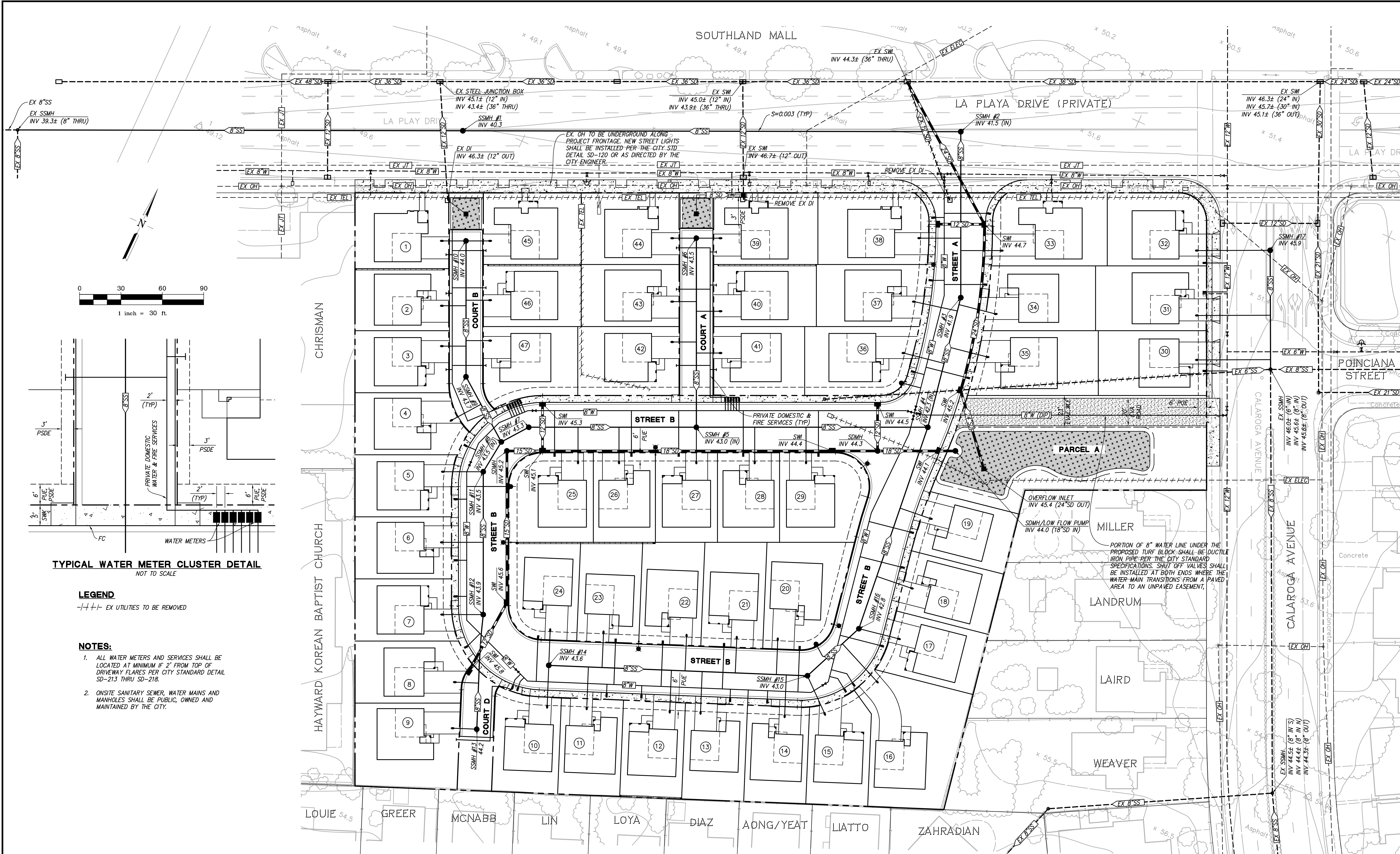
ITEMS	CUT (C.Y.) (2,700)	FILL (C.Y.) 6,000
DEMOLITION (SEE NOTE 3)	0	0
LOTS	100	6,000
SIDEWALKS	200	0
STREET	900	0
COURTS	300	0
FOUNDATION & PLUMBING SPOILS	2,350	0
TRENCH SPOIL	1,400	0
C-3 SPOILS	500	0
PARCEL A AND EVA	800	0
SHRINKAGE (ASSUME 5%)	0	300
TOTAL	6,450	6,300



PRELIMINARY GRADING & DRAINAGE PLAN
TRACT 8581 - LA PLAYA COMMONS
 CITY OF HAYWARD, ALAMEDA COUNTY, CALIFORNIA
 FOR: D.R. HORTON

- ALL QUANTITIES SHOWN ON THIS PLAN ARE APPROXIMATE, CALCULATED CUT AND FILL ARE TO "ROUGH GRADE" AND EXISTING GROUND. THE ACTUAL AMOUNT OF EARTH MOVED IS VARIABLE DEPENDENT ON COMPACTION, CONSOLIDATION, STRIPPING REQUIREMENTS, AND THE CONTRACTOR'S METHOD OF OPERATION.
- THE CONTRACTOR SHALL VERIFY ALL EARTHWORK QUANTITIES BEFORE START OF WORK. THE CONTRACTOR SHALL CONTACT THE CIVIL ENGINEER WITH ANY DISCREPANCIES.
- DEMOLITION MATERIAL TO BE OFFHAULED BY THE CONTRACTOR.
- FOUNDATION AND PLUMBING SPOILS ARE ASSUMED AT 50 CY/BUILDING.
- 5% SHRINKAGE ASSUMPTION PER GEOTECHNICAL ENGINEER.

RJA
RUGGERI-JENSEN-AZAR
 ENGINEERS • PLANNERS • SURVEYORS
 4690 CHABOT DRIVE, SUITE 200 PLEASANTON, CA 94588
 PHONE: (925) 227-9100 FAX: (925) 227-9300



TYPICAL WATER METER CLUSTER DETAIL
NOT TO SCALE

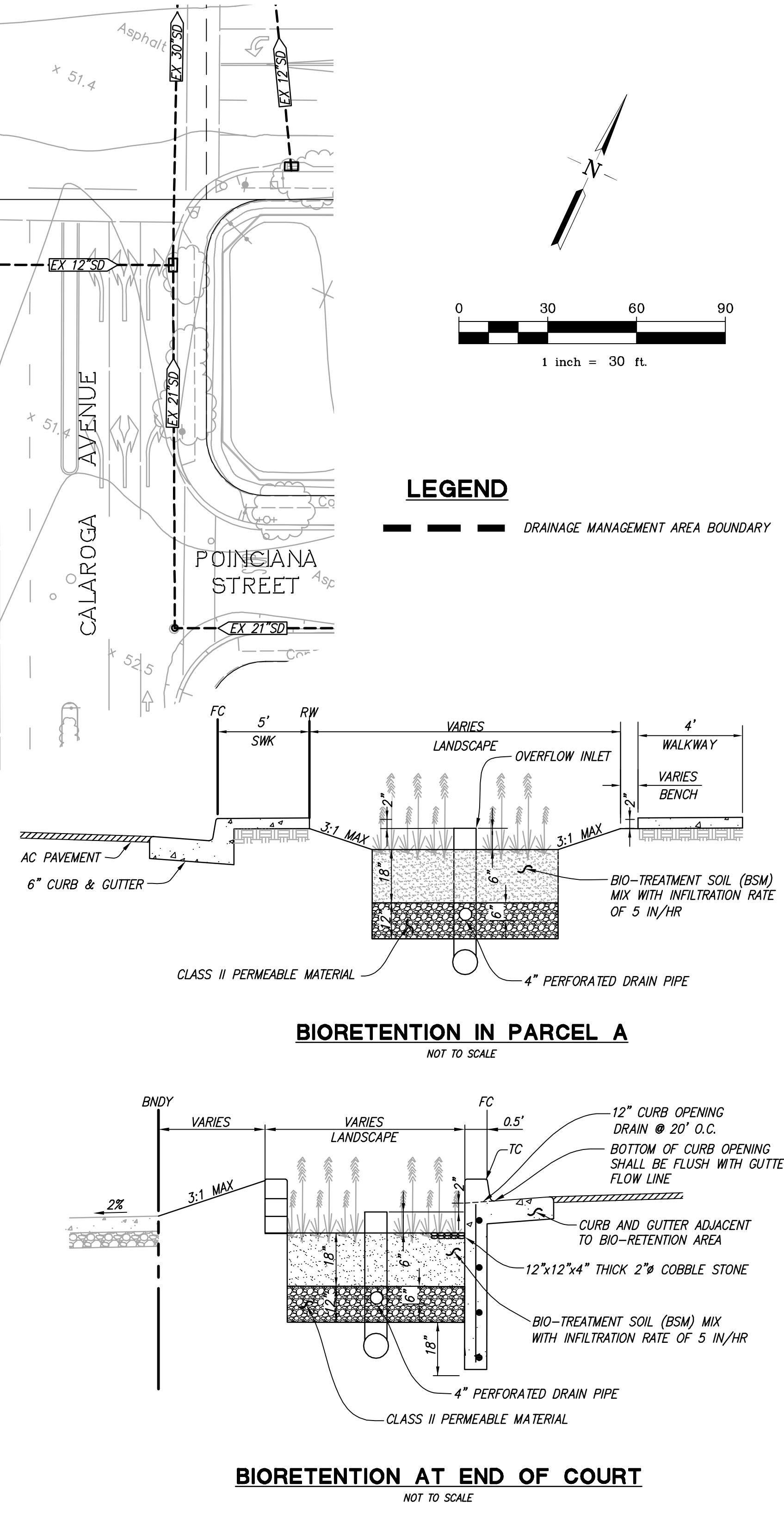
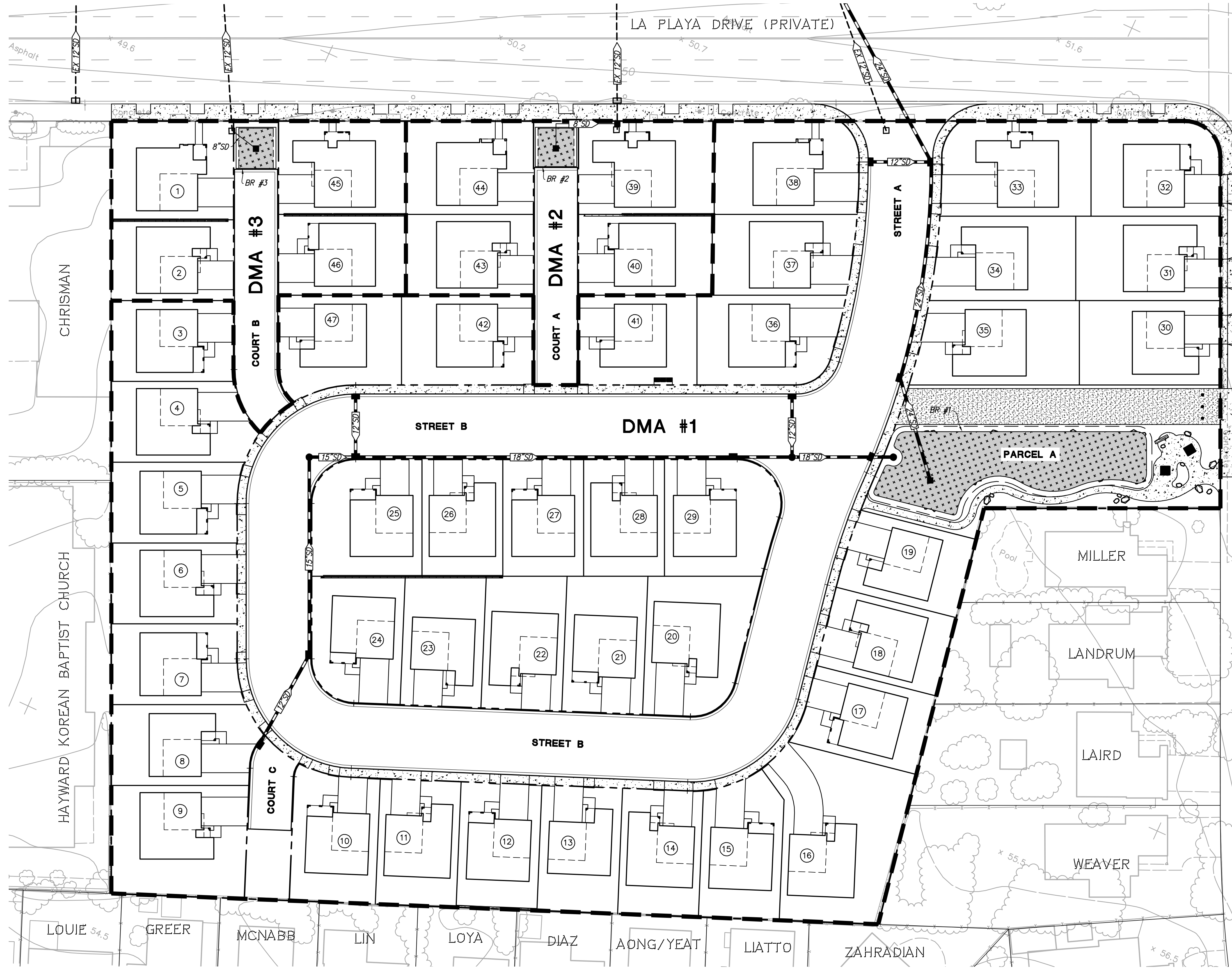
LEGEND
- - - - EX UTILITIES TO BE REMOVED

- NOTES:**
1. ALL WATER METERS AND SERVICES SHALL BE LOCATED AT MINIMUM IF 2' FROM TOP OF DRIVEWAY FLARES PER CITY STANDARD DETAIL SD-213 THRU SD-218.
 2. ONSITE SANITARY SEWER, WATER MAINS AND MANHOLES SHALL BE PUBLIC, OWNED AND MAINTAINED BY THE CITY.

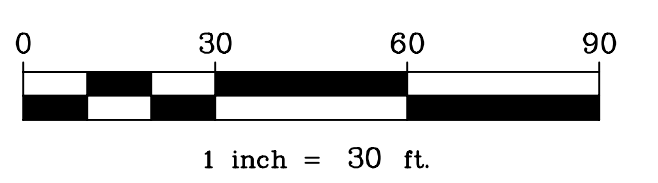
PRELIMINARY UTILITY PLAN
TRACT 8581 - LA PLAYA COMMONS
CITY OF HAYWARD, ALAMEDA COUNTY, CALIFORNIA
FOR: D.R. HORTON


RUGGERI-JENSEN-AZAR
 ENGINEERS • PLANNERS • SURVEYORS
 4690 CHABOT DRIVE, SUITE 200 PLEASANTON, CA 94588
 PHONE: (925) 227-9100 FAX: (925) 227-9300

G:\082019\191098\CAD FILES\102-PLANNING\TEXT-MAP\191098.DWG 6/1/2021 10:28:19 AM ERIC HD



LEGEND
 --- DRAINAGE MANAGEMENT AREA BOUNDARY



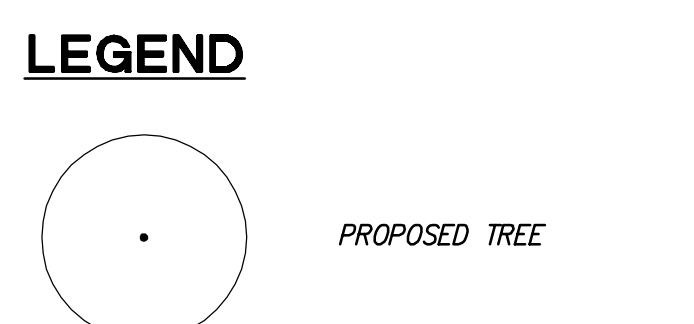
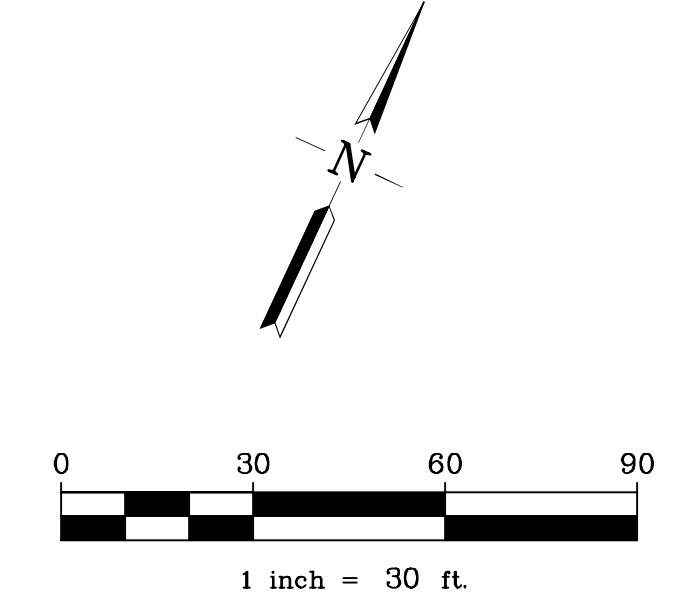
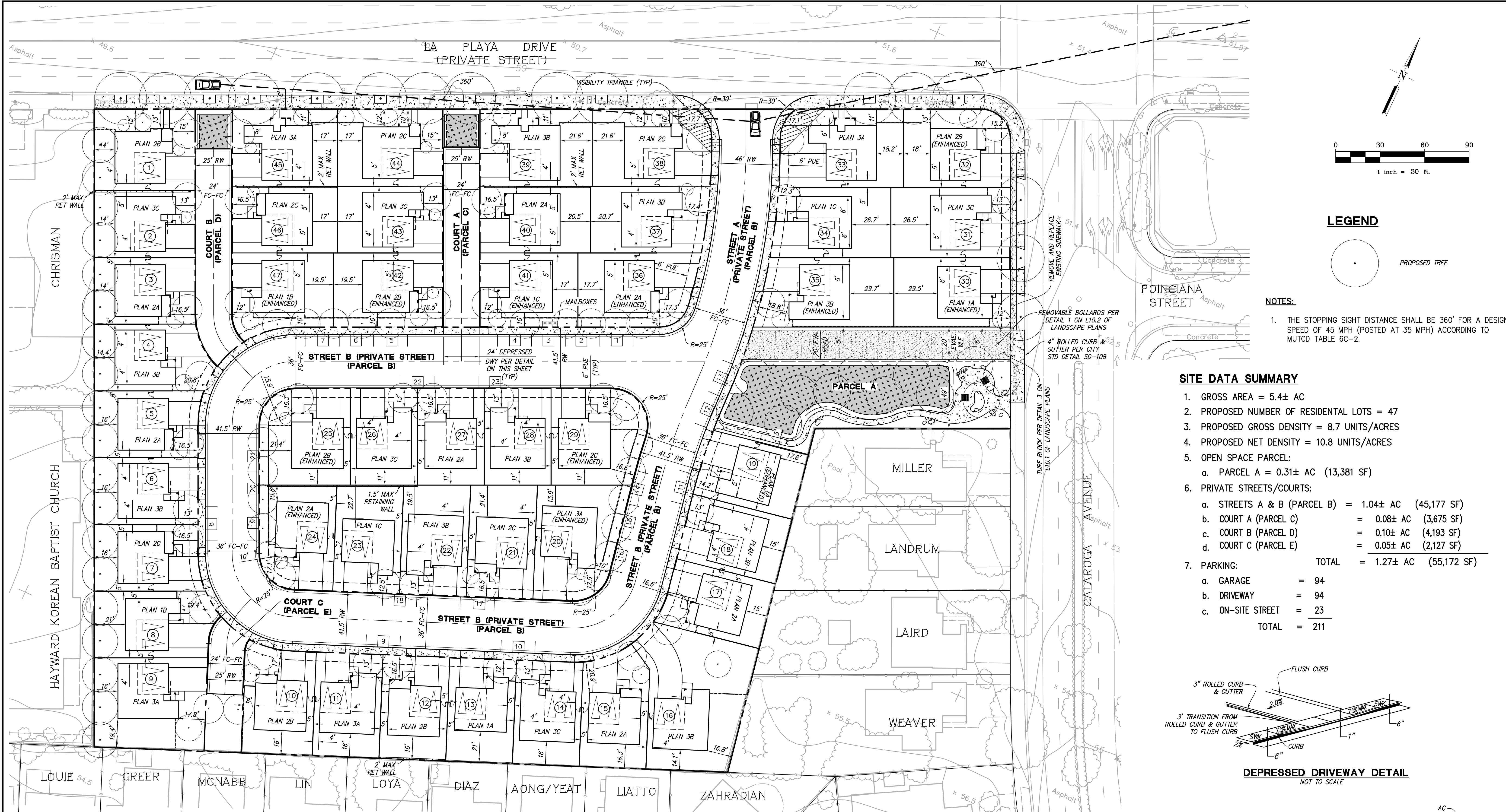
DRAINAGE MANAGEMENT AREA (DMA)	TREATMENT CONTROL MEASURES (TCM)	TOTAL DRAINAGE AREA (SF)	PERVIOUS AREA (SF)	IMPERVIOUS AREA (SF)	EFFECTIVE PERVIOUS AREA (SF)	EFFECTIVE IMPERVIOUS AREA (SF)	TREATMENT AREA REQUIRED (SF)	TREATMENT AREA PROVIDED (SF)	DEPTH OF PONDING (INCHES)	TREATMENT TYPE	SIZING METHOD
1	BR #1	199,362	42,079	157,283	4,208	161,491	4,658	4,658	6	BIO-RETENTION	SEE NOTE 2
2	BR #2	17,847	3,481	14,366	348	14,714	425	428	6	BIO-RETENTION	SEE NOTE 2
3	BR #3	17,880	3,410	14,470	341	14,811	428	430	6	BIO-RETENTION	SEE NOTE 2

- NOTES:**
- THE CALCULATIONS TO THE LEFT ARE BASED ON THE ALAMEDA COUNTYWIDE CLEAN WATER PROGRAM, C.3 STORMWATER TECHNICAL GUIDANCE, DATED OCTOBER 31, 2017 AND THE FOLLOWING CRITERIA:
 a. EFFECTIVE IMPERVIOUS AREA = IMPERVIOUS AREA + 10% OF PERVIOUS AREA
 b. 0.2 INCHES/HOUR RAINFALL INTENSITY ON 100% OF EFFECTIVE IMPERVIOUS AREA.
 c. SOIL FOR TREATMENT MEDIUM WITH A 5 INCHES/HOUR INFILTRATION RATE.
 - THE BIO-RETENTION FOR EACH DMA WAS SIZED USING THE "WORKSHEET FOR CALCULATING THE COMBINATION FLOW AND VOLUME METHOD" PROVIDED BY THE ALAMEDA COUNTYWIDE CLEAN WATER PROGRAM, ASSUMING A MAXIMUM OF 6 INCHES OF PONDING.
 - HYDROMODIFICATION IS NOT REQUIRED SINCE THE POST-DEVELOPMENT IMPERVIOUS SURFACE AREA IS LESS THAN THE PRE-DEVELOPMENT CONDITION.
 - THE DEPTH TO GROUNDWATER FOR THE SITE IS APPROXIMATELY 20 FEET.
 - THE SITE CONSISTS PRIMARILY OF TYPE "D" SOIL.

PRELIMINARY STORMWATER CONTROL PLAN
TRACT 8581 - LA PLAYA COMMONS
 CITY OF HAYWARD, ALAMEDA COUNTY, CALIFORNIA
 FOR: D.R. HORTON


RUGGERI-JENSEN-AZAR
 ENGINEERS • PLANNERS • SURVEYORS
 4690 CHABOT DRIVE, SUITE 200 PLEASANTON, CA 94588
 PHONE: (925) 227-9100 FAX: (925) 227-9300

G:\082019\191098\CAD FILES\102-PLAN\102-PLAN\102-PLAN\102-PLAN.DWG 6/7/2021 10:28:54 AM ERIC HO



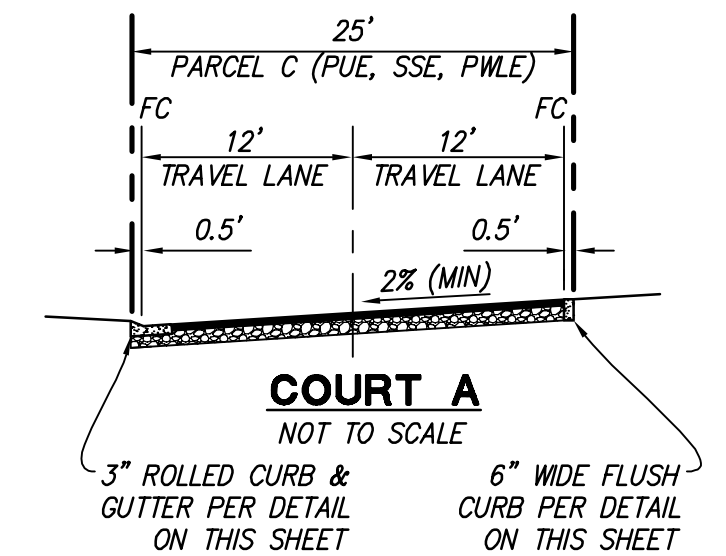
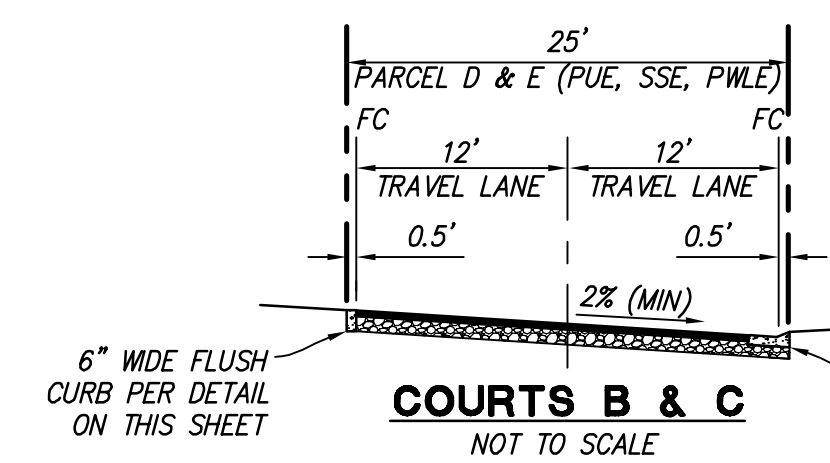
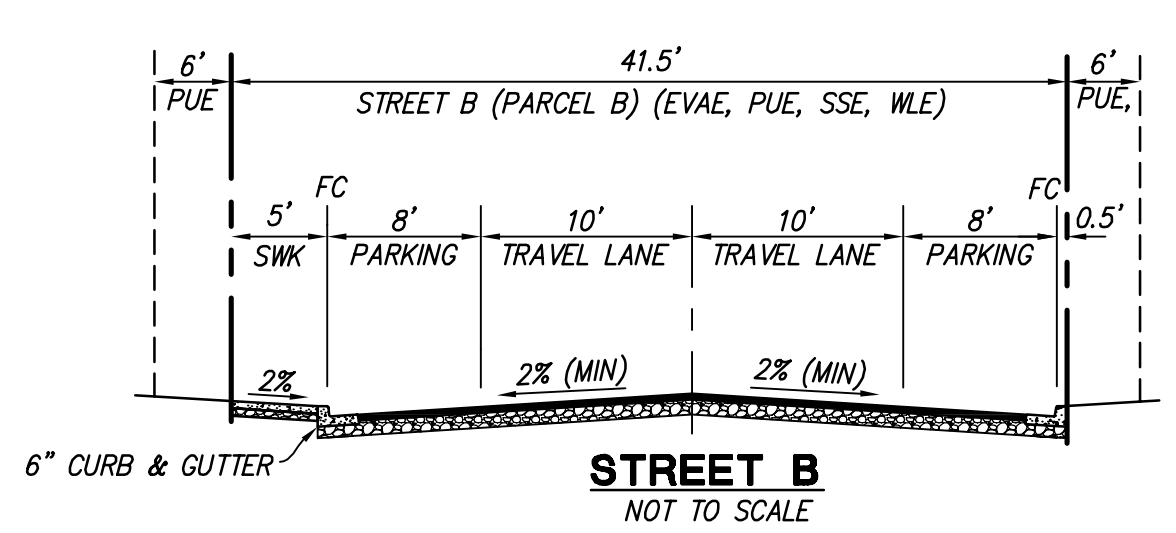
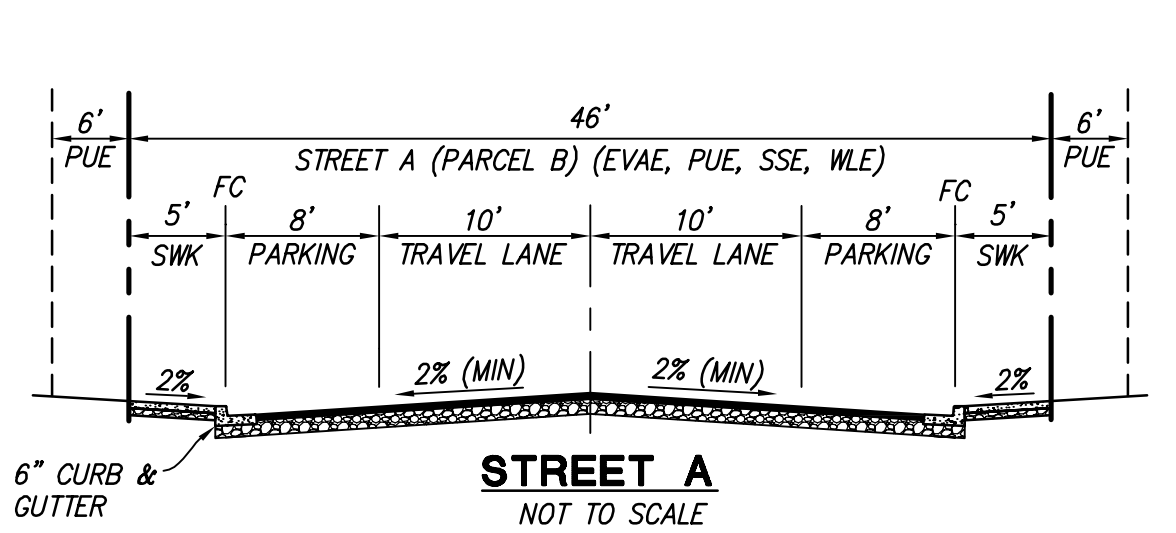
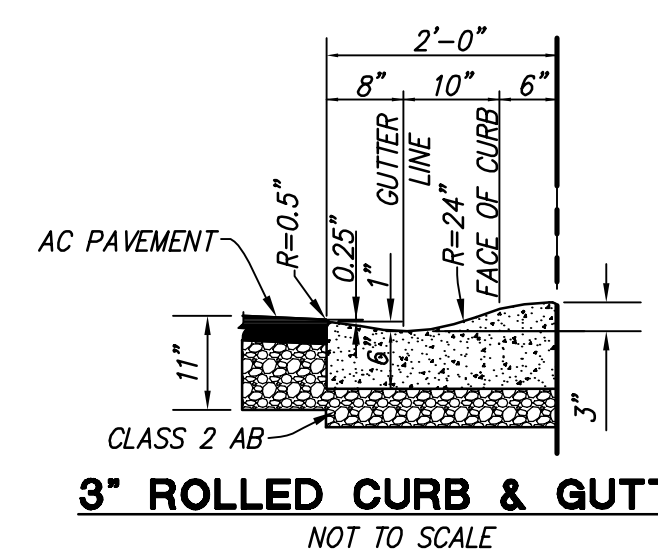
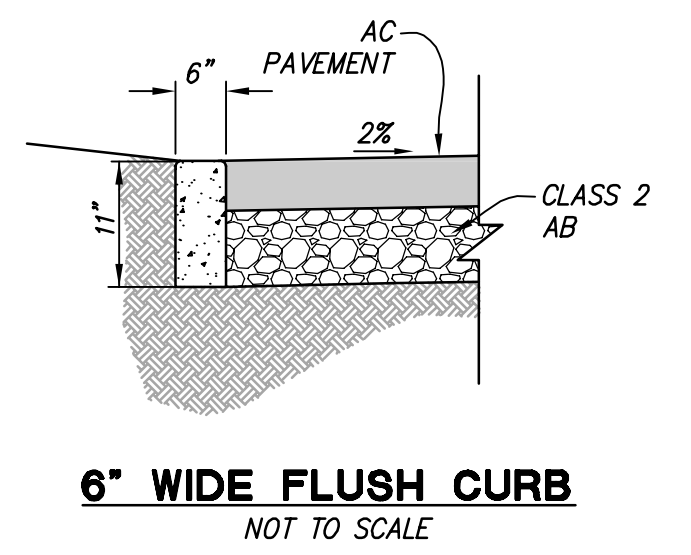
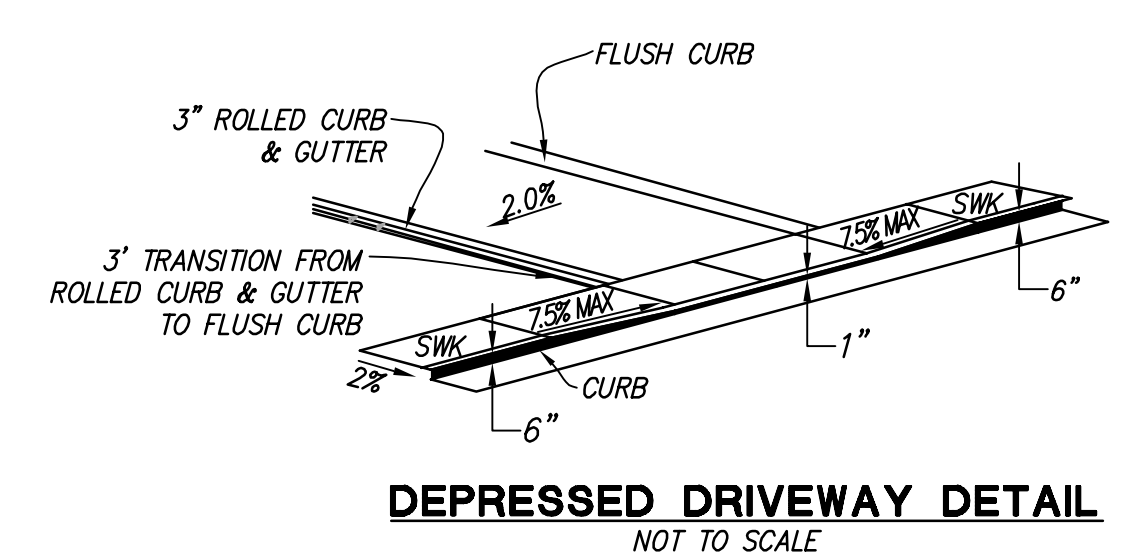
- NOTES:**
1. THE STOPPING SIGHT DISTANCE SHALL BE 360' FOR A DESIGN SPEED OF 45 MPH (POSTED AT 35 MPH) ACCORDING TO MUTCD TABLE 6C-2.

SITE DATA SUMMARY

1. GROSS AREA = 5.4± AC
2. PROPOSED NUMBER OF RESIDENTIAL LOTS = 47
3. PROPOSED GROSS DENSITY = 8.7 UNITS/ACRES
4. PROPOSED NET DENSITY = 10.8 UNITS/ACRES
5. OPEN SPACE PARCEL:
 - a. PARCEL A = 0.31± AC (13,381 SF)
6. PRIVATE STREETS/COURTS:

a. STREETS A & B (PARCEL B)	= 1.04± AC (45,177 SF)
b. COURT A (PARCEL C)	= 0.08± AC (3,675 SF)
c. COURT B (PARCEL D)	= 0.10± AC (4,193 SF)
d. COURT C (PARCEL E)	= 0.05± AC (2,127 SF)
TOTAL	= 1.27± AC (55,172 SF)
7. PARKING:

a. GARAGE	= 94
b. DRIVEWAY	= 94
c. ON-SITE STREET	= 23
TOTAL	= 211



SITE DEVELOPMENT PLAN
TRACT 8581 - LA PLAYA COMMONS
CITY OF HAYWARD, ALAMEDA COUNTY, CALIFORNIA
FOR: D.R. HORTON

RJA
RUGGERI-JENSEN-AZAR
ENGINEERS • PLANNERS • SURVEYORS
4690 CHABOT DRIVE, SUITE 200 PLEASANTON, CA 94588
PHONE: (925) 227-9100 FAX: (925) 227-9300

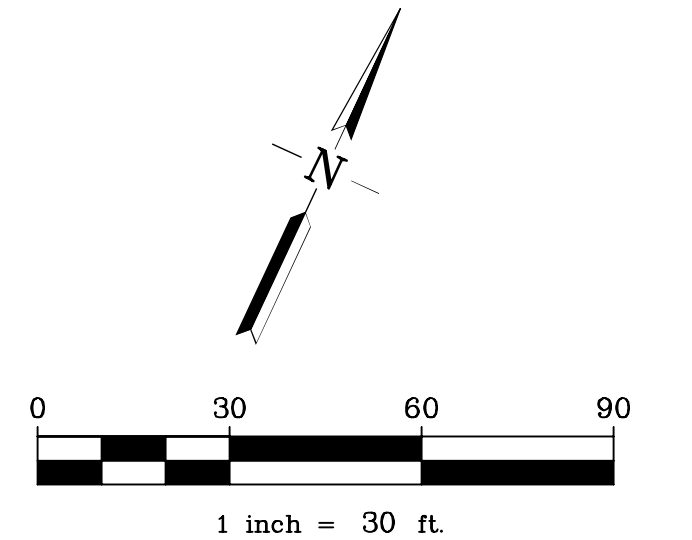
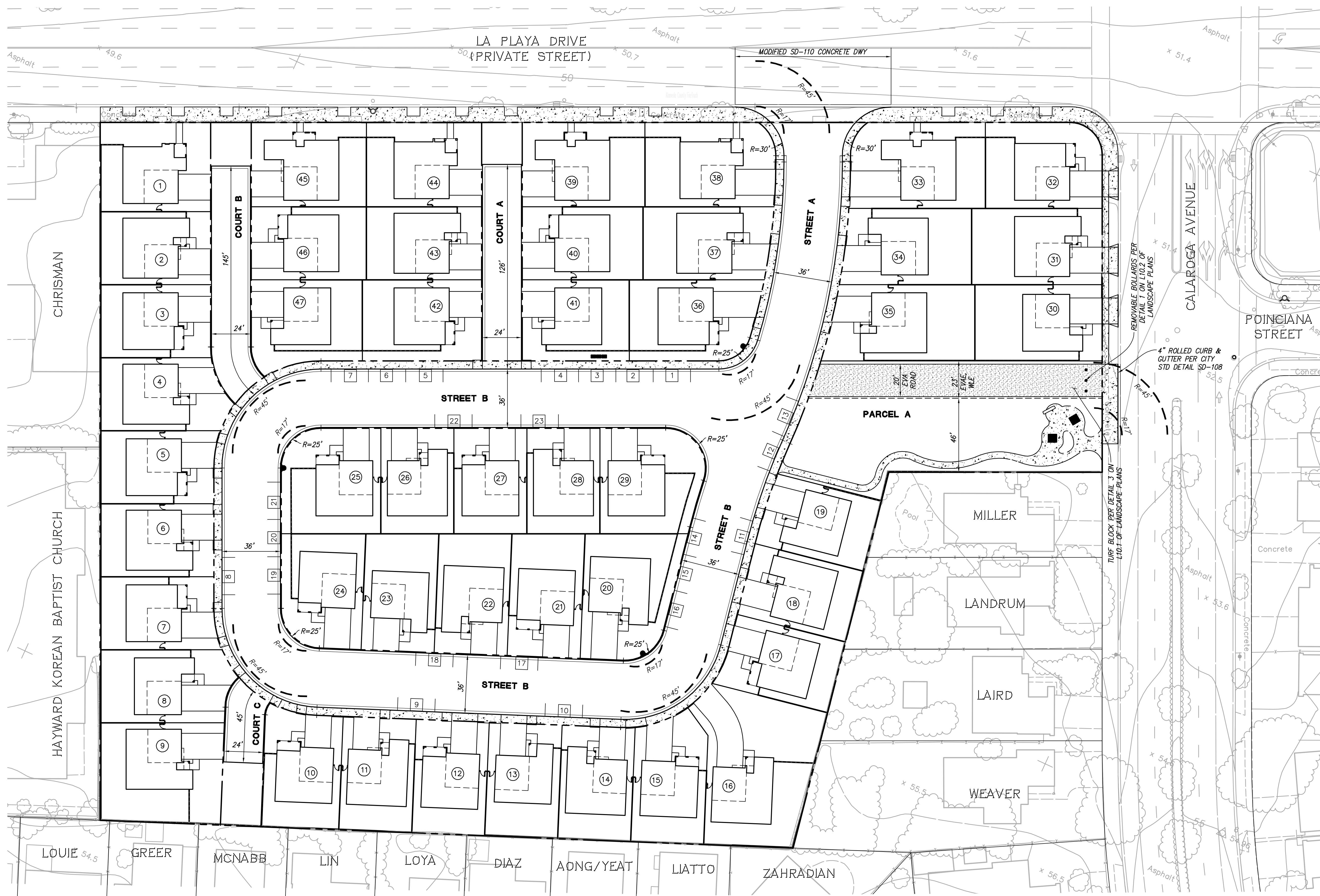
C:\WORK\2019\010981\CAD FILES\100-EMPHASIS SITE DEVELOPMENT PLANNING 3/27/2021 1:41:49 PM ERIC HO

LOT COVERAGE AND SETBACK TABLE													
LOT NO.	PLAN TYPE	FOOTPRINT SIZE (SQ.FT.)	LOT SIZE (SQ. FT.)	LOT COVERAGE		FRONT YARD SETBACK (FT.)		SIDE YARD SETBACK (FT.)		REAR YARD SETBACK (FT.)		SIDE STREET YARD SETBACK (FT.)	
				PROVIDED	MAXIMUM*	PROVIDED	MINIMUM*	PROVIDED	MINIMUM*	PROVIDED	MINIMUM*	PROVIDED	MINIMUM*
1	PLAN 2B (SIDE)	1280	3740	34%	40%	15	20	5	5	14	20	15	10
2	PLAN 3C	1369	3060	45%	40%	13	20	4	5	14	20	-	-
3	PLAN 2A	1241	3061	41%	40%	16	20	5	5	14	20	-	-
4	PLAN 3B	1379	3386	41%	40%	20	20	4	5	14	20	-	-
5	PLAN 2A	1241	3181	39%	40%	16	20	5	5	16	20	-	-
6	PLAN 3B	1379	3150	44%	40%	13	20	4	5	16	20	-	-
7	PLAN 2C	1243	3193	39%	40%	16	20	5	5	16	20	-	-
8	PLAN 1B	1135	3554	32%	40%	19	20	5	5	21	20	-	-
9	PLAN 3A	1369	4638	30%	40%	17	20	4	5	16	20	-	-
10	PLAN 2B	1241	3433	36%	40%	17	20	5	5	16	20	-	-
11	PLAN 3A	1369	3150	43%	40%	13	20	4	5	16	20	-	-
12	PLAN 2B	1241	3150	39%	40%	16	20	5	5	16	20	-	-
13	PLAN 1A	1135	3150	36%	40%	12	20	5	5	21	20	-	-
14	PLAN 3C	1369	3152	43%	40%	13	20	4	5	16	20	-	-
15	PLAN 2A	1241	3404	36%	40%	20	20	5	5	16	20	-	-
16	PLAN 3B	1379	6161	22%	40%	35	20	4	5	14	20	-	-
17	PLAN 2A	1241	3142	40%	40%	16	20	5	5	15	20	-	-
18	PLAN 3B	1379	3105	44%	40%	13	20	4	5	15	20	-	-
19	PLAN 1A	1135	3065	37%	40%	14	20	5	5	17	20	-	-
20	PLAN 3A	1369	4210	33%	40%	17	20	5	5	13	20	10	10
21	PLAN 2C	1243	3422	36%	40%	16	20	5	5	21	20	-	-
22	PLAN 3B	1379	3341	41%	40%	13	20	4	5	19	20	-	-
23	PLAN 1C	1135	3259	35%	40%	12	20	5	5	22	20	-	-
24	PLAN 2A	1241	3459	36%	40%	17	20	5	5	10	20	10	10
25	PLAN 2B	1241	3862	32%	40%	16	20	5	5	11	20	15	10
26	PLAN 3C	1369	2925	47%	40%	13	20	4	5	11	20	-	-
27	PLAN 2A	1241	2925	42%	40%	16	20	5	5	11	20	-	-
28	PLAN 3B	1379	2925	47%	40%	13	20	4	5	11	20	-	-
29	PLAN 2C	1243	3889	32%	40%	16	20	5	5	11	20	16	10
30	PLAN 1A	1135	3689	31%	40%	12	20	6	5	29	20	-	-
31	PLAN 3C	1369	3783	36%	40%	13	20	5	5	26	20	-	-
32	PLAN 2B	1241	3730	33%	40%	15	20	5	5	18	20	12	10
33	PLAN 3A (SIDE)	1472	4351	34%	40%	17	20	5	5	18	20	11	10
34	PLAN 1C	1135	3671	31%	40%	12	20	6	5	26	20	-	-
35	PLAN 3B	1379	4168	33%	40%	18	20	5	5	29	20	-	-
36	PLAN 2A	1241	3814	33%	40%	17	20	5	5	17	20	10	10
37	PLAN 3B	1379	3518	39%	40%	17	20	4	5	20	20	-	-
38	PLAN 2C (SIDE)	1280	4098	31%	40%	17	20	5	5	21	20	12	10
39	PLAN 3B (SIDE)	1472	3952	37%	40%	8	20	4	5	21	20	11	10
40	PLAN 2A	1241	3352	37%	40%	16	20	5	5	20	20	-	-
41	PLAN 1C	1135	3300	34%	40%	12	20	5	5	17	20	10	10
42	PLAN 2B	1241	3675	34%	40%	16	20	5	5	19	20	10	10
43	PLAN 3C	1369	3195	43%	40%	13	20	4	5	17	20	-	-
44	PLAN 2C (SIDE)	1280	3562	36%	40%	15	20	5	5	17	20	12	10
45	PLAN 3A (SIDE)	1472	3822	39%	40%	8	20	4	5	17	20	11	10
46	PLAN 2C	1243	3195	39%	40%	16	20	5	5	17	20	-	-
47	PLAN 1B	1135	3569	32%	40%	12	20	5	5	19	20	10	10

* MAXIMUM LOT COVERAGE AND MINIMUM SETBACKS AS LISTED IN THIS TABLE ARE BASED ON SEC. 10-1.225 (LOT REQUIREMENTS) AND SEC. 10-1.230 (YARD REQUIREMENTS) FOR SINGLE-FAMILY RESIDENTIAL (RS) ZONING OF THE CITY OF HAYWARD ZONING ORDINANCE.

LOT COVERAGE AND SETBACK TABLE
TRACT 8581 - LA PLAYA COMMONS
 CITY OF HAYWARD, ALAMEDA COUNTY, CALIFORNIA
 FOR: D.R. HORTON





LEGEND

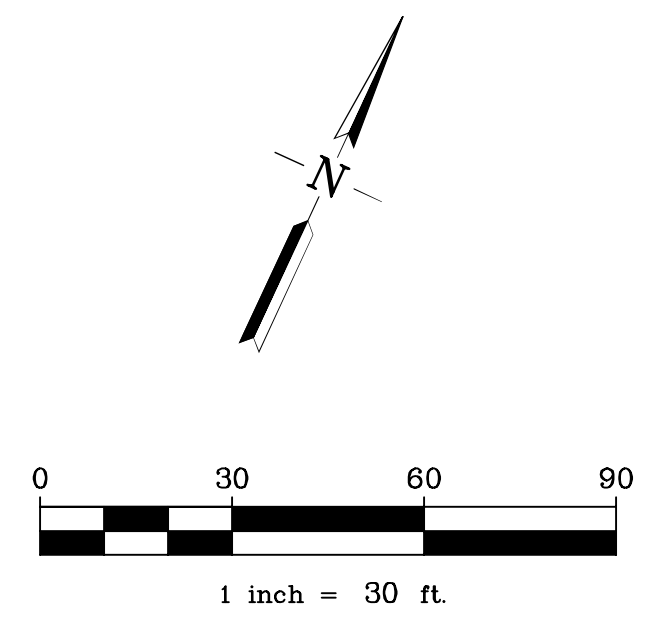
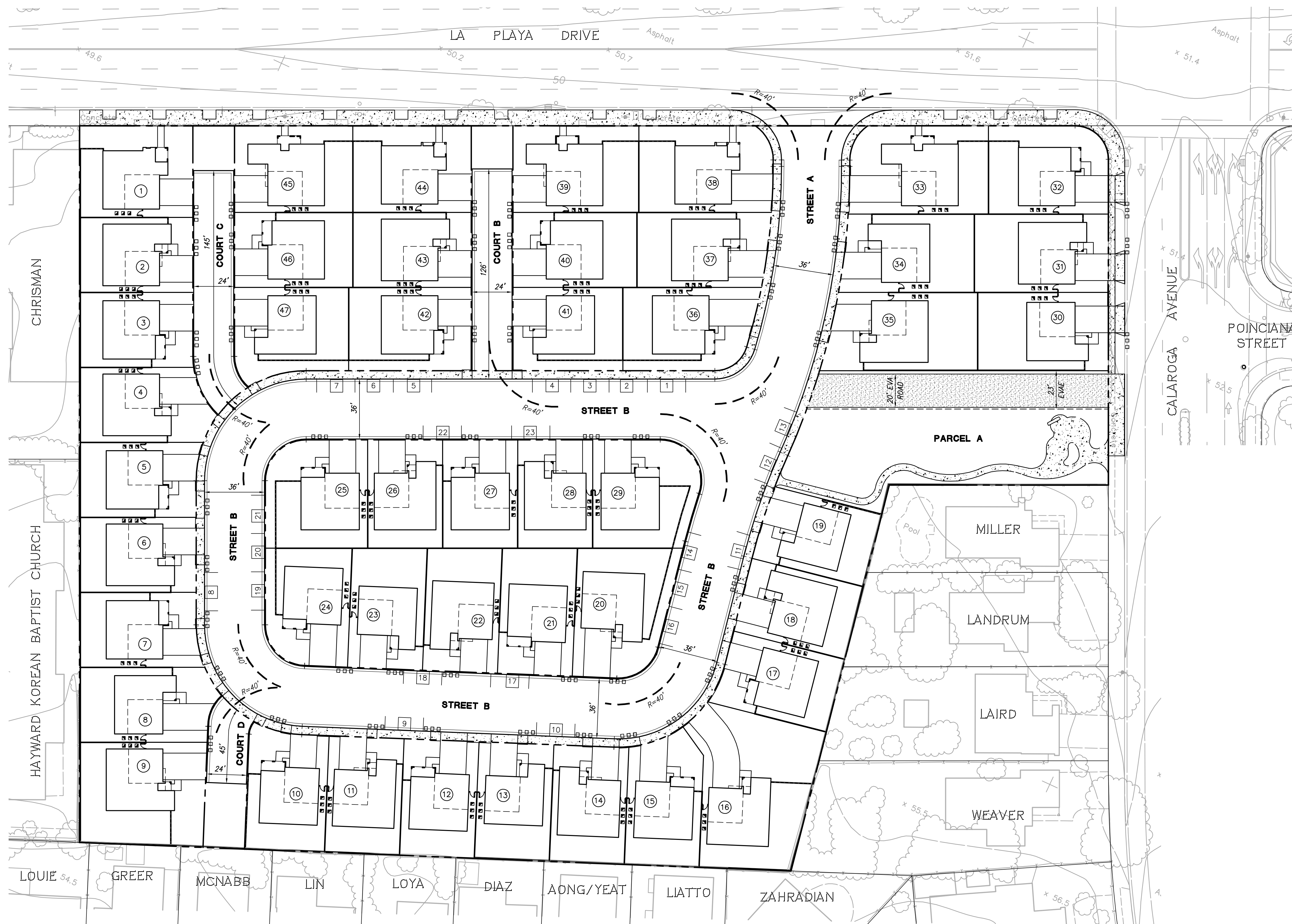
- EXISTING FIRE HYDRANT
- PROPOSED FIRE HYDRANT
- FIRE TRUCK ROUTE

FIRE TRUCK TURNING RADIUS PER CITY OF HAYWARD FIRE DEPARTMENT DETAIL SD-501

FIRE TRUCK CIRCULATION PLAN
TRACT 8581 - LA PLAYA COMMONS
 CITY OF HAYWARD, ALAMEDA COUNTY, CALIFORNIA
 FOR: D.R. HORTON

RJA
RUGGERI-JENSEN-AZAR
 ENGINEERS • PLANNERS • SURVEYORS
 4690 CHABOT DRIVE, SUITE 200 PLEASANTON, CA 94588
 PHONE: (925) 227-9100 FAX: (925) 227-9300

© 2020/2021 (91098) CAD FILES 100-EXHIBITS (P&E, ACCESS, EXHIBITING) 6/1/2021 3:40:20 PM EMC HD



- LEGEND**
- TRASH TRUCK ROUTE
 - TRASH BIN PLACEMENT ON PICKUP DAYS (22" X 25" PER BIN AT 2 FT APART)
 - TRASH BIN PLACEMENT ON NON-SERVICE DAYS (22" X 25" PER BIN AT 2 FT APART)

SOLID WASTE HANDLING PLAN
TRACT 8581 - LA PLAYA COMMONS
 CITY OF HAYWARD, ALAMEDA COUNTY, CALIFORNIA
 FOR: D.R. HORTON


RUGGERI-JENSEN-AZAR
 ENGINEERS • PLANNERS • SURVEYORS
 4690 CHABOT DRIVE, SUITE 200 PLEASANTON, CA 94588
 PHONE: (925) 227-9100 FAX: (925) 227-9300

© 2020/2019 (91098) CAD FILES 100-EXHIBITS TRASH COLLECTION EXHIBIT DWG 6/7/2020 3:41:33 PM ERIC HO