

Winton Loop	Tennyson Loop
<b>Peak hour service</b> (3 hrs AM, 3 hrs PM)	<b>Peak hour service</b> (3 hrs AM, 3 hrs PM)
<b>15 min headways</b>	<b>15 min headways</b>
<b>10.6 miles</b>	<b>11.5 miles</b>
<b>3 buses required</b>	<b>3 buses required</b>
<b>18 riders/hour</b>	<b>23 riders/hour</b>
<b>\$682k midpoint of annual cost estimate</b>	<b>\$682k midpoint of annual cost estimate</b>

# South Industrial Loop

Peak hour service  
(3 hrs AM, 3 hrs PM)

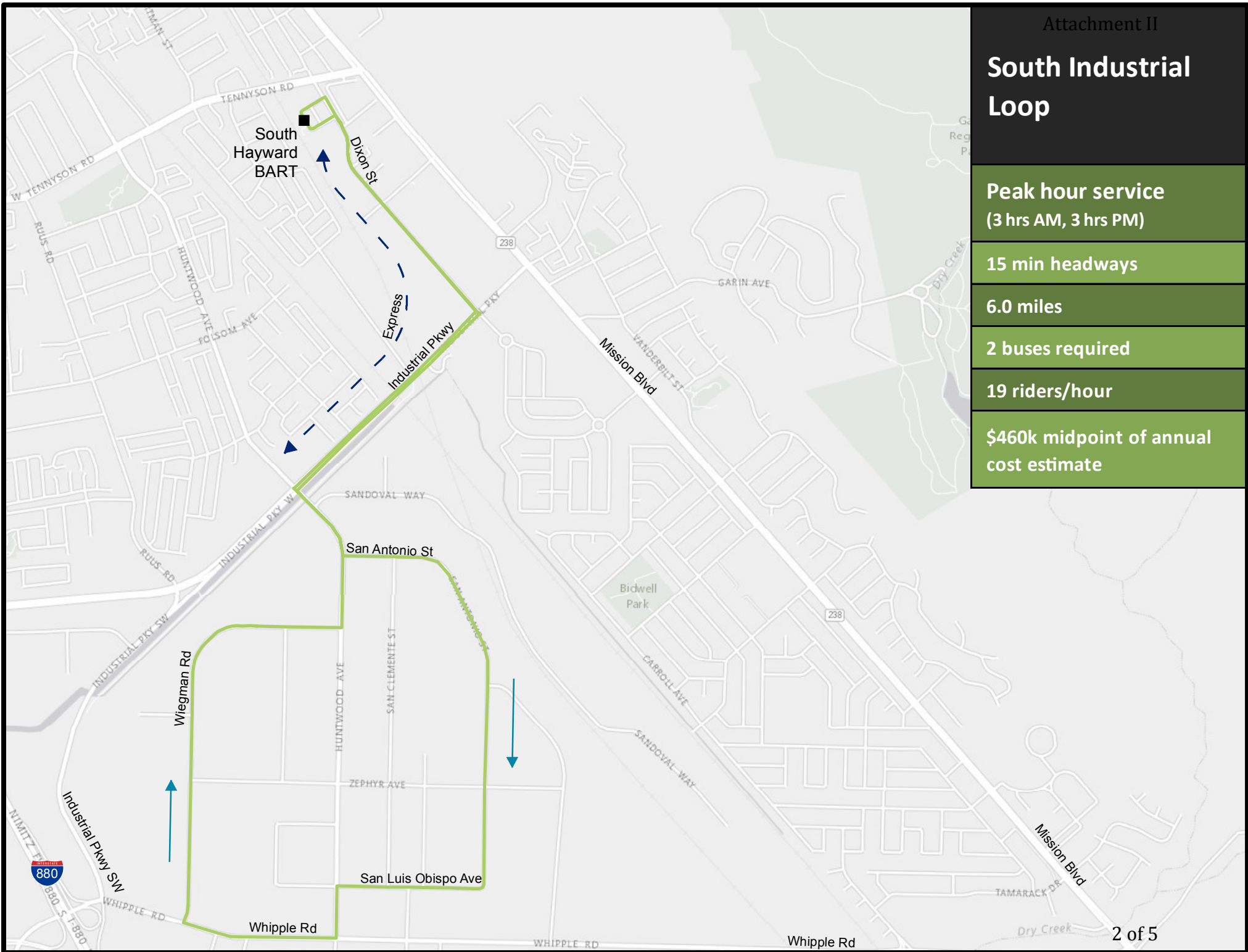
15 min headways

6.0 miles

2 buses required

19 riders/hour

\$460k midpoint of annual  
cost estimate



# Amtrak/Cannery to Downtown Loop

Peak hour service  
(3 hrs AM, 3 hrs PM)

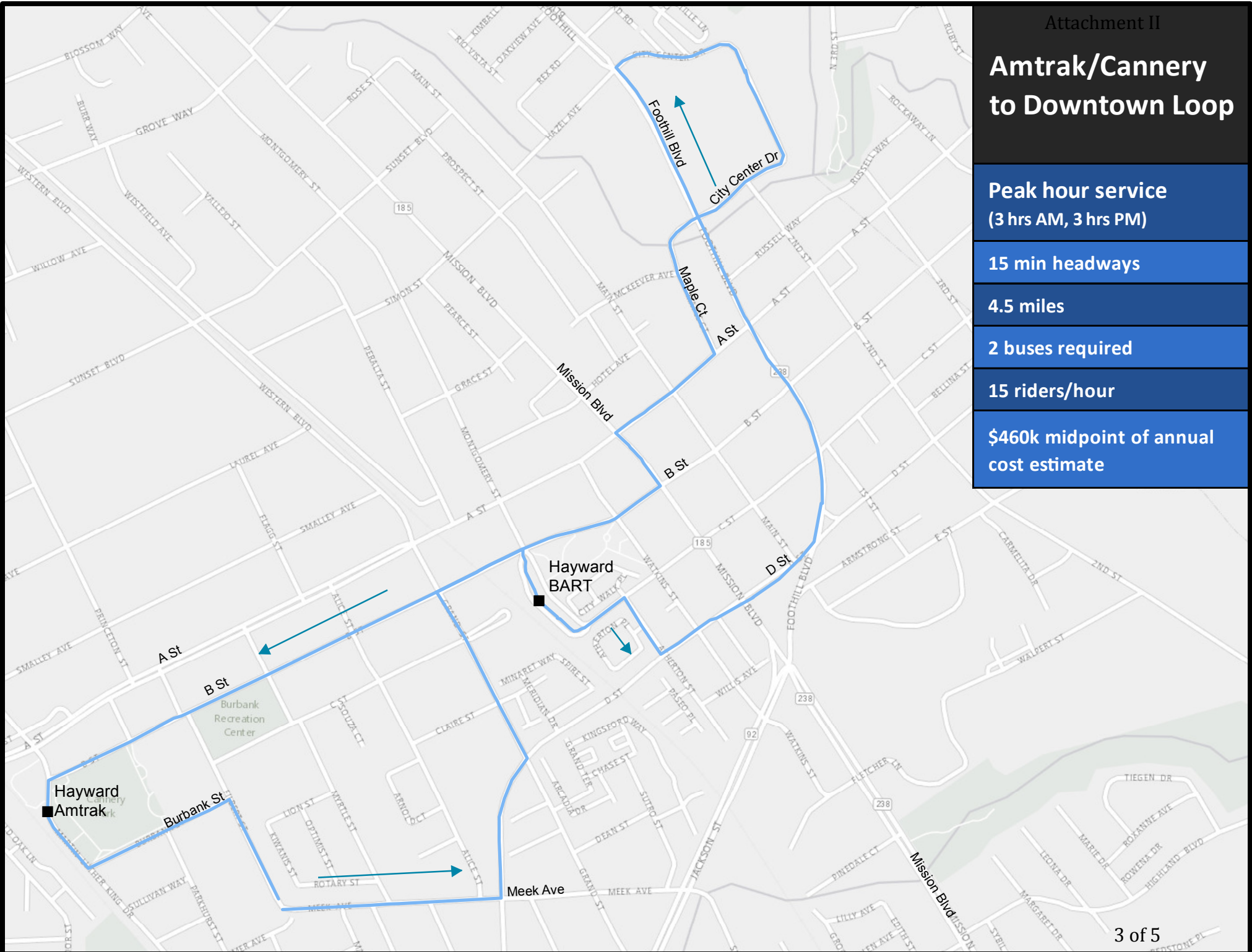
15 min headways

4.5 miles

2 buses required

15 riders/hour

\$460k midpoint of annual cost estimate





# Fairway Park to Downtown

**Peak hour service**  
(3 hrs AM, 3 hrs PM)

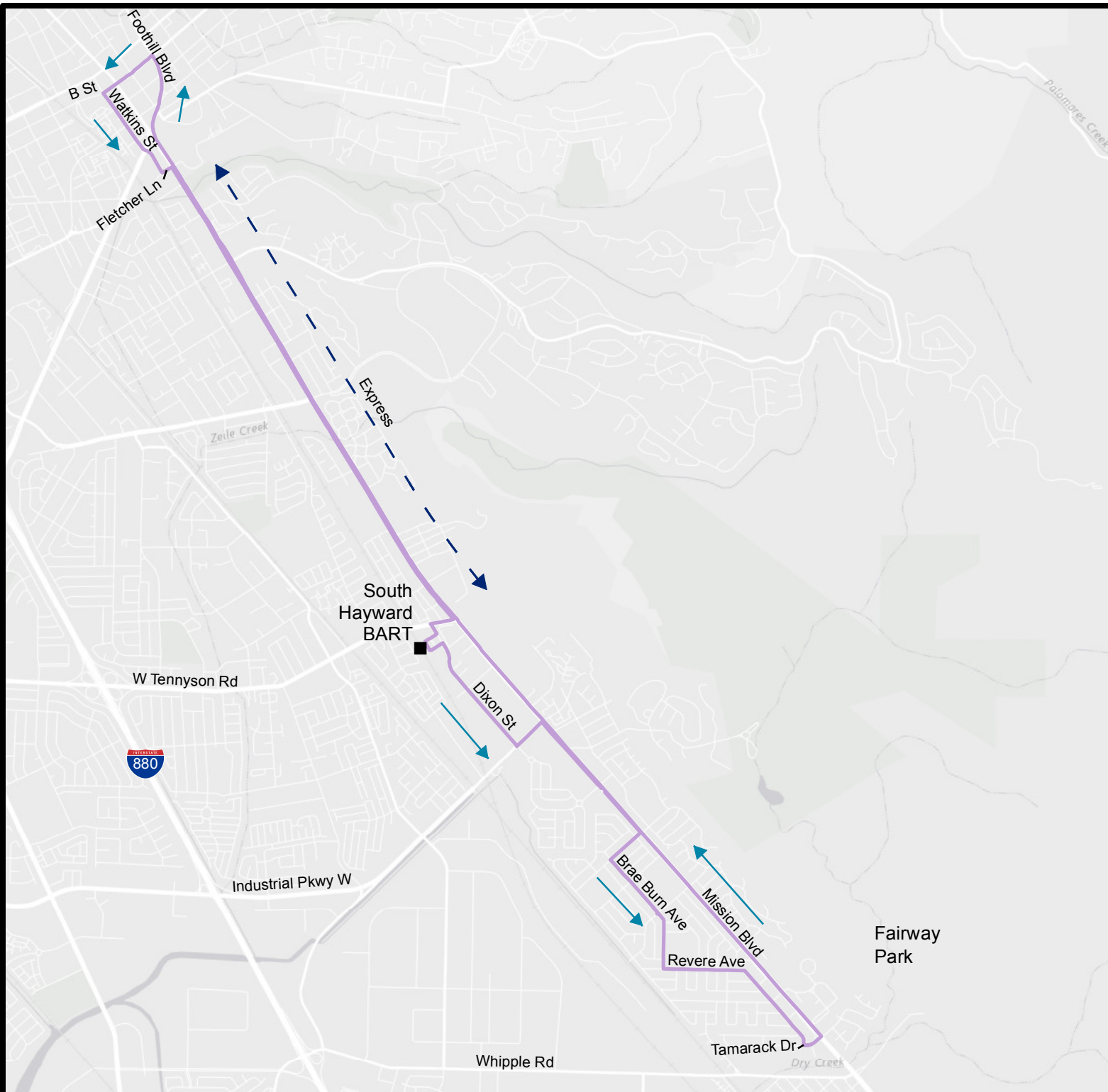
**15 min headways**

**12.5 miles**

**4 buses required**

**5 riders/hour**

**\$905k midpoint of annual  
cost estimate**





# CSUEB/Hills Loop

**Peak hour service**  
**(3 hrs AM, 3 hrs PM)**

**15 min headways**

**10.2 miles**

**3 buses required**

**10 riders/hour**

**\$682k midpoint of annual  
cost estimate**

