

October 2018

# DOCUMENTATION OF BUSINESSES AT 24701 CLAWITER ROAD

## ECONOMY TRUCKING SERVICES BAY AREA CONCRETE RECYCLING SLURRY SOLUTIONS

**Submitted To:**

Bay Area Concrete Recycling LLC  
24701 Clawiter  
City of Hayward, CA 94545

**Submitted By:**

TBI Engineering  
Civil Environmental Engineers  
480 Tan Oak Terrace  
Sunnyvale, CA 94086

**Distribution:**

1 copies – Bay Area Concrete Recycling LLC  
1 copies – City of Hayward



*Signed & Stamped on  
October 22, 2018*

## Contents

### Table of Contents

<b>EXECUTIVE SUMMARY .....</b>	<b>4</b>
<b>ECONOMY TRUCKING SERVICES.....</b>	<b>5</b>
ECONOMY TRUCKING SERVICES BUSINESS SETTING .....	5
ECONOMY BUSINESS DESCRIPTION.....	5
ECONOMY BUSINESS OPERATIONS .....	5
Personnel .....	5
Hours of Operation .....	5
Traffic Flow .....	6
<b>Slurry Solutions.....</b>	<b>6</b>
SS&R™ BUSINESS SETTING .....	6
SS&R™ BUSINESS DESCRIPTION .....	6
SS&R™ DETAILED BUSINESS OPERATIONS .....	6
Personnel .....	6
Description of Operations .....	7
Hours of Operation .....	7
Traffic Flow .....	7
<b>BAY AREA CONCRETE RECYCLING (BACR).....</b>	<b>8</b>
BACR BUSINESS SETTING .....	8
BACR BUSINESS DESCRIPTION.....	8
BACR DETAILED BUSINESS OPERATIONS.....	8
Description of Operations .....	8
Hours of Operation .....	8
Traffic Flow .....	9
<b>ENVIRONMENTAL CONTROLS FOR THE DIFFERENT BUSINESSES .....</b>	<b>10</b>
Hazardous Materials .....	10
Noise .....	10
Dust Control .....	10
Stormwater .....	11
<b>SUMMARY OF PROPOSED ADDITIONAL ENVIRONMENTAL CONTROLS .....</b>	<b>12</b>
Site Wide Improvement and Actions .....	12
Economy Trucking Services (Economy) .....	12
Bay Area Concrete Recycling (BACR) .....	13
Slurry Solutions .....	13

## LIST OF FIGURES

SHEET 1     Topographic Site Map inclusive of Business Delineations

## ATTACHMENTS

Attachment A	Slurry Solutions Business License
Attachment B	Economy Trucking Services Business License

## EXECUTIVE SUMMARY

As part of the Continuance for Temporary Permit AUP application by Bay Area Concrete Recycling LLC (BACR) has committed that all “users and uses” on the 24701 Clawiter Road Address would be identified and furthermore identified where each business operates on the Detailed Site Map (Sheet 1).

This “documentation of uses” package as detailed below consists of description of the businesses, with a detailed existing project description of each of the businesses, project operational details and project environmental controls.

In summary there are three (3) businesses operating at the 24701 Clawiter Road address as of October 2018:

- **Economy Trucking Services:** a fully service truck repair facility, solely occupying the maintenance shop and tire shop. Due to the inherent nature of the repair of trucks, some trucks are parked outside the maintenance facility waiting to be repaired on paved, improved surface. Heavy equipment from a contractor is temporary stored at the site; mainly to be maintained and repaired in the northeastern portion of the yard, no rental of equipment is occurring. Economy Trucking Services has a valid business license in the City of Hayward (attachment A).
- **Slurry Solutions** occupies the site more towards the southwestern portion of the site behind the maintenance shop on a concrete pad. At Slurry Solutions the contaminant-free slurries/soils (wet spoils) received at this commercial facility are typically generated during physical utility location in public right of ways, and directional drilling for placement of underground pipes or utilities or other private property construction. The service offered at this location, operated on concrete pavement separates the “soils/solids” (dirt) from the water. Water is reused in the process and provides dust control water for the Bay Area Concrete Recycling facility as well. Slurry Solutions has a valid business license in the City of Hayward (Attachment B). The facility does not recycle (and is NOT a recycling facility) since recycling is defined<sup>1</sup> as: using waste as material to manufacture a new product. Recycling involves altering the physical form of an object or material and making a new object from the altered material. The facility is however, reusing the wet spoils as it is not “manufacturing” a new object. Reuse is defined as: using an object or material again, either for its original purpose or for a similar purpose, without significantly altering the physical form of the object or material.
- **Bay Area Concrete Recycling** is a Type A inert processing facility and is located on the 2 to 2.5 acres in the northwestern portion of the site. Typically raw materials, consisting of broken concrete, bricks, and asphalt are “crushed” into smaller pieces which are then resold as a Recycled Caltrans Type II Aggregate Base or potentially further screened into recycled drain rock and sand. Bay Area Concrete Recycling does not have a business license in the City of Hayward; it does have the majority of the other required “use

---

<sup>1</sup> <https://www.calrecycle.ca.gov/reducewaste/define#Recycling>

permits to operate at the site”. BACR is working on appropriate permanent airboard permits versus the current temporary permits it is operating under.

- **Ambreesh Cosmetics** used to have offices at 24701 Clawiter Road; however it recently moved to its new Winton address and has a Business License in the City of Hayward at the Winton address.

This “documentation of uses” packages finish with a brief summary.

## ECONOMY TRUCKING SERVICES

This detailed business description details how the Economy Trucking Service facility operates.

### ECONOMY TRUCKING SERVICES BUSINESS SETTING

This business is located in the City of Hayward on the southeastern portion of a 4.76-acre site (parcel 439-0020-002-03) at 24701 Clawiter Road. The property is zoned Industrial and is surrounded by industrial uses. The nearest residence is approximately 1,500 feet from the property. The entire property has industrial uses to the north and south, Clawiter Road borders the property to the east and a Union Pacific railroad corridor borders the property to the west (Sheet #1).

### ECONOMY BUSINESS DESCRIPTION

**Economy Trucking Services:** a fully service truck repair facility, solely occupying the maintenance shop and tire shop. Due to the inherent nature of the repair of trucks, some trucks are parked outside the maintenance facility waiting to be repaired. Heavy equipment from a contractor is stored at the site; to be maintained and repaired in the northeastern portion of the yard. Economy Trucking Services has a valid business license in the City of Hayward.

Adequate Parking spaces are provided along the southeastern portion of the site (see sheet #1).

### ECONOMY BUSINESS OPERATIONS

#### Personnel

Economy Trucking Services truck repair shops has a total of 5 permanent repair technicians under the direction of a shop manager. The front office manages the accounting and financial components of the business and has a total of 7 people managing the business under the leadership of the General Manager, Mike Mostipak.

#### Hours of Operation

Economy Trucking Services truck repair shops operates 24 hours a day and 7 days a week, but will typically operate the facility 6 days a week from 5.30 a.m. to 5.30 p.m.



## Traffic Flow

Trucks enter the site either from the one-way portion of Clawiter road where it splits into Industrial Boulevard. Trucks will then make a right-hand turn into the property from Clawiter, trucks could be entering the facility from the south as well either from Clawiter or Industrial Road. All truck traffic will have a designated flow pattern after entering the site. The trucks will drive towards the maintenance shop. They then either proceed into the maintenance shop or they get an allocated parking spot onto concrete pavement. All outbound trucks travel past the existing tire shop on the right toward Clawiter Road and either proceed straight to access Industrial Boulevard or make a right-hand turn and proceed south on Clawiter Road.

## Slurry Solutions

This detailed business description details how the Slurry Separation and Reuse™ (SS&R™) facility operates at Clawiter Road.

### SS&R™ BUSINESS SETTING

This business is located in the City of Hayward on the southwestern portion of a 4.76-acre site (parcel 439-0020-002-03) at 24701 Clawiter Road. The property is zoned Industrial and is surrounded by industrial uses. The nearest residence is approximately 1,500 feet from the property. While there are two easements that are along the western portion of the property, parallel with the rail road tracks. The first being a PG&E Gas Line easement that requires a 15 foot setback and the second is a City and County of San Francisco Water Pipeline easement that requires a 40 foot setback. The SS&R™ facility most western point starts at the 40 ft setback.

### SS&R™ BUSINESS DESCRIPTION

Slurry “Waste” Solutions occupies the site more towards the southwestern portion of the site behind the maintenance shop on a concrete pad. At Slurry Solutions the contaminant-free slurries/soils received at this commercial facility are typically generated during physical utility location in public right of ways, and directional drilling for placement of underground pipes or utilities or other private property construction. The service offered at this location, operated on concrete pavement separates the “soils/solids” (dirt) from the water. Water is reused in the process and provides dust control water for the Bay Area Concrete Recycling facility as well. Slurry Solutions has a valid business license in the City of Hayward.

### SS&R™ DETAILED BUSINESS OPERATIONS

#### Personnel

Slurry Solutions has a total of 2 treatment technicians under the direction of a supervisor. The front office manages the accounting and financial components of the business and has a total of 3 people managing the business under the leadership of the CEO and General Manager, Kevin Oliveiro.

## Description of Operations

Slurry materials generated by hydro excavation to locate physical utility location in public right of ways, and directional drilling for placement of underground pipes or utilities or other private property construction is separated into its different texture classes gravel, coarse and fine sands, and fine soils. Slurry Materials (wet spoils) are brought to the site in trucks with typically vacuum trailers, tankers or equivalent. Trucks will unload their slurry into the hopper located on the eastern portion of the facility from the access ramp. From there the material falls by gravity over a high capacity screen deck, which separates the 1/16<sup>th</sup> fraction of the materials and deposits the gravel material into a ramp area. The remaining slurry materials gets pumped over additional screens which remove the coarse sands and then the finer sands. The remaining final slurry materials are separated in a decanter centrifuge and moved along with a conveyor belt which stockpiles this material into a finished stockpile. Typically, a front-end loader takes the finished stockpile materials and loads it into trucks that have come to the facility for clean imported fill materials and are reused for urban infill projects.

## Hours of Operation

The business operates potentially 7 days a week, but will typically operate the facility 6 days a week from 7.30 a.m. to 5.00 p.m.

## Traffic Flow

Trucks enter the site either from the one-way portion of Clawiter road where it splits into Industrial Boulevard. Trucks will then make a right-hand turn into the property from Clawiter, trucks could be entering the facility from the south as well either from Clawiter or Industrial (Sheet 1). All Slurry truck traffic will have a designated flow pattern after entering the site. The trucks will drive parallel towards the southern property line towards the western portion of the property, where the SS&R™ facility is located. The inbound vacuum or tanker trucks stop near the yard manager to complete the tags and to be load-checked. Following checks, the trucks continue directly to the facility to unload their load into the hopper. All outbound trucks travel past the existing warehouse structures on the right toward Clawiter Road and either proceed straight to access Industrial Boulevard or make a right-hand turn and proceed south on Clawiter Road.



## BAY AREA CONCRETE RECYCLING (BACR)

This detailed business description details how the temporary Type A inert concrete/asphalt recycling facility operates at Clawiter Road.

### BACR BUSINESS SETTING

The business is located in the City of Hayward on the northwestern portion of a 4.76-acre site (parcel 439-0020-002-03) at 24701 Clawiter Road. The property is zoned Industrial and is surrounded by industrial uses. The nearest residence is approximately 1,500 feet from the property. The property has industrial uses to the north and south, Clawiter Road borders the property to the east and a Union Pacific railroad corridor borders the property to the west (Sheet #1). There are two easements that are along the western portion of the property, parallel with the rail road tracks. The first being a PG&E Gas Line easement that requires a 15 foot setback and the second is a City and County of San Francisco Water Pipeline easement that requires a 40 foot setback.

### BACR BUSINESS DESCRIPTION

The Type A Inert Recycling operation was developed and is operational on the northwestern (back) approximately 2.15 acre portion of the site, beginning approximately 375 feet from Clawiter Road (Sheet 1). The remaining portion of the northwestern site will remain hard compacted ground and will accommodate the raw material stockpile, crushing equipment, and finished aggregate stockpile. A secondary contained portable bathroom facility will be available between both warehouse building structures. Adequate Parking spaces will be provided along the southeastern portion of the site and the northeastern portion of the property will also have a 10 ft landscaped area (consisting of a vegetated swale) along the northern fence line as required by the municipal code.

### BACR DETAILED BUSINESS OPERATIONS

#### Description of Operations

Type A inert demolition debris from demolition construction business is reprocessed and broken down to create Caltrans Recycled Aggregate Base for new construction projects. Broken Type A inerts are brought to the site in trucks with typically end-dump trailers or equivalent. Trucks will unload their broken concrete/asphalt (type A inerts) into the raw material stockpile located in the far western portion of the site. From there the concrete is moved with the use of a front-end loader or excavator and deposited into the crusher. The crusher does breakdown larger pieces of concrete and screens the broken concrete into the desired size of the aggregate base. When the aggregate base meets the desired size, it is separated and moved along conveyor belt(s), which empties the aggregate base rock into a finished stockpile. The front-end loader takes the aggregate base from the finished stockpile and loads it into trucks that have come to the facility for aggregate base.

#### Hours of Operation

The business is seeking a temporary permit to operate 24 hours a day and 7 days a



week, but will typically operate the facility 5 days a week from 7.30 a.m. to 3.30 p.m.

### Traffic Flow

Trucks enter the site either from the one-way portion of Clawiter road where it splits into Industrial Boulevard. Trucks will then make a right-hand turn into the property from Clawiter, trucks could be entering the facility from the south as well either from Clawiter or Industrial (Sheet 1). All truck traffic will have a designated flow pattern after entering the site. The trucks will drive towards the northern property line to western portion of the property, where the type A inert recycling facility is located. The inbound trucks stop near the yard manager to complete the tags and to be load-checked. The loads of recycled concrete/asphalt are monitored for contaminated or potentially illegal materials. Following inspection, the trucks continue counter-clockwise to the concrete raw material pile to drop their load. They then either proceed back to the yard manager or they receive a new load of finished aggregate base rock that has been produced from crushing and screening the recycled concrete/asphalt. All outbound trucks travel past the existing warehouse structures on the right toward Clawiter Road and either proceed straight to access Industrial Boulevard or make a right-hand turn and proceed south on Clawiter Road.

## ENVIRONMENTAL CONTROLS FOR THE DIFFERENT BUSINESSES

### Hazardous Materials

While the **Economy Trucking Services** shop works inherently with “hazardous materials” such as new oils, used oils, and other oily substances; as well as compressed gasses (torching and welding). The Economy Trucking Services has the appropriate controls, such as secondary containment for oils, as well as an appropriate Spill Prevention Controls and Countermeasures Plan (SPCC plan) to have and manage those type of materials in the Maintenance Shop.

The **SS&R™ facility** only processes “clean” slurries, as a result hazardous material would have been “eliminated” into the pre-screening process. Which consists of analytical testing and documenting that materials are being extracted from a clean (non-impacted) site.

For **Bay Area Concrete Recycling** to prevent hazardous materials from being dumped with the loads of broken concrete, the yard manager inspects the materials received at the site for potential contamination, with particular attention to color and request source of the type A inerts. If materials are stained, or exhibit any form of petroleum contamination, they are rejected. The yard manager can use a photo ionization detector (PID) to evaluate any volatile organic compounds that may be detected from the soil contained in a load. If the levels exceed 10 particles per million (ppm), the materials are rejected and cannot be allowed to dump.

All equipment used at the entire property are powered with diesel fuel or be electric powered and all be registered with DOORS. Typically, a diesel refueling truck from an outside contractor visits the site daily to refill the trucks' fuel tanks. Any other petroleum product or hazardous material in small quantities necessary to operate the Economy Truck Services and concrete recycling plant are stored inside the maintenance shop with appropriate controls.

### Noise

The most substantial levels of noise generated from the operation on the entire parcel are the diesel engines of the heavy equipment on-site that are used to move the materials from typically one stockpile and into the processing equipment, or other stockpile. The crushers and vibrating screens of the crushing and Slurry plant are a source of noise from the operations. However, based on reports by the equipment's manufacturer(s), that noise is dissipated to approximately 50 decibels at a distance of 200 feet away. Therefore, the noise levels will be at/or below 50 decibels at the property line. Raw Material stockpiles and finished material stockpiles can, and should, be optimally situated to block noise from areas of concern.

### Dust Control

While dust is generated potentially by trucks (by releasing the air underneath the motor compartment) from the **Economy Trucking Services**, this will be improved by repairing

the broking pavement currently present in front of the maintenance and tire shops (see next section).

Typically, “none” to any dust is generated from the **Slurry Separation and Reuse facility**. Mainly because of the inherit nature of the wetness of the material(wet spoils) received.

Dust from the **Bay Area Concrete Recycling** facility is controlled using a state-of-the-art dust suppression system designed specifically for the crushing equipment that is used at all times at this facility. The spray system is manually controlled using shut-off valves that enable the operator to adjust the amount of water used at each location of the crushing and screening plant in accordance with airboard regulations. The water used in the state-of-the-art dust suppression system pulls water from the Slurry Separation and Reuse™ facility.

Near the dumping area of the raw material trucks a Dustboss™ DB-30 shall be installed to control the dust generated there. The Dustboss™ will provide a small particle mist to knock down those.

Furthermore, a water truck will be used to wet the nonpaved areas of the facility during dry seasons, a regenerative sweeper will be utilized to vacuum the dust particles on the concrete or asphalt paving. The water truck will also pull water from the Slurry Separation and Reuse™ facility.

### Stormwater

A stormwater pollution prevention plan has been prepared under the General Industrial Stormwater Permit for the Slurry Separation and Reuse™ facility through the Regional San Francisco Bay Area Regional Water Quality Control Board. The northwestern portion of the facility is currently graded so that surface waters flow toward the Slurry Separation and Reuse™ facility (Sheet #1). The Slurry Separation and Reuse™ facility has the capacity to contain all of the stormwater generated from the back portion of the site. Stormwater generated from the type A inert facility is not released into a municipal stormwater system. The type A inert facility together with the Slurry Separation and Reuse™ facility are self-contained.

Sediment track-out from the unpaved portions of the site is a potential realistic scenario. The facility has installed a total length of 32ft long track out grates (TOG) assembly which every truck needs to drive over before transitioning on the paved portions of the site. Furthermore, a regenerative sweeper is operated at all times the facility is in operation to assure that sediment trackout is controlled at all times on the paved portions of the facility as well as onto the public driveway.

## SUMMARY OF PROPOSED ADDITIONAL ENVIRONMENTAL CONTROLS

The City of Hayward has identified potential immediate treats to Health and Safety at the multiple businesses. The below is a summary list of the commitments the owner and businesses are willing to make to address the environmental aspects mainly related to dust and water (surface water run-off).

### Site Wide Improvement and Actions

- A licensed Civil Engineer and landscape architect was retained by October 15, 2018 to complete a set of site improvement plans and landscape plans for the frontage improvements (a minimum 20 ft landscape buffer and decorative screen wall and ornamental gate) alongside Clawiter Road. The selected Civil Engineering firm is Milani and Associates (<https://www.milaniassociates.com/about.html>) and the selected Landscape Architect is Thomas Baak And Associates, LLP to submit a full set of frontage improvement plans is end of October 2018.
- The Civil Engineer will prepare a full set of Site Improvement plans based on the completed topographic survey exhibit. The Site Improvement plans will be submitted to the City of Hayward by the end of November 2018. The site improvement plans show existing pavement and drainage infrastructure on the entire parcel and will include a set of grading, drainage and pavement plans.

### Economy Trucking Services (Economy)

#### *Ultra Short Term*

- Submit the required improvement plans for downstairs and upstairs remodel in the tire shop to become compliant with California Building Code (CBC).
- Certain designated truck parking spots to temporary store trucks have been so severely trafficked that the asphalt or concrete pavement is in grave disrepair. Economy to repair those locations in grave disrepair immediately.
- While trucks are awaiting repair or tire changes, the air release from motor compartment has a potential to blow a lot off dust left on the pavement. Economy to sweep the entire improved parking lot (curb to curb or edge to edge) early morning and late evenings while there is minimal car and truck storage on the improved surfaces.
- While we are transitioning into the rainy season, no equipment shall be stored on unimproved areas, equipment (inclusive of wrecked trucks or other) stored for longer time periods (greater than 1 week) shall have all fluids drained and will be tarped.

#### *Medium Term*

- While some storage is placed in between tire and equipment buildings. The majority of equipment stored needs to be stored inside.
- Upon storage rack anchorage calculation approval by the City, storage racks to be moved inside and appropriately anchored.

#### *Long Term*

- While the majority of activities are contained indoors, the used oil tank remains outdoors, it is proposed to transition that above ground used oil storage tank indoors.

## Bay Area Concrete Recycling (BACR)

### Ultra Short Term

- Dust Control is critical, BACR air quality consultant identified to use Magnesium Chloride or Calcium Chloride while applying water on the unimproved roads.
- Installation of state-of-the-art mister units at each of the crushing equipment, to minimize fine dust being generated. This was suggested by Dustboss consultant reviewing the facility to minimize dust generated from equipment operating onsite.
- While the surface water run-off is designed to flow to the Slurry Facility. Optimize grading of the access roads to assure that is directed to the Slurry Facility.
- All trucks to be reviewed to make sure the tires are clean when they transition to the paved areas, potentially pressure washed at the wash rack and ensure they drive over the trackout grates.

### Medium Term

- A **25 ft wide concrete access road** with concrete ultrablocks (or approved similar) and 10ft wide bioswale will be installed alongside the entire northern portion of the site as future access to the site. This will be proposed as part of the site improvement plans to be submitted to the City of Hayward by end of November 2018.
- Installation of state of the art Dustboss DB-30 to control dust generated at the dumping area, which generates the majority of the dust at the facility.
- Prior to dumping, installation of overhead sprinkler unit to pre-wet the loads to minimize dust from being generated while dumping.

### Long Term

- Installation of improved surface for trucks to drive toward the dumping area, as well as exit towards the slurry facility. As proposed in the improvement plans generated by Civil Engineer for the site.
- Potential partial canopy over the crushing operations to minimize the generation of any windblown dust from the crushing operation.

## Slurry Solutions

### Ultra Short Term

- Minimal dust is being generated at the facility. No immediate action required.
- After review of topographic study, identify if entire facility is on improved surface (concrete) and graded to drain toward the appropriate slurry sump.
- Ensure that any potential slurry does not get tracked out, by immediate cleaning of the access ramp prior to tracking to occur once a truck leaves the access ramp.
- The partially completed **concrete curb** to delineate the materials on the southern side of the site will have the existing chainlink fence replaced to the original condition and the concrete block wall/curb completely finished/repared to the end of the parcel to the West. The concrete block wall/curb repairs on the southern side of the site will be completed by end of October.

### Medium Term

- Complete full, competent concrete block wall/curb along the southern boundary of the facility footprint.

### Long Term

- None forecast

Agreed by Economy Trucking Services Representative



Mike Mostipak  
Chief Operations Manager

Agreed by Slurry Solutions LLC



Kevin Oliveiro  
CEO

Agreed by Bay Area Concrete Representative



Kimberly Douglas  
Account Manager

Agreed by S&A Investment Holding LLC Representative

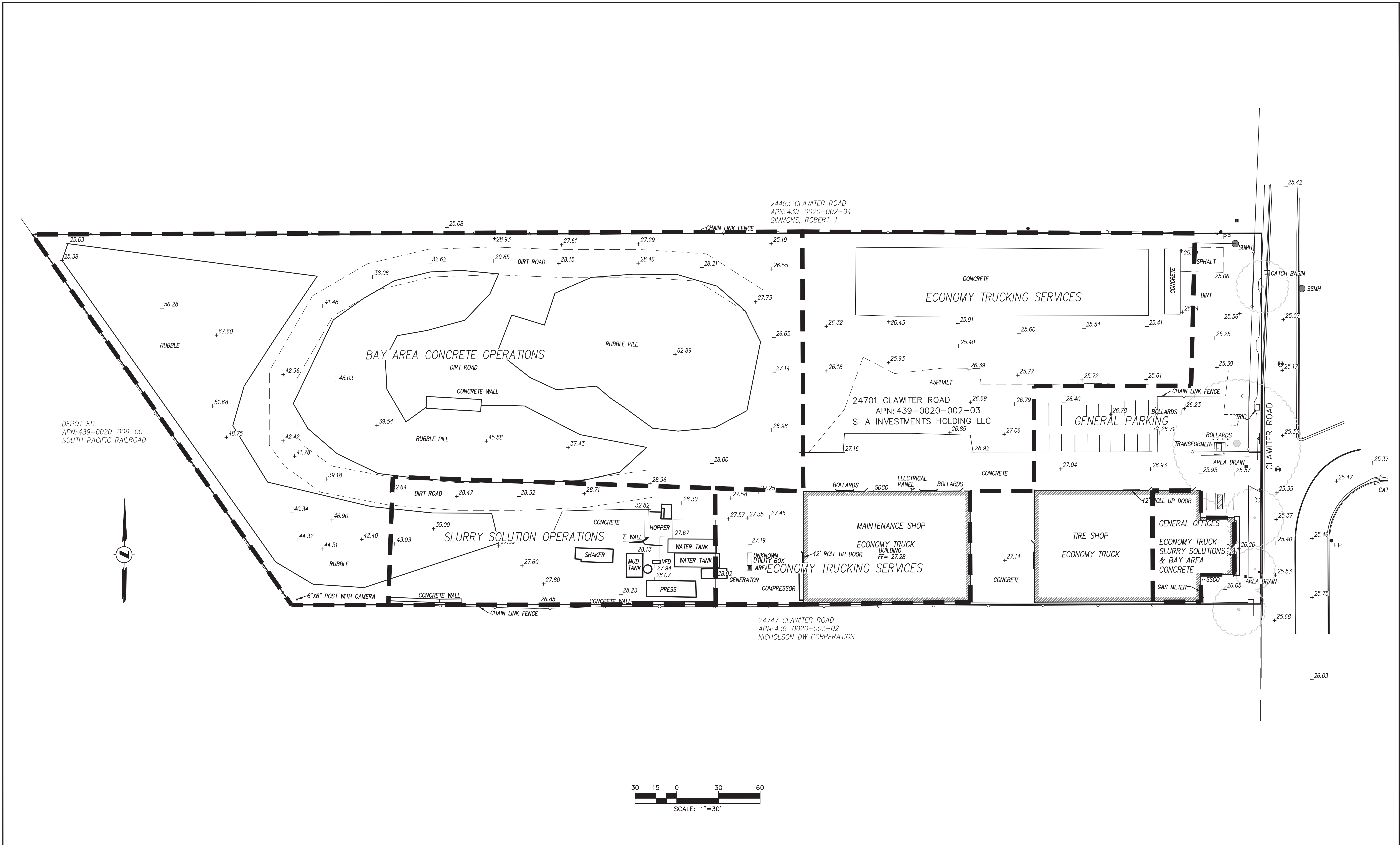


Carlos Pasos  
Director of Operations


## FIGURES



**TOPOGRAPHIC SITE MAP INCLUSIVE OF BUSINESS DELINEATIONS**



Planning  
Surveying & Mapping  
Land Development Engineering  
Municipal Engineering  
Construction Staking  
Environmental Engineering  
SWPPP Monitoring & Reporting



2655 Stanwell Drive, Suite 105  
Concord, CA 94520  
Phone: (925) 674-9082  
Fax: (925) 674-9279  
Web: [www.milaniassociates.com](http://www.milaniassociates.com)

24701 CLAWITER ROAD

**S&A INVESTMENTS**  
CONTEXTUAL SITE PLAN  
ALAMEDA COUNTY

HAYWARD


APN 439-20-2-3

CALIFORNIA

DESIGNED UNDER THE DIRECTION OF:

MICHAEL E. MILANI  
L.S. No. 5311 REGISTRATION EXPIRES 12/31/19

DESIGN:	JOB NO: 1268
DRAWN: BMW	DATE: OCTOBER 2018
CHECKED: MEM	SCALE: AS SHOWN



NO.	REVISIONS	BY	APP	DATE

SHEET	1
OF	1
SHEETS	1

## **ATTACHMENTS**

**ATTACHMENT A**  
**SLURRY SOLUTIONS BUSINESS LICENSE**



City of Hayward  
City of Hayward Revenue Division  
777 B STREET  
HAYWARD, CA 94541  
(510) 583-4600  
www.Hayward-CA.gov

# HAYWARD

3rd Street  
A 94541-5077  
TDD (510) 247-3340  
E DIVISION  
TAX FORM 1  
ward-ca.gov

This is your receipt when validated.

Valid from 5/28/15 through 12/31/15

Post until "Valid through" date.

## For Office Use Only

Tax # 1593

SIC Code

Renewal Period (A, Q, or O)

Business Type Code 99-G

Special District

Business Name Change ☐

Business Address Change ☐

Business Officer / Ownership Change ☐

COMPLETED IN ITS ENTIRETY

5/28/15

Solutions

7001

94545

Jo. ( )

Yes No X

? Yes No X

Please indicate below:

Revenue and Taxation Code.)

tion:

T-KAUR

Dr

94566

147

04557 05/28/2015 05:05PM

BUSINESS LICENSE  
WASTE SOLUTIONS

Item: 18754 104.00

104.00

104.00

104.00

104.00

0.00

WASTE SOLUTIONS

Office Hours:

Monday - Thursday 8:00 - 5:00

Friday 8:00 - 12:00 Noon

Thank you for your payment!

CUSTOMER COPY

5. Describe in detail the nature of the business to be conducted (i.e. manufacture and wholesale of appliances.): PROCESSING WATER PLOT.

Is the business: ☐ Retail ☐ Wholesale ☐ Commercial/Residential Rental  
☐ New Items ☐ Used Items ☐ Manufacturer  
☐ Office ☒ Service ☐ Storage/Warehouse (No sales)  
☐ Firearms ☐ Other (Specify)

6. If business is property rental:

• Number of units at location 0  
• Is there more than one address at this location? Yes No X  
• Do you own additional rental property in Hayward? Yes No X

7. Contractor License No. and Classification. (if licensed under provisions of the State Business Professions Code, Section 7033)

## AFFIDAVIT

I certify under penalty of perjury that information provided on this form is true and correct. I understand that payment of this tax, its acceptance by the City and the issuance of this Business Tax receipt does not entitle me or the business on behalf of which I have signed this affidavit to carry on any business unless that business complies with all applicable laws.

Executed on

5-28-15

at

Hayward CA

Signature

Print Name

Print Title

IMPORTANT INFORMATION ON THE REVERSE SIDE OF THE CUSTOMER COPY.  
PLEASE READ PRIOR TO SIGNING AFFIDAVIT.

CUSTOMER COPY-DO NOT DETACH

Zoning Dist.: 1

Initial: JAS

Date: 05/28/2015

Notes: PAI

Water not released to sewer storm drain

DIRT CONTAINERS

MAY 28 2015

CREDIT CARD

REVENUE OFFICE





# HAYWARD

3rd Street  
Hayward, CA 94541-5077  
(510) 583-4600 · TDD (510) 247-3340  
REVENUE DIVISION  
BUSINESS TAX FORM 1  
www.hayward-ca.gov

This is your receipt when validated.

Valid from 5/28/15 through 12/31/15

Post until "Valid through" date.

## For Office Use Only

Tax # 1593

SIC Code \_\_\_\_\_

Renewal Period (A, Q, or O) \_\_\_\_\_

Business Type Code 92-G

Special District \_\_\_\_\_

Business Name Change ☐

Business Address Change ☐

Business Officer / Ownership Change ☐

PLEASE TYPE OR PRINT WITH PEN - FORM MUST BE COMPLETED IN ITS ENTIRETY

1. Today's Date: 5 / 28 / 15  
Date Business Commenced in Hayward 5 / 28 / 15
2. Business Name & Location:  
Business Name Slurry Waste Solutions  
No. & Street 24701 Clamley Road  
City, State, Zip Hayward CA 94545  
Telephone No. (510) 294-0220 Fax No. ( )  
E-mail Address: Kimberly@baconcrete.net  
Is business a P.O. box/mail drop? Yes \_\_\_\_\_ No X  
Is this business conducted in/from a residence? Yes \_\_\_\_\_ No X  
If mailing address is different than above, please indicate below:  
Attn: \_\_\_\_\_  
Address: \_\_\_\_\_  
City, State, Zip \_\_\_\_\_

3.

(This information is required by Section 19286.8 of the Revenue and Taxation Code.)

4. Business Owner/Corporation President Information:  
☒ Owner/CEO or ☐ Partner Name: JEET KAUR

Home Address 109 Castlewood Dr  
City, State, Zip Pleasanton CA 94566  
Home Telephone No.: (925) 724-9047

5. Describe in detail the nature of the business to be conducted (i.e. manufacture and wholesale of appliances.): Processing water / dirt.

Is the business: ☐ Retail ☐ Wholesale ☐ Commercial/Residential Rental  
☐ New Items ☐ Used Items ☐ Manufacturer  
☐ Office ☒ Service ☐ Storage/Warehouse (No sales)  
☐ Firearms ☐ Other (Specify) \_\_\_\_\_

6. If business is property rental:
  - Number of units at location 0
  - Is there more than one address at this location? Yes \_\_\_\_\_ No X
  - Do you own additional rental property in Hayward? Yes \_\_\_\_\_ No X
7. Contractor License No. and Classification. (if licensed under provisions of the State Business Professions Code, Section 7033) \_\_\_\_\_

Zoning Dist.: 1

Initial: ash

Date: 05/29/2015

Notes: Water not released to sewer storm drain  
Dirt water containers

**PAY**  
MAY 29 2015

**CREDIT CARD**  
**REVENUE OFFICE**

## AFFIDAVIT

I certify under penalty of perjury that information provided on this form is true and correct. I understand that payment of this tax, its acceptance by the City and the issuance of this Business Tax receipt does not entitle me or the business on behalf of which I have signed this affidavit to carry on any business unless that business complies with all applicable laws.

Executed on 5/28/15 at Hayward CA  
(Date) (City and State)  
Signature \_\_\_\_\_ Print Name JEET KAUR Print Title President

IMPORTANT INFORMATION ON THE REVERSE SIDE OF THE CUSTOMER COPY.  
PLEASE READ PRIOR TO SIGNING AFFIDAVIT.  
CUSTOMER COPY-DO NOT DETACH

**MUNICIPAL LICENSE**  
**CITY OF HAYWARD, CALIFORNIA**

SLURRY WASTE SOLUTIONS  
24701 CLAWITER RD  
HAYWARD, CA 94545

IN CONFORMITY WITH THE HAYWARD MUNICIPAL CODE A

**BUSINESS LICENSE TAX RECEIPT**

IS HEREBY GRANTED TO:

**SLURRY WASTE SOLUTIONS**  
**24701 CLAWITER RD**  
**HAYWARD, CA 94545**  
**Expires: 12/31/2018**

This Tax Receipt is valid only at the above address for the listed period of time. Payment of this tax, its acceptance by the City, and the issuance of this Business Tax Receipt do not entitle the receipt holder to carry on any business unless that business complies with all applicable laws.

POST IN A CONSPICUOUS PLACE

Business ID: 1593  
Customer ID: 62099  
Category: SALES AND SERVICES

Under federal and state law, compliance with disability access laws is a serious and significant responsibility that applies to all California building owners and tenants with buildings open to the public. You may obtain information about your legal obligations and how to comply with disability access laws at the following agencies:

The Division of the State Architect at [www.dgs.ca.gov/dsa/Home.aspx](http://www.dgs.ca.gov/dsa/Home.aspx)  
The Department of Rehabilitation at [www.rehab.cahwnet.gov](http://www.rehab.cahwnet.gov)  
The California Commission on Disability Access at [www.cdda.ca.gov](http://www.cdda.ca.gov)



**MUNICIPAL LICENSE**  
**CITY OF HAYWARD, CALIFORNIA**

**SLURRY WASTE SOLUTIONS**

**24701 CLAWITER RD**  
**HAYWARD CA 94545**

**IN CONFORMITY WITH THE HAYWARD MUNICIPAL CODE A**

**BUSINESS LICENSE TAX RECEIPT**

**IS HEREBY GRANTED TO:**

**SLURRY WASTE SOLUTIONS**  
**24701 CLAWITER RD**  
**HAYWARD CA 94545**  
**Expires: 12/31/2017**

This Tax Receipt is valid only at the above address for the listed period of time. Payment of this tax, its acceptance by the City, and the issuance of this Business Tax Receipt do not entitle the receipt holder to carry on any business unless that business complies with all applicable laws.

**POST IN A CONSPICUOUS PLACE**

**Business ID: 1593**  
**Customer ID: 62099**  
**Category: SALES AND SERVICES**

Under federal and state law, compliance with disability access laws is a serious and significant responsibility that applies to all California building owners and tenants with buildings open to the public. You may obtain information about your legal obligations and how to comply with disability access laws at the following agencies:

The Division of the State Architect at [www.dgs.ca.gov/dsa/Home.aspx](http://www.dgs.ca.gov/dsa/Home.aspx)  
The Department of Rehabilitation at [www.rehab.cahwnet.gov](http://www.rehab.cahwnet.gov)  
The California Commission on Disability Access at [www.ccda.ca.gov](http://www.ccda.ca.gov)

**MUNICIPAL LICENSE**  
**CITY OF HAYWARD, CALIFORNIA**

SLURRY WASTE SOLUTIONS  
24701 CLAWITER RD  
HAYWARD CA 94545

RECEIVED DEC 12 2016

IN CONFORMITY WITH THE HAYWARD MUNICIPAL CODE A

**BUSINESS LICENSE TAX RECEIPT**

IS HEREBY GRANTED TO:

**SLURRY WASTE SOLUTIONS**  
**24701 CLAWITER RD**  
**HAYWARD CA 94545**  
**Expires: 12/31/2016**

This Tax Receipt is valid only at the above address for the listed period of time. Payment of this tax, its acceptance by the City, and the issuance of this Business Tax Receipt do not entitle the receipt holder to carry on any business unless that business complies with all applicable laws.

POST IN A CONSPICUOUS PLACE

Business ID: 1593  
Customer ID: 62099  
Category: SALES AND SERVICES

Under federal and state law, compliance with disability access laws is a serious and significant responsibility that applies to all California building owners and tenants with buildings open to the public. You may obtain information about your legal obligations and how to comply with disability access laws at the following agencies:

The Division of the State Architect at [www.dgs.ca.gov/dsa/Home.aspx](http://www.dgs.ca.gov/dsa/Home.aspx)  
The Department of Rehabilitation at [www.rehab.cahwnet.gov](http://www.rehab.cahwnet.gov)  
The California Commission on Disability Access at [www.cdda.ca.gov](http://www.cdda.ca.gov)

**MUNICIPAL LICENSE**  
**CITY OF HAYWARD, CALIFORNIA**

SLURRY WASTE SOLUTIONS  
24701 CLAWITER RD  
HAYWARD CA 94545

IN CONFORMITY WITH THE HAYWARD MUNICIPAL CODE A

**BUSINESS LICENSE TAX RECEIPT**

IS HEREBY GRANTED TO:

**SLURRY WASTE SOLUTIONS**  
**24701 CLAWITER RD**  
**HAYWARD CA 94545**  
**Expires: 12/31/2015**

This Tax Receipt is valid only at the above address for the listed period of time. Payment of this tax, its acceptance by the City, and the issuance of this Business Tax Receipt do not entitle the receipt holder to carry on any business unless that business complies with all applicable laws.

POST IN A CONSPICUOUS PLACE

Business ID: 1593  
Customer ID: 62099  
Category: SALES AND SERVICES

Under federal and state law, compliance with disability access laws is a serious and significant responsibility that applies to all California building owners and tenants with buildings open to the public. You may obtain information about your legal obligations and how to comply with disability access laws at the following agencies:

The Division of the State Architect at [www.dgs.ca.gov/dsa/Home.aspx](http://www.dgs.ca.gov/dsa/Home.aspx)  
The Department of Rehabilitation at [www.rehab.cahwnet.gov](http://www.rehab.cahwnet.gov)  
The California Commission on Disability Access at [www.ccda.ca.gov](http://www.ccda.ca.gov)

**APPENDIX B**  
**ECONOMY TRUCKING SERVICES BUSINESS LICENSE**

**MUNICIPAL LICENSE**  
**CITY OF HAYWARD, CALIFORNIA**

ECONOMY TRUCKING SERVICES INC

24701 CLAWITER RD  
HAYWARD, CA 94544

IN CONFORMITY WITH THE HAYWARD MUNICIPAL CODE A

**BUSINESS LICENSE TAX RECEIPT**

IS HEREBY GRANTED TO:

**ECONOMY TRUCKING SERVICES INC**  
**24701 CLAWITER RD**  
**HAYWARD, CA 94544**  
**Expires: 12/31/2018**

This Tax Receipt is valid only at the above address for the listed period of time. Payment of this tax, its acceptance by the City, and the issuance of this Business Tax Receipt do not entitle the receipt holder to carry on any business unless that business complies with all applicable laws.

POST IN A CONSPICUOUS PLACE

Business ID: 136642  
Customer ID: 210925  
Category: OTHER BUSINESS

Under federal and state law, compliance with disability access laws is a serious and significant responsibility that applies to all California building owners and tenants with buildings open to the public. You may obtain information about your legal obligations and how to comply with disability access laws at the following agencies:

The Division of the State Architect at [www.dgs.ca.gov/dsa/Home.aspx](http://www.dgs.ca.gov/dsa/Home.aspx)  
The Department of Rehabilitation at [www.rehab.cahwnet.gov](http://www.rehab.cahwnet.gov)  
The California Commission on Disability Access at [www.cdda.ca.gov](http://www.cdda.ca.gov)



**CITY OF HAYWARD**  
BUSINESS TAX RECEIPT  
777 B STREET • HAYWARD, CA 94541-5007

Payment of this tax, its acceptance by the city, and the issuance of this Business Tax Receipt does not entitle the receipt holder to carry on any business unless that business complies with all applicable laws.

**Tax ID #** 99-2 136542

**Type of Business** AUTO REPAIRS

**Business Name/Mailing Address**

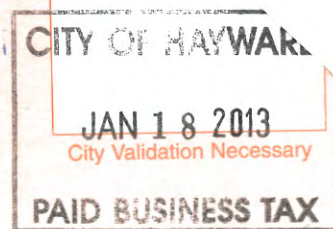
ECONOMY TRUCK REPAIR  
PO BOX 1603  
UNION CITY CA 94587

136542

**Valid through** 12/31/13

**Only At This Business Address**

24701 CLAWITER RD  
HAYWARD CA 94545



**Receipt Must Be Prominently Posted**