

CITY COUNCIL MEETING
TUESDAY, JANUARY 16, 2018

Presentations

ITEM 11—WS 18-001

East Bay Community Energy Program Overview



CITY COUNCIL UPDATE

PRESENTED BY: Nick Chaset

DATE: January 16, 2018

WHAT IS EAST BAY COMMUNITY ENERGY?



East Bay Community Energy (EBCE) is our new local power supplier committed to providing Alameda County with cleaner, greener electricity at lower rates. EBCE will reinvest earnings back into the community to create local green energy jobs, local programs, and clean power projects.

EBCE PARTICIPATING CITIES

- EBCE was formed by a Joint Powers Authority led by a Board of Directors composed of representatives from 11 participating cities and unincorporated areas in the County.
- As of January 2017, the following jurisdictions joined the EBCE JPA:

City of Albany
City of Berkeley
City of Dublin
City of Emeryville
City of Fremont
City of Hayward

City of Livermore
City of Oakland
City of Piedmont
City of San Leandro
City of Union City
County of Alameda

HOW WE'LL DO IT



SOURCE
EBCE



DELIVERY
PG&E



CUSTOMER
YOU

- EBCE sources electricity from cleaner energy sources.
- PG&E delivers the electricity, maintains the lines, and handles billing.
- You'll receive cleaner energy at lower rates without having to do a thing!

WHAT ARE MY OPTIONS?



Lower carbon

than PG&E

lower rates

than PG&E



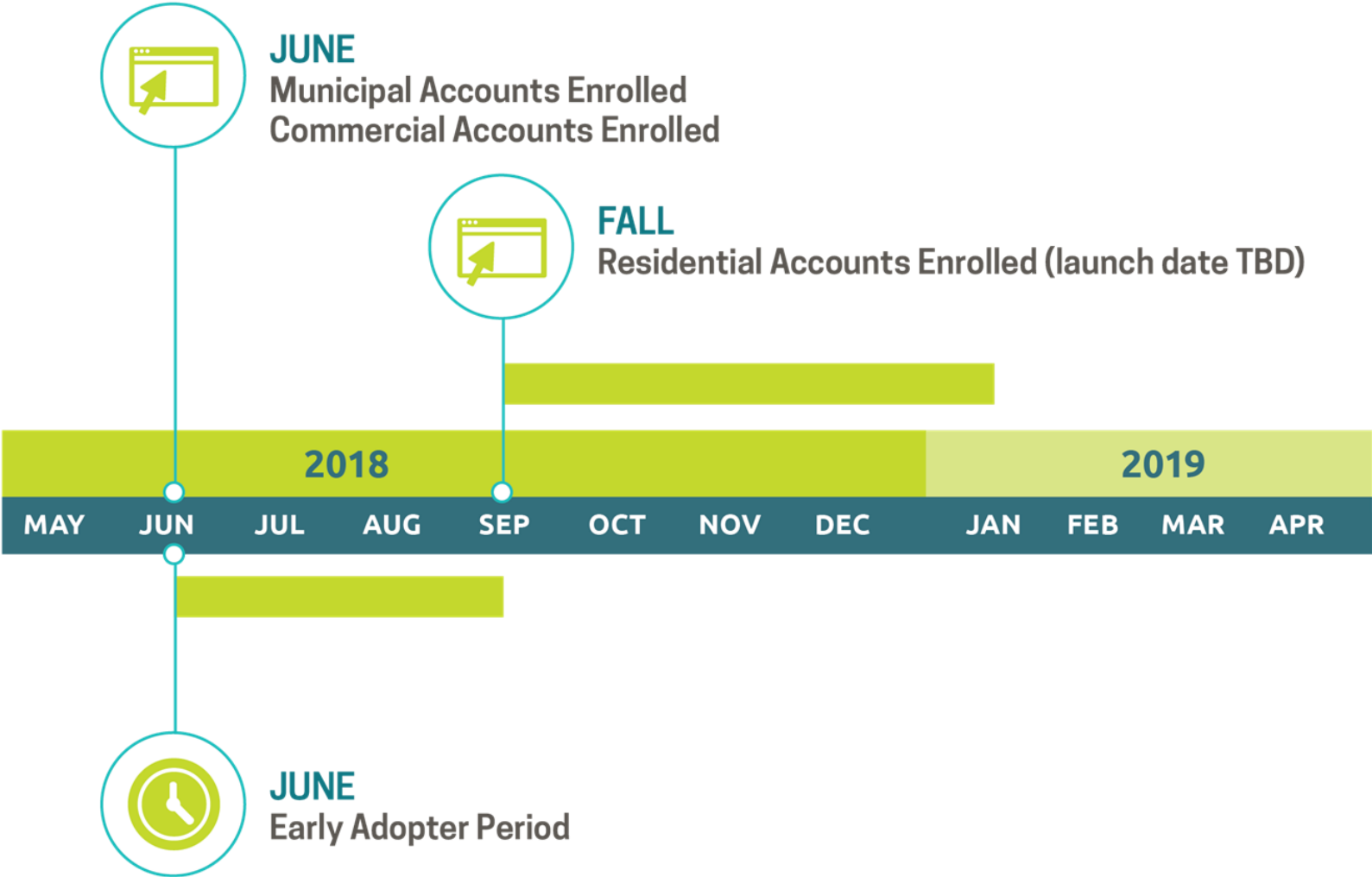
100%

clean energy

price premium

slightly higher rate

WHEN WILL EBCE SERVICE BEGIN?



LATEST EBCE UPDATES

- Implementation Plan certified by CPUC
- Core services put in place
 - Data & Billing Management
 - Banking and Credit Services
 - Wholesale Energy Services
- Building the Team
- Local Development Business Plan
 - Energy Cost analysis
 - Development of draft chapters
 - Comment period provided for public and stakeholders

WHAT'S NEXT

Program Implementation and Launch of Service

- Continue building the EBCE team
- Policy and program development
- Power procurement and rate setting
- Call center goes live
- Customer noticing
- Begin serving municipal, commercial and early adopter electric customers!



**Coming
June
2018!**



THANK YOU!

FOR MORE INFORMATION



EBCE.org



[/EastBayCommunityEnergy](https://www.facebook.com/EastBayCommunityEnergy)



[@PoweredbyEBCE](https://twitter.com/PoweredbyEBCE)



info@ebce.org

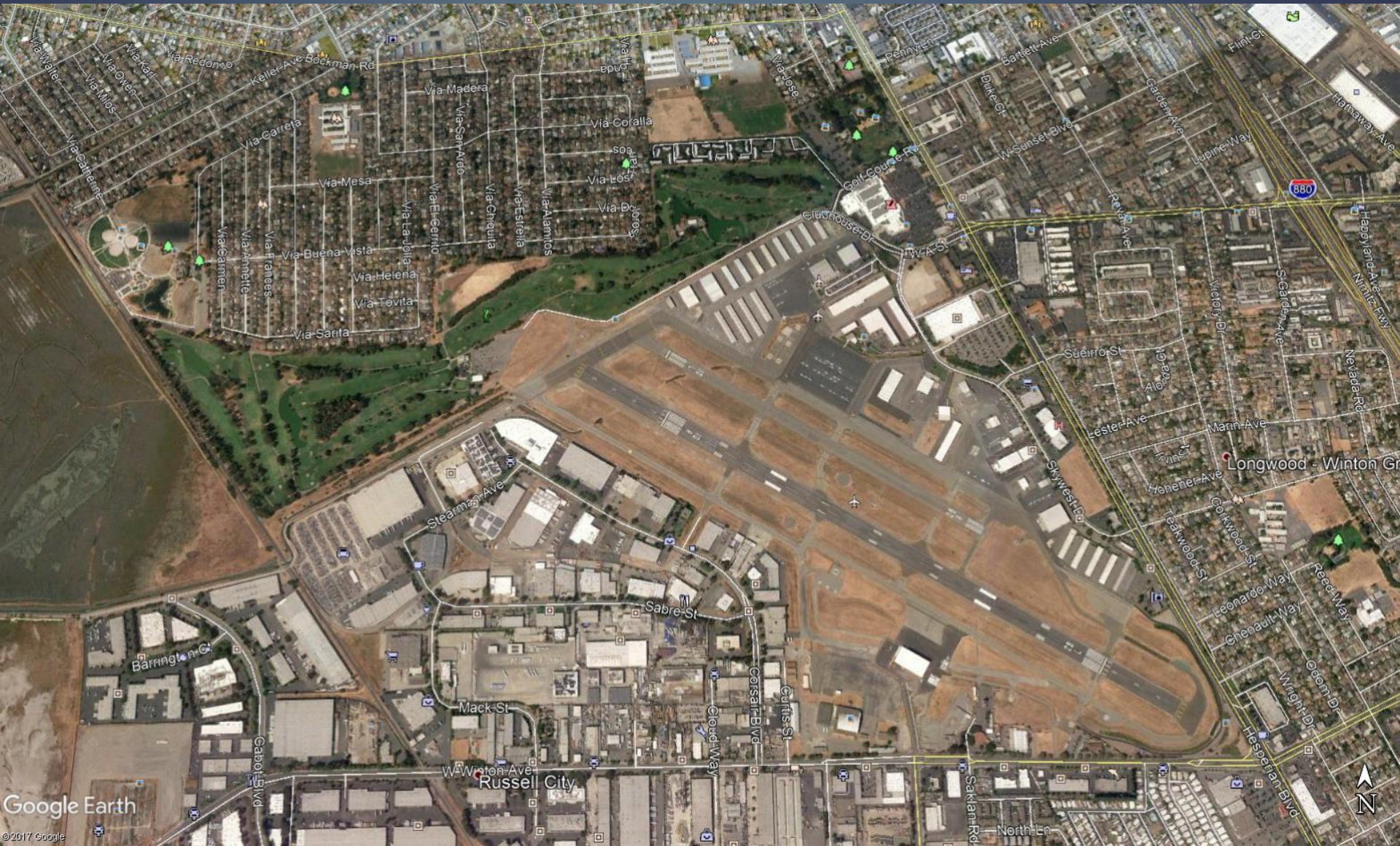
ITEM 12 – PH 18-002

**Proposed Amendments to Zoning Ordinance
To Amend Airport Terminal (AT) District
Regulations Related to Height**

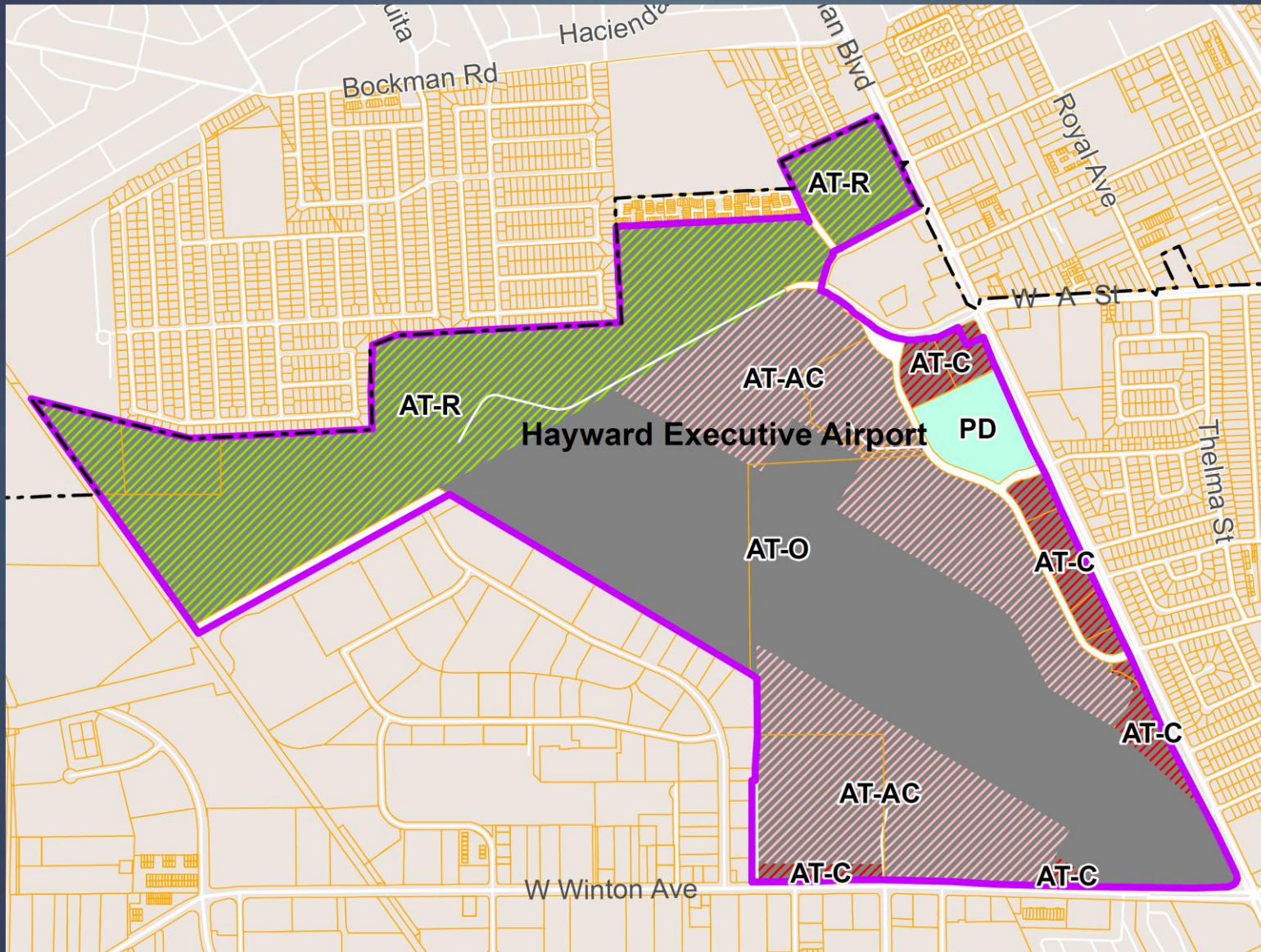


DEVELOPMENT SERVICES

Hayward Executive Airport



AT Sub-districts & Boundaries



Proposed Amendments



- Located within Hayward Executive Airport boundaries;
- Zoned Air (AT) Terminal District;
- Height Exception with Special Findings that:
 - The proposed structure will not constitute a hazard or result in an unsafe condition pursuant to FAA review; and
 - The increase in height is necessary to achieve a more beneficial site layout or will result in benefits or amenities that could not be achieved under the current regulations.

Staff Recommendation



City Council adopt the zoning text amendments related to height exceptions subject to special findings for properties located within the boundaries of the Hayward Executive Airport, as proposed.

Questions & Discussion

