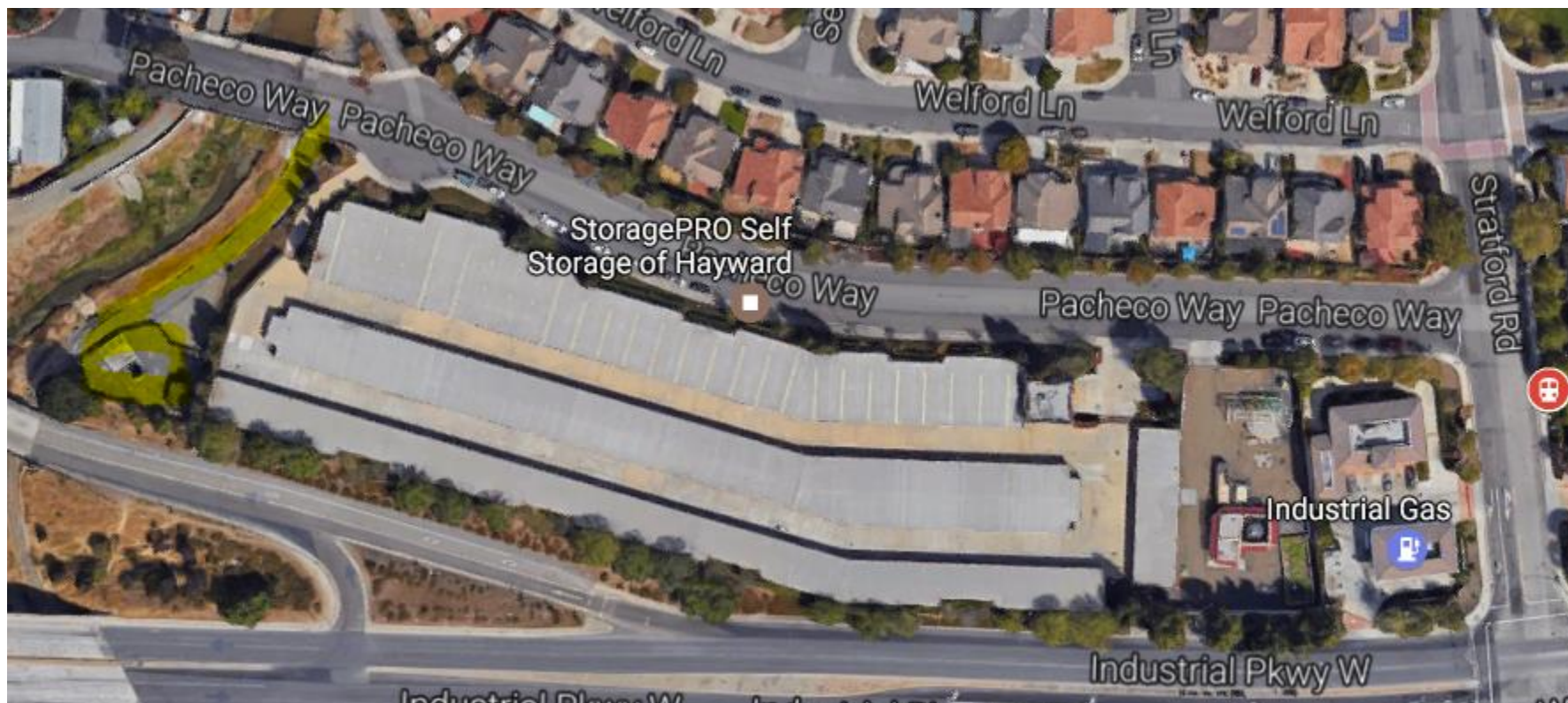


Maintenance District, Zone #1 - Stratford Village Lift Station

The following is a detailed description of the improvements that are being operated, maintained, and serviced throughout the benefit zone:

The operation and servicing of this facility includes, but is not limited to: personnel; electrical energy; materials, including diesel fuel and oil; hazardous materials clean up; and appurtenant facilities as required to provide sufficient run-off capacity. Maintenance means the furnishing of services and materials for the ordinary and usual operations, maintenance and servicing of the storm water lift station (SWLS); including repair, removal or replacement of all or part of any of the SWLS.



Capital Assets:

1	Pump #1 - 15 HP	5	Generator
2	Pump #2 - 15 HP	6	SCADA System
3	Pump #3 - 5 HP	7	Building roof
4	Pump #4 - 3 HP Dewatering	8	Asphalt surrency seal

Photos:

