

STEEL WAVE INDUSTRIAL PARK

2,580 INDUSTRIAL BLVD
HAYWARD, CA

WARE MALCOMB
Leading Design for Commercial Real Estate

Architect
Interior
Exterior
Site Engineering
4843 Chabot Ave., Suite 300
Pleasanton, CA 94588
P: (925) 244-9220
F: (925) 244-9221

DEVELOPER

STEELWAVE
STEELWAVE LLC
2500 MAIN STREET, SUITE 830
IRVINE, CA 92614
MICHAEL OLSON
PH: (925) 980-1999

GENERAL CONTRACTOR

TBD

OWNER'S CONSULTANTS

CIVIL ENGINEER/LAND SURVEYOR
WARE MALCOMB
4843 CHABOT DRIVE, SUITE 300
PLEASANTON, CA 94588
MICHAEL MURPHY
PH: (925) 244-9220
FAX: (925) 244-9221

GEOTECHNICAL ENGINEER
BERLOGAR GEOTECHNICAL CONSULTANTS
3097 SAND HOLLOW
PLEASANTON, CA 94588
STEVE TSANG
PH: (925) 844-0220
FAX: (925) 844-9615

ARCHITECT

WARE MALCOMB

4843 CHABOT DRIVE, SUITE 300
PLEASANTON, CA 94588
RENATA TILER
PH: (925) 244-9220
FAX: (925) 244-9221

EXTERIOR CONCEPTUAL IMAGE



SHEET INDEX

(SHEET 9 OF 17)

ARCHITECTURAL

(P - SHEETS)

- A01 TITLE SHEET
- A1.0 SITE PLAN
- A1.1 FLOOR PLAN
- A1.2 EXTENSION ELEVATIONS
- A1.3 PHOTOGRAPHIC PLAN
- A1.4 SITE DETAILS

CIVIL

(P - SHEETS)

- C1.0 TOPOGRAPHIC SURVEY
- C1.1 PRELIMINARY GRADING PLAN
- C1.2 PRELIMINARY UTILITY PLAN
- C1.3 PRELIMINARY STORMWATER MANAGEMENT PLAN
- C1.4 FIRE SUPPRESSION EXHIBIT
- C1.5 PEDESTRIAN AND VEHICULAR CIRCULATION PLAN
- C1.6 SOAK-PIT AND REFUSE COLLECTION TRUCK TURNING EXHIBIT CROSS SECTIONS

LANDSCAPE

(P - SHEETS)

- L-1 LANDSCAPE PLAN
- L-2 IRRIGATION PLAN

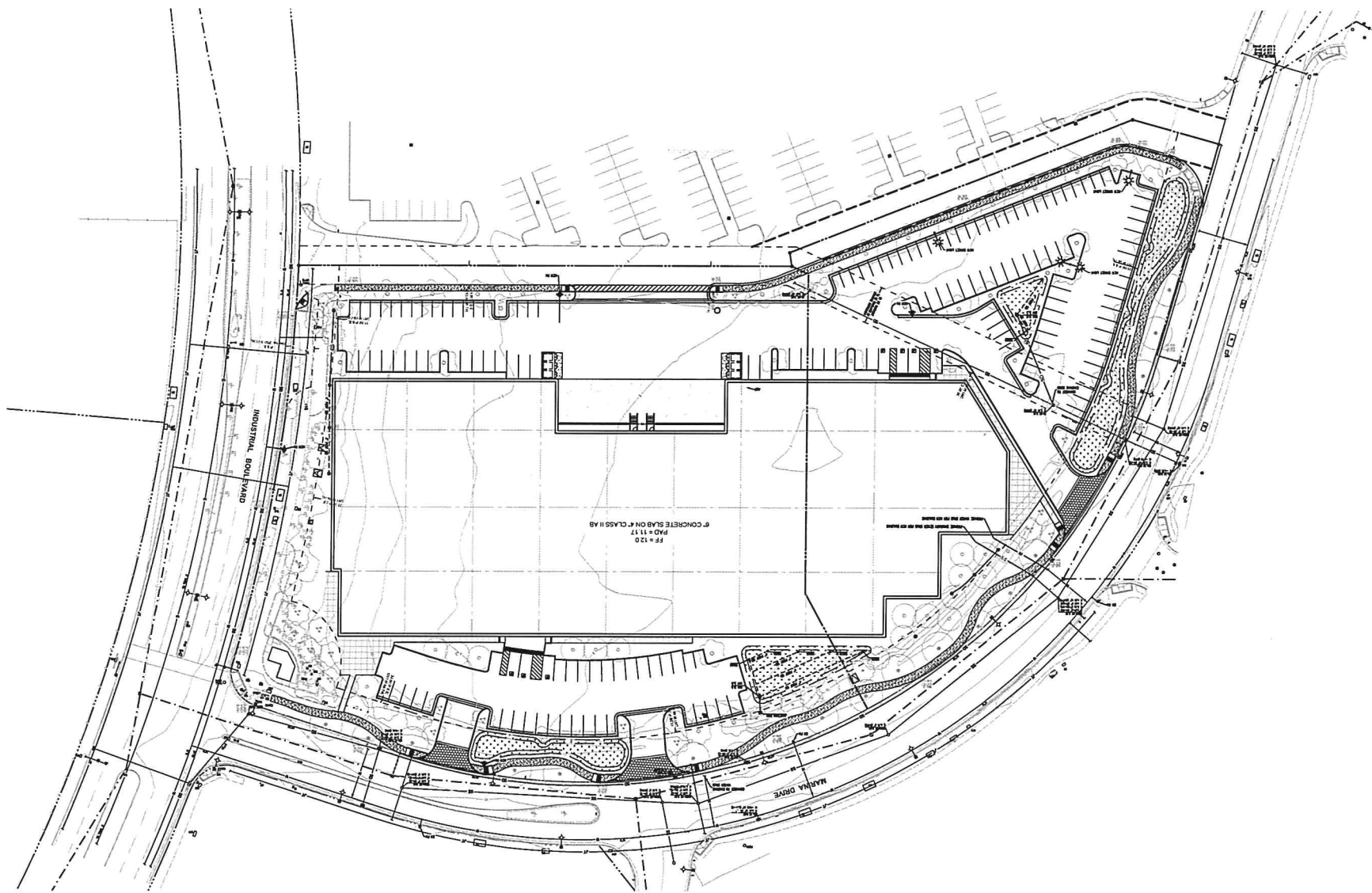
**STEELWAVE
INDUSTRIAL PARK**
INDUSTRIAL BLVD. & MARINA DRIVE
HAYWARD, CALIFORNIA

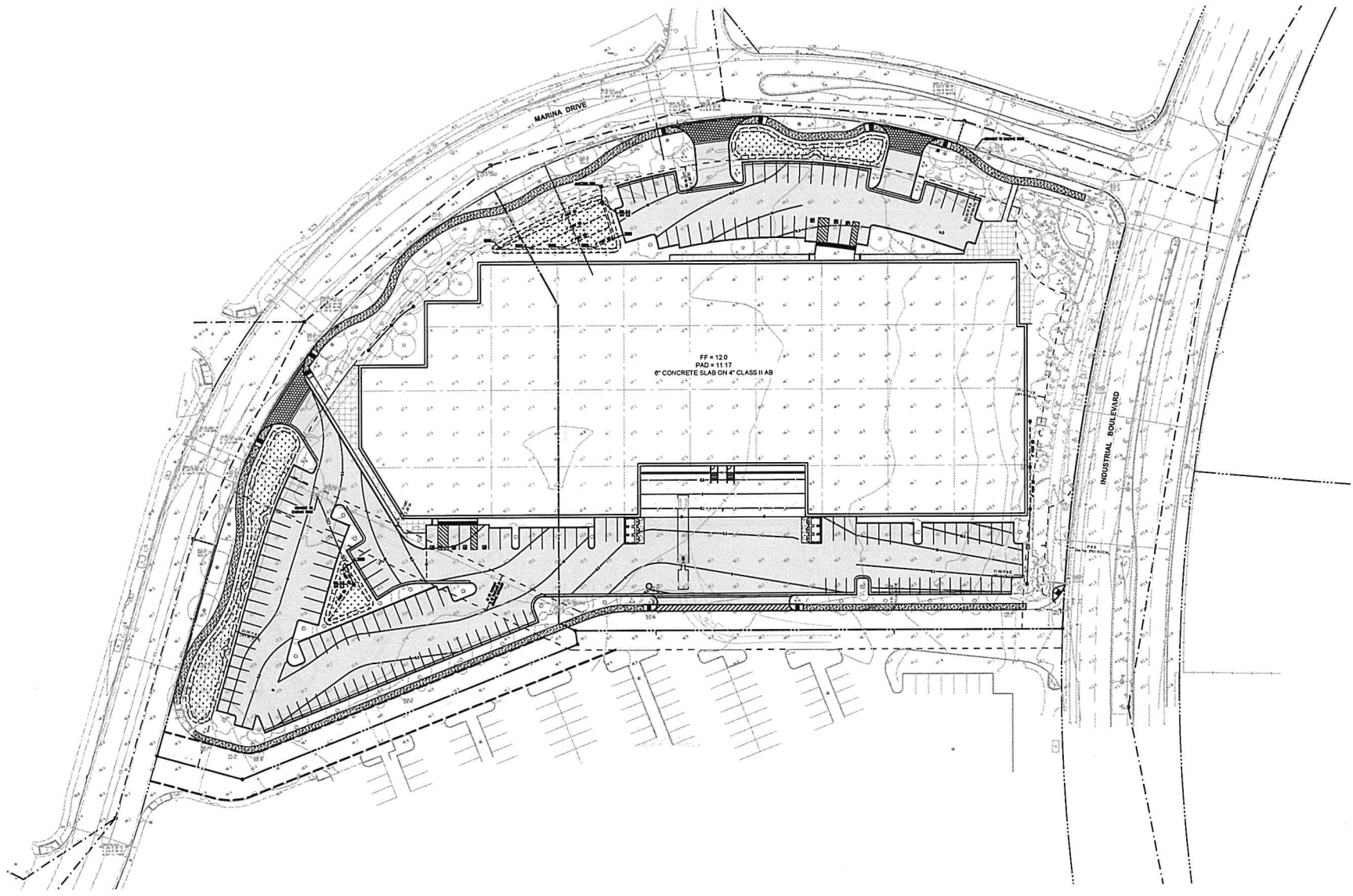
ARCHITECT'S CONSULTANTS

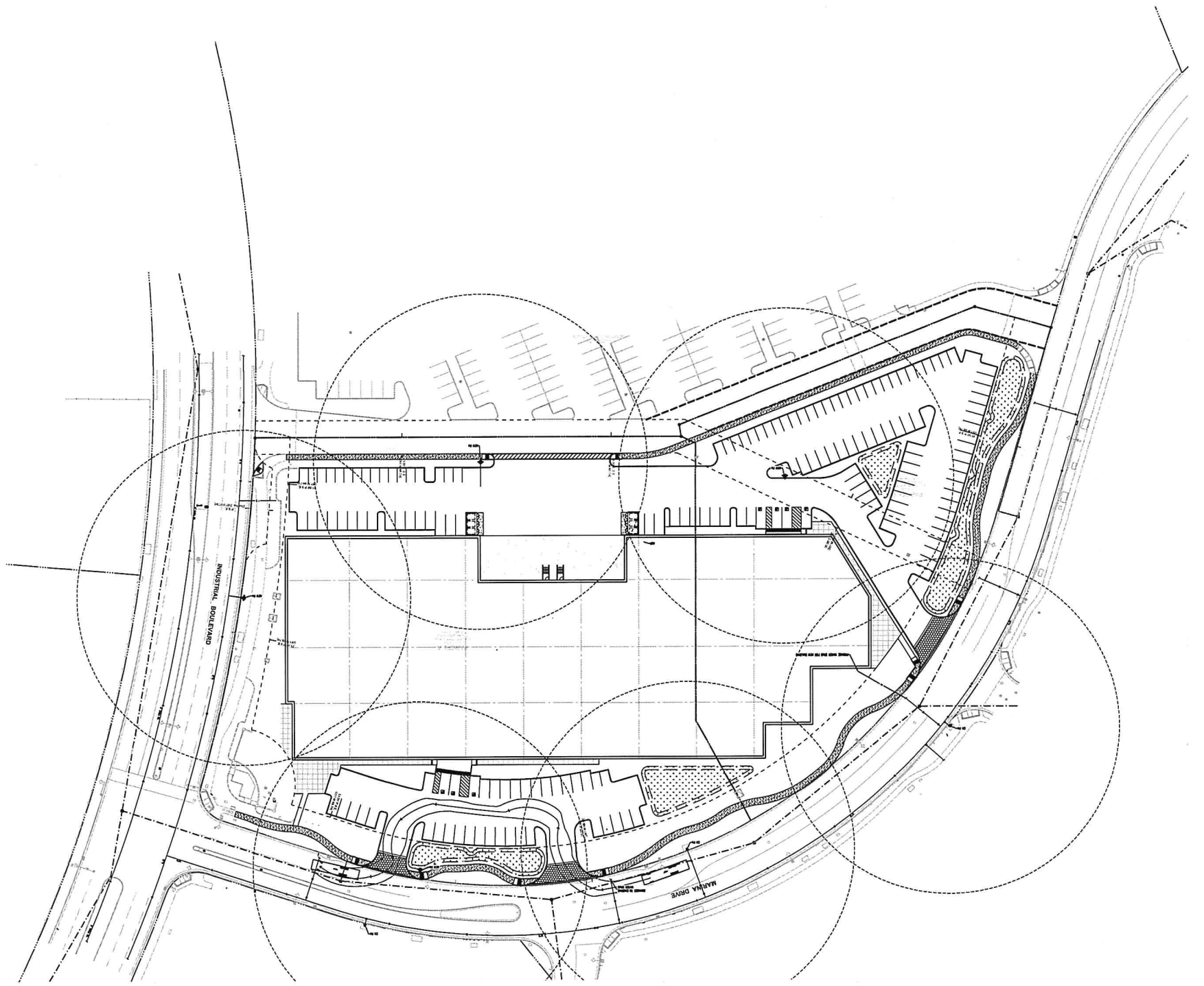
LANDSCAPE ARCHITECT
JMA
860 ATLANTIC AVENUE
ALAMEDA, CA 94501
JIM BISHMAN
PH: (510) 333-3954

ABBREVIATIONS

A	Asst	CONTR	Construction	F.A	Fire Alarm	LAB	Laboratory	PREST	Pre-stress	STA	Station
AC	Angle	CONF	Confidence	F.B	Flat Bar	LAR	Landscape	PLAS	Plastic Laminates	STD	Standard
AD	Adjustable	COR	Center of Round	F.D	Floor Drain	LAX	Landscape	PLMR	Plaster	STR	Strap
AG	Aggregate	CPDR	Center of Parallel	F.F	Fire Fighter	LDR	Leader	PLYM	Plywood	STR	Strap
AL	Aluminum	CTDR	Center of Turn	F.F.C	Fire Extinguisher Cabinet	LDR	Leader	PLYM	Plywood	STR	Strap
AM	Asphalt	CNTL	Control	F.F.C	Fire Extinguisher Cabinet	LDR	Leader	PLYM	Plywood	STR	Strap
AN	Anchor	CNTL	Control	F.F.C	Fire Extinguisher Cabinet	LDR	Leader	PLYM	Plywood	STR	Strap
AO	Asphalt	CNTL	Control	F.F.C	Fire Extinguisher Cabinet	LDR	Leader	PLYM	Plywood	STR	Strap
AP	Asphalt	CNTL	Control	F.F.C	Fire Extinguisher Cabinet	LDR	Leader	PLYM	Plywood	STR	Strap
ASPH	Asphalt	CNTL	Control	F.F.C	Fire Extinguisher Cabinet	LDR	Leader	PLYM	Plywood	STR	Strap
B	Beam	DB	Double	FR	Finish	PL	Plaster	PT	Point	STR	Strap
BA	Bearing	DET	Detail	FR	Finish	PL	Plaster	PT	Point	STR	Strap
BB	Block	DET	Detail	FR	Finish	PL	Plaster	PT	Point	STR	Strap
BC	Block	DET	Detail	FR	Finish	PL	Plaster	PT	Point	STR	Strap
BD	Block	DET	Detail	FR	Finish	PL	Plaster	PT	Point	STR	Strap
BE	Block	DET	Detail	FR	Finish	PL	Plaster	PT	Point	STR	Strap
BF	Block	DET	Detail	FR	Finish	PL	Plaster	PT	Point	STR	Strap
BG	Block	DET	Detail	FR	Finish	PL	Plaster	PT	Point	STR	Strap
BH	Block	DET	Detail	FR	Finish	PL	Plaster	PT	Point	STR	Strap
BI	Block	DET	Detail	FR	Finish	PL	Plaster	PT	Point	STR	Strap
BJ	Block	DET	Detail	FR	Finish	PL	Plaster	PT	Point	STR	Strap
BK	Block	DET	Detail	FR	Finish	PL	Plaster	PT	Point	STR	Strap
BL	Block	DET	Detail	FR	Finish	PL	Plaster	PT	Point	STR	Strap
BM	Block	DET	Detail	FR	Finish	PL	Plaster	PT	Point	STR	Strap
BN	Block	DET	Detail	FR	Finish	PL	Plaster	PT	Point	STR	Strap
BO	Block	DET	Detail	FR	Finish	PL	Plaster	PT	Point	STR	Strap
BP	Block	DET	Detail	FR	Finish	PL	Plaster	PT	Point	STR	Strap
BQ	Block	DET	Detail	FR	Finish	PL	Plaster	PT	Point	STR	Strap
BR	Block	DET	Detail	FR	Finish	PL	Plaster	PT	Point	STR	Strap
BS	Block	DET	Detail	FR	Finish	PL	Plaster	PT	Point	STR	Strap
BT	Block	DET	Detail	FR	Finish	PL	Plaster	PT	Point	STR	Strap
BU	Block	DET	Detail	FR	Finish	PL	Plaster	PT	Point	STR	Strap
BV	Block	DET	Detail	FR	Finish	PL	Plaster	PT	Point	STR	Strap
BW	Block	DET	Detail	FR	Finish	PL	Plaster	PT	Point	STR	Strap
BX	Block	DET	Detail	FR	Finish	PL	Plaster	PT	Point	STR	Strap
BY	Block	DET	Detail	FR	Finish	PL	Plaster	PT	Point	STR	Strap
BZ	Block	DET	Detail	FR	Finish	PL	Plaster	PT	Point	STR	Strap
CA	Case	DET	Detail	FR	Finish	PL	Plaster	PT	Point	STR	Strap
CB	Case	DET	Detail	FR	Finish	PL	Plaster	PT	Point	STR	Strap
CC	Case	DET	Detail	FR	Finish	PL	Plaster	PT	Point	STR	Strap
CD	Case	DET	Detail	FR	Finish	PL	Plaster	PT	Point	STR	Strap
CE	Case	DET	Detail	FR	Finish	PL	Plaster	PT	Point	STR	Strap
CF	Case	DET	Detail	FR	Finish	PL	Plaster	PT	Point	STR	Strap
CG	Case	DET	Detail	FR	Finish	PL	Plaster	PT	Point	STR	Strap
CH	Case	DET	Detail	FR	Finish	PL	Plaster	PT	Point	STR	Strap
CI	Case	DET	Detail	FR	Finish	PL	Plaster	PT	Point	STR	Strap
CJ	Case	DET	Detail	FR	Finish	PL	Plaster	PT	Point	STR	Strap
CK	Case	DET	Detail	FR	Finish	PL	Plaster	PT	Point	STR	Strap
CL	Case	DET	Detail	FR	Finish	PL	Plaster	PT	Point	STR	Strap
CM	Case	DET	Detail	FR	Finish	PL	Plaster	PT	Point	STR	Strap
CN	Case	DET	Detail	FR	Finish	PL	Plaster	PT	Point	STR	Strap
CO	Case	DET	Detail	FR	Finish	PL	Plaster	PT	Point	STR	Strap
CP	Case	DET	Detail	FR	Finish	PL	Plaster	PT	Point	STR	Strap
CQ	Case	DET	Detail	FR	Finish	PL	Plaster	PT	Point	STR	Strap
CR	Case	DET	Detail	FR	Finish	PL	Plaster	PT	Point	STR	Strap
CS	Case	DET	Detail	FR	Finish	PL	Plaster	PT	Point	STR	Strap
CT	Case	DET	Detail	FR	Finish	PL	Plaster	PT	Point	STR	Strap
CU	Case	DET	Detail	FR	Finish	PL	Plaster	PT	Point	STR	Strap
CV	Case	DET	Detail	FR	Finish	PL	Plaster	PT	Point	STR	Strap
CW	Case	DET	Detail	FR	Finish	PL	Plaster	PT	Point	STR	Strap
CX	Case	DET	Detail	FR	Finish	PL	Plaster	PT	Point	STR	Strap
CY	Case	DET	Detail	FR	Finish	PL	Plaster	PT	Point	STR	Strap
CZ	Case	DET	Detail	FR	Finish	PL	Plaster	PT	Point	STR	Strap
DA	Case	DET	Detail	FR	Finish	PL	Plaster	PT	Point	STR	Strap
DB	Case	DET	Detail	FR	Finish	PL	Plaster	PT	Point	STR	Strap
DC	Case	DET	Detail	FR	Finish	PL	Plaster	PT	Point	STR	Strap
DD	Case	DET	Detail	FR	Finish	PL	Plaster	PT	Point	STR	Strap
DE	Case	DET	Detail	FR	Finish	PL	Plaster	PT	Point	STR	Strap
DF	Case	DET	Detail	FR	Finish	PL	Plaster	PT	Point	STR	Strap
DG	Case	DET	Detail	FR	Finish	PL	Plaster	PT	Point	STR	Strap
DH	Case	DET	Detail	FR	Finish	PL	Plaster	PT	Point	STR	Strap
DI	Case	DET	Detail	FR	Finish	PL	Plaster	PT	Point	STR	Strap
DJ	Case	DET	Detail	FR	Finish	PL	Plaster	PT	Point	STR	Strap
DK	Case	DET	Detail	FR	Finish	PL	Plaster	PT	Point	STR	Strap
DL	Case	DET	Detail	FR	Finish	PL	Plaster	PT	Point	STR	Strap
DM	Case	DET	Detail	FR	Finish	PL	Plaster	PT	Point	STR	Strap
DN	Case	DET	Detail	FR	Finish	PL	Plaster	PT	Point	STR	Strap
DO	Case	DET	Detail	FR	Finish	PL	Plaster	PT	Point	STR	Strap
DP	Case	DET	Detail	FR	Finish	PL	Plaster	PT	Point	STR	Strap
DQ	Case	DET	Detail	FR	Finish	PL	Plaster	PT	Point	STR	Strap
DR	Case	DET	Detail	FR	Finish	PL	Plaster	PT	Point	STR	Strap
DS	Case	DET	Detail	FR	Finish	PL	Plaster	PT	Point	STR	Strap
DT	Case	DET	Detail	FR	Finish	PL	Plaster	PT	Point	STR	Strap
DU	Case	DET	Detail	FR	Finish	PL	Plaster	PT	Point	STR	Strap
DV	Case	DET	Detail	FR	Finish	PL	Plaster	PT	Point	STR	Strap
DW	Case	DET	Detail	FR	Finish	PL	Plaster	PT	Point	STR	Strap
DX	Case	DET	Detail	FR	Finish	PL	Plaster	PT	Point	STR	Strap
DY	Case	DET	Detail	FR	Finish	PL	Plaster	PT	Point	STR	Strap
DZ	Case	DET	Detail	FR	Finish	PL	Plaster	PT	Point	STR	Strap
EA	Case	DET	Detail	FR	Finish	PL	Plaster	PT	Point	STR	Strap
EB	Case	DET	Detail	FR	Finish	PL	Plaster	PT	Point	STR	Strap
EC	Case	DET	Detail	FR	Finish	PL	Plaster	PT	Point	STR	Strap
ED	Case	DET	Detail	FR	Finish	PL	Plaster	PT	Point	STR	Strap
EE	Case	DET	Detail	FR	Finish	PL	Plaster	PT	Point	STR	Strap
EF	Case	DET	Detail	FR	Finish	PL	Plaster	PT	Point	STR	Strap
EG	Case	DET	Detail	FR	Finish	PL	Plaster	PT	Point	STR	Strap
EH	Case	DET	Detail	FR	Finish	PL	Plaster	PT	Point	STR	Strap
EI	Case	DET	Detail	FR	Finish	PL	Plaster	PT	Point	STR	Strap
EJ	Case	DET	Detail	FR	Finish	PL	Plaster	PT	Point	STR	Strap
EK	Case	DET	Detail	FR	Finish	PL	Plaster	PT	Point	STR	Strap
EL	Case	DET	Detail	FR	Finish	PL	Plaster	PT	Point	STR	Strap
EM	Case	DET	Detail	FR	Finish	PL	Plaster	PT	Point	STR	Strap
EN	Case	DET	Detail	FR	Finish	PL	Plaster	PT	Point	STR	Strap
EO	Case	DET	Detail	FR	Finish	PL	Plaster	PT	Point	STR	Strap
EP	Case	DET	Detail	FR	Finish	PL	Plaster	PT	Point	STR	Strap
EQ	Case	DET	Detail	FR	Finish	PL	Plaster	PT	Point	STR	Strap
ER	Case	DET	Detail	FR	Finish	PL	Plaster	PT	Point	STR	Strap
ES	Case	DET	Detail	FR	Finish	PL	Plaster	PT	Point	STR	Strap
ET	Case	DET	Detail	FR	Finish	PL	Plaster	PT	Point	STR	Strap
EU	Case	DET	Detail	FR	Finish	PL	Plaster	PT	Point	STR	Strap
EV	Case	DET	Detail	FR	Finish	PL	Plaster	PT	Point	STR	Strap
EW	Case	DET	Detail	FR	Finish	PL	Plaster	PT	Point	STR	Strap
EX	Case	DET	Detail	FR	Finish	PL	Plaster	PT	Point	STR	Strap
EY	Case	DET	Detail	FR	Finish	PL	Plaster	PT	Point	STR	Strap
EZ	Case	DET	Detail	FR	Finish	PL	Plaster	PT	Point	STR	Strap
FA	Case	DET	Detail	FR	Finish	PL	Plaster	PT	Point	STR	Strap
FB	Case	DET	Detail	FR	Finish	PL	Plaster	PT	Point	STR	Strap
FC	Case	DET	Detail	FR	Finish	PL	Plaster	PT	Point	STR	Strap
FD	Case	DET	Detail	FR	Finish	PL	Plaster	PT	Point	STR	Strap
FE	Case	DET	Detail	FR	Finish	PL	Plaster	PT	Point	STR	Strap
FF	Case	DET	Detail	FR	Finish	PL	Plaster	PT	Point	STR	Strap
FG	Case	DET	Detail	FR	Finish	PL	Plaster	PT	Point	STR	Strap
FH	Case	DET	Detail	FR	Finish	PL	Plaster	PT	Point	STR	Strap
FI	Case	DET	Detail	FR	Finish	PL	Plaster	PT	Point	STR	Strap
FJ	Case	DET	Detail	FR	Finish	PL	Plaster	PT	Point	STR	Strap
FK	Case	DET	Detail	FR	Finish	PL	Plaster	PT	Point	STR	Strap
FL	Case	DET	Detail	FR	Finish	PL	Plaster	PT	Point	STR	Strap
FM	Case	DET	Detail	FR	Finish	PL	Plaster	PT	Point	STR	Strap
FN	Case	DET	Detail	FR	Finish	PL	Plaster	PT	Point	STR	Strap
FO	Case	DET	Detail	FR	Finish	PL	Plaster	PT	Point	STR	Strap
FP	Case	DET	Detail	FR	Finish	PL	Plaster	PT	Point	STR	Strap
FQ	Case	DET	Detail	FR							



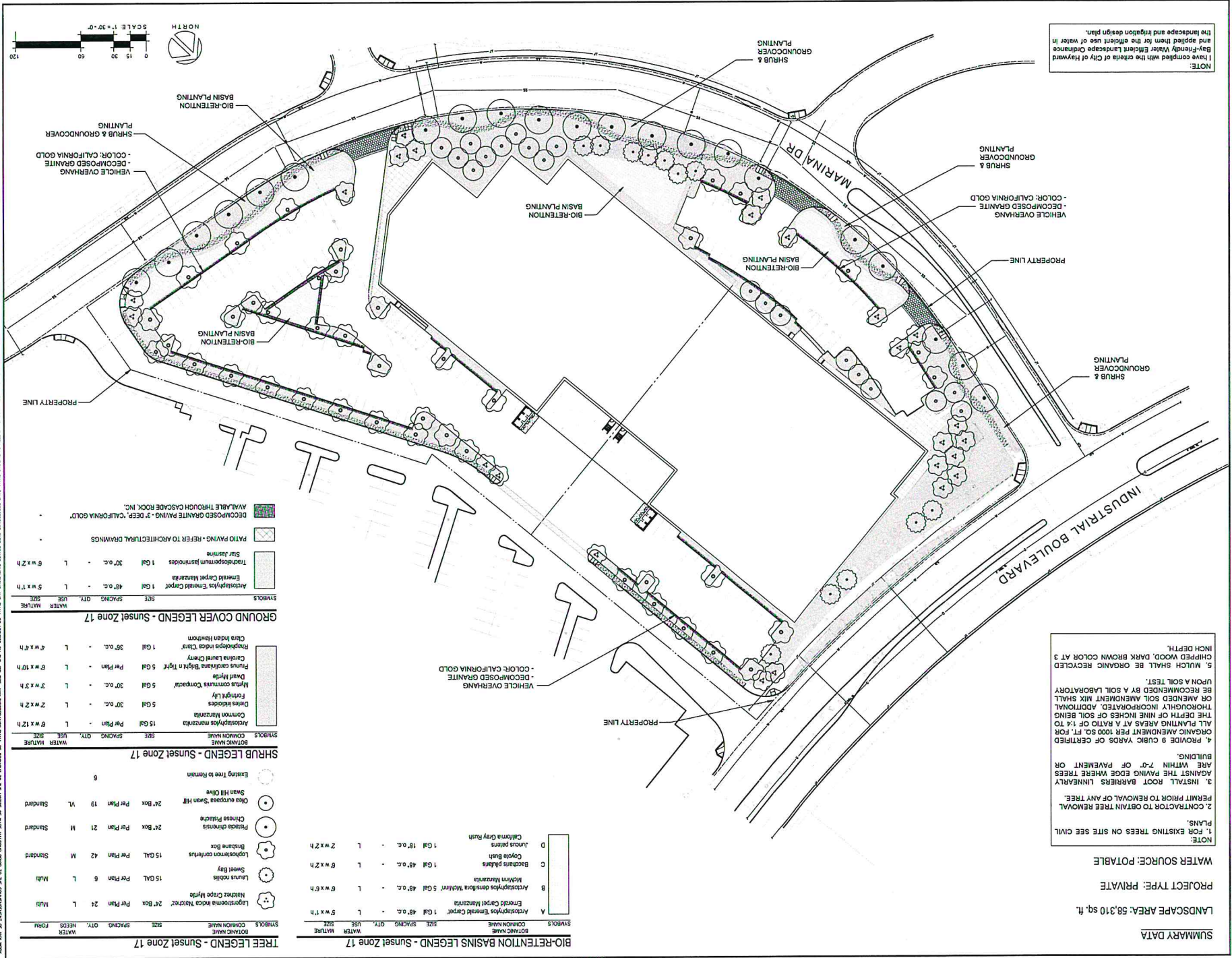




NOTE:
I have complied with the criteria of City of Hayward Bay-Friendly Water Efficient Landscape Ordinance and applied them for the efficient use of water in the landscape and irrigation design plan.

NOTE:
1. FOR EXISTING TREES ON SITE SEE CIVIL PLANS.
2. CONTRACTOR TO OBTAIN TREE REMOVAL PERMIT PRIOR TO REMOVAL OF ANY TREE.
3. INSTALL ROOT BARRIERS LINEARLY AGAINST THE PAVING EDGE WHERE TREES ARE WITHIN 7'-0" OF PAVEMENT OR BUILDING.
4. PROVIDE 9 CUBIC YARDS OF CERTIFIED ORGANIC AMENDMENT PER 100 SQ. FT. FOR ALL PLANTING AREAS AT A RATIO OF 14 TO THE DEPTH OF NINE INCHES OF SOIL BEING THOROUGHLY INCORPORATED. ADDITIONAL ON AMENDED SOIL AMENDMENT MIX SHALL BE RECOMMENDED BY A SOIL LABORATORY UPON A SOIL TEST.
5. MULCH SHALL BE ORGANIC RECYCLED CHIPPED WOOD. DARK BROWN COLOR AT 3 INCH DEPTH.

SUMMARY DATA
LANDSCAPE AREA: 58,310 sq. ft.
PROJECT TYPE: PRIVATE
WATER SOURCE: POTABLE



BIO-RETENTION BASINS LEGEND - Sunset Zone 17

SYMBOLS	COMMON NAME	SIZE	SPACING	QTY.	USE	WATER MATURE
A	Actinophyes Emerald Carpet	1 Gal	48" o.c.	-	L	5' x 1'h
B	Actinophyes densiflora 'Molitor'	5 Gal	48" o.c.	-	L	6' x 6'h
C	Baccharis palmata	1 Gal	48" o.c.	-	L	6' x 2'h
D	Callitriche Gray Bush	1 Gal	18" o.c.	-	L	2' x 2'h

TREE LEGEND - Sunset Zone 17

SYMBOLS	COMMON NAME	SIZE	SPACING	QTY.	USE	WATER MATURE
●	Lagerstroemia indica 'Newport'	24" Per Plan	24'	1	M	M
○	Laurus nobilis	15 Gal	Per Plan	6	L	M
○	Sweet Bay	15 Gal	Per Plan	42	M	Standard
○	Bradburia Box	24" Per Plan	21'	1	M	Standard
○	Chinese Parasol	24" Per Plan	19'	1	VI	Standard
○	Olea europaea 'Swan Hill'	24" Box	19'	1	VI	Standard
○	Olea indica 'Hawdon'	1 Gal	36" o.c.	-	L	4' x 4'h

GROUND COVER LEGEND - Sunset Zone 17

SYMBOLS	COMMON NAME	SIZE	SPACING	QTY.	USE	WATER MATURE
■	Actinophyes Emerald Carpet	1 Gal	48" o.c.	-	L	5' x 1'h
■	Tradescantia virginiana	1 Gal	30" o.c.	-	L	6' x 2'h
■	Styracis	1 Gal	30" o.c.	-	L	6' x 2'h

VEHICLE OVERHANG - DECOMPOSED GRANITE - COLOR: CALIFORNIA GOLD

AVAILABLE THROUGH CASCADE ROCK, INC.

PATIO PAVING - REFER TO ARCHITECTURAL DRAWINGS

REVISIONS

NO.	DATE	DESCRIPTION
1		
2		
3		
4		
5		
6		
7		
8		
9		
10		

STEELWAVE INDUSTRIAL PARK INDUSTRIAL BLVD. HAYWARD, CALIFORNIA

WARE MALCOMB
Landscape Design for Commercial Real Estate

ima
2001 Broadway
Hayward, CA 94541
415.333.3950
www.ima.com

Irrigation System Overview

Design Intent:
 Conserving water for irrigation in excessive amounts has become more expensive. The proposed project irrigation system will be designed to comply with the County's water efficiency ordinance adopted in 2010 as well as the Bay-Friendly Landscape Design Guidelines, adopted April 9, 2014.

Irrigation System Overview

The irrigation system will be supplied with EFM/DI domestic water from a new irrigation water meter at an existing point of connection. The water meter will operate a dedicated, reduced-pressure type backflow preventer to protect the domestic water system.
 The irrigation system will utilize a high efficiency irrigation system to induce a smart controller, drip irrigation and Pop-up Low Flow sprinklers. Trees will be irrigated on a bubler system for deep root watering.
 All irrigation systems on the site shall be designed to prevent runoff, overirrigation, low-head drainage and other similar conditions where water flows out of the designated landscape area.

IRRIGATION POINT OF CONNECTION
 IRRIGATION WATER METER
 IRRIGATION BACK FLOW PREVENTER

IRRIGATION LEGEND

- | SYMBOL | DESCRIPTION |
|--------|--|
| (---) | MAINLINE |
| (□) | IRRIGATION CONTROLLER |
| (●) | POINT OF CONNECTION. SEE CIVIL DRAWINGS FOR METER SIZING |
| (○) | IRRIGATION WATER METER. SEE CIVIL DRAWINGS |
| (⊠) | IRRIGATION BACK FLOW PREVENTER. SEE CIVIL DRAWINGS |

NOTE:
 1. ALL TREES ON SEPARATE BUBBLERS - ZONE 29
 2. TREES WITH DIFFERENT WATERING NEEDS TO BE ON SEPARATE VALVES.

City of Hayward

Water Efficient Landscape Worksheet
 Project Name: STEELWAVE INDUSTRIAL PARK
 Applicant: S&B ARCHITECTS
 Project Address: INDUSTRIAL BLVD., HAYWARD, CA
 Date: 02/20/15
 2251 Broadway, Suite 404, Oakland, CA 94612 | 510.353.3050
 s&barchitect.com
 Prepared For: CITY OF HAYWARD
 Worksheet Number: []
 Worksheet Title: []
 Worksheet Date: 02/20/15

FIRST THIRD - Existing Landscape Water Use

PP19 - EXISTING [] [] [] []

Landscape Zone	Area (sq ft)	Plant Factor (PF)	Irrigation Efficiency (IE)	EWSI (Gallons/Year)
1	5,138	0.2	0.85	13,079
2	1,276	0.2	0.85	3,425
3	4,642	0.2	0.85	13,079
4	1,416	0.2	0.85	3,645
5	3,278	0.2	0.85	8,476
6	1,648	0.2	0.85	4,384
7	3,194	0.2	0.85	8,198
8	700	0.2	0.85	1,850
9	406	0.2	0.85	1,067
10	419	0.2	0.85	1,099
11	1,265	0.2	0.85	3,325
12	359	0.2	0.85	949
13	469	0.2	0.85	1,229
14	1,028	0.2	0.85	2,694
15	4,071	0.2	0.85	10,619
16	1,369	0.2	0.85	3,583
17	729	0.2	0.85	1,894
18	616	0.2	0.85	1,601
19	5,716	0.2	0.85	14,890
20	4,692	0.2	0.85	12,278
21	1,613	0.2	0.85	4,247
22	3,211	0.2	0.85	8,378
23	2,747	0.2	0.85	7,171
24	663	0.2	0.85	1,737
25	2,054	0.2	0.85	5,349
26	461	0.2	0.85	1,213
27	2,074	0.2	0.85	5,412
28	782	0.2	0.85	2,041
29	1,062	0.2	0.85	2,811
Total Area				55,608
Total Gallons per Year				358,508

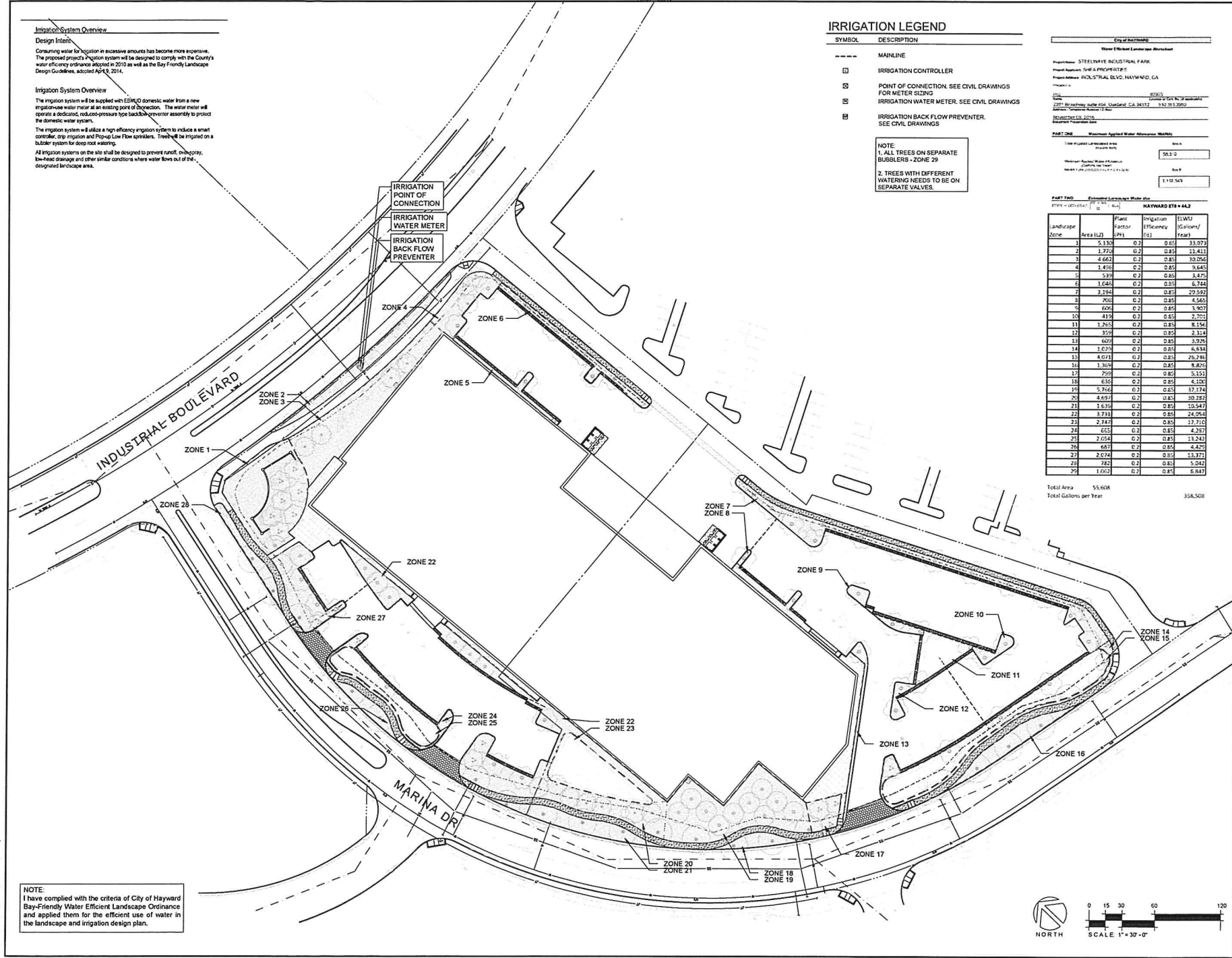
WARE MALCOMB
 Leading Design for Commercial Real Estate
 2001 Broadway, Suite 404
 Oakland, CA 94612
 510.353.3050
 www.waremalcomb.com

ima
 2201 Broadway, Suite 404
 Oakland, CA 94612
 510.353.3050
 www.imadesign.com

DATE	REVISION

PA/PM: _____
 DRAWN BY: _____
 JOB NO.: _____

SHEET
L-2



NOTE:
 I have complied with the criteria of City of Hayward Bay-Friendly Water Efficient Landscape Ordinance and applied them for the efficient use of water in the landscape and irrigation design plan.



THESE DRAWINGS AND SPECIFICATIONS ARE THE PROPERTY AND COPYRIGHT OF WARE MALCOMB AND SHALL NOT BE USED ON ANY OTHER WORK, EXCEPT BY AGREEMENT WITH WARE MALCOMB. WRITTEN CHANGES SHALL BE PRECEDED BY SEALED MEMORANDUMS AND SHALL BE FILED ON THE JOB SITE. ANY CORRECTIONS SHALL BE INDICATED TO THE NOTICE OF WARE MALCOMB PRIOR TO BE COMPLETED FOR ANY WORK.

D:\2014\10152\Work\Plans\Civil\Impmnt\L-2.dwg