

Work Session

Work Session Regarding the Feasibility of a Rental Registration System

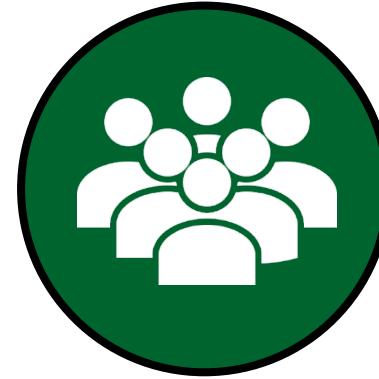
March 20, 2025 | HPRC

Ayush Patel, Management Analyst I

Christina Morales, Deputy Director of Development Services



LANDLORDS



TENANTS

RRS DATA COMPONENTS



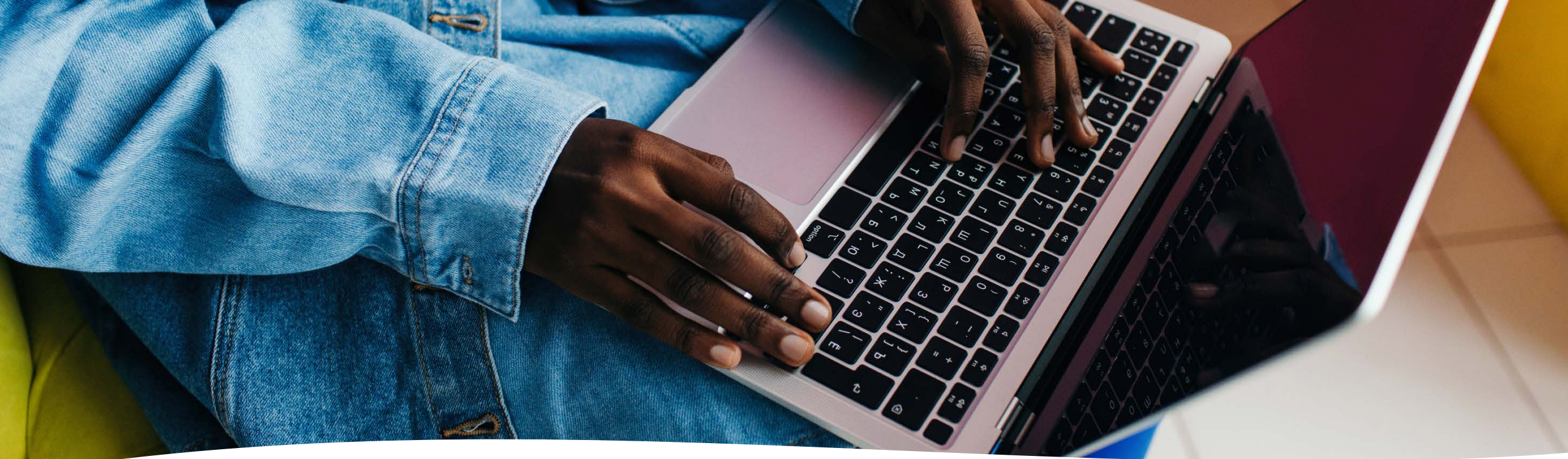
RENT



UNIT INFORMATION



FILING NOTICES



RRS BENEFITS

- Streamlined data collection
- Coverage of Hayward's entire rental market
- Proactive enforcement
- Increased transparency and communication
- Data driven policy-making

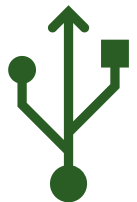
ADDITIONAL RRS CONSIDERATIONS



Tenant Personal Information




Vacancy Information & Rating System



Technology & Collaborative Partnership

PROPOSED ADDITIONAL FTEs (2.50)

0.5 FTE



Housing Division Manager

- Supervise Rent Review Staff
- Resolve sensitive matters
- Oversee implementation


1.0 FTE



Community Program Specialist

- Outreach & communication
- Facilitate workshops
- Provide technical assistance
- Process exemptions
- Monitor compliance, enforcement/collections

1.0 FTE



Senior Secretary

- Respond to inquiries
- Conduct data entry
- Maintain records
- Process payments

FEE ANALYSIS

Proposed Rent Review Fees for Hayward

RENT REVIEW FEES	CURRENT RATE	PROPOSED RATE
Covered Rental Units	\$66	\$140
Rental Units	\$32	\$90

Rent Review Fees for Neighboring Jurisdictions

CITY	RENT REGISTRY FEES	
	<i>Rent-Controlled Units</i>	<i>Unregulated Units</i>
City of Alameda	\$168	\$113
City of Berkeley	\$344	\$212
City of Mountain View	\$120	
City of Oakland	\$101	

DISCUSSION QUESTIONS



FUNDING & SUSTAINABILITY

Does the HPRC support continuing the development of an RRS with a clearer understanding of the costs associated with it?



DATA COLLECTION & TRANSPARENCY

Does the HPRC support the proposed data in Table 1 to be collected? If so, what, if any, of this information should be publicly accessible?



COMPLIANCE & ENFORCEMENT

Does the HPRC agree that enforcement of the fees and penalties through an assessment process?

QUESTIONS

