

**CITY COUNCIL MEETING  
TUESDAY, FEBRUARY 26, 2019**

**PRESENTATIONS**

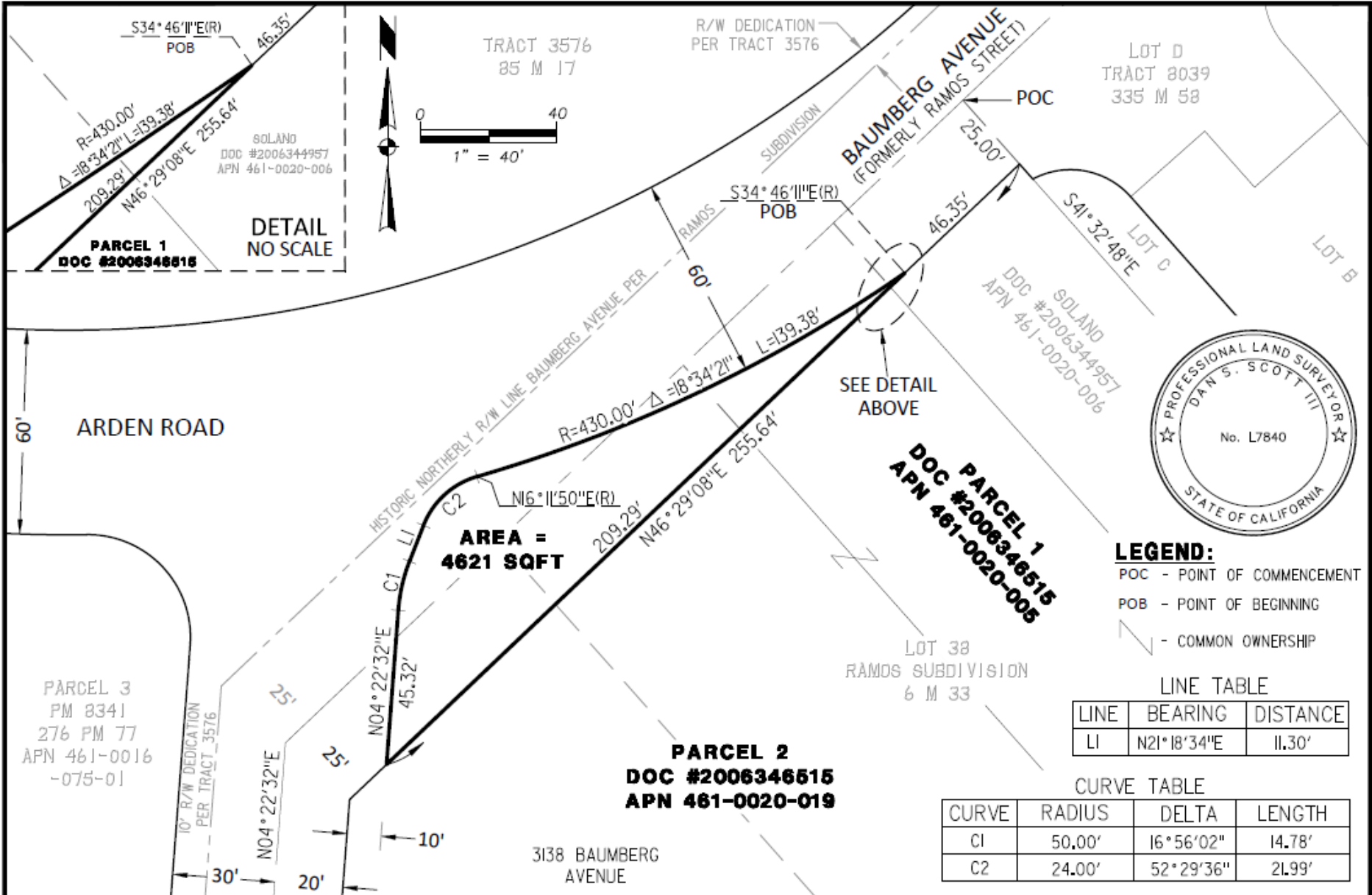
**ITEM 5 – PH 19-011**

**VACATION OF 3138 BAUMBERG AVENUE:  
PUBLIC HEARING AND RESOLUTION  
APPROVING EXCESS RIGHT-OF-WAY  
VACATION AND AUTHORIZING  
QUIT CLAIM DEED**

# Vacation of 3138 Baumberg Avenue

Public Hearing and  
Resolution Approving Excess Right-of-Way Vacation and  
Authorizing Quit Claim Deed

Alex Ameri  
Interim Director of Public Works

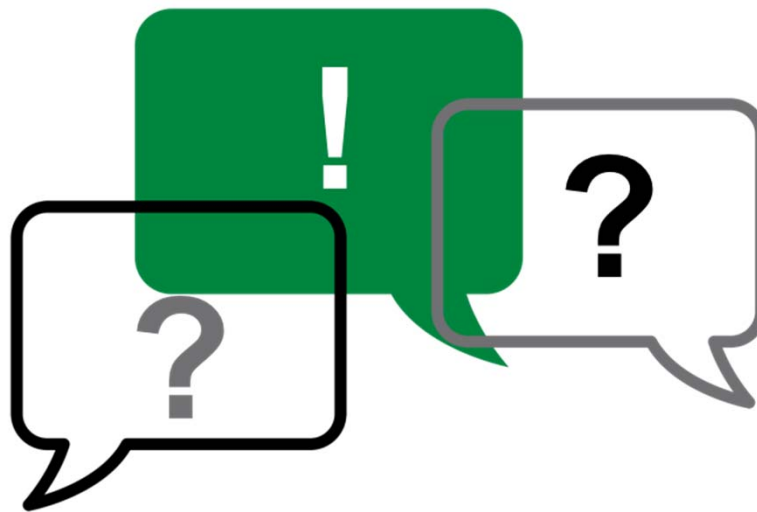


<b>CITY OF HAYWARD ENGINEERING DIVISION</b>			<b>EXHIBIT B</b>		DWG. NO. <b>18020</b>
			<b>PLAT TO ACCOMPANY LEGAL DESCRIPTION</b>		
DRAWN BY: DSS			DATE: JANUARY 2019		FILED
CHECKED BY: DSS			SCALE: 1" = 40'		
APPD. BY: DSS			APPROVED		
REV	DATE	BY	CITY SURVEYOR	DIR. PUBLIC WORKS	SHT. <b>1</b> OF <b>1</b>
			CITY OF HAYWARD ALAMEDA COUNTY CALIFORNIA		



Google

# Questions



**ITEM 6 – PH 19-012**

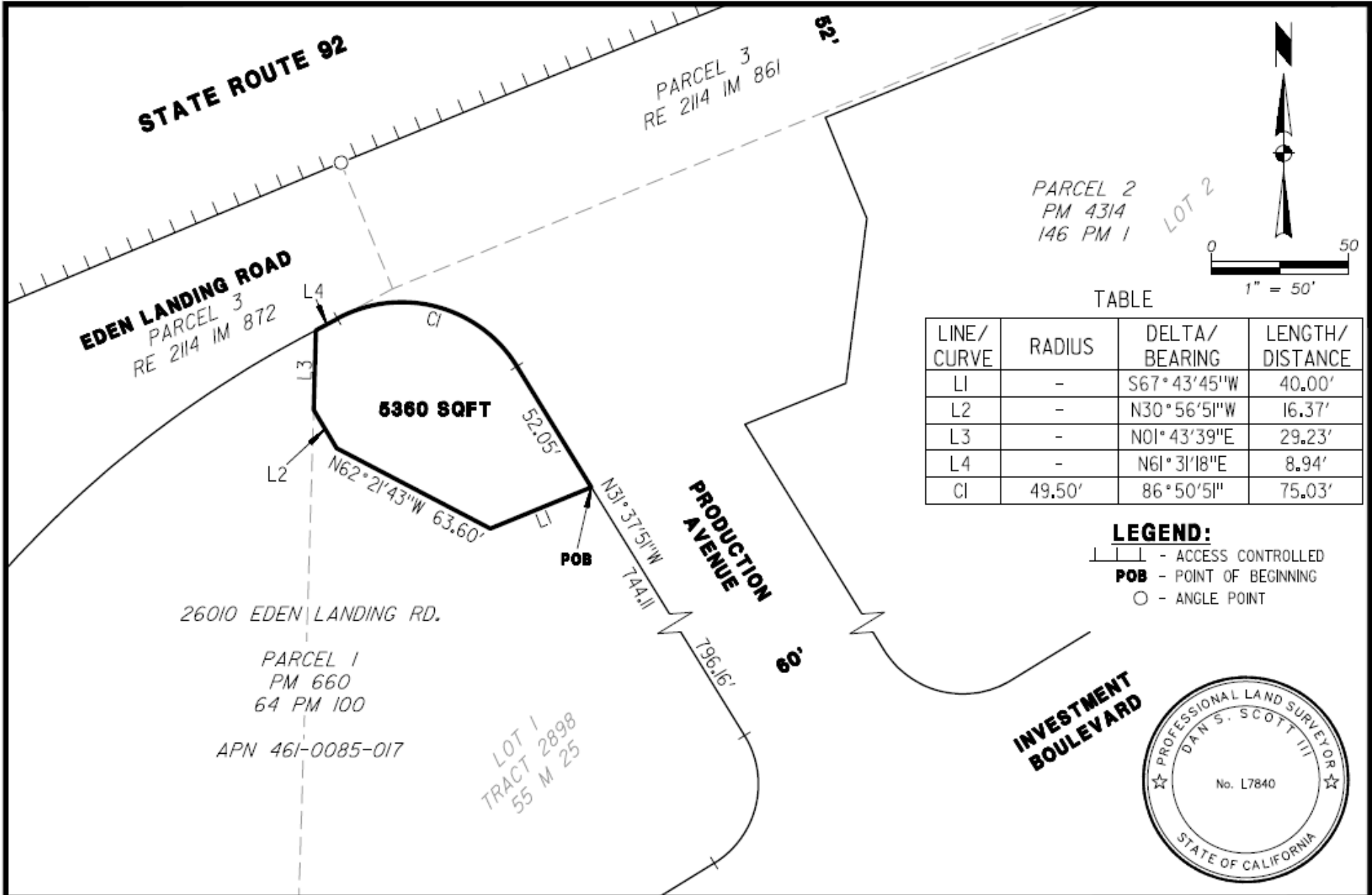
**VACATION OF 26010 PRODUCTION AVENUE:  
PUBLIC HEARING AND RESOLUTION  
APPROVING EXCESS RIGHT-OF-WAY  
VACATION AND AUTHORIZING  
QUIT CLAIM DEED**

# Vacation of 26010 Production Avenue

Public Hearing and  
Resolution Approving Excess Right-of-Way Vacation and  
Authorizing Quit Claim Deed

Alex Ameri  
Interim Director of Public Works





TABLE

LINE/ CURVE	RADIUS	DELTA/ BEARING	LENGTH/ DISTANCE
L1	-	S67° 43' 45" W	40.00'
L2	-	N30° 56' 51" W	16.37'
L3	-	N01° 43' 39" E	29.23'
L4	-	N61° 31' 18" E	8.94'
CI	49.50'	86° 50' 51"	75.03'

**LEGEND:**

- ACCESS CONTROLLED
- POB** - POINT OF BEGINNING
- ANGLE POINT



<b>CITY OF HAYWARD ENGINEERING DIVISION</b>			<b>EXHIBIT B PLAT TO ACCOMPANY LEGAL DESCRIPTION</b>			DWG. NO. <b>19003</b>	
DRAWN BY: DSS      DATE: JANUARY 2019			STREET VACATION PRODUCTION AVENUE			FILED	
CHECKED BY: DSS      SCALE: 1" = 50'			CITY OF HAYWARD      ALAMEDA COUNTY      CALIFORNIA			SHT. <b>1</b> OF <b>1</b>	
APPD. BY: DSS      APPROVED							
REV	DATE	BY	CITY SURVEYOR	DIR. PUBLIC WORKS			



# Questions

