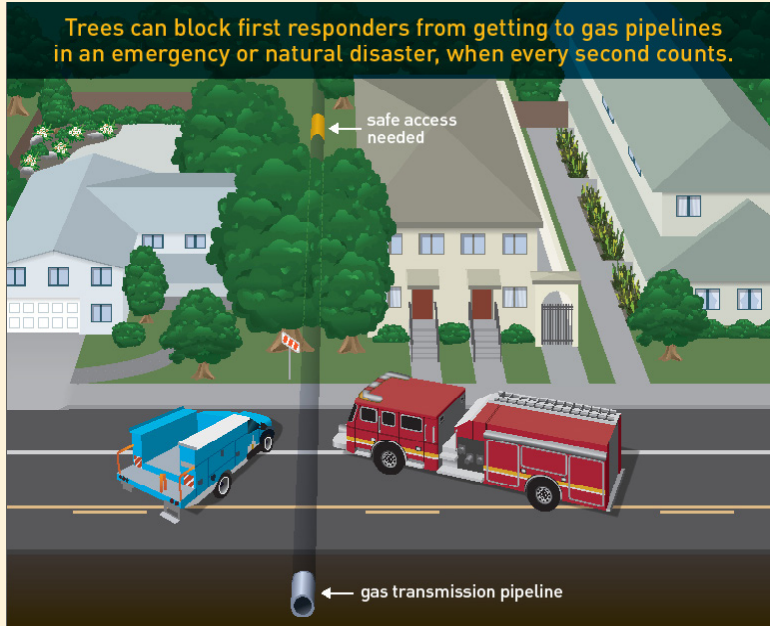




Community Pipeline Safety Initiative

24747 Clawiter Road Restoration Plan - Hayward, CA RW_V_122_13

About the Community Pipeline Safety Initiative

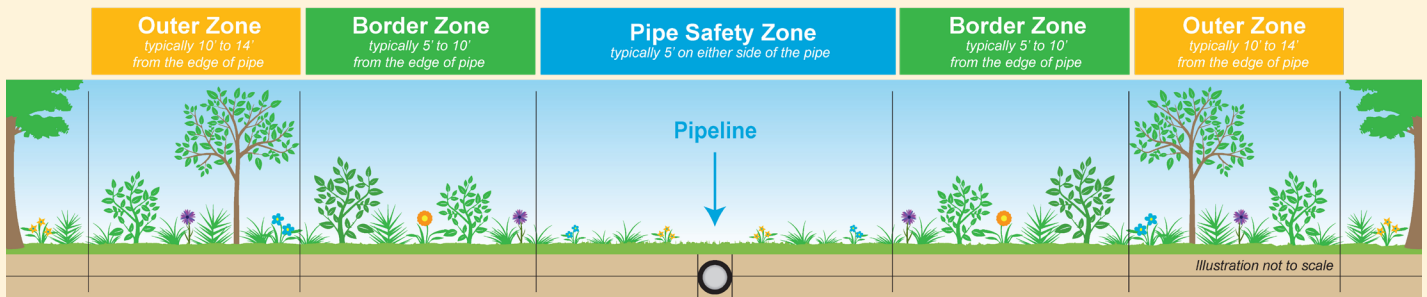


Pacific Gas and Electric Company's (PG&E) top priority is the safety of our customers and the communities we live in and serve. As part of this commitment to safety, we are checking the area above and around our natural gas transmission pipelines to help ensure firefighters and our safety crews are able to get to the pipe in case of an emergency or for important pipeline safety work.

In an emergency, every second counts and items like structures, trees and bushes located too close to gas pipelines can threaten safety because they can block first responders and emergency response crews from getting to the pipeline and making it safe. They can also prevent our crews from performing important safety and maintenance work, and tree roots can damage the underground pipeline, leading to corrosion and leaks.

Safe Landscaping Near Pipelines

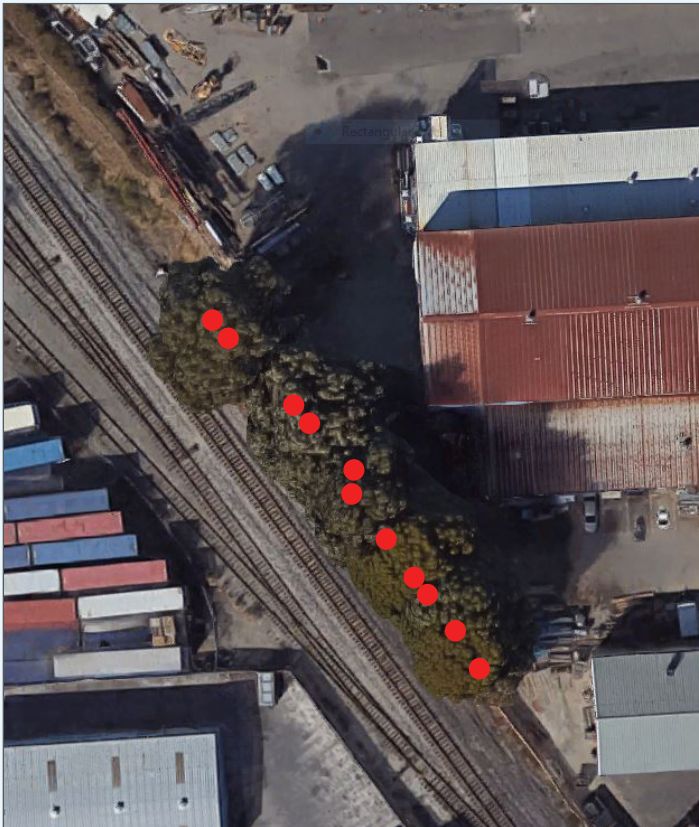
Making sure the right plants and trees are located in the right place adds to the safety and natural beauty of the community. When a tree or shrub needs to be replaced for safety reasons, we work with the property owner to offer a variety of landscaping options, including planting a new tree in a safe location. The following are some helpful guidelines for landscaping above and around the pipeline.



Pipe Zone	Lawns, flowers, low-profile grasses and low-growing herbaceous plants work well within the Pipe Safety Zone
Border Zone	Small to medium shrubs with a trunk or main branch less than 8" in diameter at full maturity work well within the Border Zone. Diameter is measured four and a half feet from the ground.
Outer Zone	Large shrubs and small trees with a trunk less than 36" at full maturity work well within the Outer Zone. Diameter is measured four and a half feet from the ground.

The following is a proposed restoration concept that works well near gas pipelines and can add to the safety and beauty of the area.

Tree Removal Plan



● Unacceptable risk trees to be removed.

Conceptual Restoration Plan



— 8 ft. tall wood fence

Proposed Visual Barrier

8 ft. tall wood fence

(please note this image reflects a general representation and is not the actual image of the proposed wood fence)



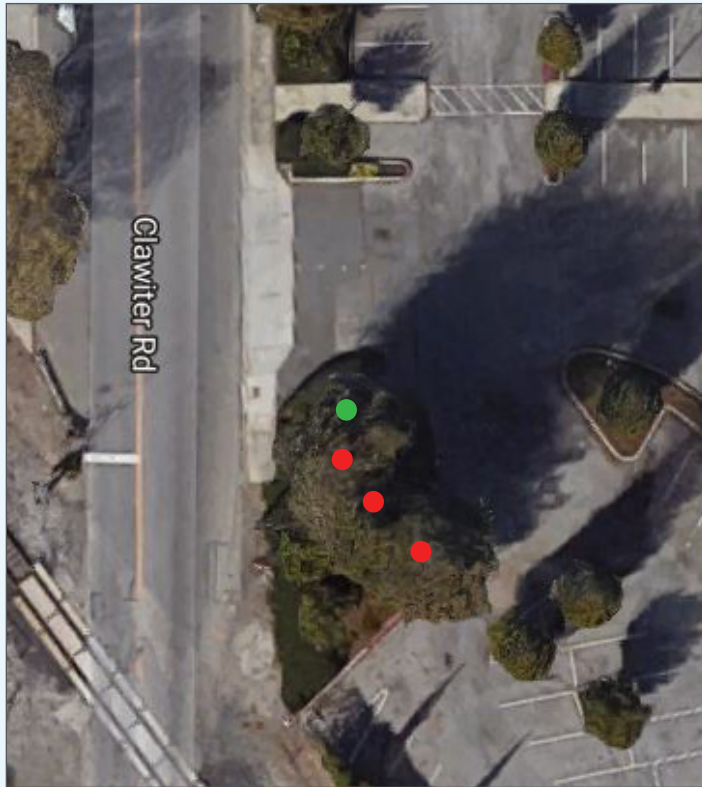
PG&E Critical Infrastructure Information. Facilities to be operated by PG&E personnel only. Pipeline and work area locations are approximate and for illustrative purposes only. Data subject to updates. Call 811 before you dig.

Location: Chiropractic School, Hayward, CA

(RW_V_124_13)

The following is a proposed restoration concept that works well near gas pipelines and can add to the safety and beauty of the area. Please note the proposed restoration represents the vegetation at full maturity.

Tree Removal Plan



- Unacceptable risk trees to be removed.
- Manageable risk tree to be removed per the City's request upon the approval of the property owner.

Conceptual Restoration Plan



- ★ Little Gem Dwarf Southern Magnolia
(*Magnolia grandiflora* 'Little Gem')

Proposed Tree

Little Gem Dwarf Southern Magnolia
(*Magnolia grandiflora* 'Little Gem')
Size: 15 gallon, standard tree form



PG&E Critical Infrastructure Information. Facilities to be operated by PG&E personnel only. Pipeline and work area locations are approximate and for illustrative purposes only. Data subject to updates. Call 811 before you dig.

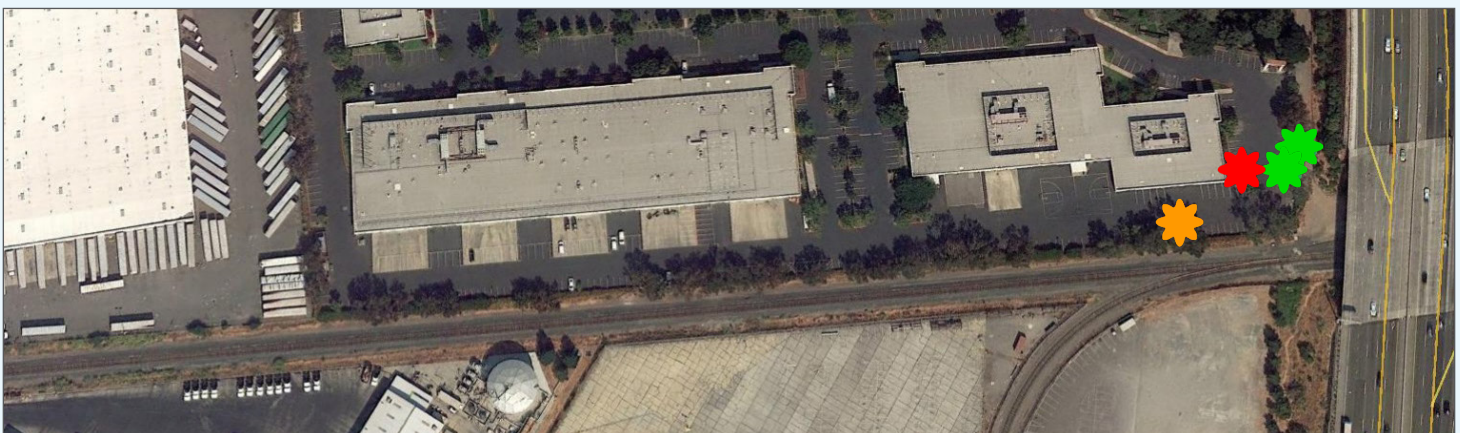
The following is a proposed restoration concept that works well near gas pipelines and can add to the safety and beauty of the area. Please note the proposed restoration represents the vegetation at full maturity.

Tree Removal Plan



● Unacceptable risk trees to be removed.

Conceptual Restoration Plan



★ Bloodgood London Plane Tree
(*Platanus x acerifolia* 'Bloodgood')

★ Krauter Vesuvius Purple Leaf Plum
(*Prunus cerasifera* 'Krauter Vesuvius')

★ Tuscarora Crape Myrtle
(*Lagerstroemia X* 'Tuscarora')

Proposed Trees



Bloodgood London Plane Tree
(*Platanus x acerifolia* 'Bloodgood')
Size: 15 gallon, standard tree form



Krauter Vesuvius Purple Leaf Plum
(*Prunus cerasifera* 'Krauter Vesuvius')
Size: 15 gallon, standard tree form



Tuscarora Crape Myrtle
(*Lagerstroemia X* 'Tuscarora')
Size: 15 gallon, standard tree form

PG&E Critical Infrastructure Information. Facilities to be operated by PG&E personnel only. Pipeline and work area locations are approximate and for illustrative purposes only. Data subject to updates. Call 811 before you dig.