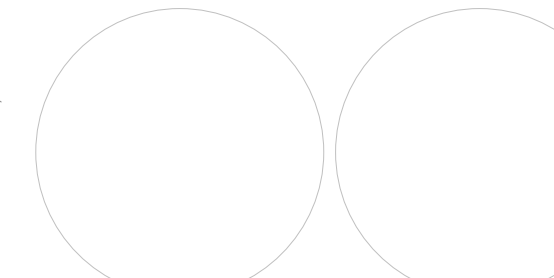




4750 Willow Road #250 Pleasanton, CA 94588 - T 925.648.8800
3099 Douglas Blvd Roseville, CA 95661 - T 916.772.1800
3050 Pullman Street Costa Mesa, CA 92626 - T 714.338.1600

CONSULTANT:

PROFESSIONAL STAMP:



AGENCY APPROVAL:

ITEM:	REVISION/ISSUE:	DATE:
A	PLANNING SUBMITTAL	01/27/20
B	PLANNING RESUBMITTAL	04/24/20

KEY PLAN:

Owner

U-HAUL COMPANY OF EAST BAY

4150 POINT EDEN WAY

SITE PLAN

DRAWN BY: RS CHECKED BY: RFT
DATE: 01/18/2021 PROJECT NO: U2301
SHEET NO:

A-100

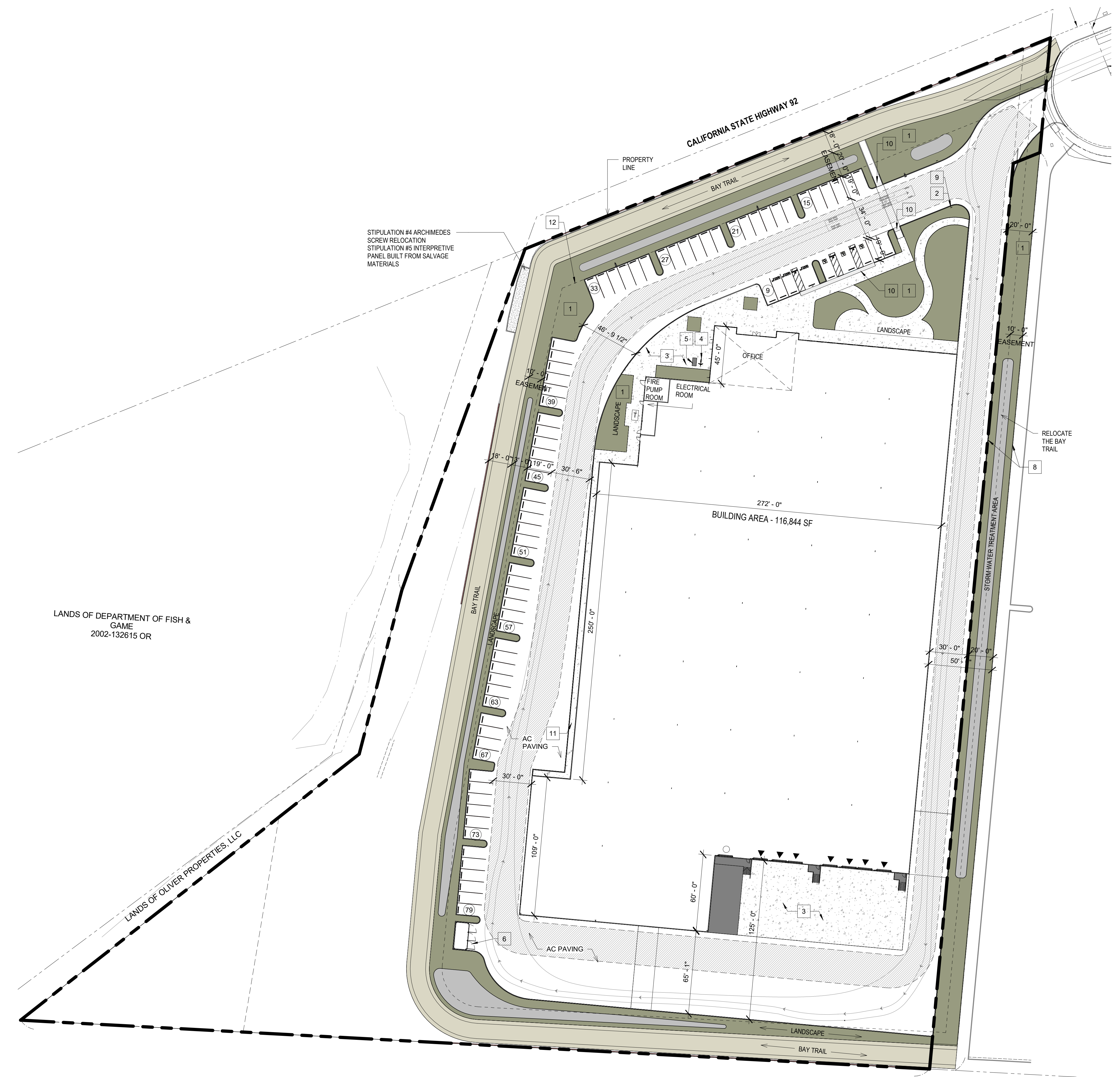
PROJECT DATA

ZONING:	IP- INDUSTRIAL PARK
APN:	461-0085-020-02
NORTH SITE AREA GROSS:	6.83 AC 297,762 SF 8,743 SF 0 SF
DETECTION:	@3.4%
SLOPE:	
EASEMENTS:	
LANDSCAPE:	@16% 45,840 SF
NET:	5.58 AC 243,179 SF
BUILDING FOOTPRINT:	116,844 SF
NORTH BUILDING USE:	WAREHOUSE 114,059 SF OFFICE 2,785 SF
COVERAGE:	GROSS: 38% NET: 47%
PARKING REQUIRED:	WAREHOUSE 1/2000_SF 58 STALLS OFFICE 1/250_SF 11 STALLS TOTAL 69 STALLS
PARKING PROVIDED:	AUTO 79 STALLS REQ. ACCESSIBLE 2 STALLS REQ. EV 2 STALLS BIKE STALL 2 STALLS BIKE LOCKER 2 STALLS 2 SPACES
BUILDING TRUCK DOCKS:	10X10 DOCK - HIGH OH DOORS 7 12X10 GRADE LEVEL OH DOORS 1

- KEY NOTES**
- IRRIGATED AREA, SEE LANDSCAPE L1.01
 - ACCESSIBLE ENTRY SIGNAGE
 - CONCRETE PAVEMENT
 - BIKE RACK, SEE DETAIL 8/A-602
 - BIKE LOCKERS
 - TRASH ENCLOSURE PER CITY STANDARDS, SEE DETAIL 3/A-602
 - N/A
 - EXISTING FENCE TO BE REMOVED
 - FIRE LANE ENTRY SIGNAGE
 - ACCESSIBLE CURB RAMP WITH TRUNCATED DOMES
 - SIDE WALK
 - EASEMENT AS PER CITY REQUIREMENTS

GENERAL NOTES

- SITE LEGEND**
- TRANSFORMER WITH CONCRETE PAD
 - PARKING STALL COUNT TOTAL
 - DOCK HIGH TRUCK DOOR
 - 26' FIRE LANE
 - GRADE LEVEL TRUCK DOOR
 - PROPERTY LINE
 - LANDSCAPE
 - EASEMENT



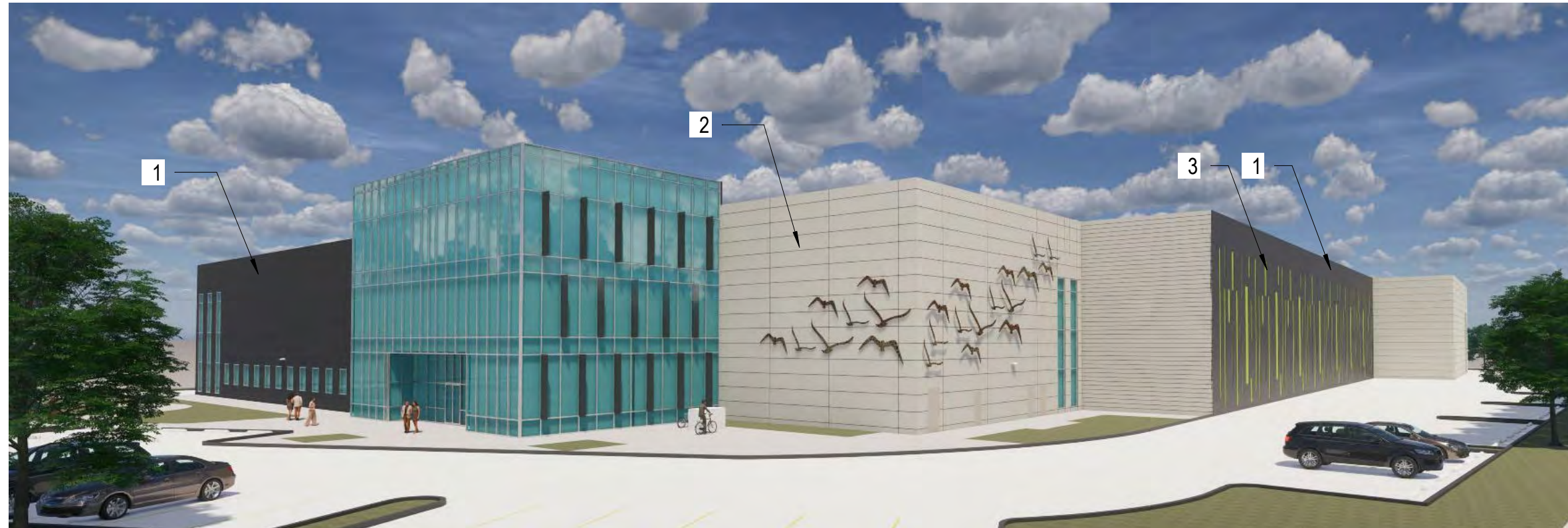
STIPULATION #4 ARCHIMEDES SCREW RELOCATION
STIPULATION #5 INTERPRETIVE PANEL BUILT FROM SALVAGE MATERIALS

LANDS OF DEPARTMENT OF FISH & GAME
2002-132615 OR

LANDS OF OLIVER PROPERTIES, LLC

1 SITE PLAN
1" = 40'-0"

3/12/2021 11:41:02 AM BIM 360://U-Haul Hayward/U-Haul Hayward_sahm02EL.rvt



1
CENTRIA METAL
PANEL
154 DARK BRONZE



2
STOREFRONT
SYSTEM



1
CENTRIA METAL
PANEL
154 DARK BRONZE



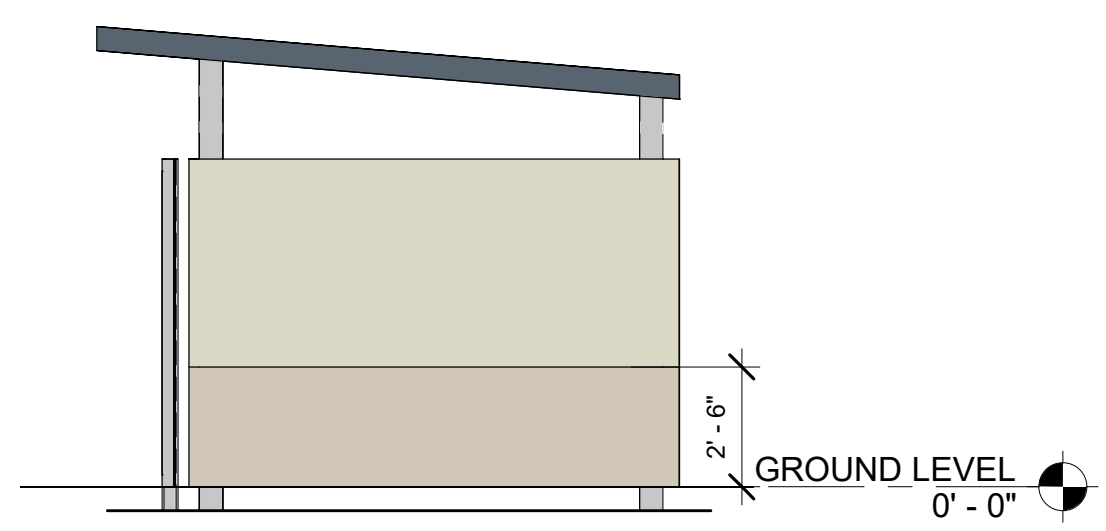
MATERIAL BOARD

Project number	U2301
Date	03/30/2020
Drawn by	RS
Checked by	RFT

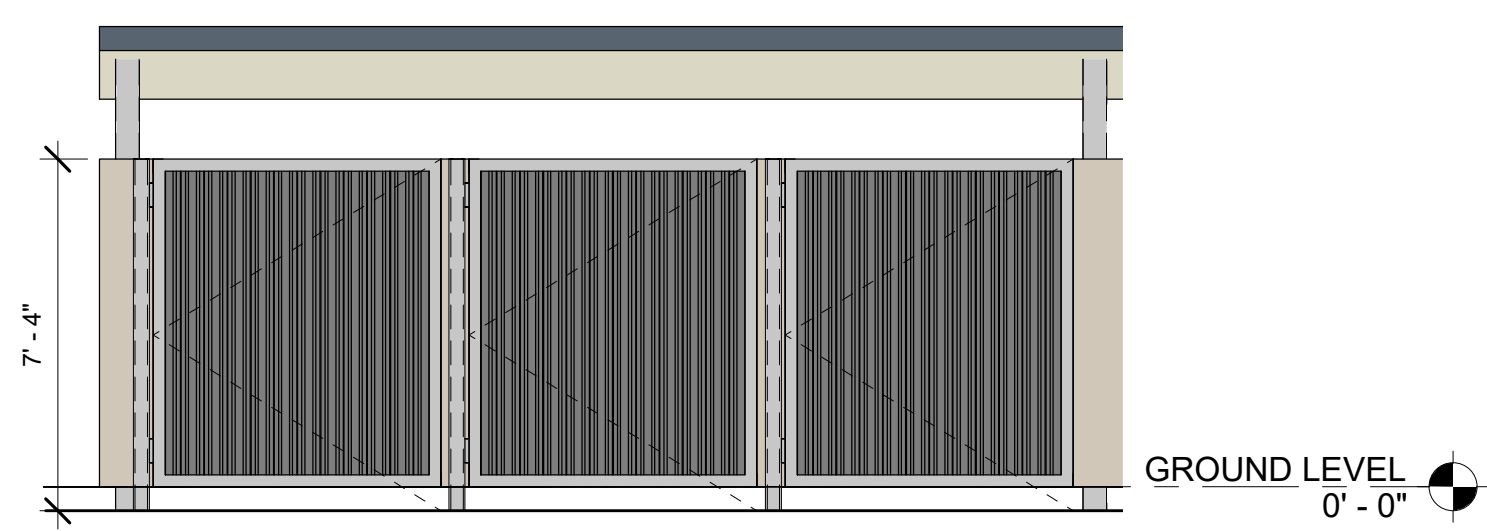
A-502

Scale 1 1/2" = 1'-0"

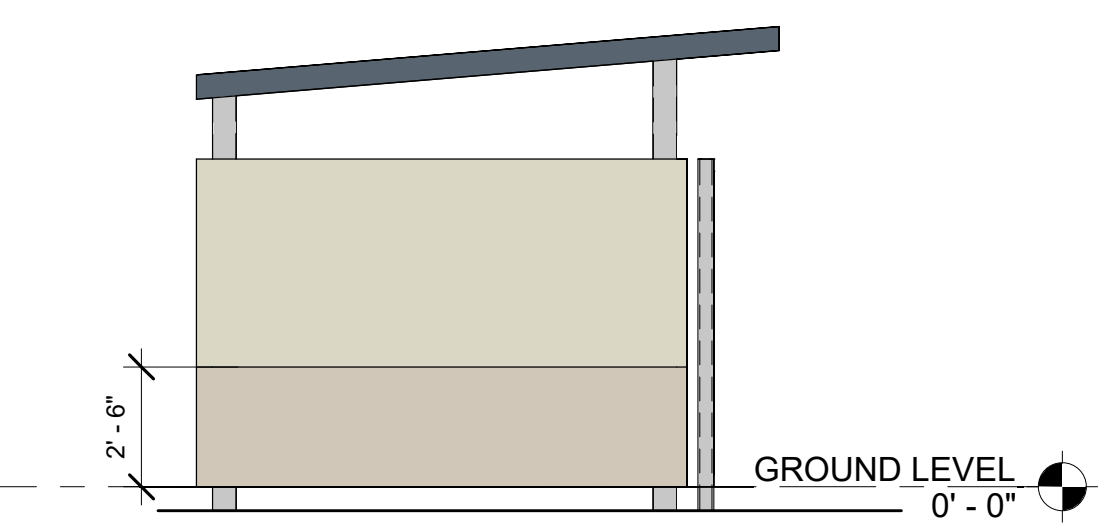
4/24/2020 5:41:23 PM



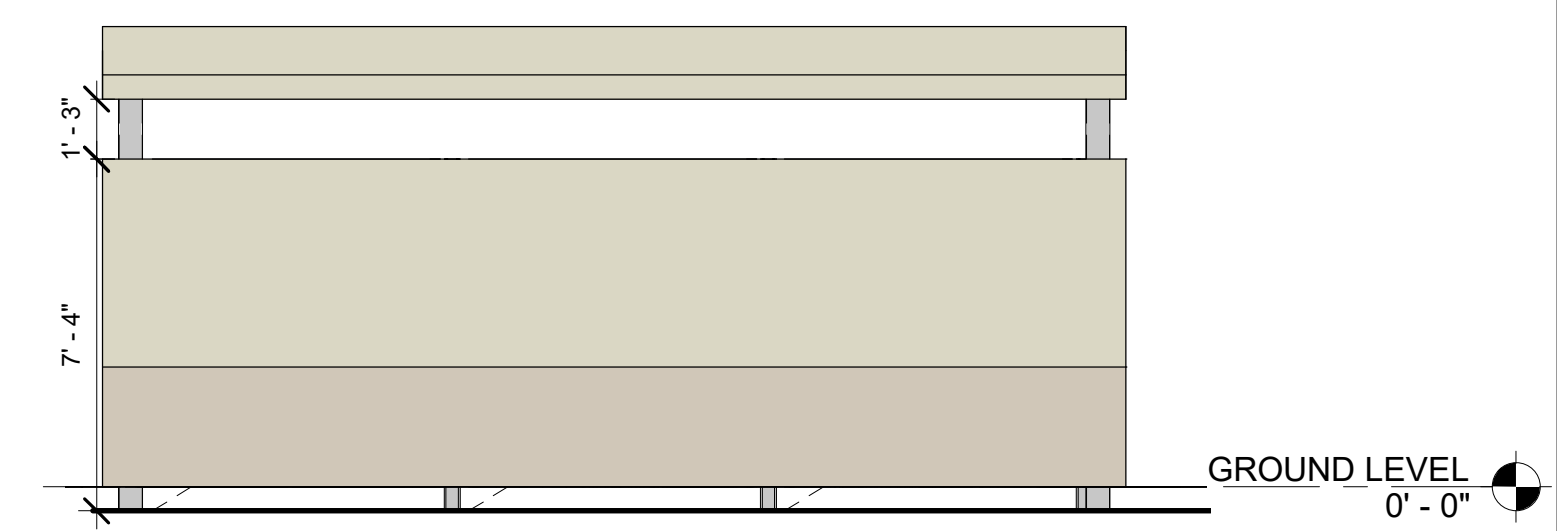
16 NORTH - TRASH ENCLOSURE
 1/4" = 1'-0"



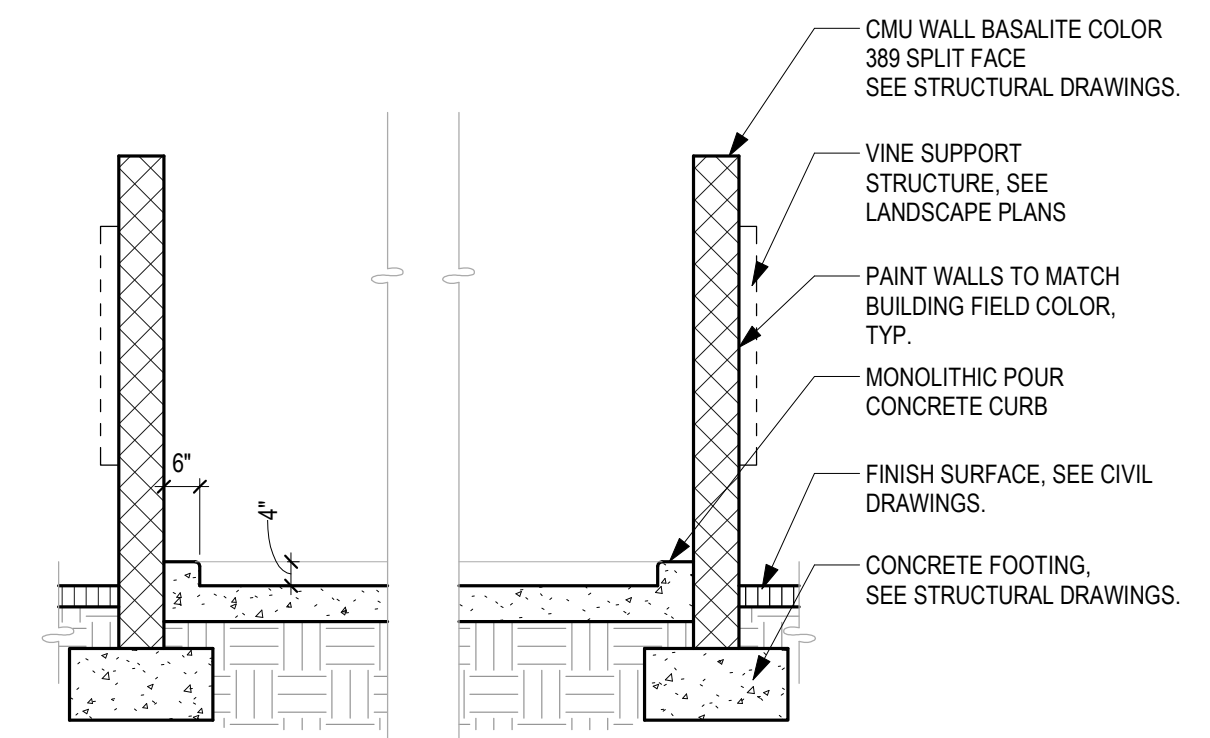
12 EAST ELEVATION - TRASH ENCLOSURE
 1/4" = 1'-0"



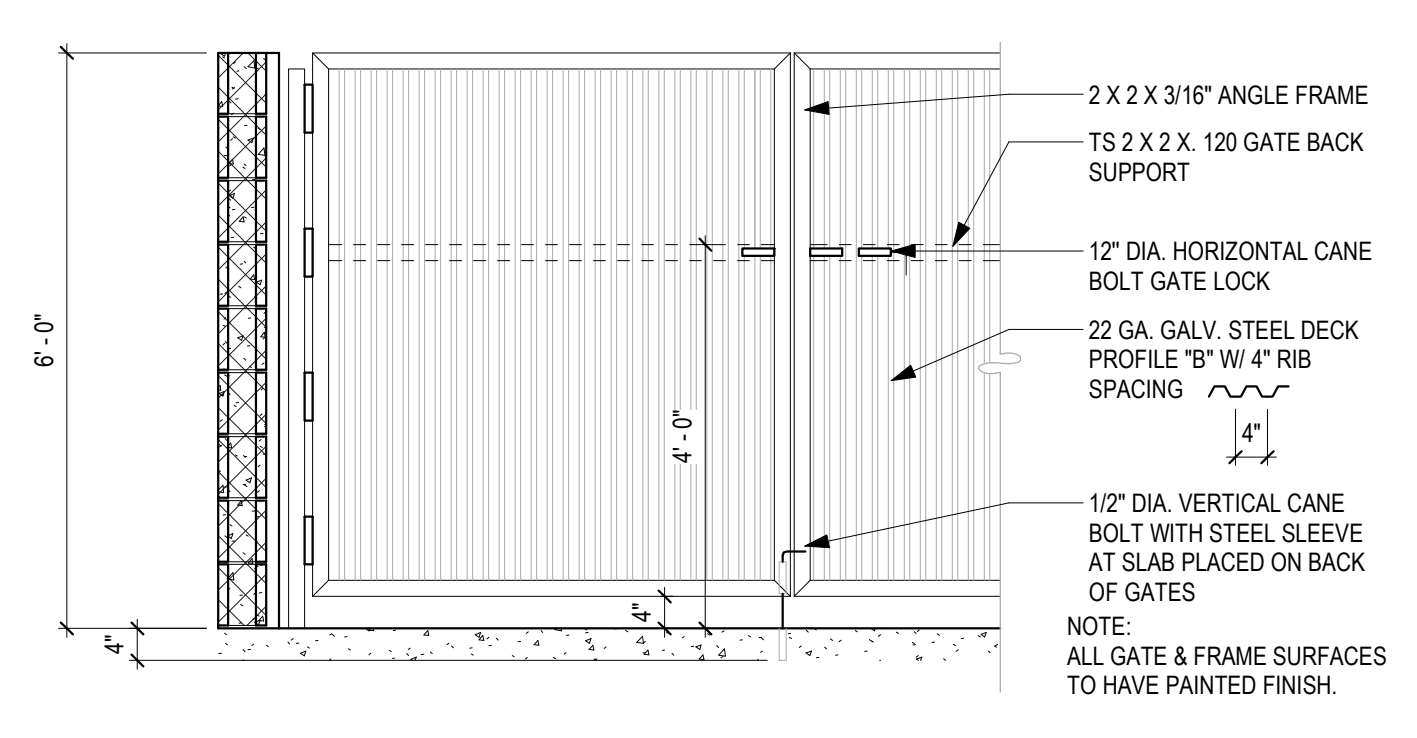
8 SOUTH ELEVATION - TRASH ENCLOSURE
 1/4" = 1'-0"



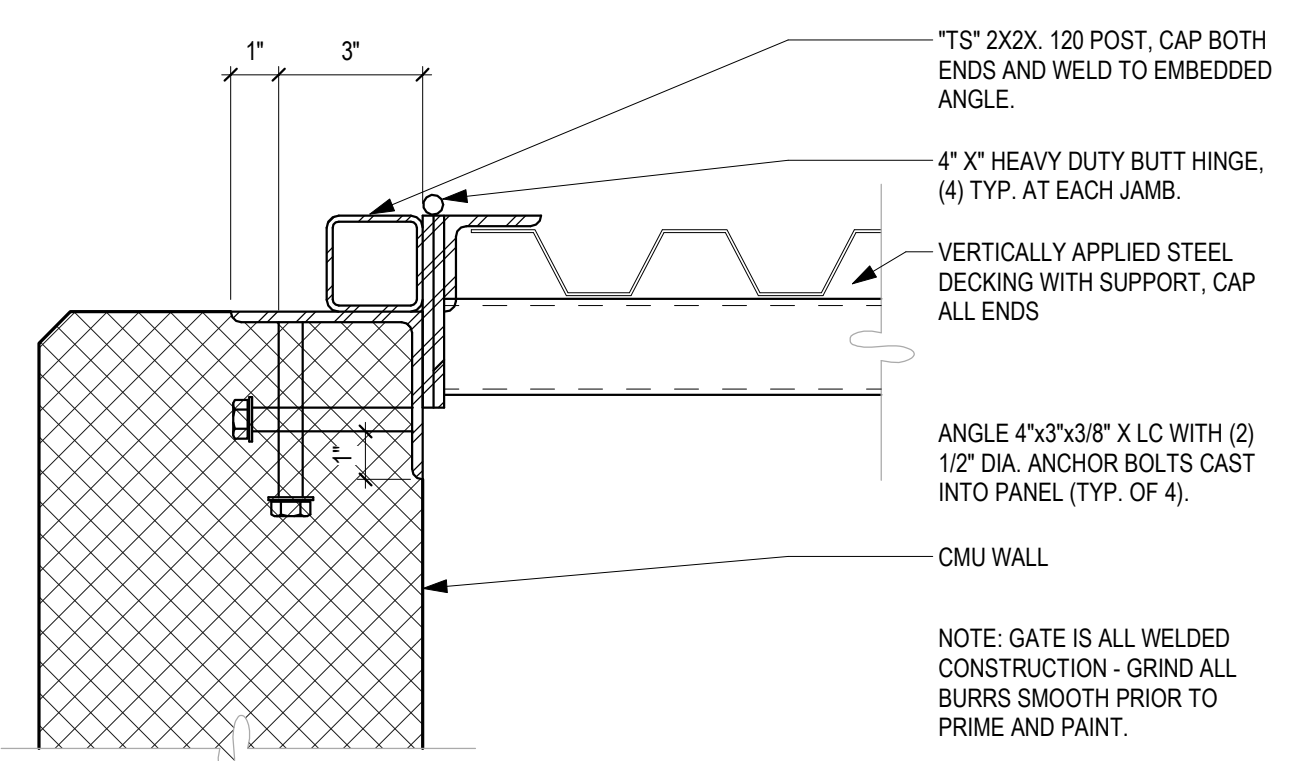
4 WEST ELEVATION - TRASH ENCLOSURE
 1/4" = 1'-0"



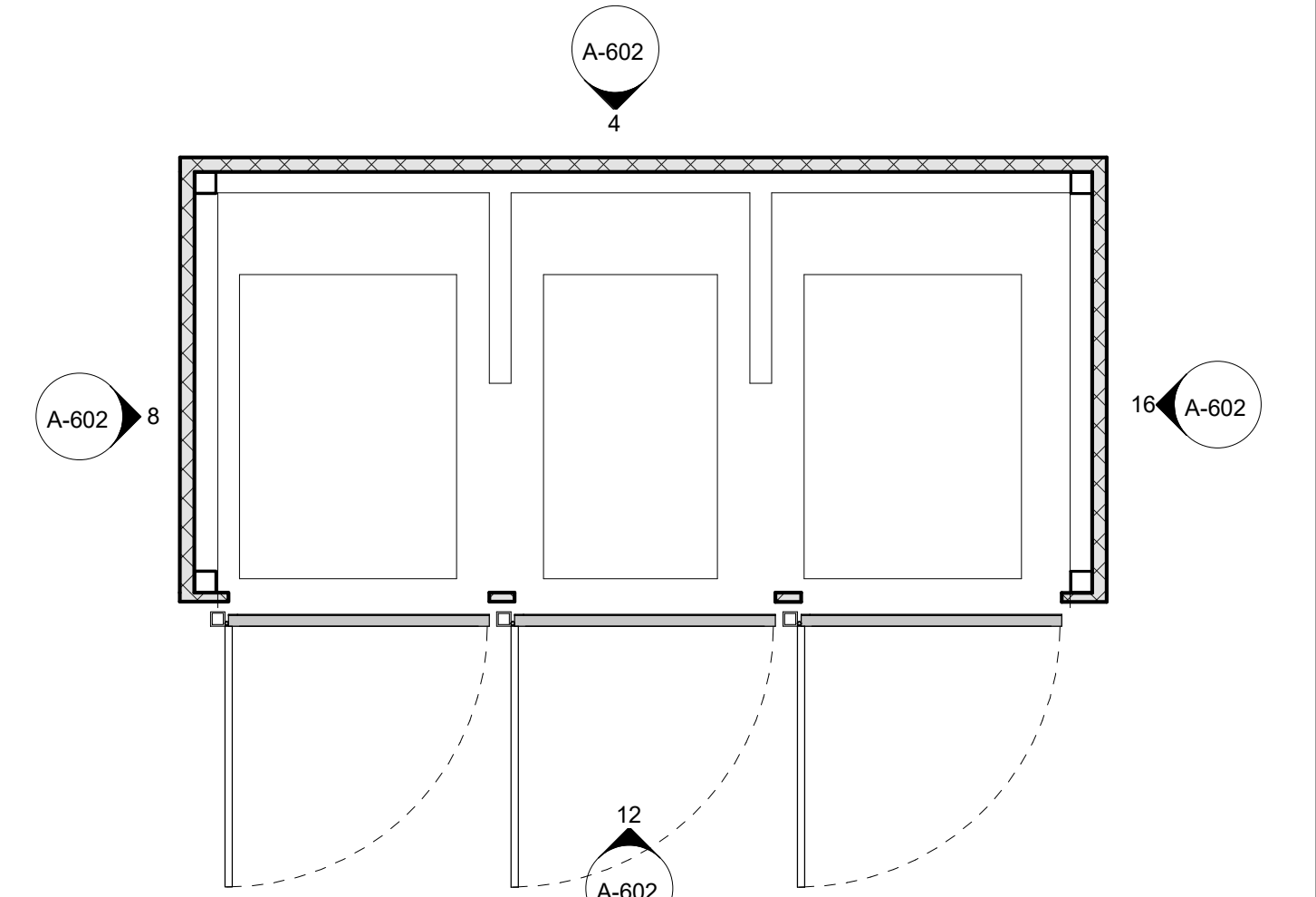
15 TRASH ENCLOSURE SECTION
 3/8" = 1'-0"



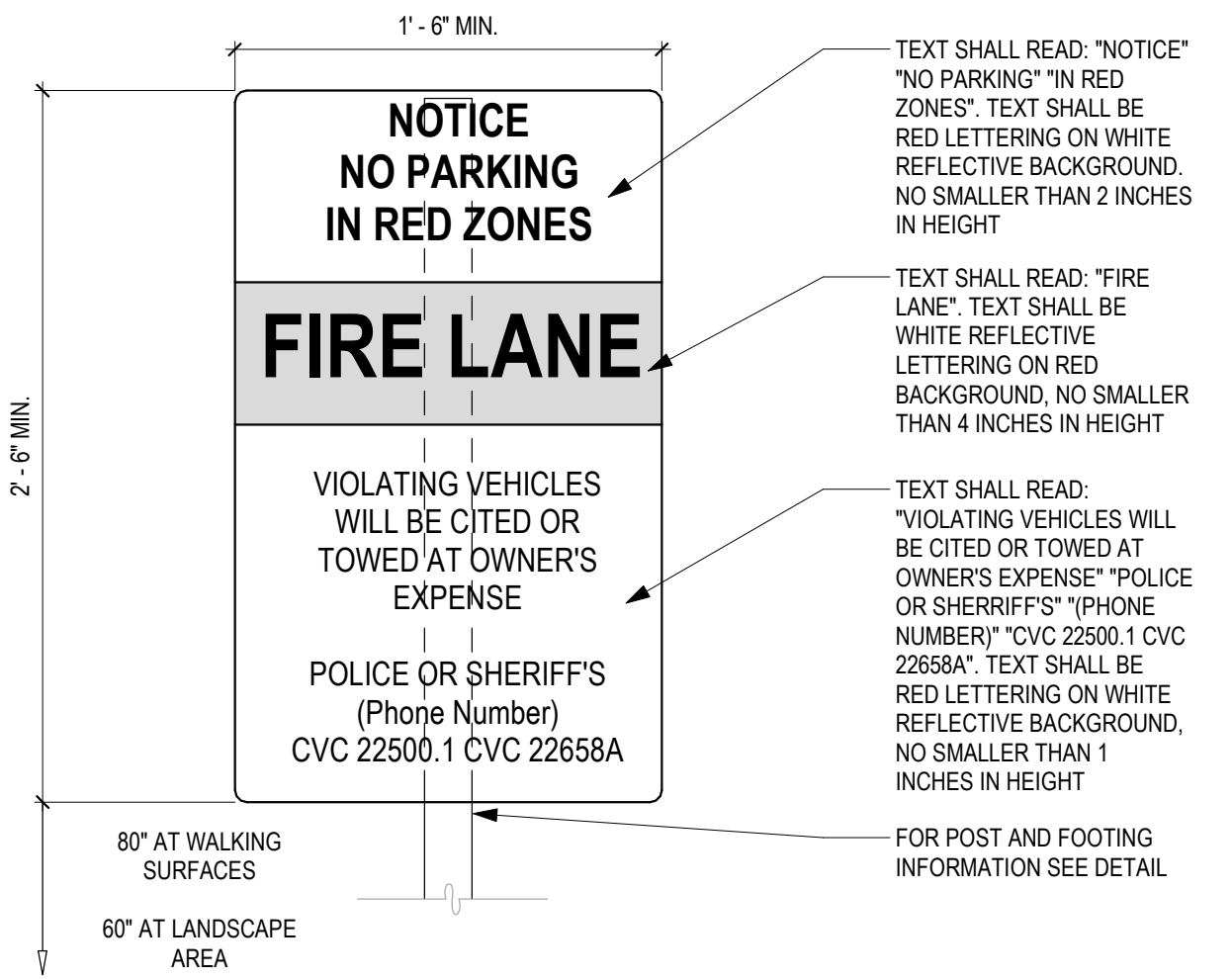
11 TRASH ENCLOSURE GATE
 1/2" = 1'-0"



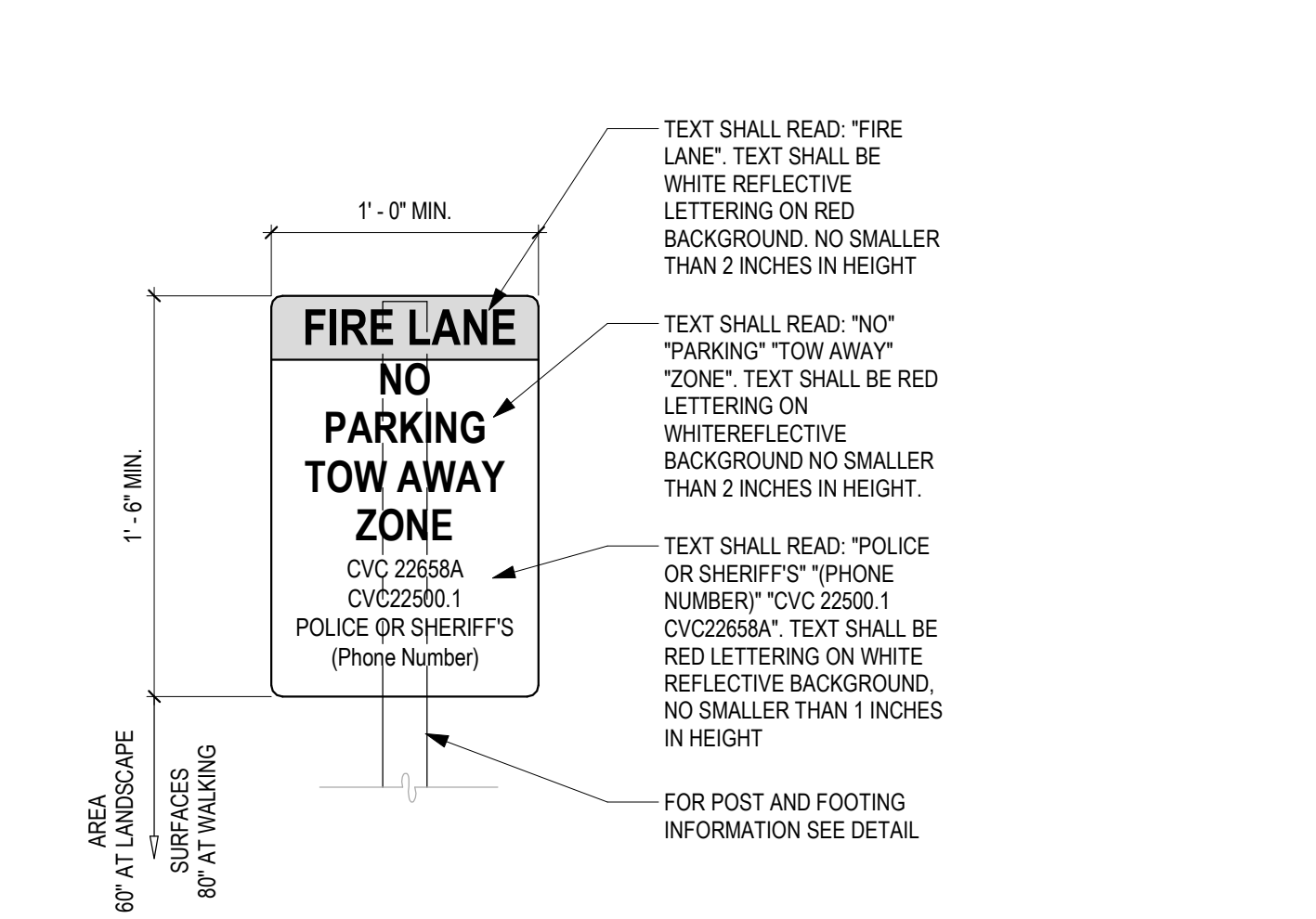
7 TRASH GATE JAMB AT CMU
 3" = 1'-0"



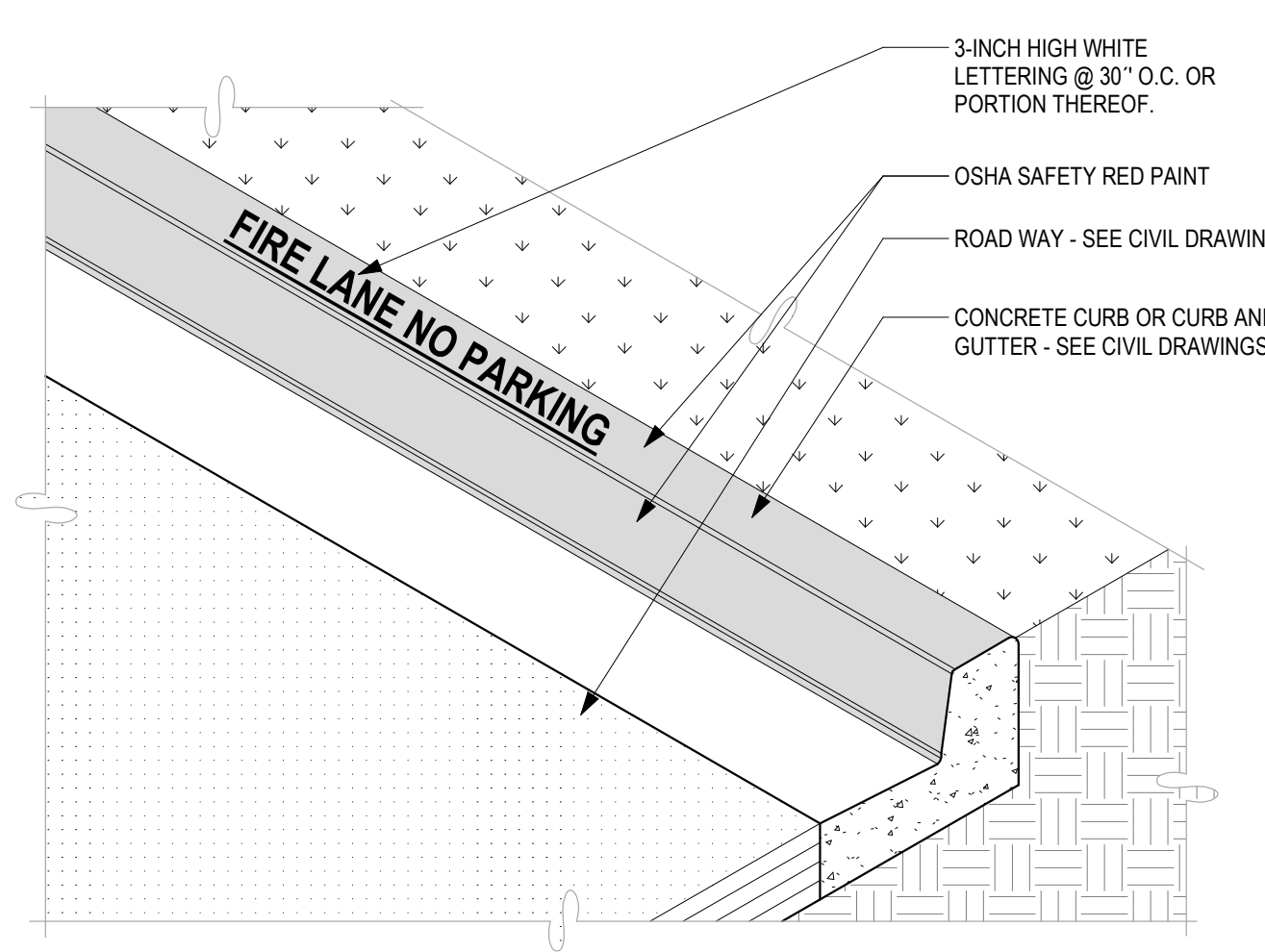
3 TRASH ENCLOSURE
 1/4" = 1'-0"



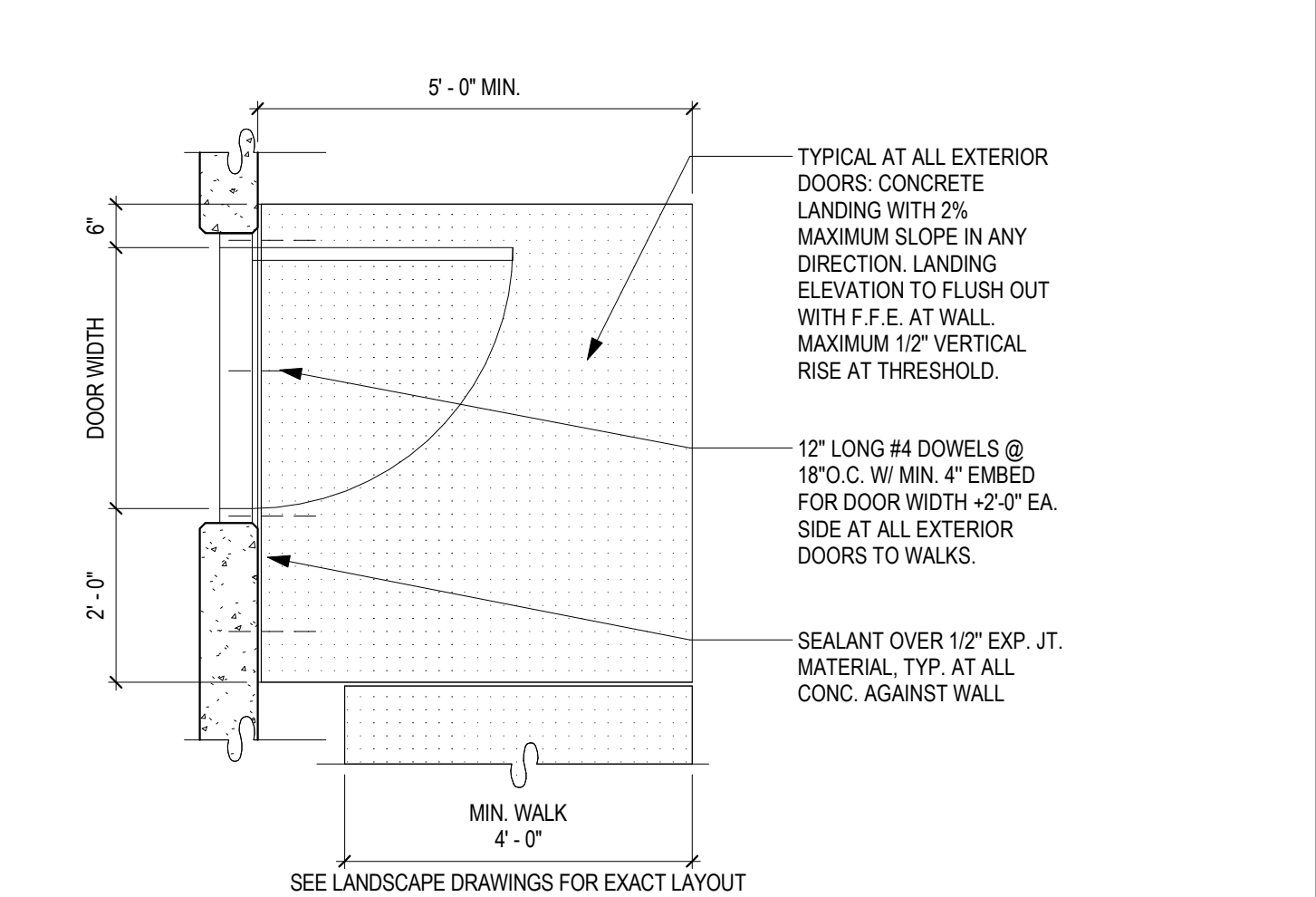
14 FIRELANE ENTRY SIGNAGE
 1 1/2" = 1'-0"



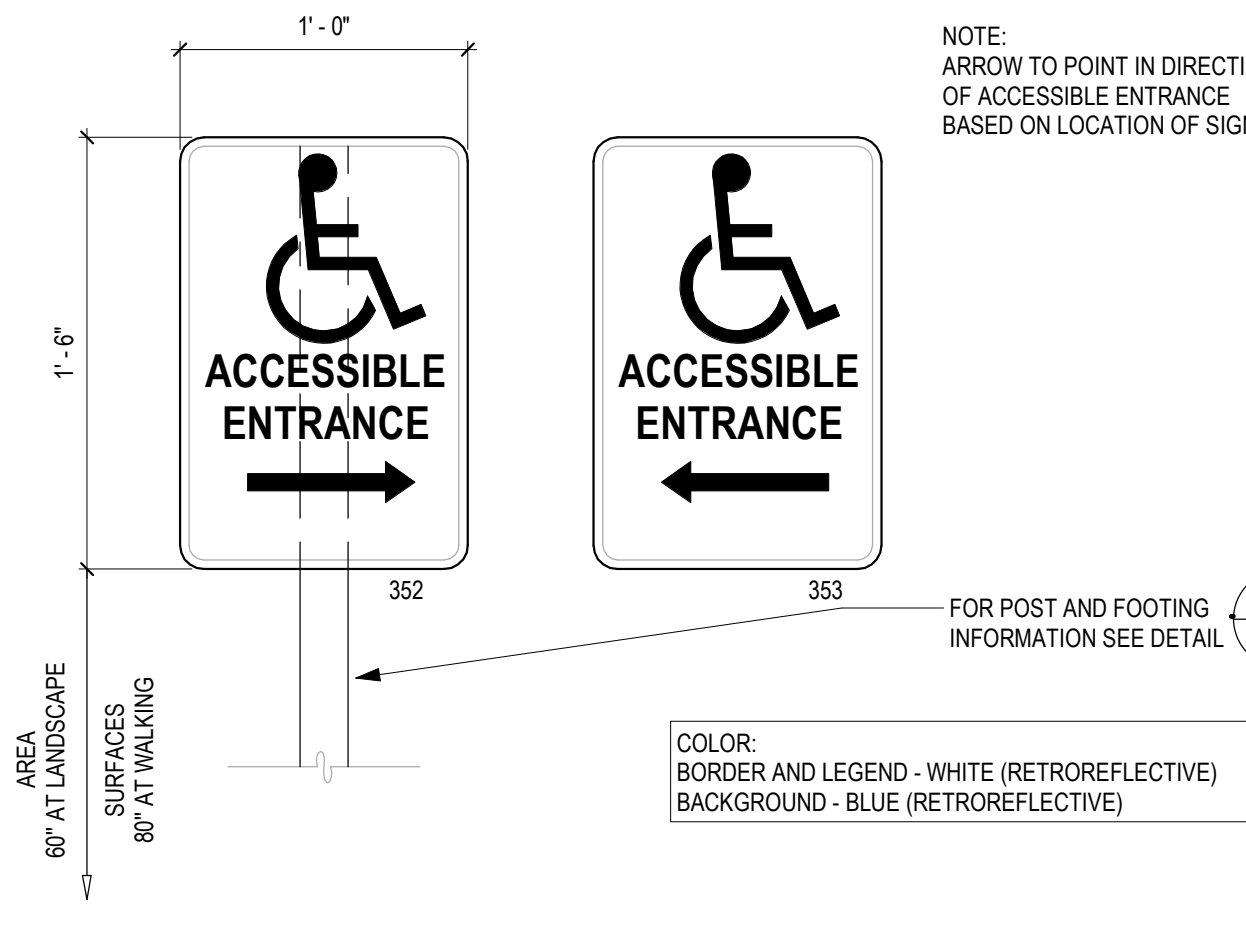
10 FIRELANE SIGNAGE
 1 1/2" = 1'-0"



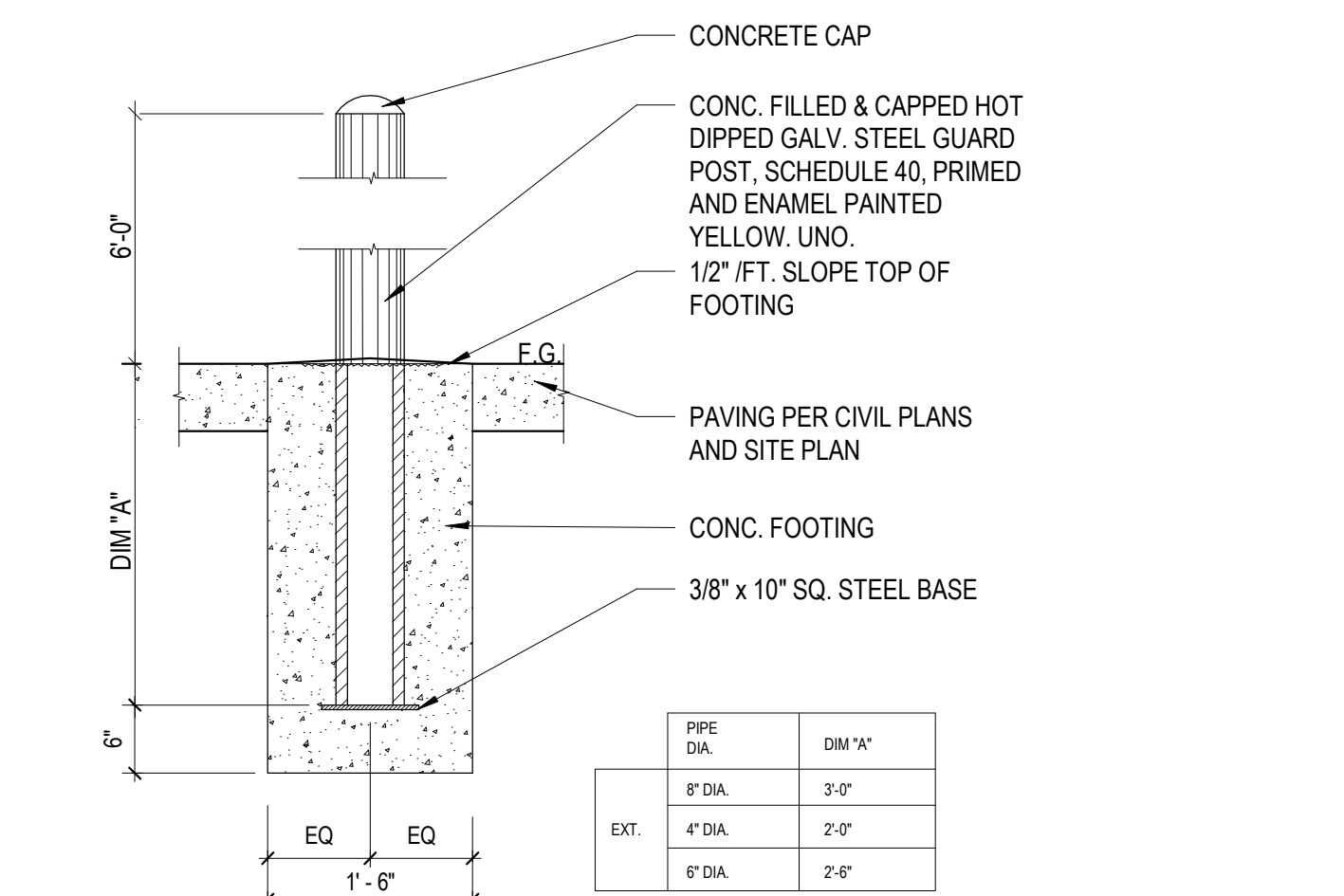
6 FIRE LANE CURB
 3/4" = 1'-0"



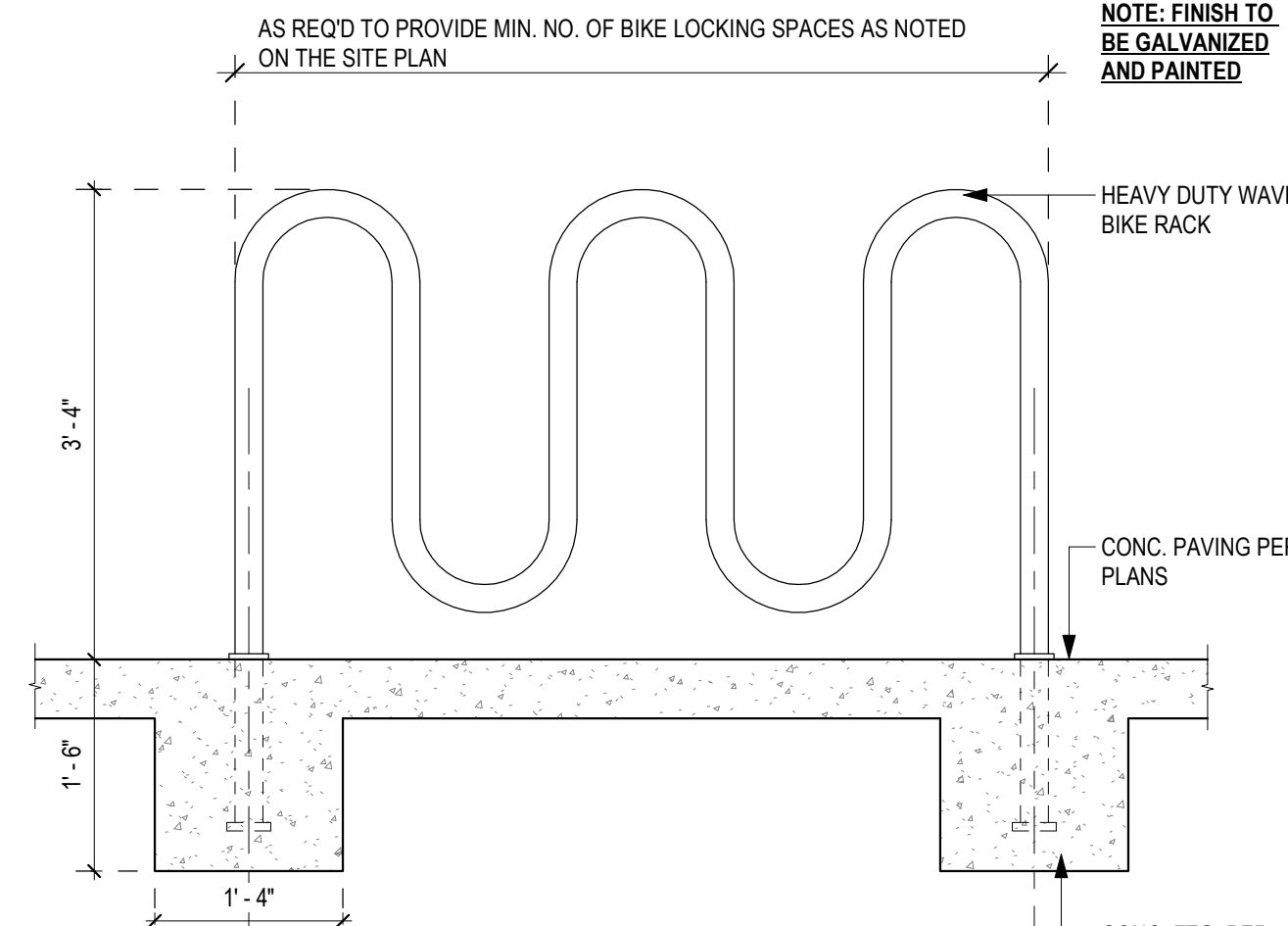
2 CONCRETE LANDING
 1/2" = 1'-0"



13 ACCESSIBLE DIRECTION SIGN
 1 1/2" = 1'-0"



9 EXTERIOR BOLLARD
 3/4" = 1'-0"



5 BIKE RACK 7 SPACES
 3/4" = 1'-0"

PROFESSIONAL STAMP:
 AGENCY APPROVAL:

ITEM:	REVISION/ISSUE:	DATE:
A	PLANNING SUBMITTAL	01/27/20
B	PLANNING RESUBMITTAL	04/24/20

KEY PLAN:

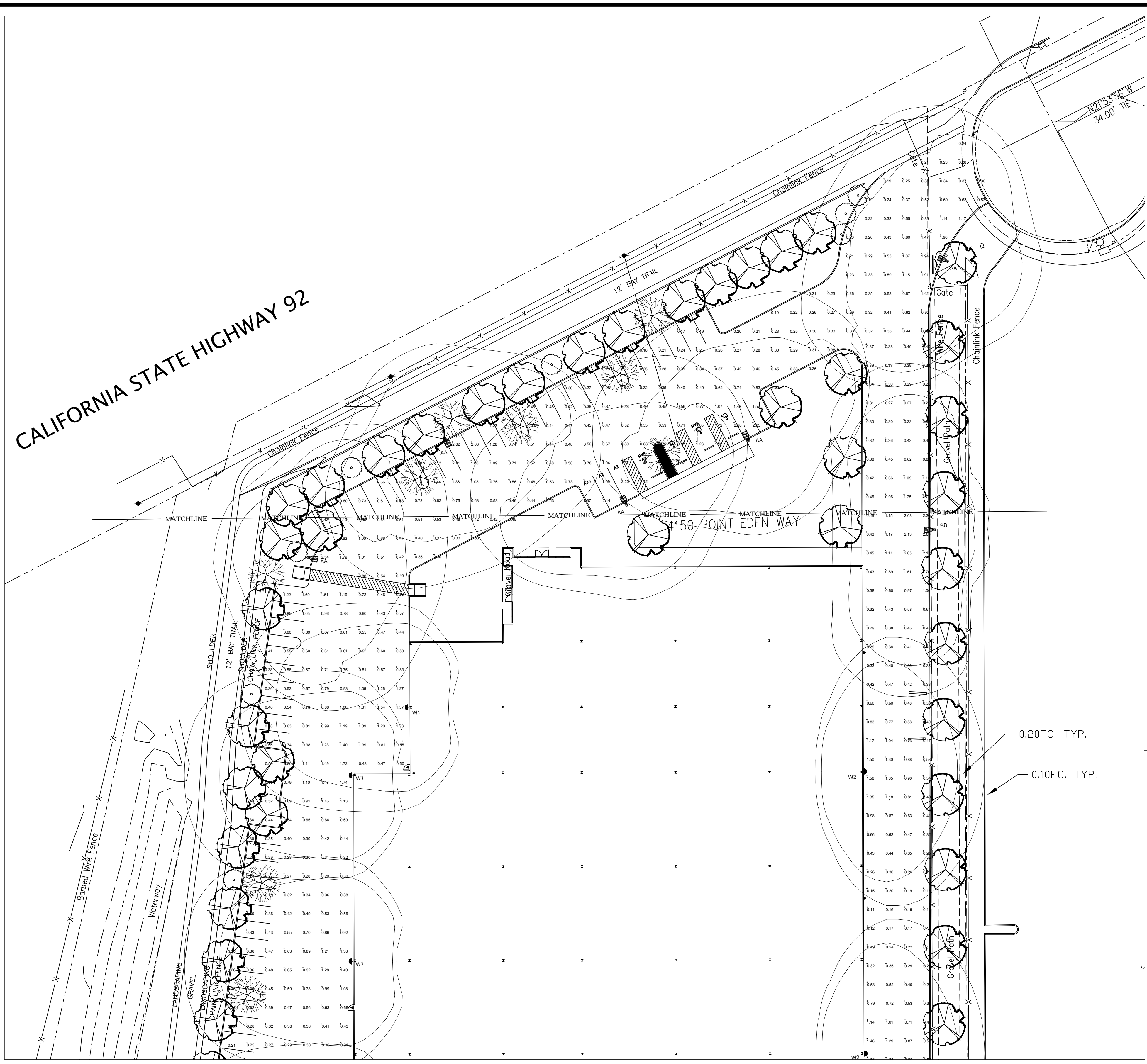
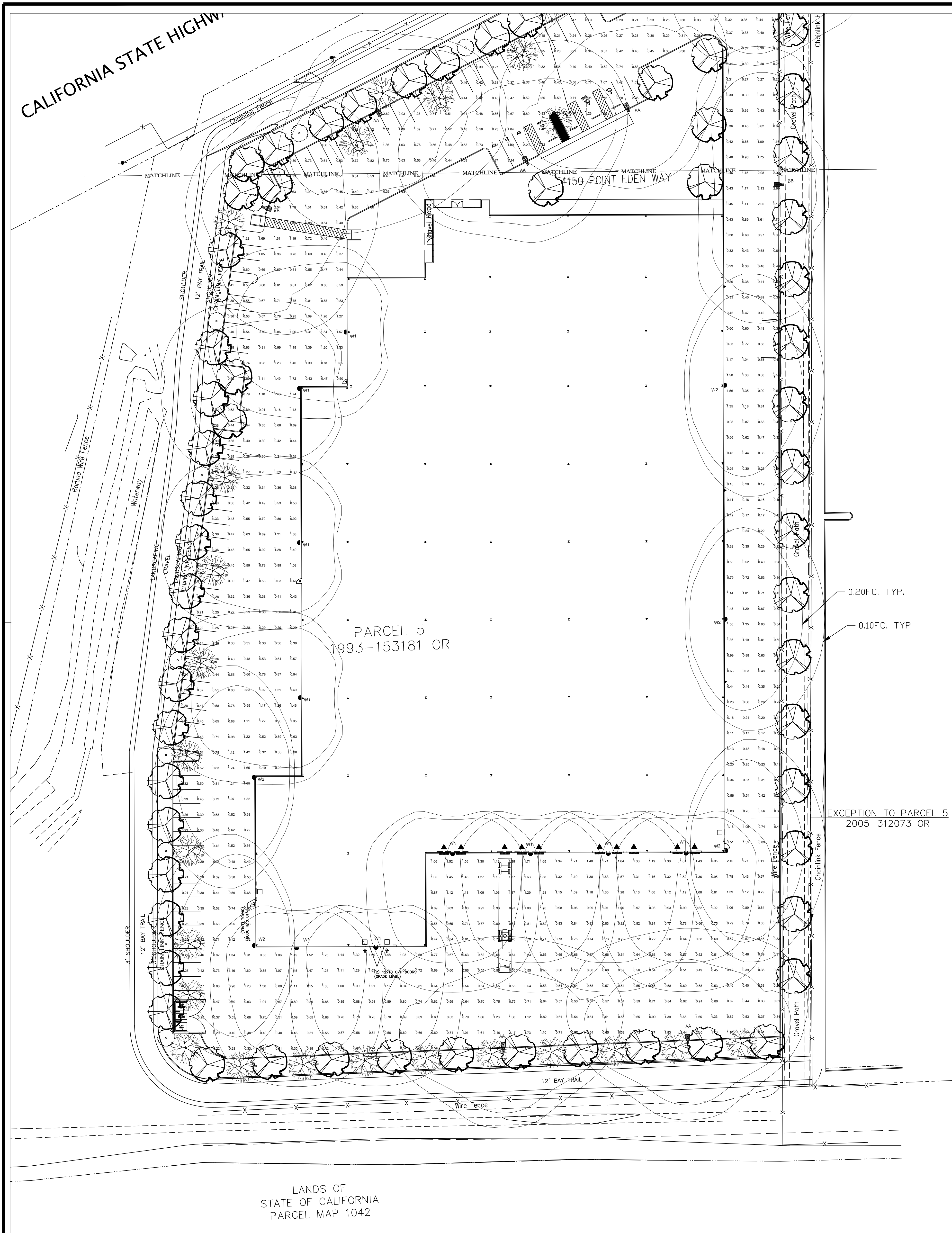
Owner
U-HAUL COMPANY OF SAN FRANCISCO

4150 POINT EDEN WAY

TRASH ENCLOSURE & OTHER DETAILS

DRAWN BY: Author CHECKED BY: Checker
 DATE: 03/30/2020 PROJECT NO: U2301
 SHEET NO:

A-602



Luminaire Schedule - LED

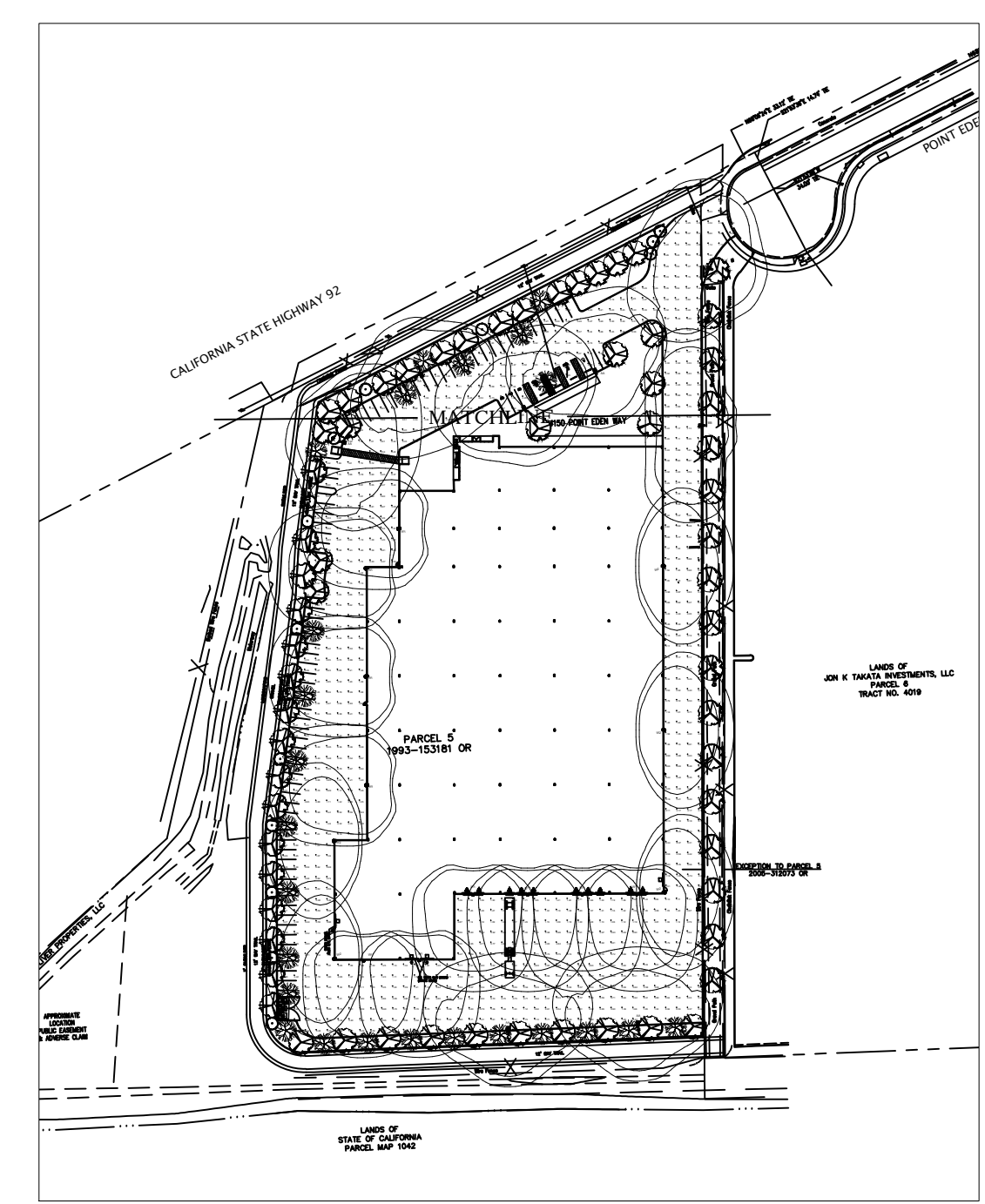
Project: U-HAUL - HAYWARD

Symbol	Qty	Label	Arrangement	Lum. Watts	Lum. Lumens	LLF	LLD	LDD	UDF	Description	Filename
AA	7	AA	SINGLE	52,770.3	8059	0.900	0.900	1.000	1.000	AR13-48N-MV-NW-4-XX-080	AR13-48N-MV-NW-4-XX-080.ies
BB	1	BB	SINGLE	52,823.3	7941	0.900	0.900	1.000	1.000	AR13-48N-MV-NW-3-XX-080	AR13-48N-MV-NW-3-XX-080.ies
W1	10	W1	SINGLE	58.7	5738	0.900	0.900	1.000	1.000	ES1-24H-MV-NW-FT-XX-700	IES ES1-24H-MV-NW-FT-XX-700.05
W2	5	W2	SINGLE	58.6	5771	0.900	0.900	1.000	1.000	ES1-24H-MV-NW-W-XX-700	IES ES1-24H-MV-NW-W-XX-700.040

Calculation Summary

Project: U-HAUL - HAYWARD

Description	CalcType	Units	Grid Z	Avg	Max	Min	Avg/Min	Max/Min
AUTO PARKING AND PAVED DRIVES	Illuminance	Fc	0	0.68	2.62	0.17	4.00	15.41
EAST TRUCK DRIVE	Illuminance	Fc	0	0.60	2.69	0.11	5.45	24.45
TRUCK LOAD - UNLOAD AREA	Illuminance	Fc	0	0.84	2.54	0.20	4.20	12.70



ALL VALUES SHOWN ARE MAINTAINED HORIZONTAL FOOTCANDLES AT GRADE

PHOTOMETRIC DATA USED AS INPUT FOR THESE CALCULATIONS IS BASED ON ESTABLISHED IES PROCEDURES AND PUBLISHED LAMP RATINGS. FIELD PERFORMANCE WILL DEPEND ON ACTUAL LAMP, BALLAST, ELECTRICAL, AND SITE CHARACTERISTICS.

Calculations have been performed according to IES standards and good practice. Some differences between measured values and calculated results may occur due to tolerances in calculation methods, testing procedures, component performance, measurement techniques and field conditions such as voltage and temperature variations. Input data used to generate the attached calculations such as room dimensions, reflectances, furniture and architectural elements significantly affect the lighting calculations. If the real environment conditions do not match the input data, differences will occur between measured values and calculated values.

Associated Lighting Representatives, Inc.

ASSOCIATED LIGHTING REPRESENTATIVES, INC.
7777 PARDEE LANE
P.O. BOX 2265
OAKLAND, CA 94621
PHONE: (510) 638-0158 - FAX (510) 638-2908

REPORT FOR: ATI ARCHITECTS + ENGINEERS
BY: APPLICATIONS ENGINEERING; RAMON ZAPATA
SALES REPRESENTATIVE: ALR; TIM HALEY

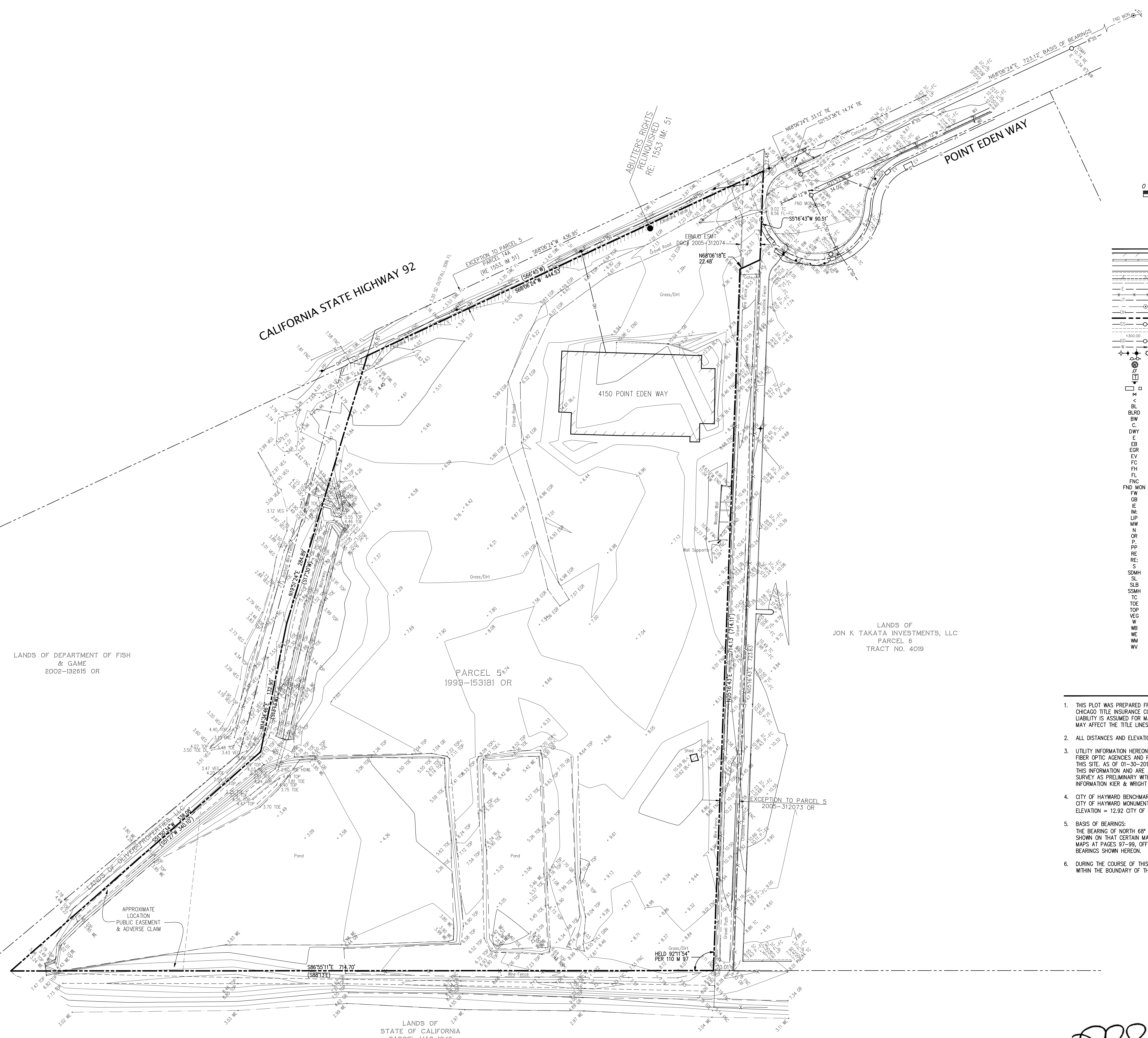
AGI32 VERSION 18.11
AGI (C) 2019 LIGHTING ANALYSTS, INC.
10288 W. CENTENNIAL ROAD, SUITE 202
LITTLETON, CO 80127

PROJECT DESCRIPTION

U-HAUL
CITY OF HAYWARD

DRAWING NO. / INPUT FILE
17579HAL.DWG / 17579HAL.A32

SCALE	SHEET	DATE	REV
1" = 30'	1 OF 1	01.03.2019	X



0 20 40 80 120
Scale 1" = 40'

LEGEND

	BUILDING LINE
	CONCRETE/BLOCK/RETAINING WALL
	CONCRETE CURB
	CONCRETE CURB & GUTTER
	DRIVEWAY
	EDGE OF PAVEMENT
	FENCE LINE
	JOINT TRENCH
	MONUMENT/MONUMENT LINE
	OVERHEAD POWER LINE
	PROPERTY LINE
	SANITARY SEWER-MANHOLE & CLEANOUT
	SIDEWALK
	STORM DRAIN-MANHOLE & CATCH BASIN
	WATER LINE & VALVE
	SPOT ELEVATION
	FIRE HYDRANT
	MONITORING WELL
	POWER POLE/JOINT POLE
	TRANSFORMER
	TRAFFIC SIGN
	UTILITY BOX
	WATER VALVE
	ANGLE POINT
	BUILDING LINE
	BOLLARD
	BACK OF WALK
	CONCRETE
	DRIVEWAY
	EAST
	ELECTRIC BOX
	EDGE OF GRAVEL ROAD
	ELECTRICAL VAULT
	FACE OF CURB
	FIRE HYDRANT
	FLOWLINE
	FENCE
	FOUND MONUMENT
	FACE OF WALL
	GRADE BREAK
	INVERT ELEVATION
	IMAGE
	LIP OF GUTTER
	MONITORING WELL
	NORTH
	OFFICIAL RECORDS
	PAVEMENT
	POWER POLE
	RIM ELEVATION
	REEL
	SOUTH
	STORM DRAIN MANHOLE
	STREET LIGHT
	STREET LIGHT BOX
	SANITARY SEWER MANHOLE
	TOP OF CURB
	GRADE BREAK LINE TOE
	EDGE OF VEGETATION
	WEST
	WATER BOX
	WATER EDGE
	WATER METER
	WATER VALVE

NOTES

- THIS PLOT WAS PREPARED FROM INFORMATION FURNISHED IN A PRELIMINARY TITLE REPORT, PREPARED BY CHICAGO TITLE INSURANCE COMPANY, DATED OCTOBER 24, 2014, NUMBER FWAC-1014002350-KD. NO LIABILITY IS ASSUMED FOR MATTERS OF RECORD NOT STATED IN SAID PRELIMINARY TITLE REPORT THAT MAY AFFECT THE TITLE LINES, OR EXCEPTIONS, OR EASEMENTS OF THE PROPERTY.
- ALL DISTANCES AND ELEVATIONS SHOWN HEREON ARE IN FEET AND DECIMALS THEREOF.
- UTILITY INFORMATION HEREON IS IN PROGRESS AT THIS TIME. A REQUEST WAS MADE TO THE RESPECTIVE FIBER OPTIC AGENCIES AND PG&E FOR INFORMATION REGARDING THE LOCATION OF THEIR FACILITIES ON THIS SITE. AS OF 01-30-2015, THEY HAD NOT RESPONDED WITH THIS INFORMATION. UNTIL WE RECEIVE THIS INFORMATION AND ARE ABLE TO DELINEATE THESE FACILITIES, ALL PARTIES SHOULD CONSIDER THIS SURVEY AS PRELIMINARY WITH REGARDS TO THE LOCATION OF UTILITY FACILITIES. UPON RECEIPT OF THIS INFORMATION KIER & WRIGHT WILL UPDATE THIS SURVEY AND REISSUE IT.
- CITY OF HAYWARD BENCHMARK:
CITY OF HAYWARD MONUMENT DISK AT EDEN LANDING ROAD AND POINT EDEN WAY.
ELEVATION = 12.92 CITY OF HAYWARD DATUM (NGVD 1929)
- BASIS OF BEARINGS:
THE BEARING OF NORTH 68° 06' 24" EAST TAKEN ON THE MONUMENT LINE OF POINT EDEN WAY AS SHOWN ON THAT CERTAIN MAP OF TRACT 4019, FILED FOR RECORD ON JUNE 28, 1979, IN BOOK 110 OF MAPS AT PAGES 97-99, OFFICIAL RECORDS OF ALAMEDA COUNTY WAS TAKEN AS THE BASIS FOR ALL BEARINGS SHOWN HEREON.
- DURING THE COURSE OF THIS SURVEY, THERE WAS NO OBSERVED EVIDENCE OF WETLANDS MARKERS WITHIN THE BOUNDARY OF THE SUBJECT PROPERTY.

LANDS OF DEPARTMENT OF FISH & GAME
2002-192615 OR

PARCEL 5
1993-153181 OR

LANDS OF
JON K TAKATA INVESTMENTS, LLC
PARCEL 6
TRACT NO. 4019

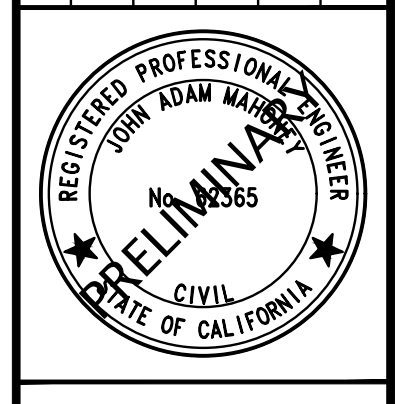
LANDS OF
STATE OF CALIFORNIA
PARCEL MAP 1042

PREPARED BY OR UNDER THE SUPERVISION OF
RODNEY A. STEWART II P.L.S. 9225
LICENSE EXPIRES: 9-30-17

06/22/2016
DATE



BY		REVISION
NO.		
BY		
NO.		
BY		
NO.		



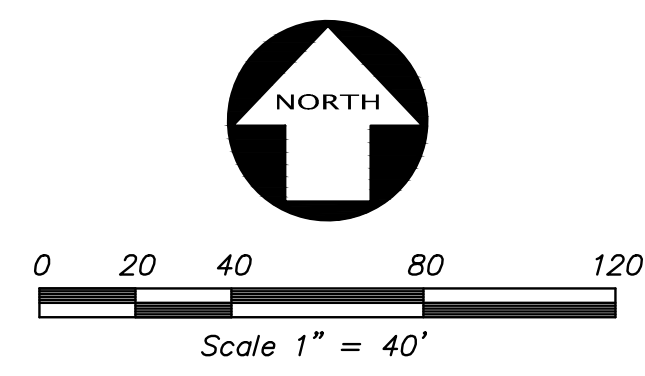
KIER+WRIGHT
2850 Collier Canyon Road
Livermore, CA 94551
Phone: (925) 245-9288
www.kierwright.com



TOPOGRAPHIC SURVEY
OF
4150 POINTE EDEN WAY
FOR
U-HAUL, INC.

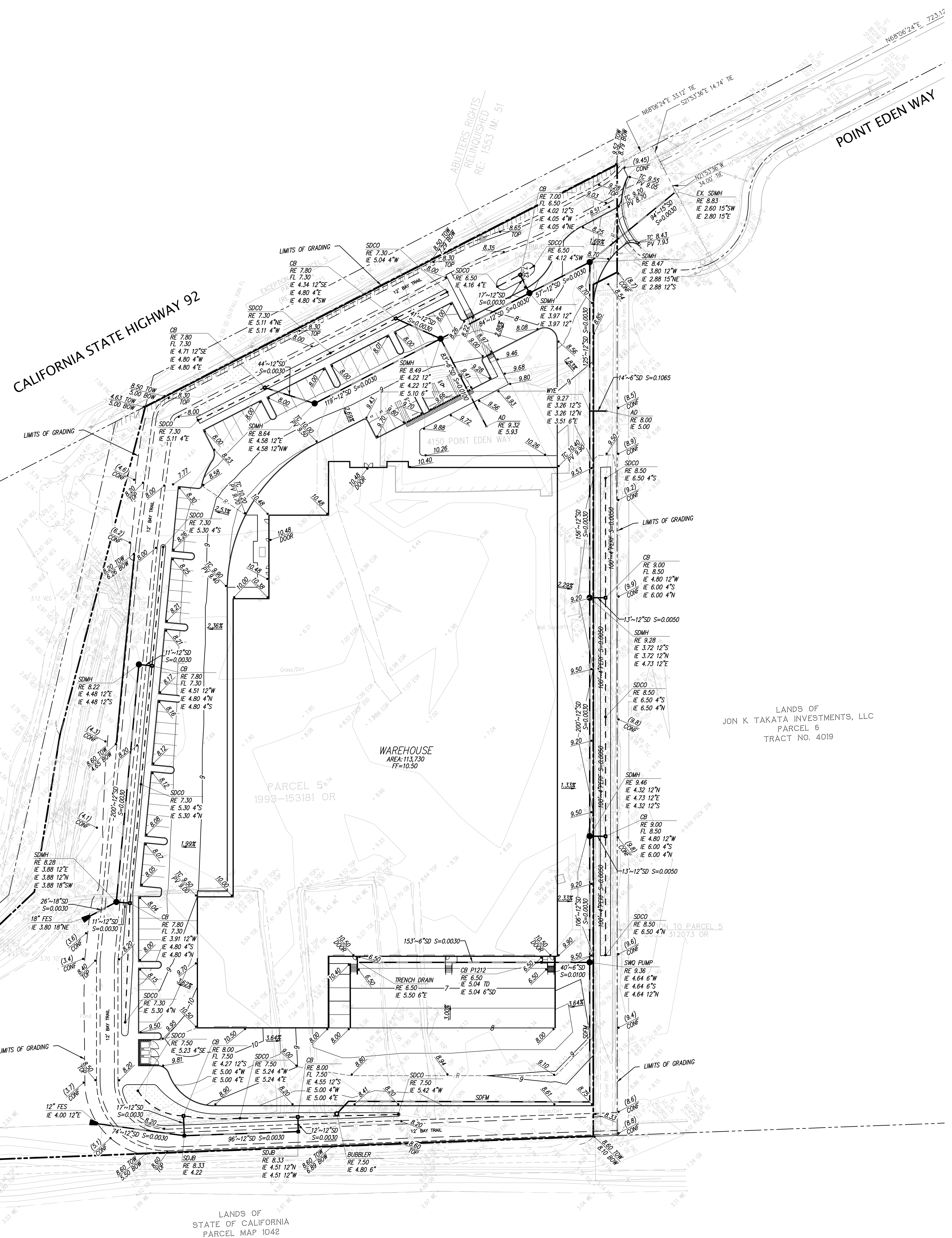
HAYWARD, CALIFORNIA

DATE	APRIL, 2020
SCALE	1" = 40'
DESIGNER	KS/SS
DRAWN BY	TB/JTG
JOB NO.	A19640
SHEET	C1.0
OF	8 SHEETS



LEGEND

PROPOSED	EXISTING	DESCRIPTION
		ASPHALT BERM
		BLOCK/RETAINING WALL
		BUILDING LINE
		FLURRY CONCRETE CURB
		CONCRETE CURB
		CONCRETE CURB CUT
		CONCRETE CURB & GUTTER
		CONTOUR LINE
		DRIVEWAY
		EDGE OF PAVEMENT
		FENCE LINE
		LOT LINE
		MONUMENT/MONUMENT LINE
		PERFORATED STORM DRAIN PIPE
		PROPERTY LINE
		RAINWATER LEADER
		SIDE WALK
		STORM DRAIN-MANHOLE & CATCH BASIN
		THRU CURB DRAIN
		SPOT ELEVATION
		TRAFFIC SIGN
		TREE
		UTILITY BOX
		AREA DRAIN
		BACK OF WALK
		BUILDING
		BUILDING LINE
		CATCH BASIN
		CLEARCUT TO GRADE
		CONCRETE
		DOOR
		DOWN SPOUT
		DUCTILE IRON PIPE
		EASEMENT
		EDGE OF WALK
		FACE OF BERM
		FACE OF CURB
		FACE OF WALL
		FINISHED FLOOR
		FLOW LINE
		GRADE BREAK
		HIGH POINT
		INVERT ELEVATION
		LOW POINT
		LIGHT
		OVERFLOW
		PAVEMENT
		RAINWATER LEADER
		RIDGE
		RIM ELEVATION
		ROOF DRAIN
		STORM DRAIN JUNCTION BOX
		STORM DRAIN MANHOLE
		SWALE
		TOP OF BERM
		TOP OF CURB
		TOP OF WALL
		TRANSFORMER
		TRASH ENCLOSURE
		BIO-FILTRATION SWALE



LANDS OF DEPARTMENT OF FISH & GAME
2002-132615 OR

LANDS OF OLIVER PROPERTIES, LLC

WAREHOUSE
AREA: 113,730
FF: 10.50

LANDS OF
JON K TAKATA INVESTMENTS, LLC
PARCEL 6
TRACT NO. 4019

LANDS OF
STATE OF CALIFORNIA
PARCEL MAP 1042

NO.	BY	NO.	REVISION

KIER+WRIGHT
2850 Collier Canyon Road
Livermore, CA 94551
Phone: (925) 745-9288
www.kierwright.com

PRELIMINARY GRADING AND DRAINAGE PLAN
OF
4150 POINTE EDEN WAY
FOR
U-HAUL, INC.

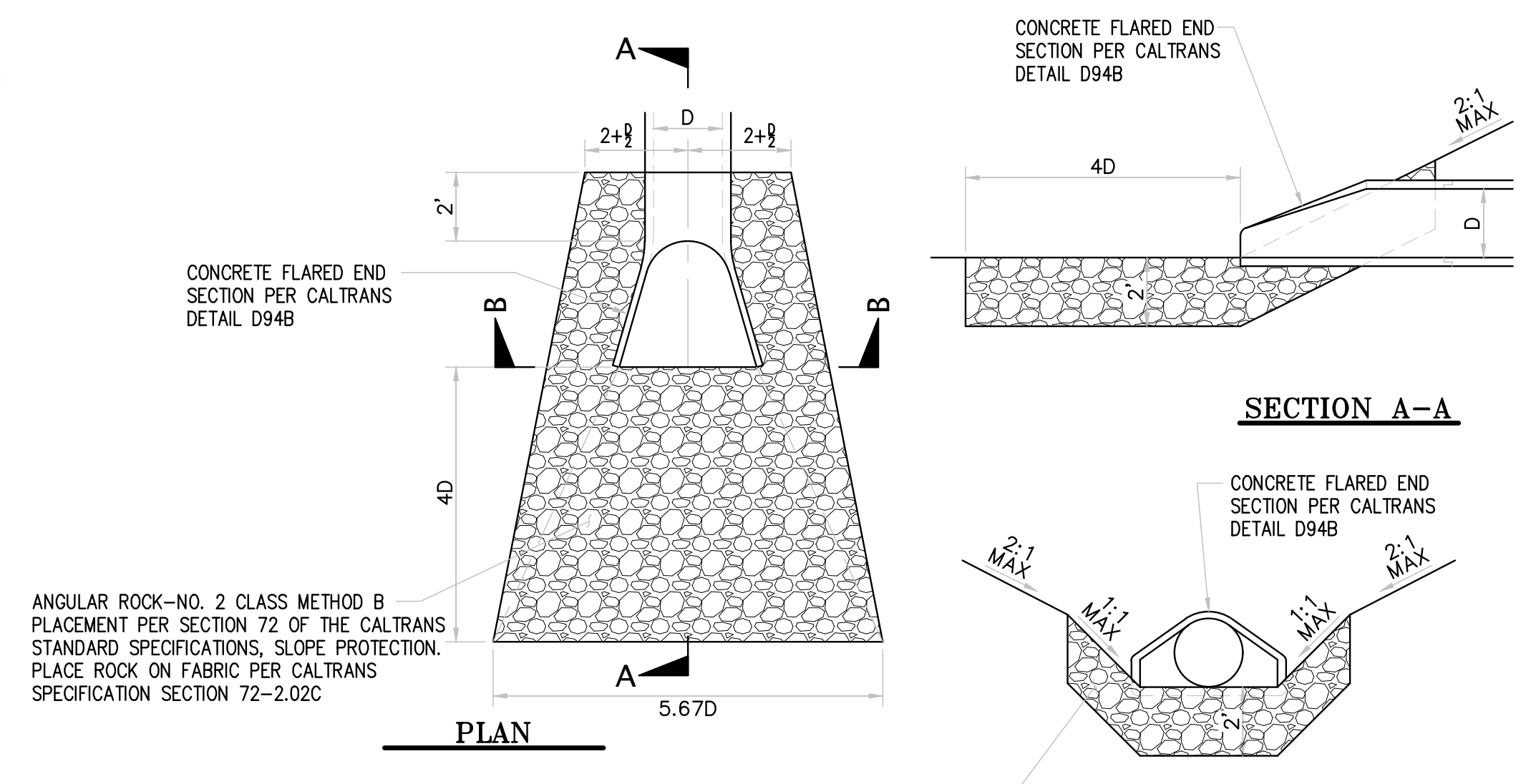
CALIFORNIA
HAYWARD.

DATE	APRIL, 2020
SCALE	1" = 40'
DESIGNER	KS/SS
DRAWN BY	TB/JTG
JOB NO.	A19640
SHEET	C2.0
OF	8 SHEETS

Z:\2019\A19640\DWG\CIVIL\A19640-CDS-CF.dwg 4-14-20 11:33:41 AM jgullentags

Catchbasin Insert, Full Capture Device

KS-1 Flo Gard Plus catchbasin filter Inserts, combination inlet style, stainless steel only (C3)
Drop in Basket



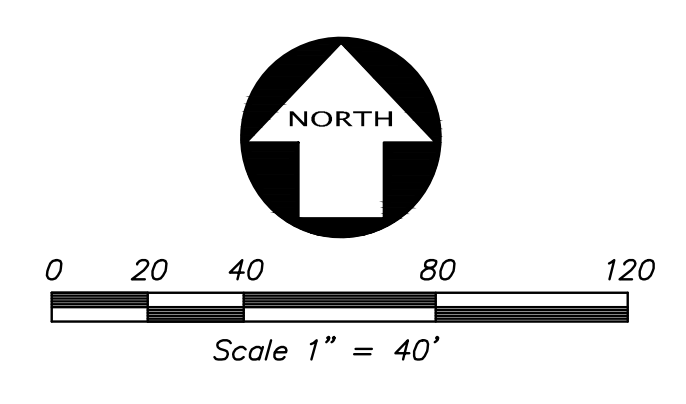
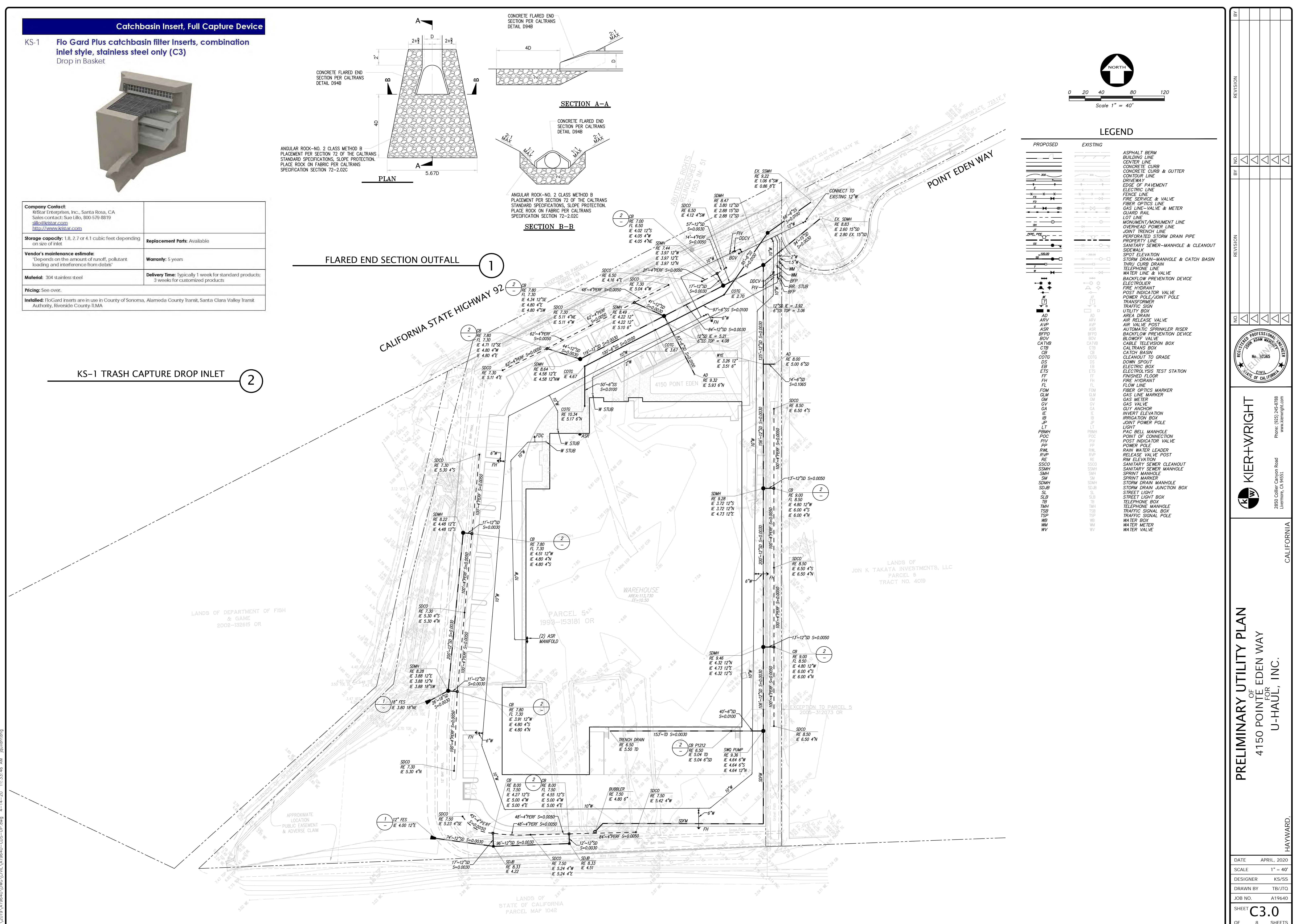
ANGULAR ROCK-NO. 2 CLASS METHOD B PLACEMENT PER SECTION 72 OF THE CALTRANS STANDARD SPECIFICATIONS, SLOPE PROTECTION. PLACE ROCK ON FABRIC PER CALTRANS SPECIFICATION SECTION 72-2.02C

ANGULAR ROCK-NO. 2 CLASS METHOD B PLACEMENT PER SECTION 72 OF THE CALTRANS STANDARD SPECIFICATIONS, SLOPE PROTECTION. PLACE ROCK ON FABRIC PER CALTRANS SPECIFICATION SECTION 72-2.02C

FLARED END SECTION OUTFALL

Company Contact: KriStar Enterprises, Inc., Santa Rosa, CA Sales contact: Sus Lillo, 800-579-8819 info@kristar.com http://www.kristar.com	Replacement Parts: Available
Storage capacity: 1.8, 2.7 or 4.1 cubic feet depending on size of inlet	Warranty: 5 years
Vendor's maintenance estimate: "Depends on the amount of runoff, pollutant loading and interference from debris"	Delivery Time: Typically 1 week for standard products; 3 weeks for customized products
Material: 304 stainless steel	Pricing: See over.
Installed: FloGard inserts are in use in County of Sonoma, Alameda County Transit, Santa Clara Valley Transit Authority, Riverside County-ILMA	

KS-1 TRASH CAPTURE DROP INLET



LEGEND

PROPOSED	EXISTING	DESCRIPTION
[Symbol]	[Symbol]	ASPHALT BERM
[Symbol]	[Symbol]	BUILDING LINE
[Symbol]	[Symbol]	CONCRETE CURB
[Symbol]	[Symbol]	CONCRETE CURB & GUTTER
[Symbol]	[Symbol]	CONTOUR LINE
[Symbol]	[Symbol]	DRIVEWAY
[Symbol]	[Symbol]	EDGE OF PAVEMENT
[Symbol]	[Symbol]	ELECTRIC LINE
[Symbol]	[Symbol]	FENCE LINE
[Symbol]	[Symbol]	FIRE SERVICE & VALVE
[Symbol]	[Symbol]	FIBER OPTICS LINE
[Symbol]	[Symbol]	GAS LINE-VALVE & METER
[Symbol]	[Symbol]	GUARD RAIL
[Symbol]	[Symbol]	LOT LINE
[Symbol]	[Symbol]	MONUMENT/MONUMENT LINE
[Symbol]	[Symbol]	OVERHEAD POWER LINE
[Symbol]	[Symbol]	JOINT TRENCH LINE
[Symbol]	[Symbol]	PERFORATED STORM DRAIN PIPE
[Symbol]	[Symbol]	PROPERTY LINE
[Symbol]	[Symbol]	SANITARY SEWER-MANHOLE & CLEANOUT
[Symbol]	[Symbol]	SIDEWALK
[Symbol]	[Symbol]	SPOT ELEVATION
[Symbol]	[Symbol]	STORM DRAIN-MANHOLE & CATCH BASIN
[Symbol]	[Symbol]	THRU CURB DRAIN
[Symbol]	[Symbol]	TELEPHONE LINE
[Symbol]	[Symbol]	WATER LINE & VALVE
[Symbol]	[Symbol]	BACKFLOW PREVENTION DEVICE
[Symbol]	[Symbol]	ELECTROLYTIC
[Symbol]	[Symbol]	FIRE HYDRANT
[Symbol]	[Symbol]	POST INDICATOR VALVE
[Symbol]	[Symbol]	POWER POLE/JUNCTION POLE
[Symbol]	[Symbol]	TRANSFORMER
[Symbol]	[Symbol]	TRAFFIC SIGN
[Symbol]	[Symbol]	UTILITY BOX
[Symbol]	[Symbol]	AREA DRAIN
[Symbol]	[Symbol]	AIR RELEASE VALVE
[Symbol]	[Symbol]	AIR VALVE POST
[Symbol]	[Symbol]	AUTOMATIC SPRINKLER RISER
[Symbol]	[Symbol]	BACKFLOW PREVENTION DEVICE
[Symbol]	[Symbol]	BLOWOFF VALVE
[Symbol]	[Symbol]	CABLE TELEVISION BOX
[Symbol]	[Symbol]	CATCH BASIN
[Symbol]	[Symbol]	CALTRANS BOX
[Symbol]	[Symbol]	CLEANOUT TO GRADE
[Symbol]	[Symbol]	DOWN SPOUT
[Symbol]	[Symbol]	ELECTRIC BOX
[Symbol]	[Symbol]	ELECTROLYSIS TEST STATION
[Symbol]	[Symbol]	FINISHED FLOOR
[Symbol]	[Symbol]	FIRE HYDRANT
[Symbol]	[Symbol]	FLOW LINE
[Symbol]	[Symbol]	FIBER OPTICS MARKER
[Symbol]	[Symbol]	GAS LINE MARKER
[Symbol]	[Symbol]	GAS METER
[Symbol]	[Symbol]	GAS VALVE
[Symbol]	[Symbol]	GUY ANCHOR
[Symbol]	[Symbol]	INVERT ELEVATION
[Symbol]	[Symbol]	IRRIGATION BOX
[Symbol]	[Symbol]	JOINT POWER POLE
[Symbol]	[Symbol]	LIGHT
[Symbol]	[Symbol]	PAC BELL MANHOLE
[Symbol]	[Symbol]	POINT OF CONNECTION
[Symbol]	[Symbol]	POST INDICATOR VALVE
[Symbol]	[Symbol]	POWER POLE
[Symbol]	[Symbol]	RAIN WATER LEADER
[Symbol]	[Symbol]	RELEASE VALVE POST
[Symbol]	[Symbol]	RIM ELEVATION
[Symbol]	[Symbol]	SANITARY SEWER CLEANOUT
[Symbol]	[Symbol]	SANITARY SEWER MANHOLE
[Symbol]	[Symbol]	SPRINT MANHOLE
[Symbol]	[Symbol]	SPRINT MARKER
[Symbol]	[Symbol]	STORM DRAIN MANHOLE
[Symbol]	[Symbol]	STORM DRAIN JUNCTION BOX
[Symbol]	[Symbol]	STREET LIGHT
[Symbol]	[Symbol]	STREET LIGHT BOX
[Symbol]	[Symbol]	TELEPHONE BOX
[Symbol]	[Symbol]	TELEPHONE MANHOLE
[Symbol]	[Symbol]	TRAFFIC SIGNAL BOX
[Symbol]	[Symbol]	TRAFFIC SIGNAL POLE
[Symbol]	[Symbol]	WATER BOX
[Symbol]	[Symbol]	WATER METER
[Symbol]	[Symbol]	WATER VALVE

NO.	BY	DATE	REVISION

KIER+WRIGHT
REGISTERED PROFESSIONAL ENGINEER
No. 32365
CIVIL
STATE OF CALIFORNIA

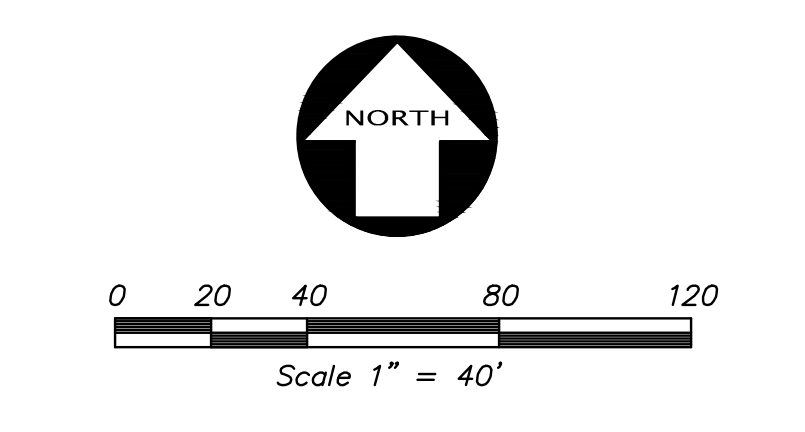
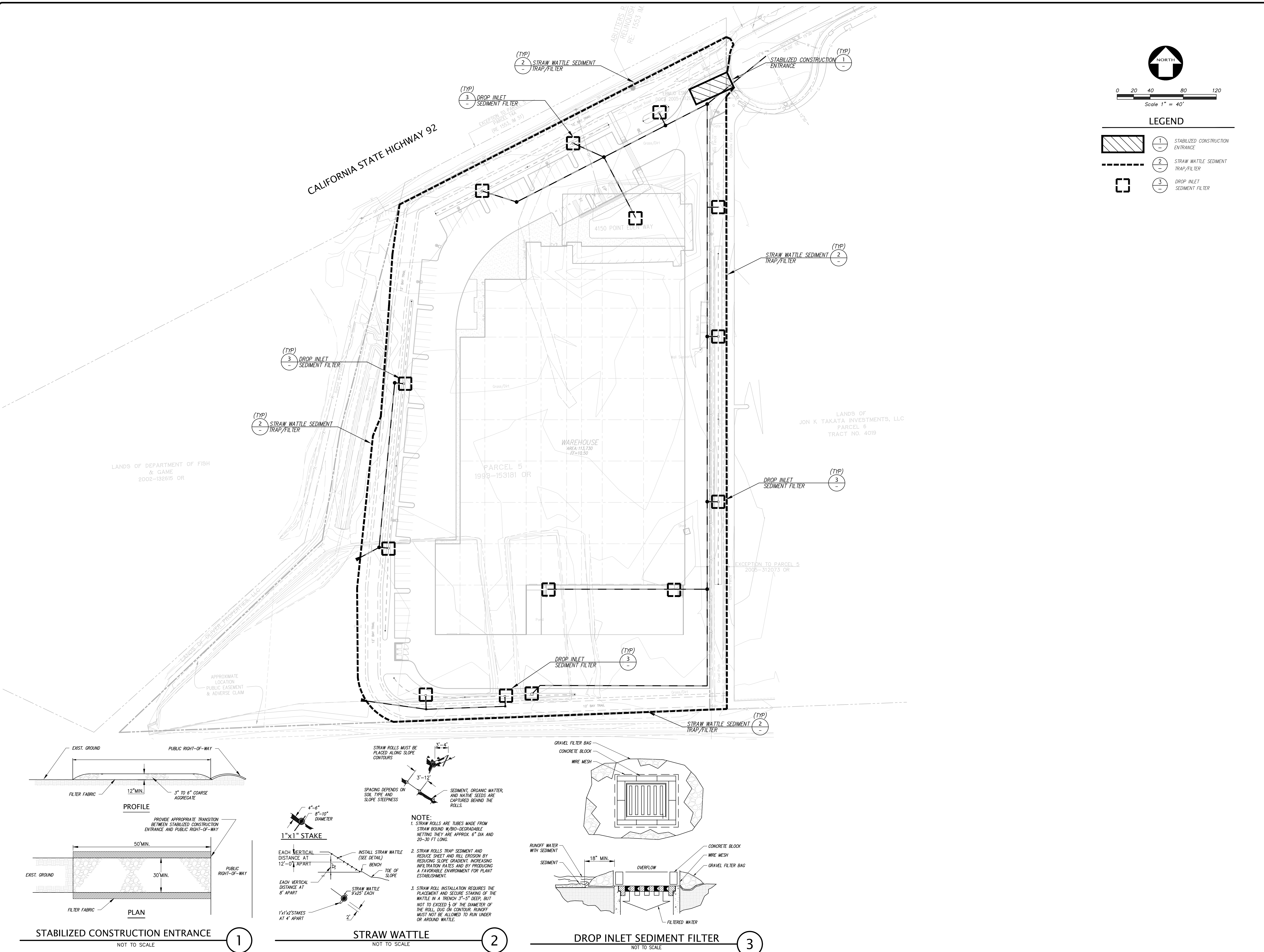
2850 Collier Canyon Road
Livermore, CA 94551
Phone: (925) 245-9788
www.kierwright.com

PRELIMINARY UTILITY PLAN
OF
4150 POINTE EDEN WAY
FOR
U-HAUL, INC.

CALIFORNIA
HAYWARD.

DATE	APRIL, 2020
SCALE	1" = 40'
DESIGNER	KS/SS
DRAWN BY	TB/JTG
JOB NO.	A19640
SHEET	C3.0
OF	8 SHEETS

Z:\2019\A19640\DWG\CIVIL\A19640-CDS-UP.dwg 4-14-20 11:33:46 AM jallanting



LEGEND

	1	STABILIZED CONSTRUCTION ENTRANCE
	2	STRAW WATTLE SEDIMENT TRAP/FILTER
	3	DROP INLET SEDIMENT FILTER

BY	BT
NO.	REVISION
NO.	REVISION
NO.	REVISION
NO.	REVISION

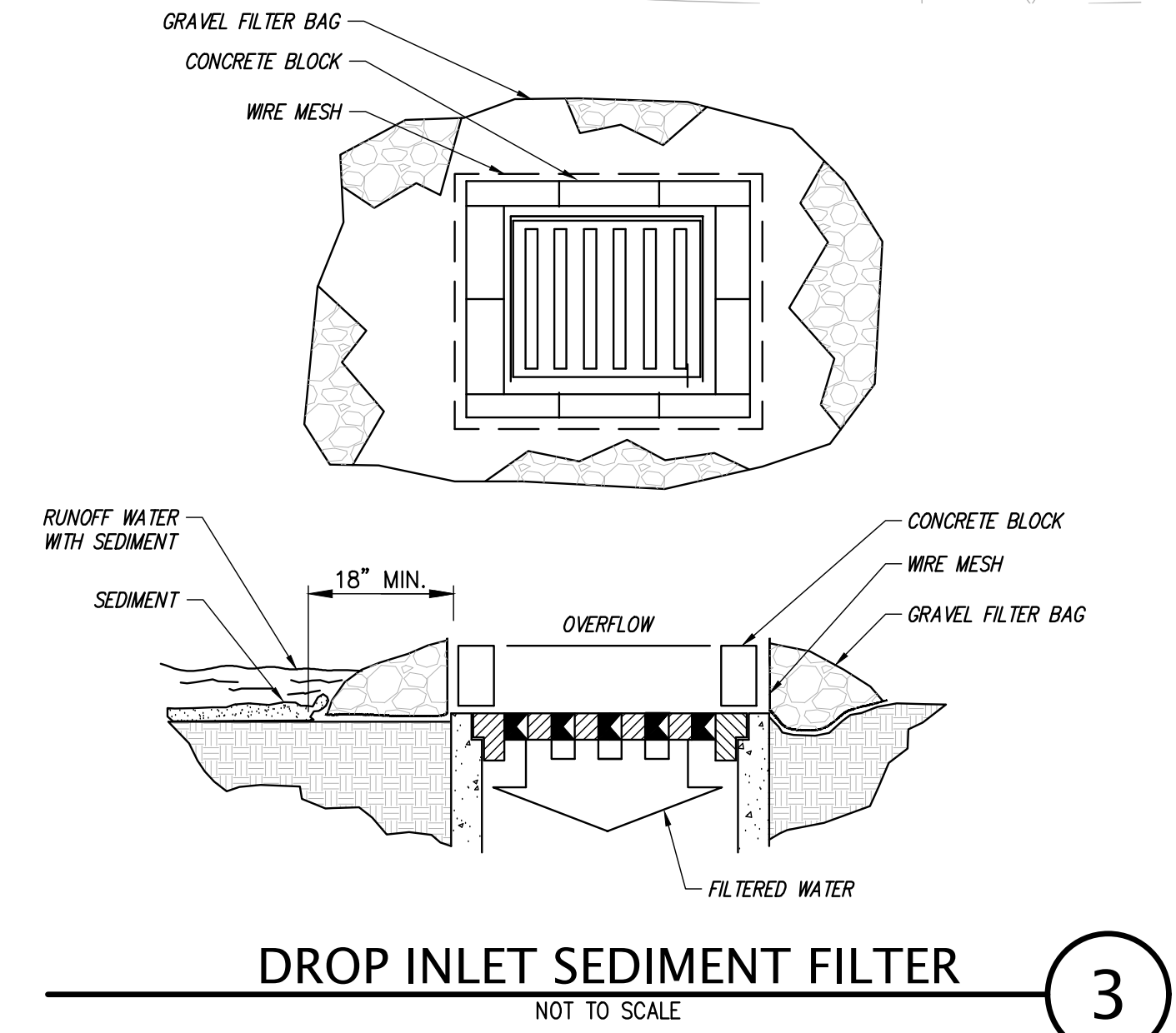
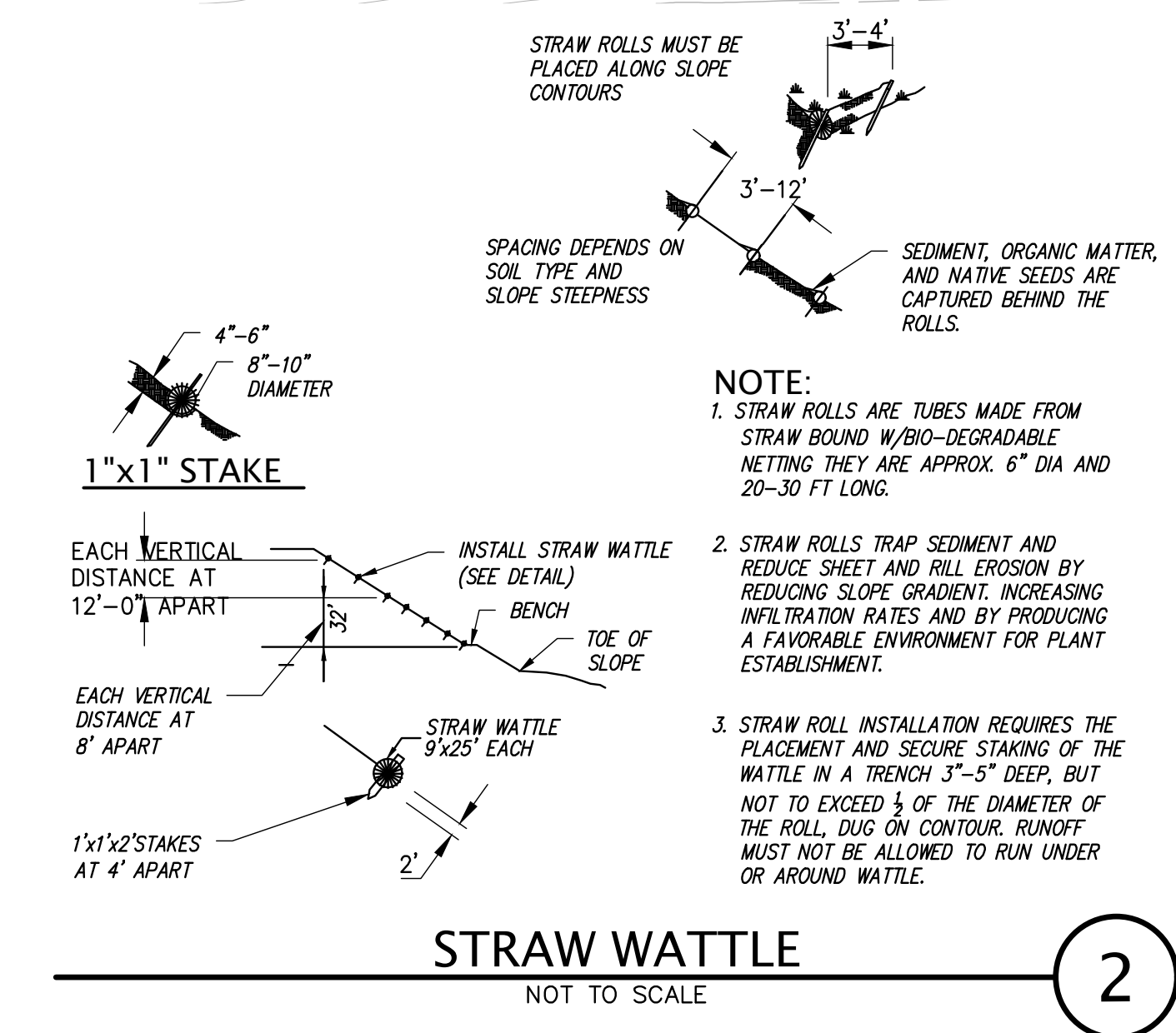
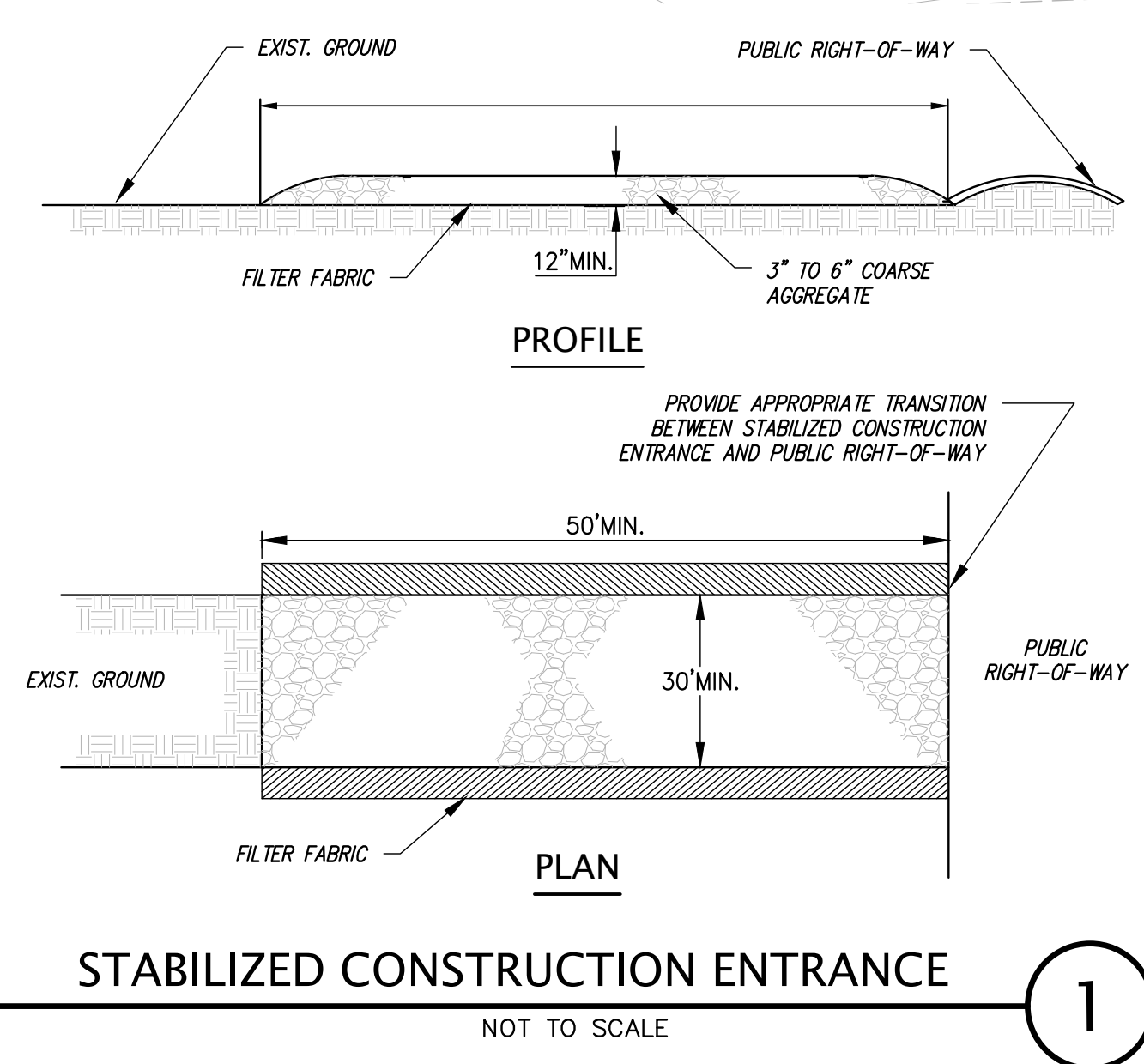
REGISTERED PROFESSIONAL ENGINEER
 JOHN ADAM HANFORD
 No. 23365
 CIVIL
 STATE OF CALIFORNIA

KIER+WRIGHT
 2850 Collier Canyon Road
 Livermore, CA 94551
 Phone: (925) 745-9788
 www.kierwright.com

EROSION CONTROL PLAN
 OF
 4150 POINTE EDEN WAY
 FOR
 U-HAUL, INC.

CALIFORNIA
 HAYWARD.

DATE	APRIL, 2020
SCALE	1" = 40'
DESIGNER	KS/SS
DRAWN BY	TB/JTG
JOB NO.	A19640
SHEET	C4.0
OF	8 SHEETS



Z:\2019\A19640\DWG\CIVIL\A19640-CDS-SUM.dwg 4-14-20 11:07:22 AM jullivan

