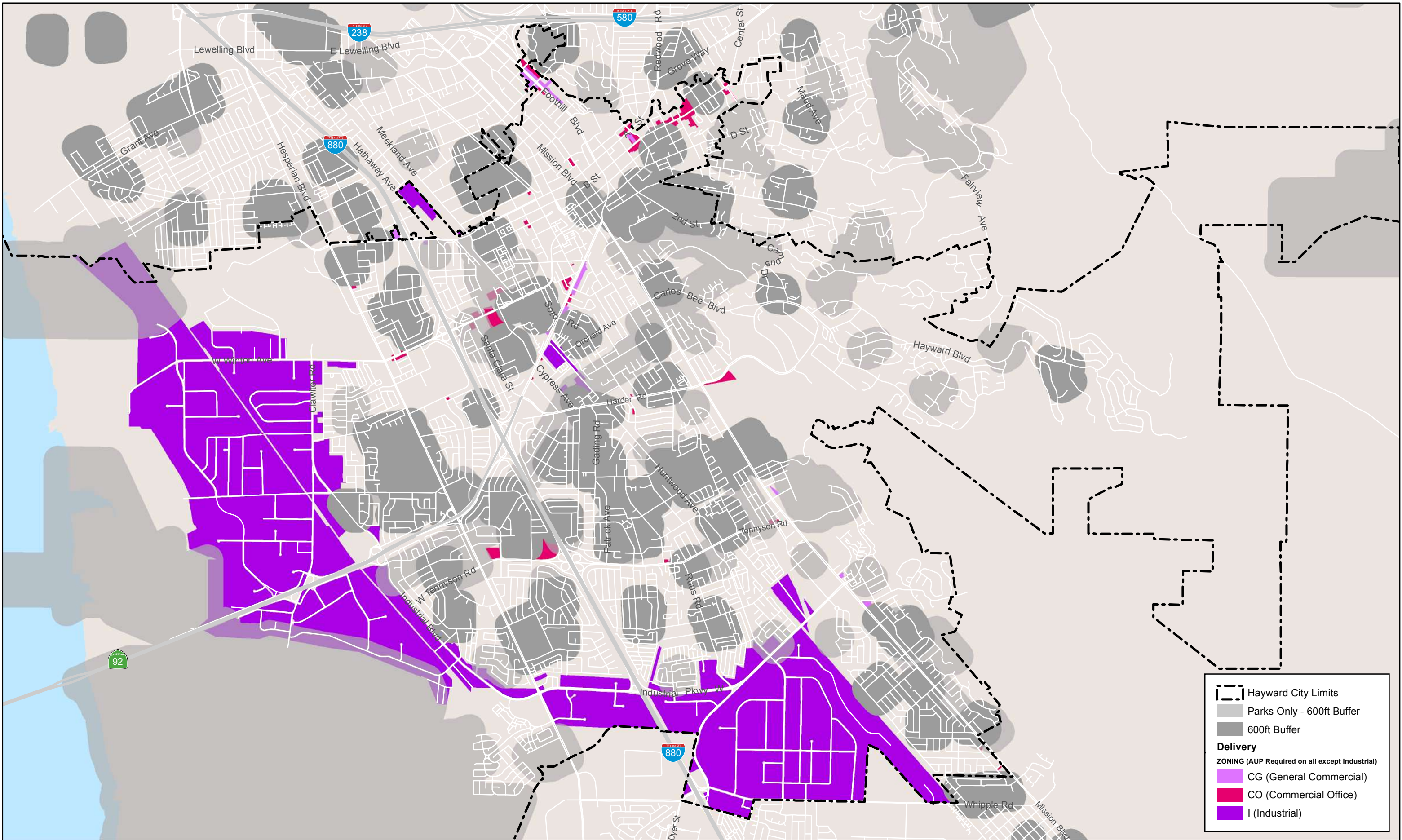


Note: Sensitive Receptors include libraries, community centers, public parks, recreation centers, youth centers, K-12 schools, and day care centers.

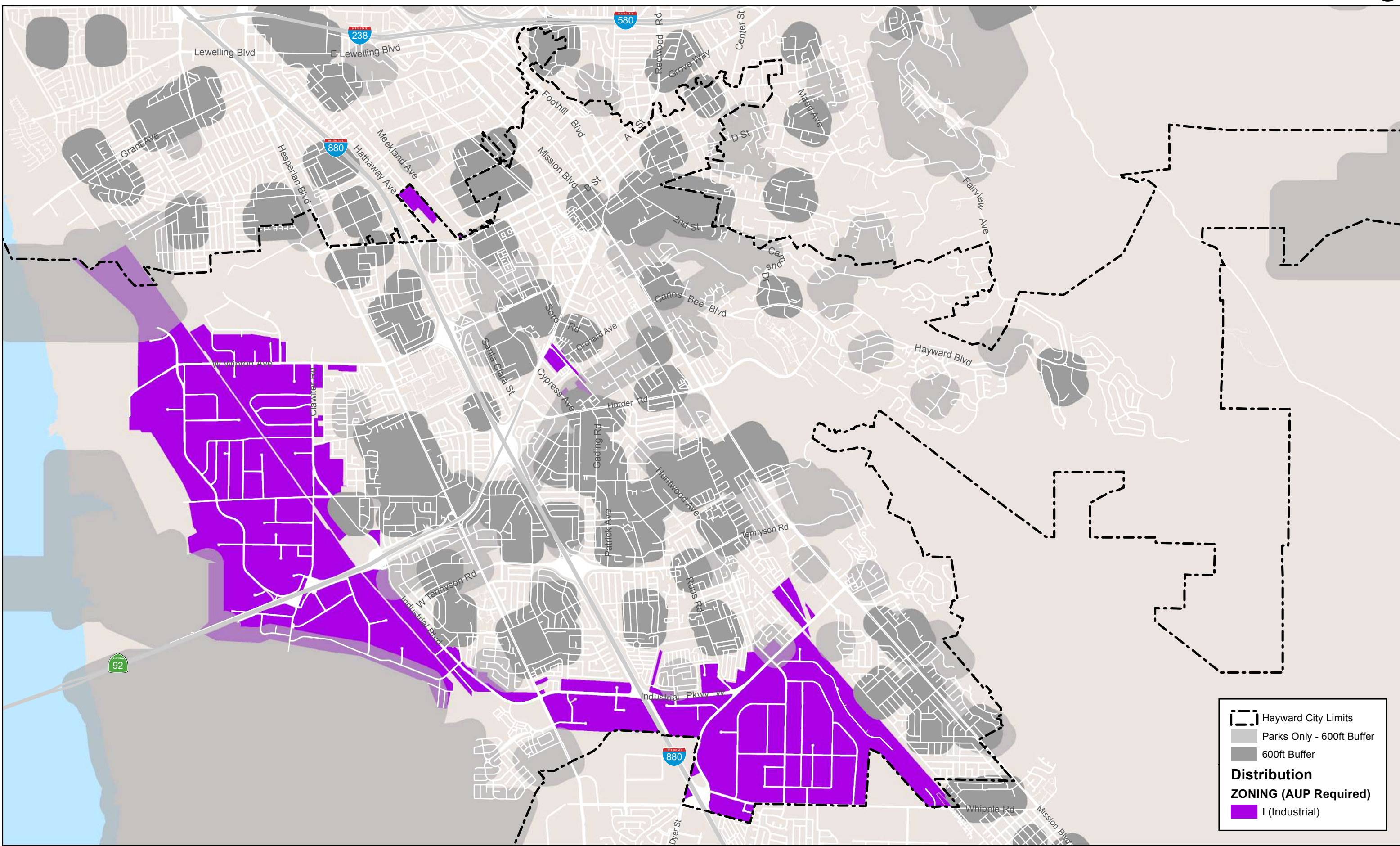
\*Entitlement process depends on the size of the cultivation operation.



# Commercial Cannabis Delivery – Zoning Districts



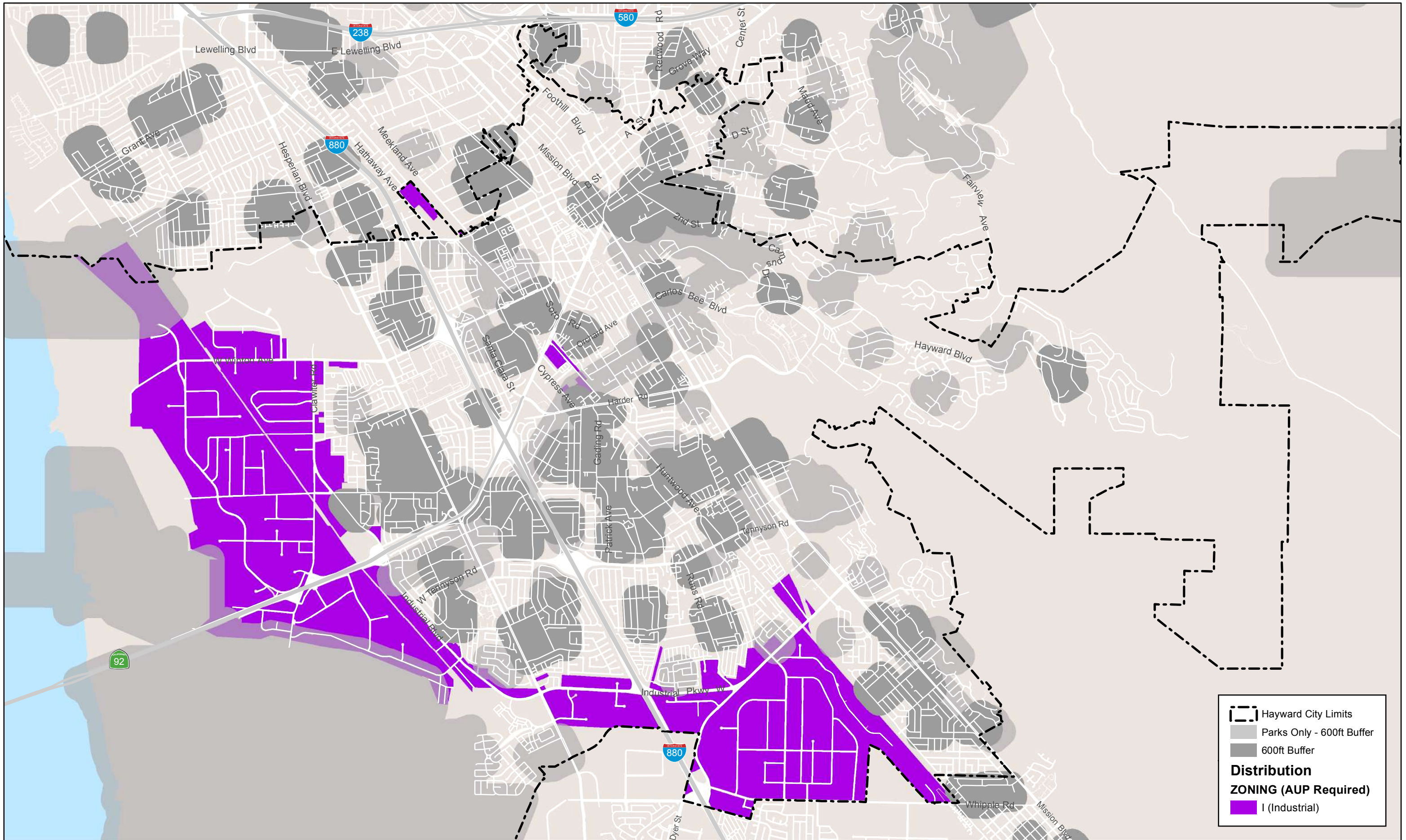
Note: Sensitive Receptors include libraries, community centers, public parks, recreation centers, youth centers, K-12 schools, and day care centers. For the purposes of land use classification, this land use is similar in nature to other Administrative and Professional Offices/Services November 2017



Note: Sensitive Receptors include libraries, community centers, public parks, recreation centers, youth centers, K-12 schools, and day care centers.



# Commercial Cannabis Manufacturing (Level 1\*) – Zoning Districts



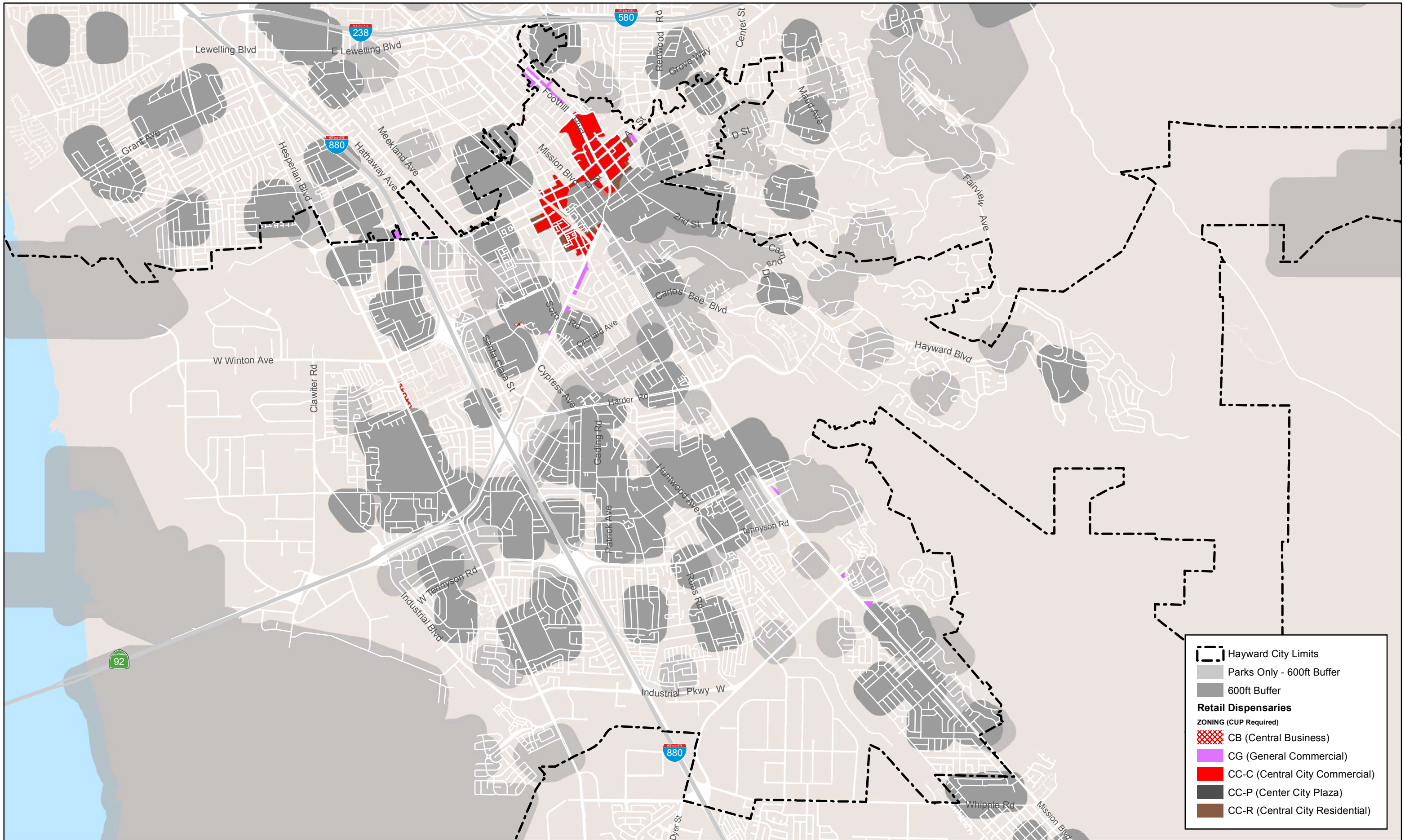
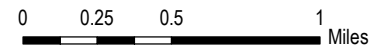
Hayward City Limits  
 Parks Only - 600ft Buffer  
 600ft Buffer  
**Distribution ZONING (AUP Required)**  
 I (Industrial)

Note: Sensitive Receptors include libraries, community centers, public parks, recreation centers, youth centers, K-12 schools, and day care centers.

\*Level 2 manufacturing (using volatile substances) is prohibited



# Commercial Cannabis Retail Dispensaries – Zoning Districts



Hayward City Limits

Parks Only - 600ft Buffer

600ft Buffer

**Retail Dispensaries**

**ZONING (CUP Required)**

CB (Central Business)

CG (General Commercial)

CC-C (Central City Commercial)

CC-P (Center City Plaza)

CC-R (Central City Residential)

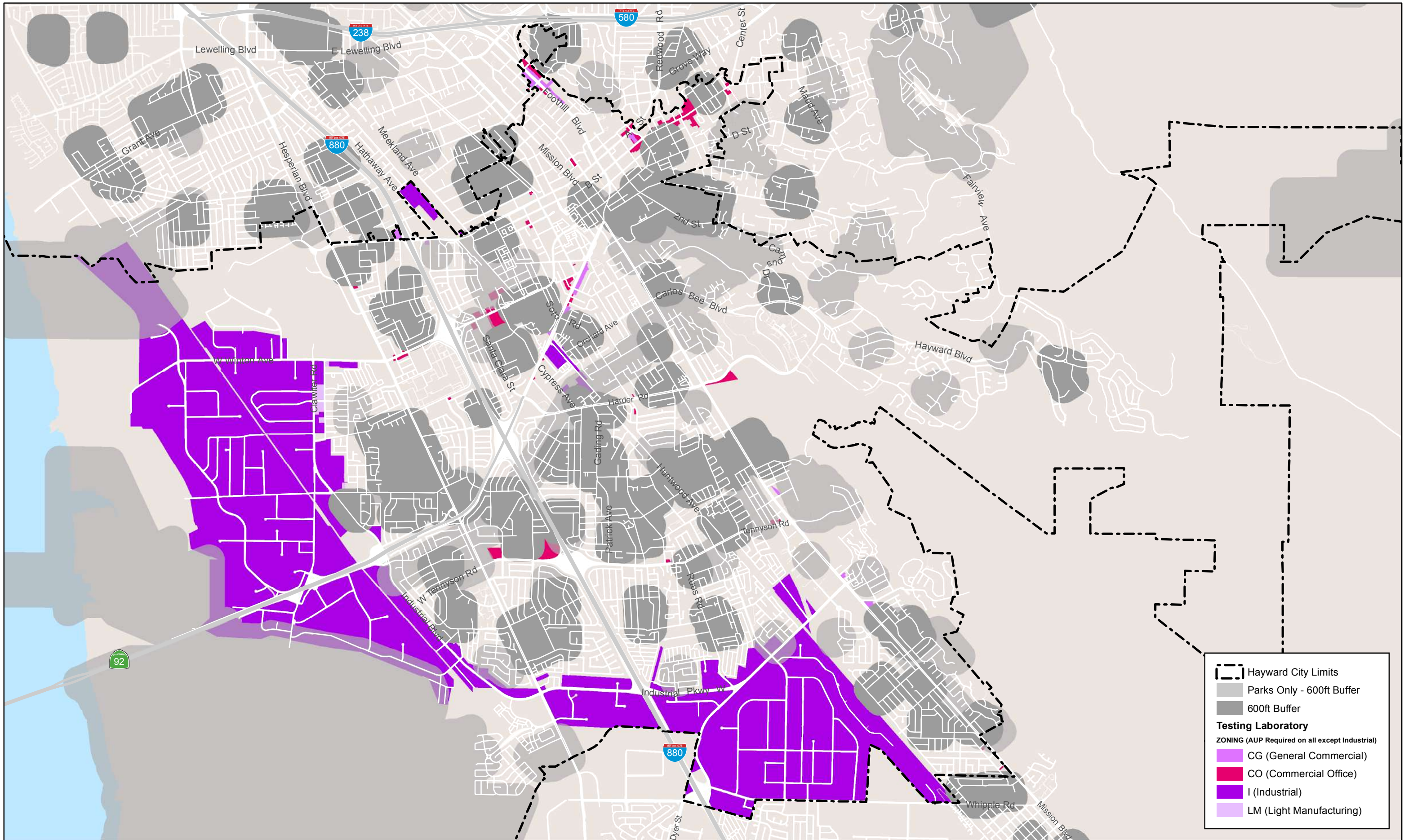
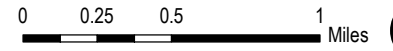
Note: Sensitive Receptors include libraries, community centers, public parks, recreation centers, youth centers, K-12 schools, and day care centers.

Small retail component allowed in Industrial zones, subject to provisions of Section 10-1.3606(H). See Cultivation or Distribution maps for Industrial zones.

November 2017



# Commercial Cannabis Testing Laboratory – Zoning Districts



**Legend**

- Hayward City Limits
- Parks Only - 600ft Buffer
- 600ft Buffer
- Testing Laboratory**
- ZONING (AUP Required on all except Industrial)**
- CG (General Commercial)
- CO (Commercial Office)
- I (Industrial)
- LM (Light Manufacturing)

Note: Sensitive Receptors include libraries, community centers, public parks, recreation centers, youth centers, K-12 schools, and day care centers.

For the purposes of land use classification, this land use is similar to other Medical/Dental Laboratories November 2017