

- CONTRACTOR IS RESPONSIBLE FOR ENSURING APPROPRIATE CLEARANCE BETWEEN WORKING EQUIPMENT AND OVERHEAD LINES PER OSHA, CAL-OSHA, AND CALIFORNIA PUC GUIDELINES AND REQUIREMENTS.
- THIS PLAN IS PROVIDED TO DEPICT THE GENERAL LAYOUT OF THE POTABLE WATER SYSTEM, SANITARY SEWER SYSTEM, AND STORM DRAINAGE SYSTEM ONLY. SEE APPROPRIATE PLAN SHEETS FOR DETAILED DESIGN INFORMATION FOR THIS SYSTEM.
- EXISTING WATER SERVICE ON PROJECT SITE IDENTIFIED DURING CONSTRUCTION TO BE ABANDONED BY CITY FORCES
- UNKNOWN UNDERGROUND UTILITIES MAY BE PRESENT WITHIN THE PROJECT. CONTRACTOR TO VERIFY TYPE, SIZE, LOCATION, AND DEPTH PRIOR TO CONSTRUCTION AND COORDINATE WITH THE CITY ENGINEER. CONTRACTOR TO PROVIDE DESIGN ENGINEER 5 WORKING DAYS TIME TO MAKE ANY REVISIONS TO THE PLANS.

NOTE

1. ALL PROPOSED WATER MAIN OFFSETS TO BE MADE USING DUCTILE IRON PIPE AND PIPE FITTINGS.
2. ALL DOMESTIC AND IRRIGATION WATER METERS SHALL BE PROTECTED WITH AN ABOVE-GROUND REDUCED-PRESSURE (RP) BACKFLOW PREVENTION ASSEMBLY, PER CITY OF HAWAII STANDARD DETAIL 202 (SD-202).
3. ALL FIRE SERVICES SHALL HAVE AN ABOVE-GROUND DOUBLE-CHECK VALVE ASSEMBLY PER CITY OF HAWAII STANDARD DETAIL 201 (SD-201).
4. ALL SEWER MAINS AND APPURTENANCES SHALL BE CONSTRUCTED IN ACCORDANCE TO THE CITY'S "SPECIFICATIONS FOR THE CONSTRUCTION OF SEWER MAINS AND APPURTENANCES (12" DIAMETER OR LESS)" LATEST REVISION AT THE TIME OF PERMIT APPROVAL.
5. SEWER CLEANSOUTS SHALL BE INSTALLED ON EACH SEWER LATERAL AT THE CONNECTION WITH THE BUILDING DRAIN, AT ANY CHANGE IN ALIGNMENT, AND AT MINIMUM INTERVALS NOT EXCEEDING 100 FEET. MANHOLES SHALL BE INSTALLED IN THE SEWER MAIN AT ANY CHANGE IN DIRECTION OR GRADE, AT INTERVALS NOT TO EXCEED 400 FEET, AND AT THE UPSTREAM END OF THE PIPELINE.

NOTE: CONTRACTOR TO VERIFY THE QUANTITIES PART TO BID

LA VISTA PARK FUTURE PROJECT

PG&E EASEMENT

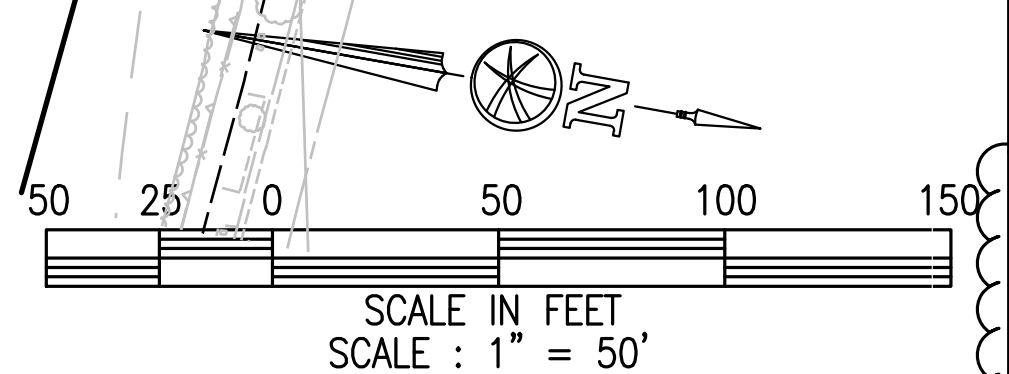
LA VISTA RESIDENTIAL PROJECT




**FUTURE SLOPE
KEYWAY**

RESIDENTIAL

SCHOOL

TENNYSON RD



<div>C3.0</div>	UTILITY PLAN		CITY OF HAYWARD ALAMEDA COUNTY CALIFORNIA		<div></div>	10/13/23 DATE WH, WT DRAWN BY SB CHECKED BY		<div>Bellecci & Associates, inc.</div> <div>CivilEngineering • LandSurveying 2290 Diamond Boulevard, Suite 100 Concord, CA 94520 Phone (925) 685-4569 Fax (925) 685-4838</div>		1 WH 09/12/2023 FOR DESG. OF REVISIONS UNDER TRIANGLE 1 2 WH 10/13/2023 SHEET NUMBERING FORMAT UPDATED		10/23/23	10/23/23
	JOB NO. 18133		NO BY DATE			REVISIONS		DATE	BY	APPROVAL			