

Vicinity Map



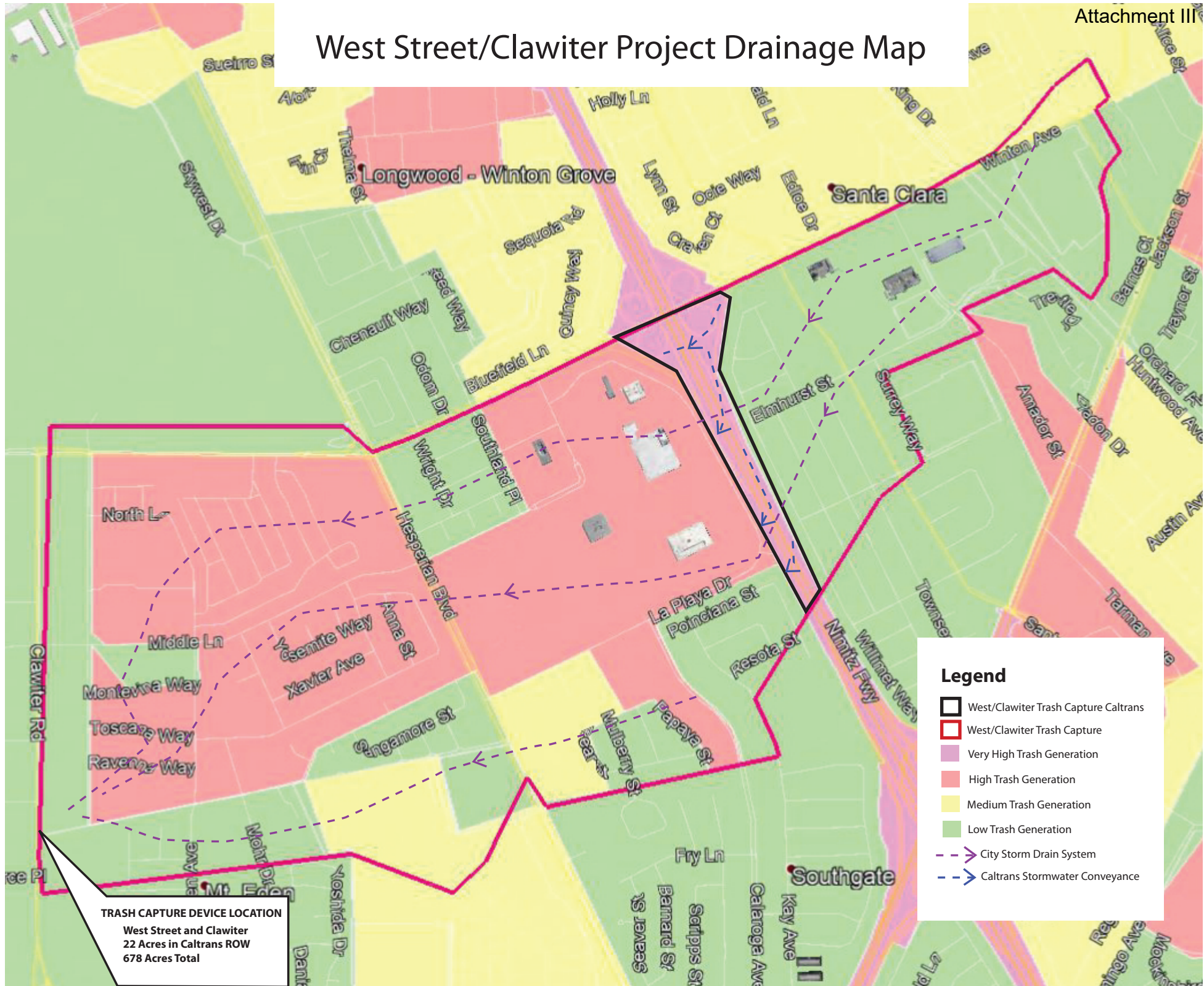
City of Hayward, Alameda County

BMP Locations List and Performance Measures Table:

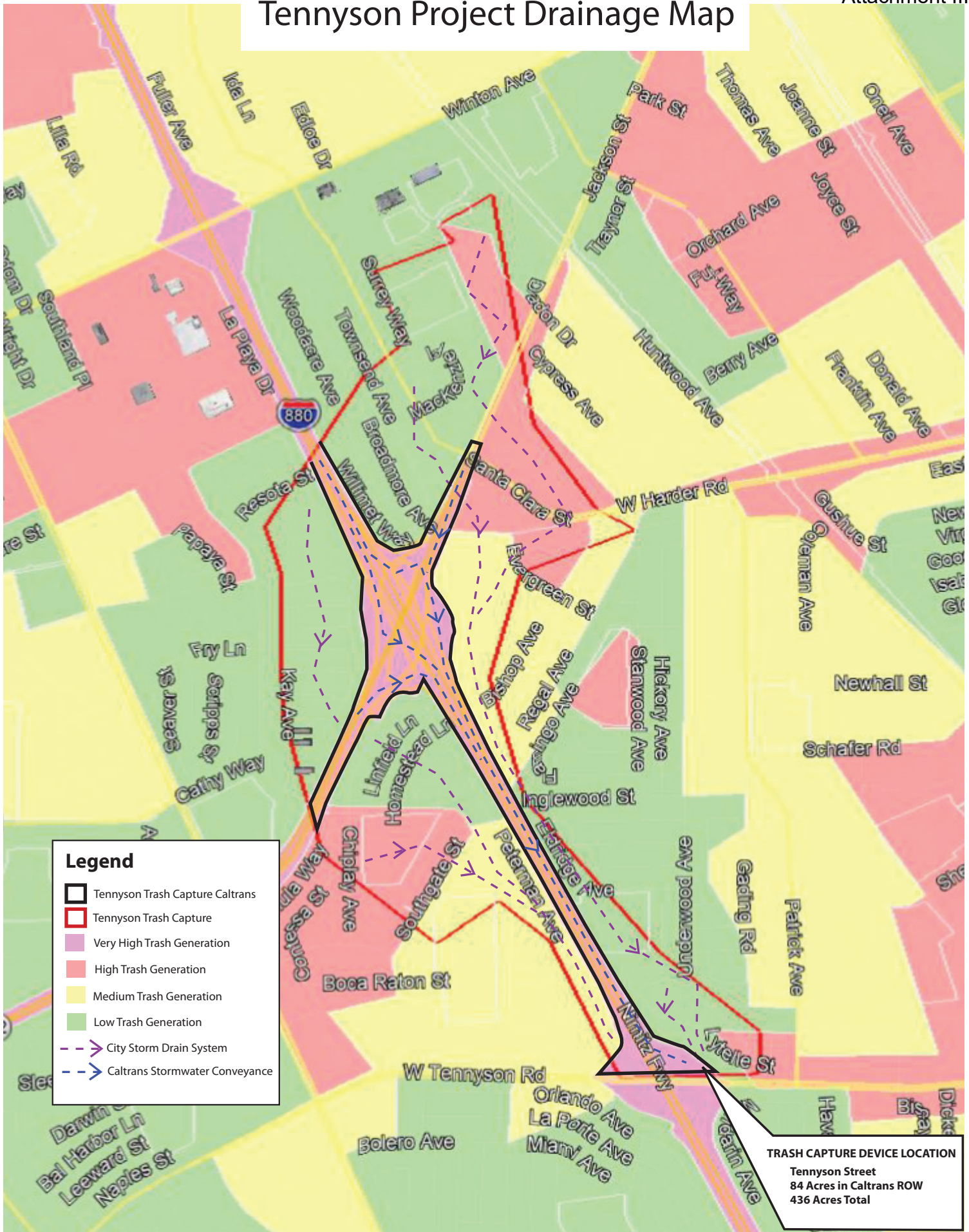
Site #	BMP Location(s)	Referenced to Caltrans Post Mile	Total Tributary Drainage Area (acres)	Caltrans Tributary Drainage Area (acres)	Compliance Units (TMDL)*	Full Trash Capture Credits	Best Management Practice (BMP)	Estimated Construction Cost (\$)
1	West Street in Hayward	ALA-92-R4.95	678.0	22.0	8.3	22.0	Continuous Deflective System Device	\$ 731,500
2	W Tennyson Road in Hayward	ALA-880-15.51	436.0	84.0	8.3	84.0	Continuous Deflective System Device	\$ 731,500
3	Folsom Avenue in Hayward	A-880-15.05	141.0	21.0	4.3	21	Continuous Deflective System Device	\$ 378,000
Total:			1255.0	127.0	20.9	127.0		\$ 1,841,000

*TMDL Compliance Units is calculated based on the total anticipated construction cost divided by \$88,000 as mandated in the permit agreement.

West Street/Clawiter Project Drainage Map



Tennyson Project Drainage Map



Legend

- Tennyson Trash Capture Caltrans
- Tennyson Trash Capture
- Very High Trash Generation
- High Trash Generation
- Medium Trash Generation
- Low Trash Generation
- City Storm Drain System
- Caltrans Stormwater Conveyance

TRASH CAPTURE DEVICE LOCATION
 Tennyson Street
 84 Acres in Caltrans ROW
 436 Acres Total

Folsom Project Drainage Map

