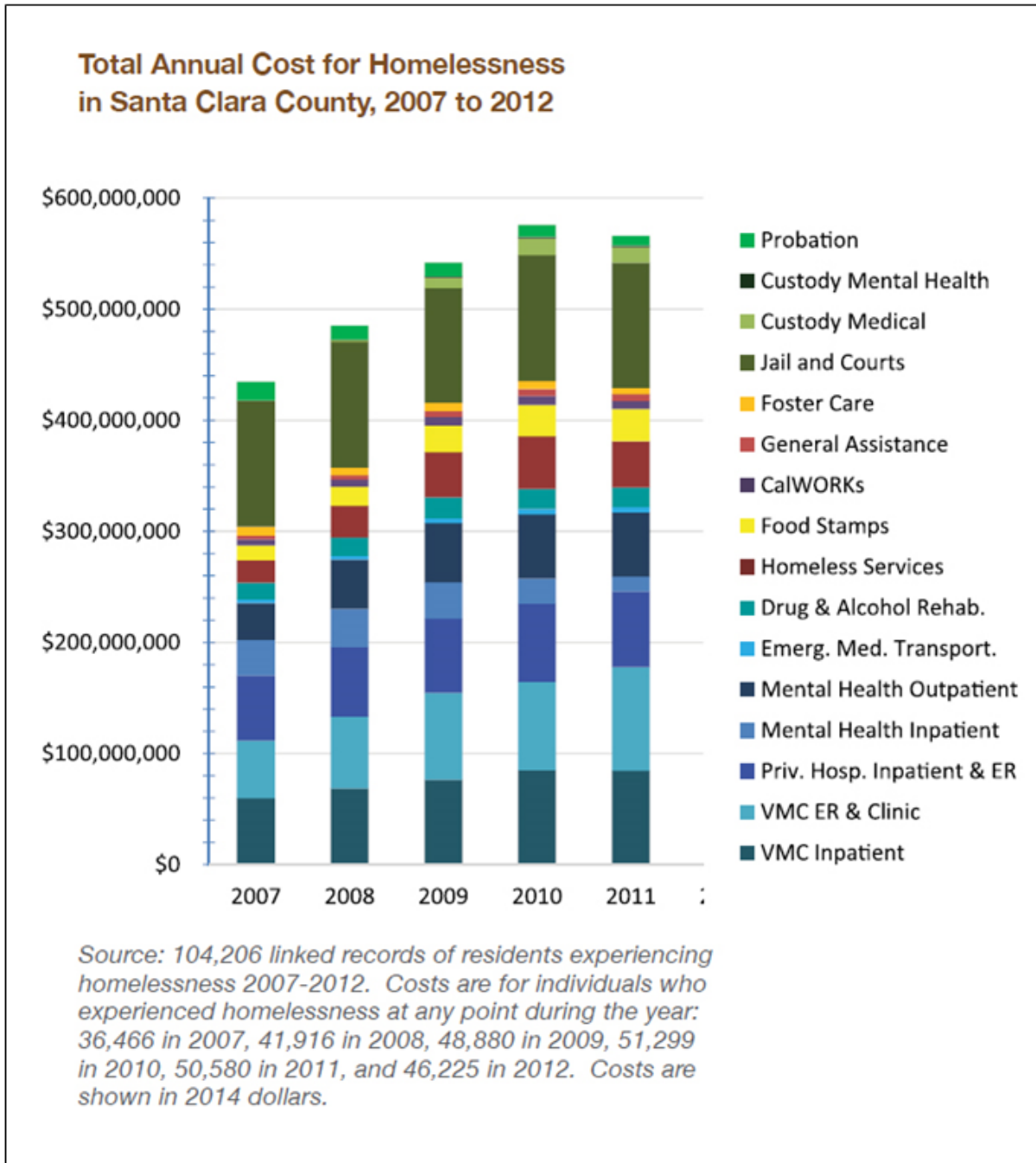


Figure 1. Total service-related cost for homelessness in Santa Clara County.

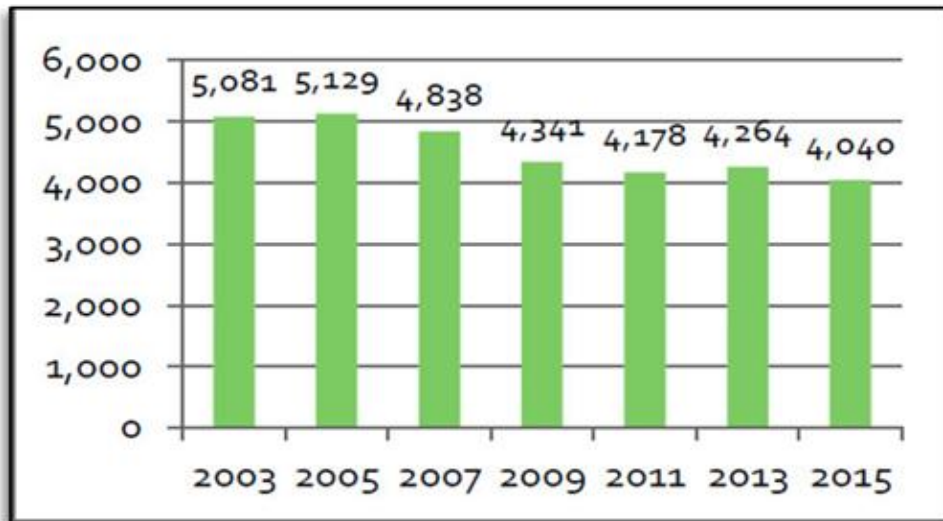


Substance abuse and mental illness double the likelihood of being and staying in the top 5% of the most cost-intensive recipients of services, with odds two and a half times greater than average for people with both of these attributes. Transitional aged youth are particularly at risk for entering the top 5% of service users. Four-fifths of youth who age out of foster care and experience homelessness have diagnosed mental disorders and 65% are involved with the justice system. Youth with both attributes are at high risk of having public costs in the top 5%. Report authors advocate more effective support for foster youth to achieve a successful transition into adulthood.

Figure 2. Hayward AC Impact Comparative Cost Analysis: Six Month Costs, 2014

Six Month Costs Homeless	
Police Citations	202.50
Police Arrests	3,159.00
Fire Dispatches	1,525.32
Emergency Medical Services Transport (Ambulance)	15,200.00
Medical Services and Discharge	114,000.00
Hayward Police Detention Bookings	10,962.90
Overnight Jail Stays	7,488.00
Total Six Month Costs Homeless	\$ 152,537.72
Six Month Costs Housed	
HUD Housing Subsidy	6,491.40
Case Management and Support Services	2,268.60
Total Six Month Costs Housed	\$ 8,760.00
TOTAL SIX MONTH COST SAVINGS	\$ 143,777.72

Figure 3. Total estimated number of homeless individuals in Alameda County by year.



The 2015 Point-in-Time Count, the homeless housing inventory, and HMIS data suggest decreases of homeless sub-populations for whom the community has invested resources and efforts:

Figure 4. Total estimated individuals in key homeless subpopulations.

Key Homeless Subpopulation Estimates Lower			
	Veterans	Families	Chronic
2013	492	462	931
2015	388	324	660

Figure 5. Food Access Locations in Hayward*

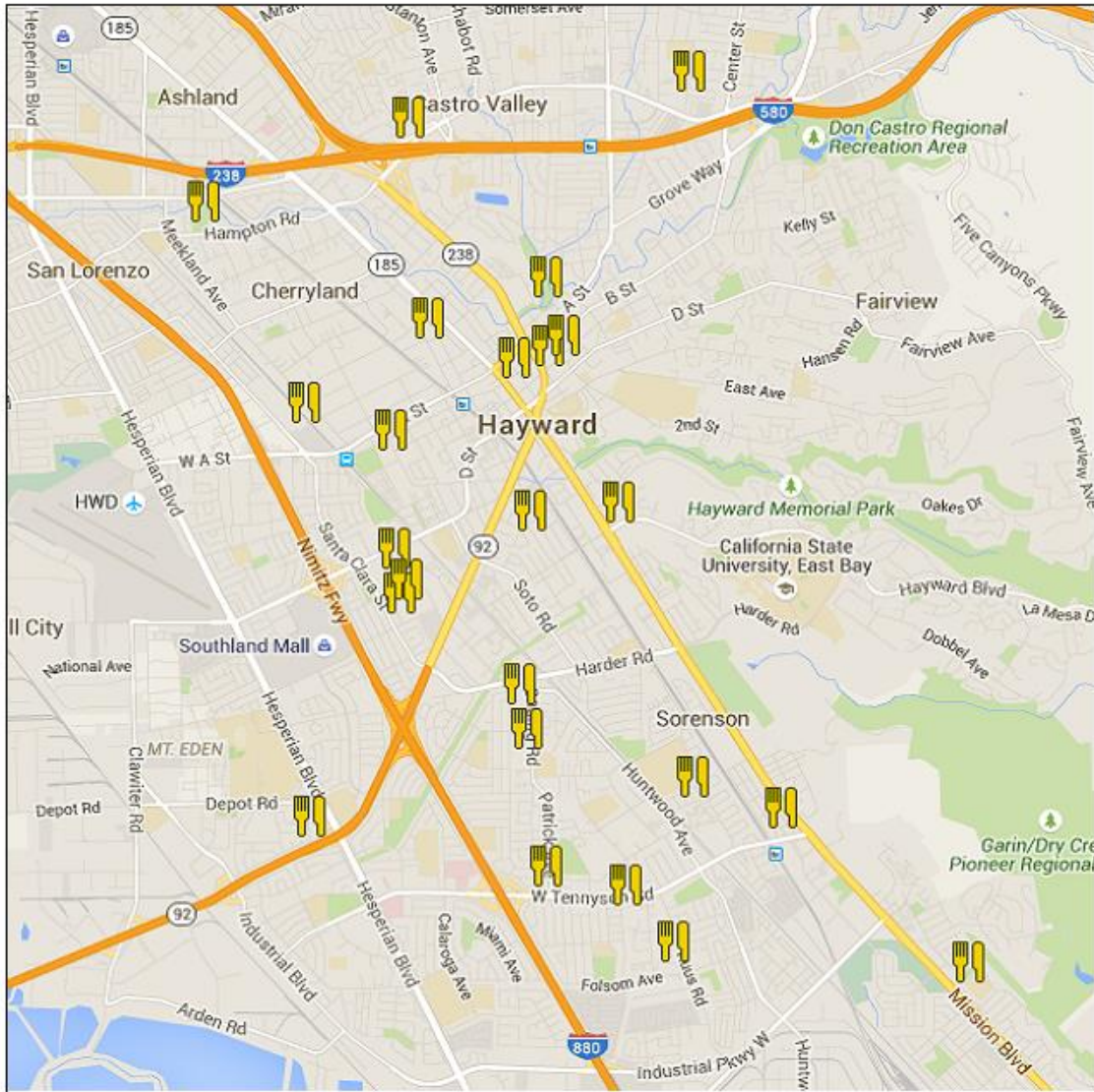


Figure 6. Support services in the Hayward area (including medical/dental, legal consultation and advocacy, counseling and mental health, services for individuals seeking sobriety, and shower access)

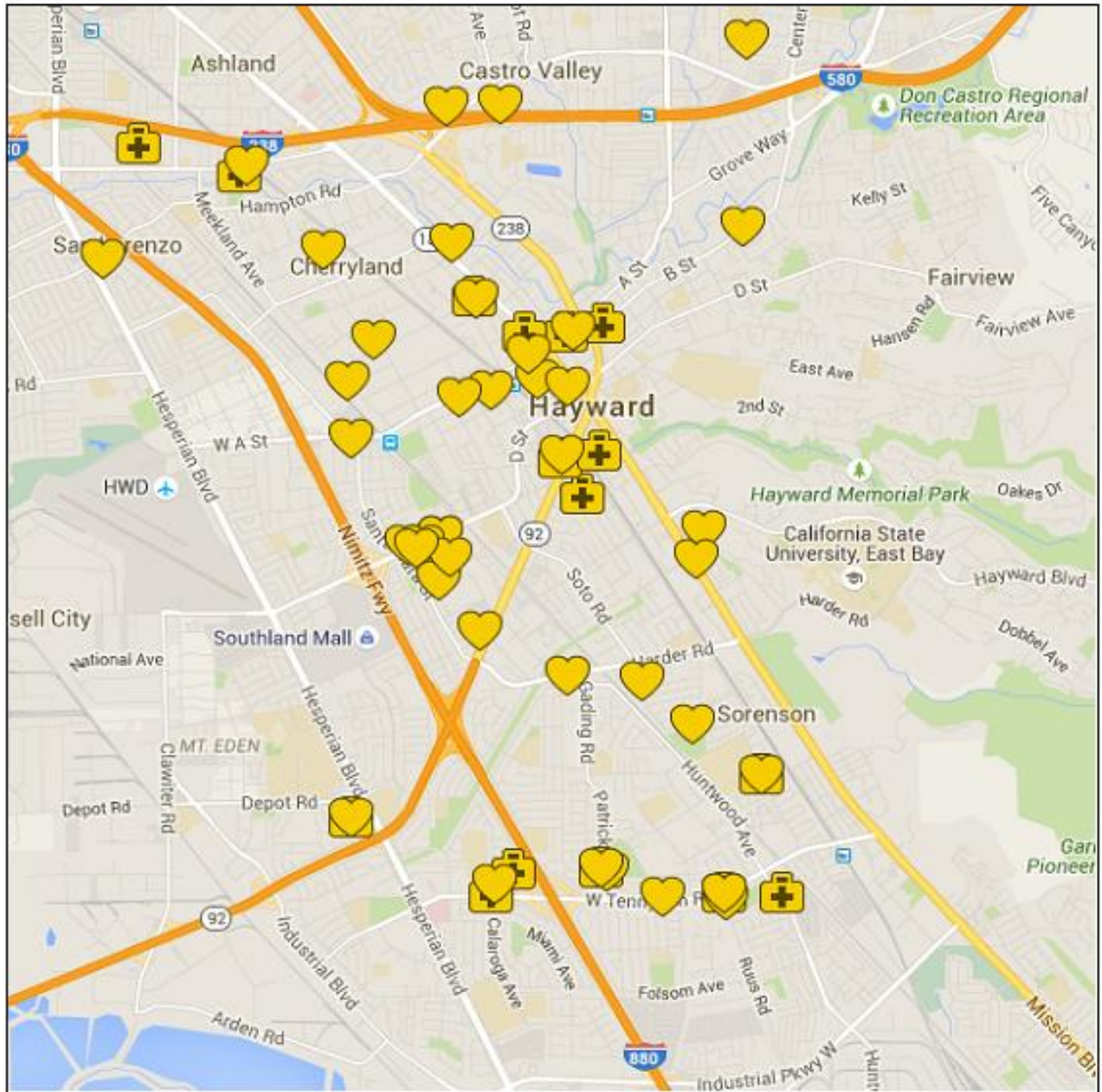


Figure 7. Public and Private/Commercial Restrooms in the Hayward Area*

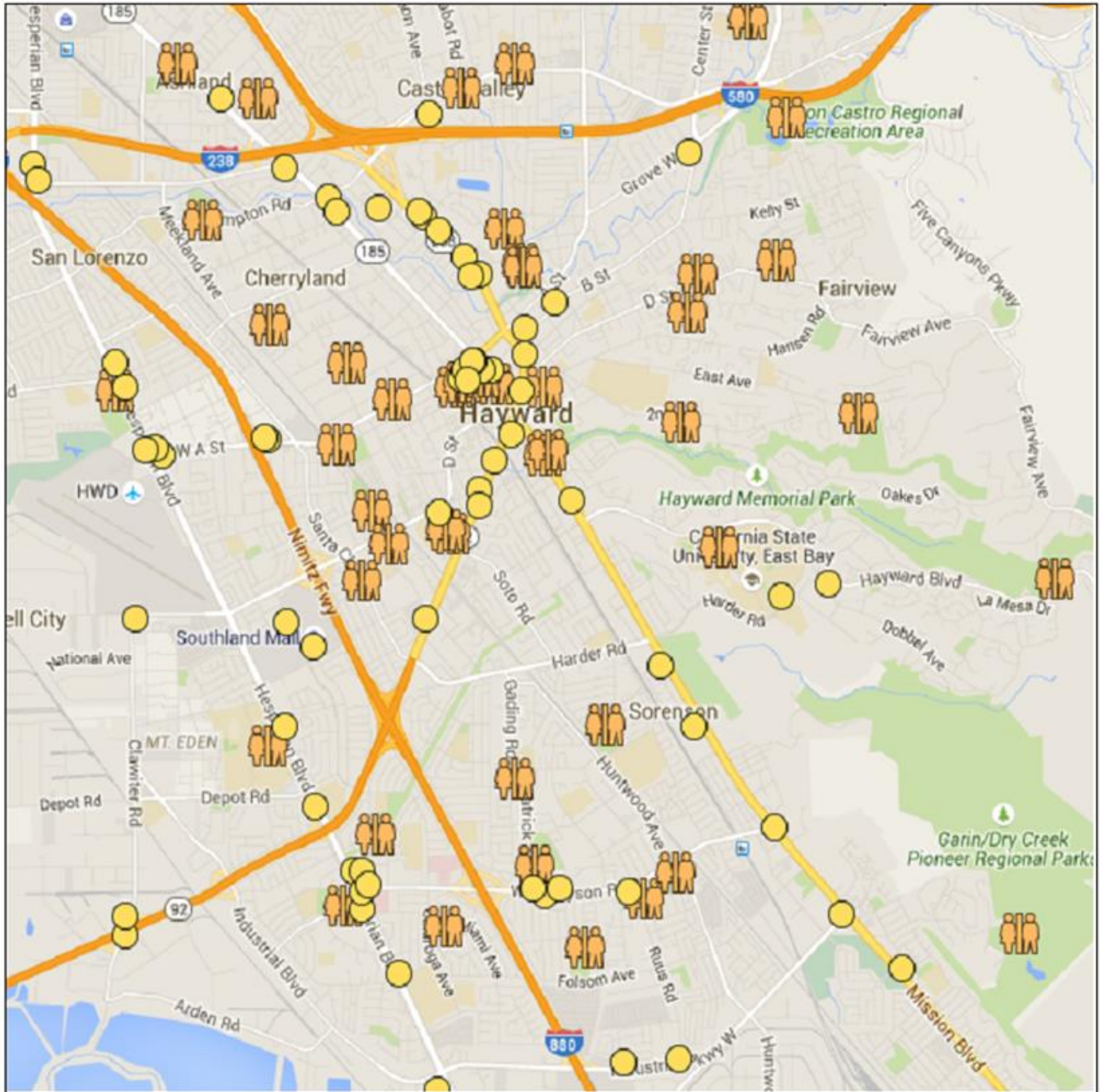


Figure 8. Estimated homeless population in Hayward, Mid-Country and Alameda County

