

Zoning District Summary – Cannabis Businesses

P	Permitted Use
AUP	Administrative Use Permit
CUP	Conditional Use Permit

Commercial Cannabis Cultivation

**Entitlement process depends on the size of the proposed cultivation operation*

AUP or CUP*	Industrial (I)
-------------	----------------

Commercial Cannabis Retail Dispensaries

**Small retail component allowed, subject to provisions of Section 10-1.3606(H)*

CUP	Neighborhood Commercial (CN)
CUP	Neighborhood Commercial – Residential District (CN - R)
CUP	General Commercial (CG)
CUP	Central Business District (CB)
CUP	Central City – Commercial Subdistrict (CC-C)
CUP	Central City – Residential Subdistrict (CC-R)
CUP	Central City – Plaza Subdistrict (CC-P)
CUP	South Hayward/Mission FBC (T4 & T5 Zones)
CUP	Hayward Mission Blvd FBC (T4-1, T4-2 and T5 Zones)
CUP*	Industrial

Commercial Cannabis Distribution

AUP	Industrial (I)
-----	----------------

Commercial Cannabis Manufacturing (Level 1)

Level 2 Manufacturing (Using Volatile Substances) is prohibited

CUP	Industrial (I)
-----	----------------

Commercial Cannabis Testing Laboratory

For the purposes of land use classification, this land use is similar to other Medical/Dental Laboratories

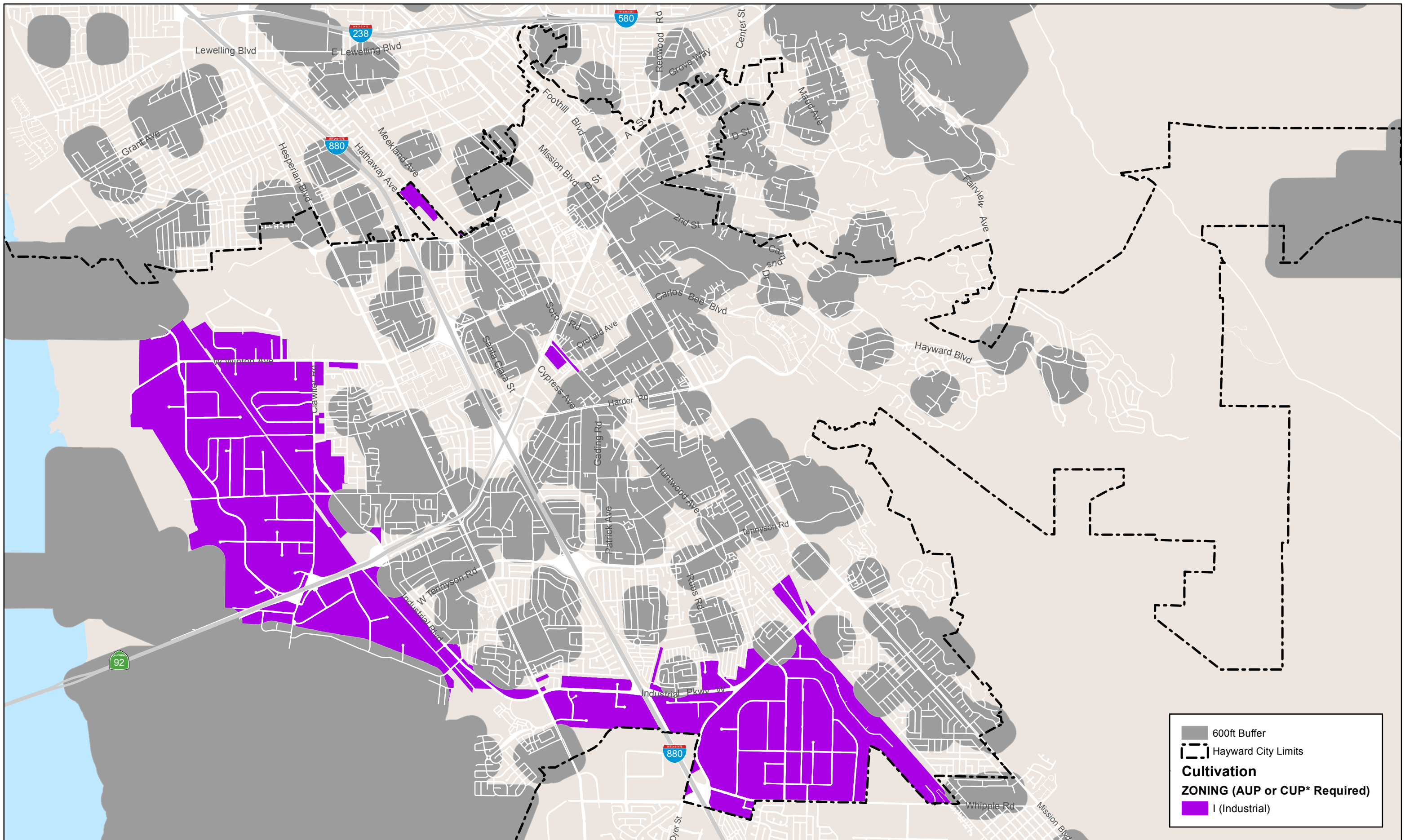
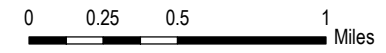
AUP	Neighborhood Commercial (CN)
AUP	Neighborhood Commercial – Residential District (CN - R)
AUP	General Commercial (CG)
AUP	Commercial Office (CO)
P	Industrial (I)
AUP	Light Manufacturing (LM)

Commercial Cannabis Delivery

For the purposes of land use classification, this land use is similar in nature to other Administrative and Professional Offices/Services

AUP	Neighborhood Commercial (CN)
AUP	Neighborhood Commercial – Residential District (CN - R)
AUP	General Commercial (CG)
AUP	Commercial Office (CO)
P	Industrial (I)
AUP	South Hayward/Mission FBC (T4 and T5 Zones)
AUP	Hayward Mission Blvd FBC (T4-1, T4-2 and T5 Zones)

H HAYWARD **Commercial Cannabis Cultivation – Zoning Districts**

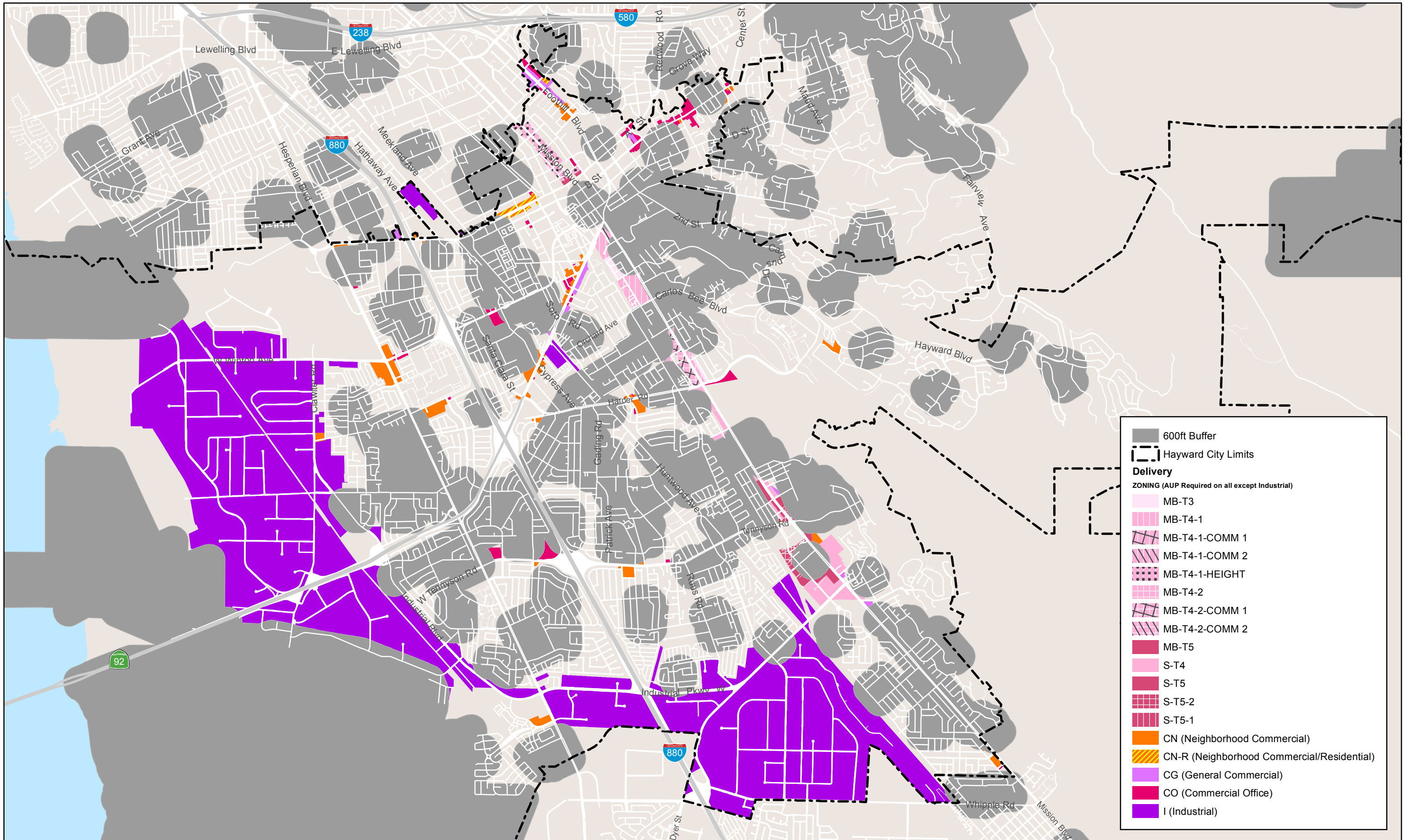
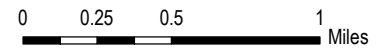


Note: Sensitive Receptors include libraries, community centers, public parks, recreation centers, youth centers, K-12 schools, and day care centers.

*Entitlement process depends on the size of the cultivation operation.



Commercial Cannabis Delivery – Zoning Districts



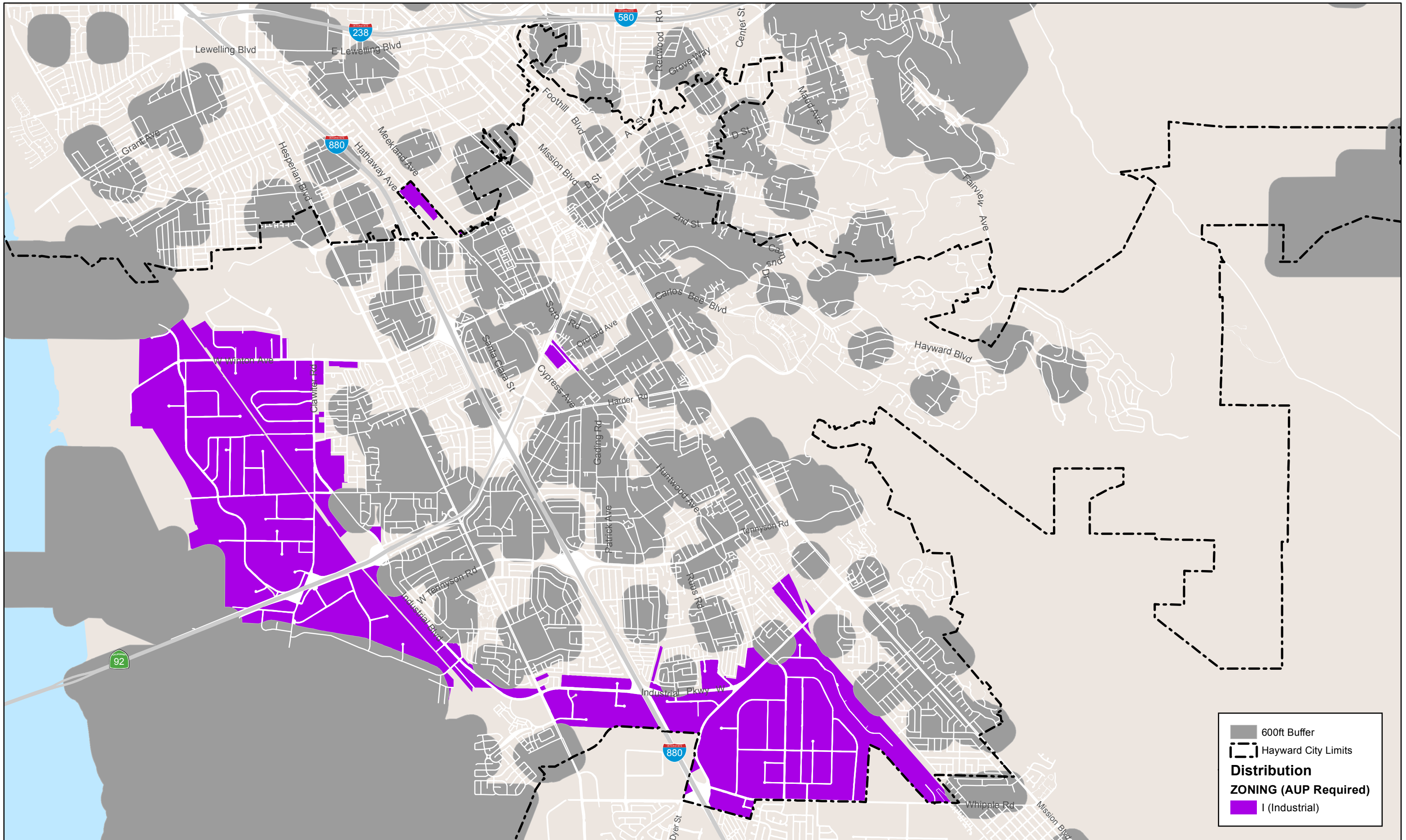
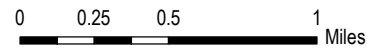
600ft Buffer
 Hayward City Limits
Delivery
 ZONING (AUP Required on all except Industrial)

- MB-T3
- MB-T4-1
- MB-T4-1-COMM 1
- MB-T4-1-COMM 2
- MB-T4-1-HEIGHT
- MB-T4-2
- MB-T4-2-COMM 1
- MB-T4-2-COMM 2
- MB-T5
- S-T4
- S-T5
- S-T5-2
- S-T5-1
- CN (Neighborhood Commercial)
- CN-R (Neighborhood Commercial/Residential)
- CG (General Commercial)
- CO (Commercial Office)
- I (Industrial)

Note: Sensitive Receptors include libraries, community centers, public parks, recreation centers, youth centers, K-12 schools, and day care centers. For the purposes of land use classification, this land use is similar in nature to other Administrative and Professional Offices/Services September 2017



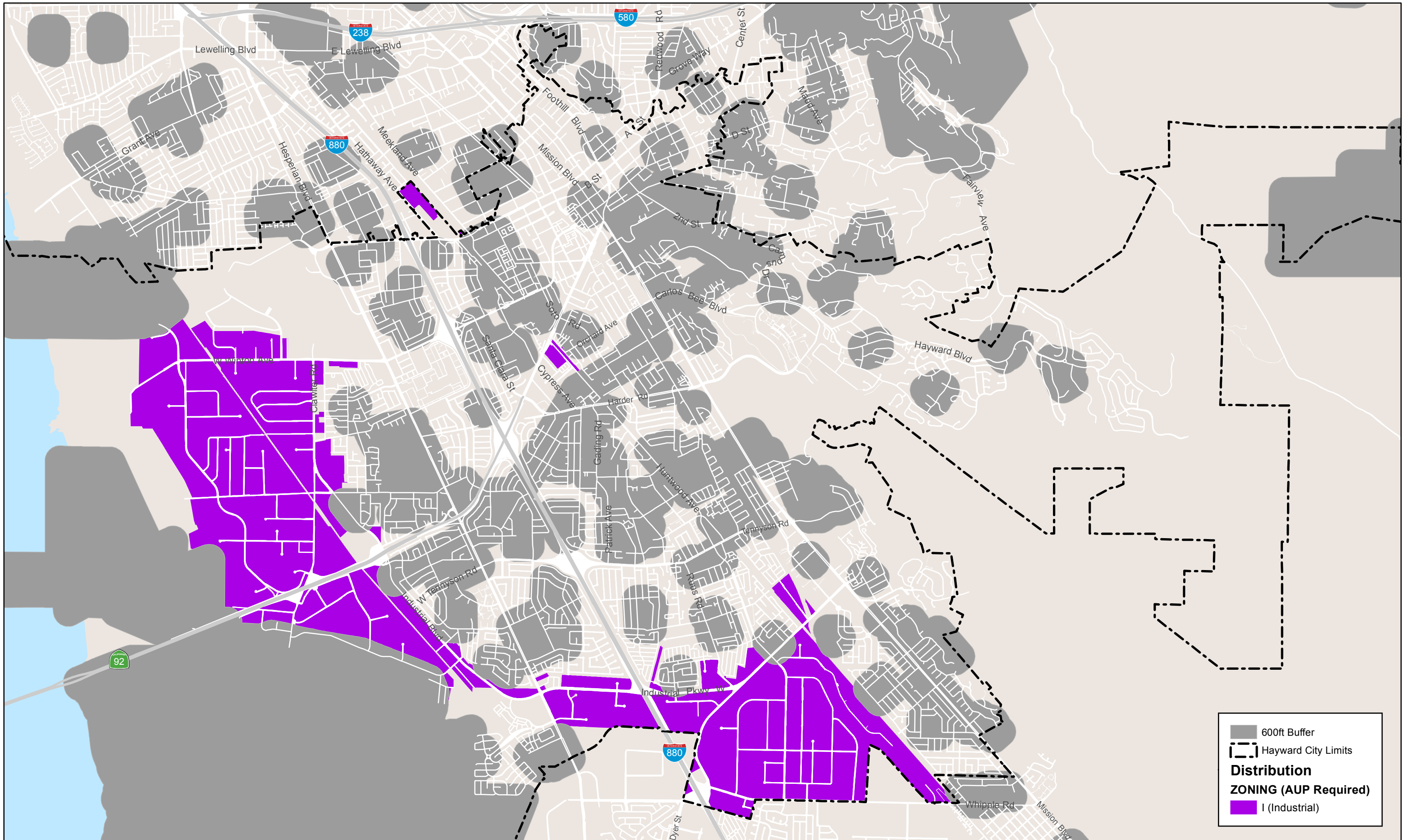
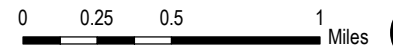
Commercial Cannabis Distribution – Zoning Districts



Note: Sensitive Receptors include libraries, community centers, public parks, recreation centers, youth centers, K-12 schools, and day care centers.



Commercial Cannabis Manufacturing (Level 1*) – Zoning Districts



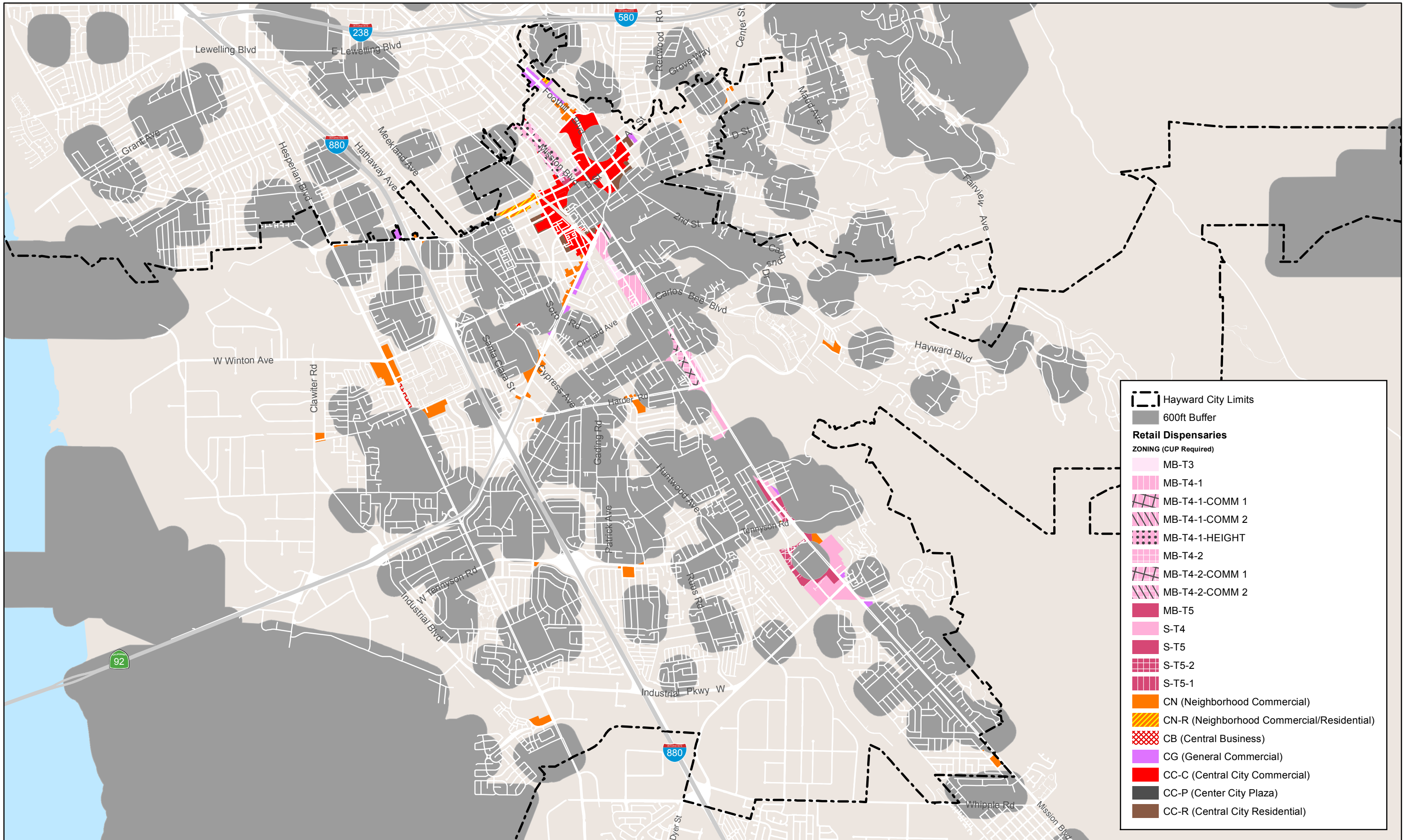
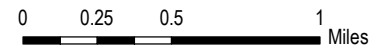
600ft Buffer
 Hayward City Limits
Distribution ZONING (AUP Required)
 I (Industrial)

Note: Sensitive Receptors include libraries, community centers, public parks, recreation centers, youth centers, K-12 schools, and day care centers.

*Level 2 manufacturing (using volatile substances) is prohibited



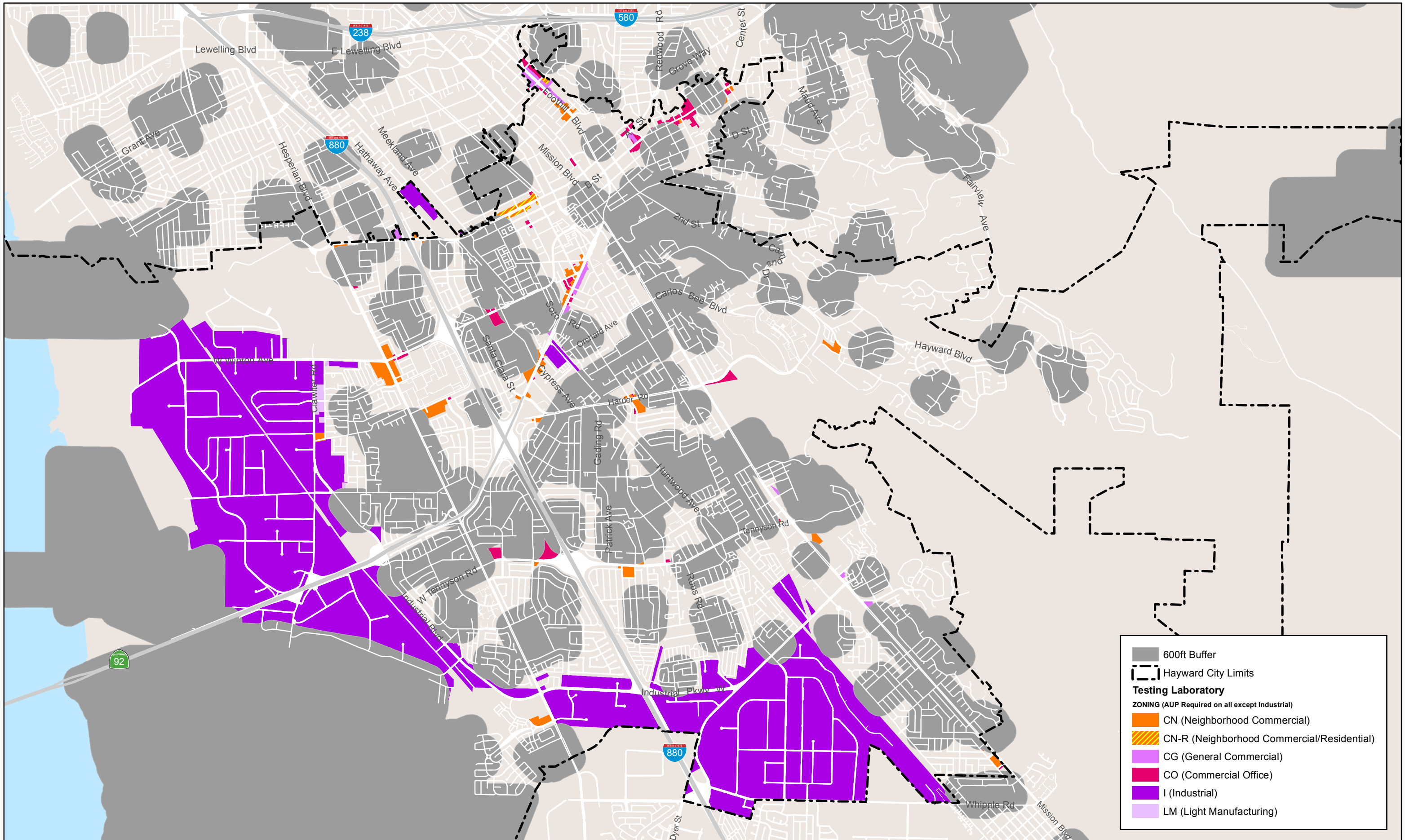
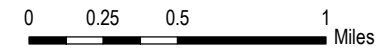
Commercial Cannabis Retail Dispensaries – Zoning Districts



Note: Sensitive Receptors include libraries, community centers, public parks, recreation centers, youth centers, K-12 schools, and day care centers.



Commercial Cannabis Testing Laboratory – Zoning Districts



Note: Sensitive Receptors include libraries, community centers, public parks, recreation centers, youth centers, K-12 schools, and day care centers.

For the purposes of land use classification, this land use is similar to other Medical/Dental Laboratories September 2017