

DRAFT

You are receiving this flyer because you are within the Hayward GHAD.

What is a GHAD?

A GHAD is a public agency that allows property owners to group together and mitigate geologic hazards.

It works to protect you and your property.

Your GHAD Board of Directors (BOD)

The Hayward GHAD BOD comprises members of the Hayward City Council, who are:

- Chair Barbara Halliday
- Boardmember Francisco Zermeño
- Boardmember Angela Andrews
- Boardmember Sara Lamnin
- Boardmember Elisa Márquez
- Boardmember Mark Salinas
- Boardmember Aisha Wahab

Your Hayward GHAD

- Formed in 2016
- Financed through supplemental homeowner property tax assessments
- Managed by ENGEO Incorporated

For more info, visit:

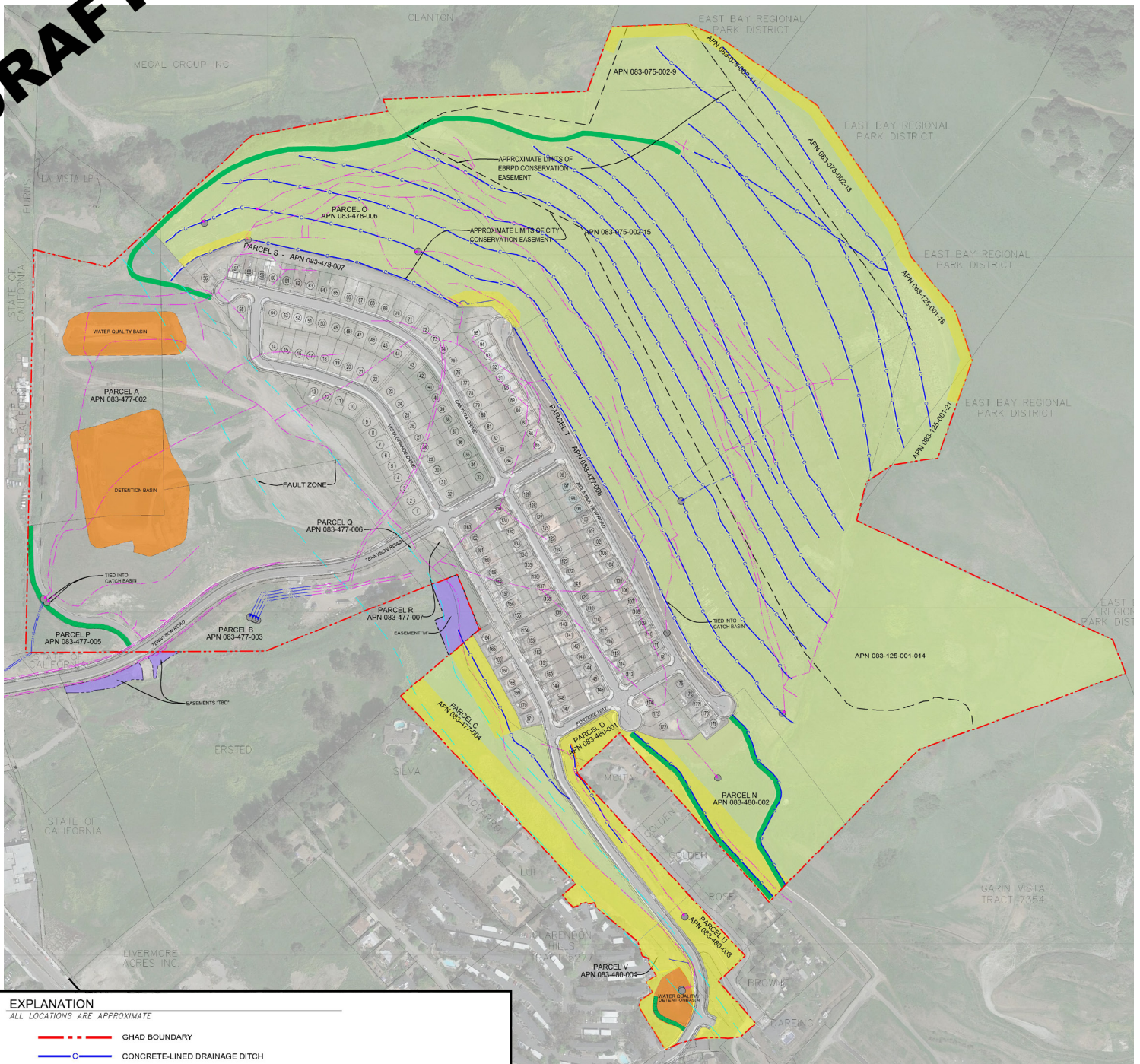
www.haywardghad.org

GHAD Duties

- Prevention, mitigation, abatement, and control of geologic hazards
- Monitoring and maintenance of storm drain systems, detention basins, and slopes
- Emergency response for significant earth movement events



DRAFT



EXPLANATION
ALL LOCATIONS ARE APPROXIMATE

- GHAD BOUNDARY
- C— CONCRETE-LINED DRAINAGE DITCH
- MSE RETAINING WALL
- SUBDRAIN - SOLID
- SUBDRAIN - PERFORATED
- SUBDRAIN - OUTFALL
- WATER QUALITY/ DETENTION BASIN
- MAINTENANCE / EVA ROADWAY - EARTHEN SURFACED
- MAINTENANCE / EVA ROADWAY - ASPHALTIC CONCRETE
- MAINTENANCE ROADWAY - GRAVEL SURFACED
- GHAD-OWNED PARCEL
- EASEMENT
- VEGETATION MANAGEMENT ZONE
- PARCELINE

PARCEL V PARCEL LABEL
083-480-002 ASSESSOR'S PARCEL NUMBER (APN)

(179) LOT NUMBER

ENGEО Incorporated - Hayward GHAD
 2010 Crow Canyon Pl, Suite 250
 San Ramon, CA 94583
 Office (925) 866-9000

Manager
Eric Harrell
 Direct (925) 786-5579, E-Mail: eharrell@engeo.com

Haley Ralston
 Direct: (909)373-5457, E-Mail: hralston@engeo.com

	SITE PLAN	PROJECT NO.: 6671.002.019	FIGURE NO.
	HAYWARD GHAD	SCALE: AS SHOWN	1
	HAYWARD, CALIFORNIA	DRAWN BY: JV CHECKED BY: EWH	
		ORIGINAL: 1/28/2019 9:00 AM	