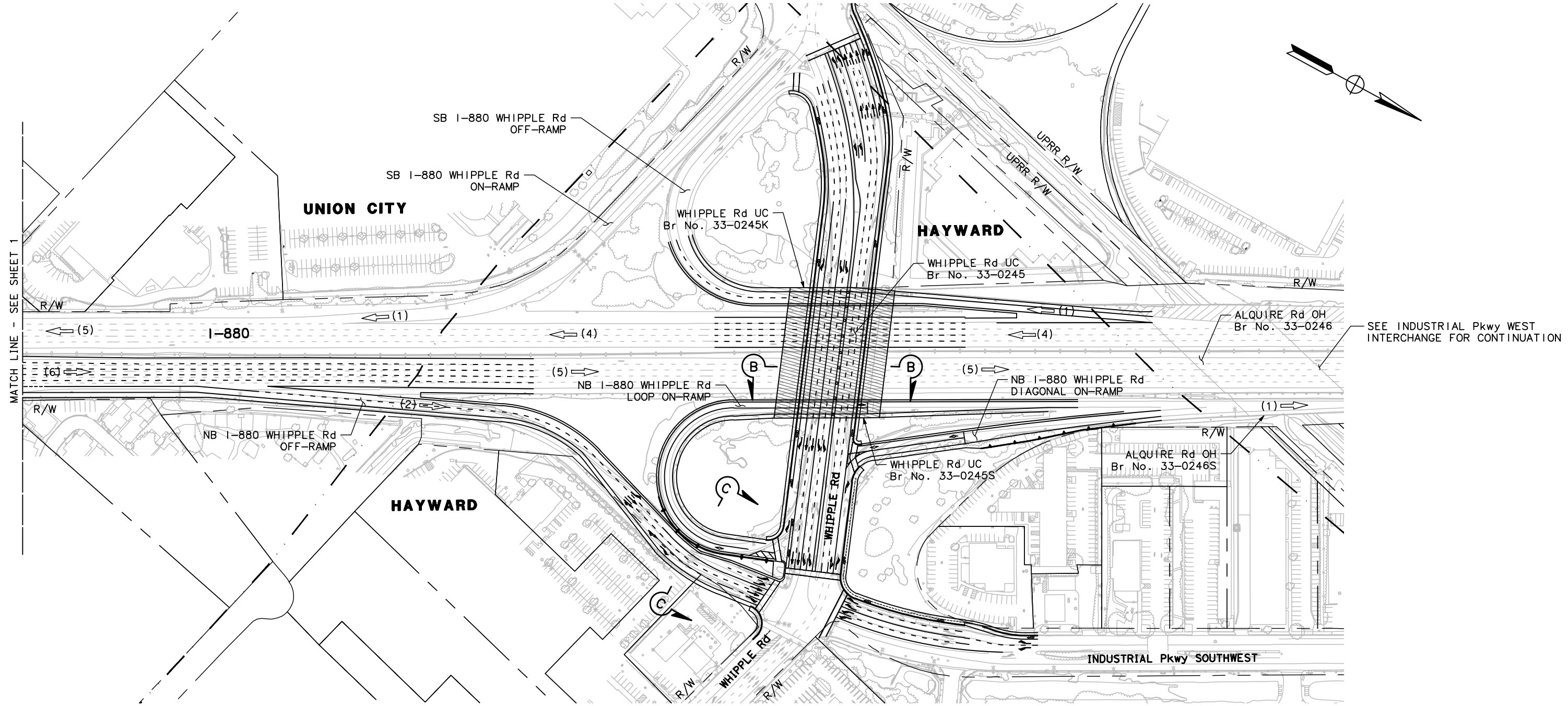


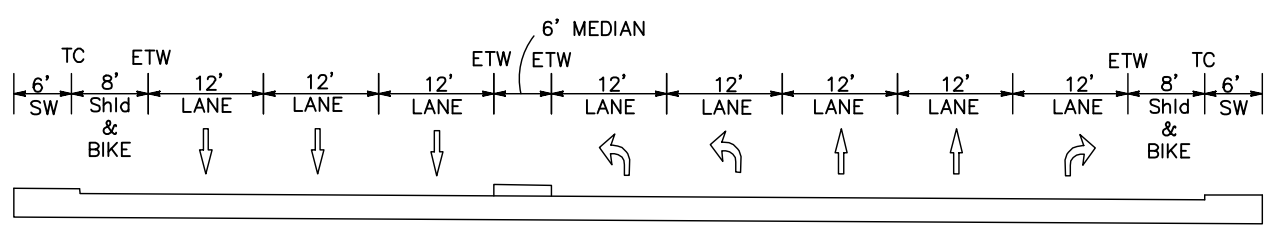
- LEGEND:**
- RIGHT OF WAY / PARCEL LINE
 - . - - CITY LIMIT
 - ← (#) NUMBER OF TRAVEL LANES IN DIRECTION OF TRAFFIC
 - ▨ PROPOSED STRUCTURE

I-880 INTERCHANGE IMPROVEMENTS
WHIPPLE Rd-INDUSTRIAL Pkwy SOUTHWEST INTERCHANGE
 ALT W - REPLACE UC STRUCTURE
 SCALE: 1" = 200'
 MARCH 2018

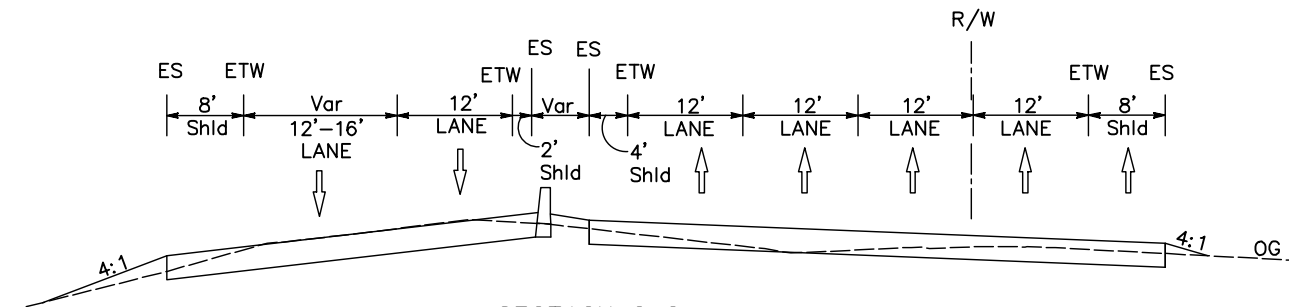


MATCH LINE - SEE SHEET 1

SEE INDUSTRIAL Pkwy WEST INTERCHANGE FOR CONTINUATION



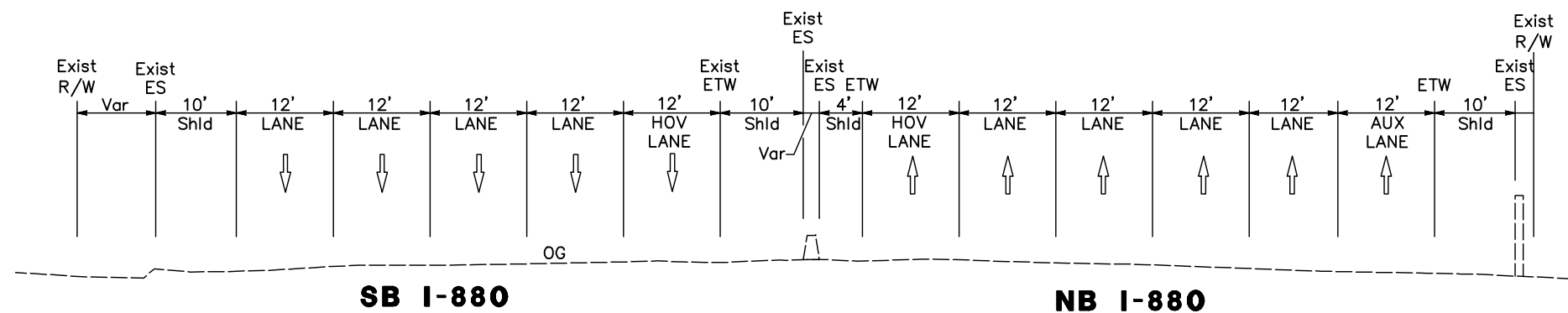
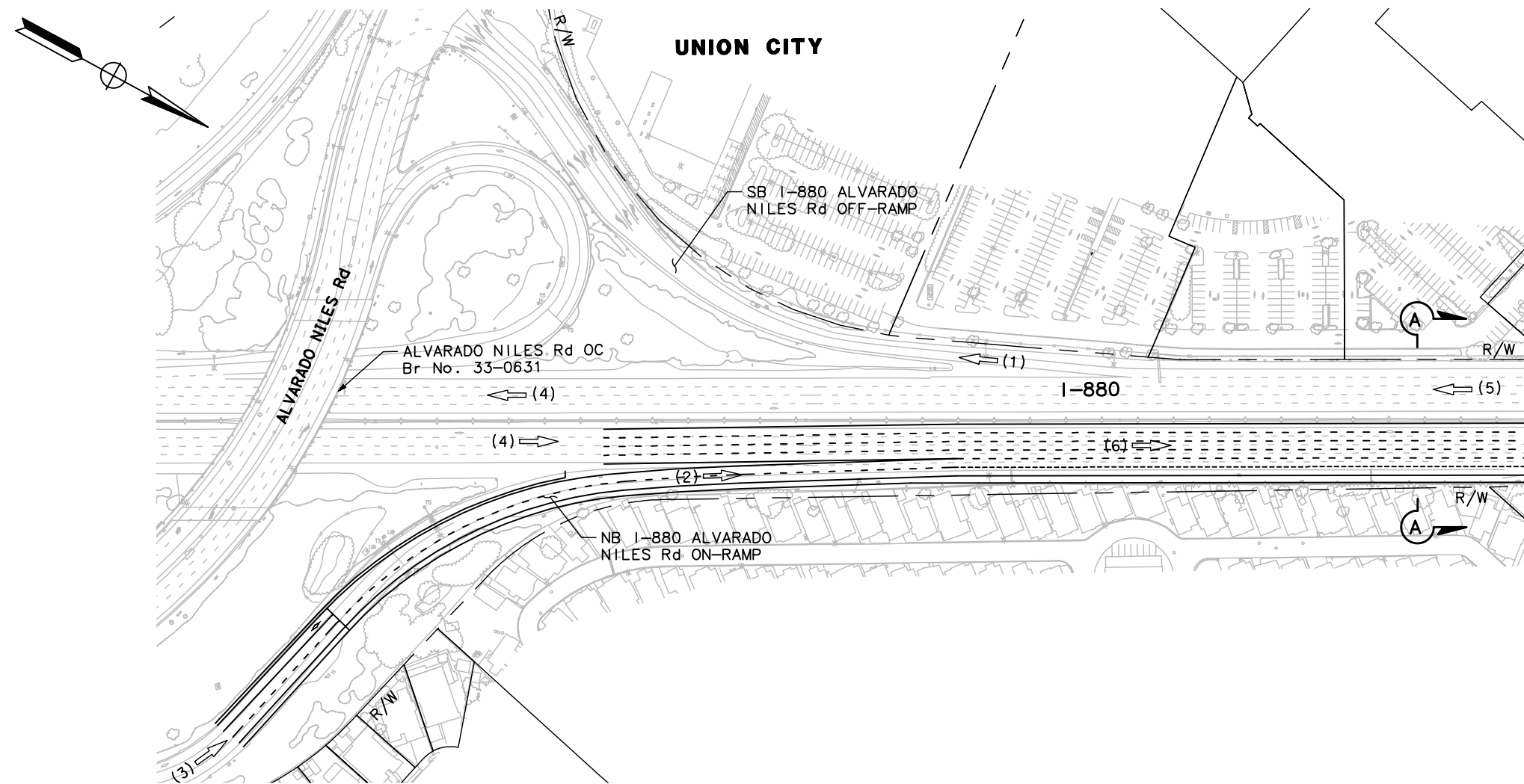
SECTION B-B
NTS



SECTION C-C
NTS

- LEGEND:**
- RIGHT OF WAY / PARCEL LINE
 - - - CITY LIMIT
 - ← (#) NUMBER OF TRAVEL LANES IN DIRECTION OF TRAFFIC
 - ▨ PROPOSED STRUCTURE

I-880 INTERCHANGE IMPROVEMENTS
WHIPPLE Rd-INDUSTRIAL Pkwy SOUTHWEST INTERCHANGE
 ALT W - REPLACE UC STRUCTURE
 SCALE: 1" = 200'
 MARCH 2018



LEGEND:

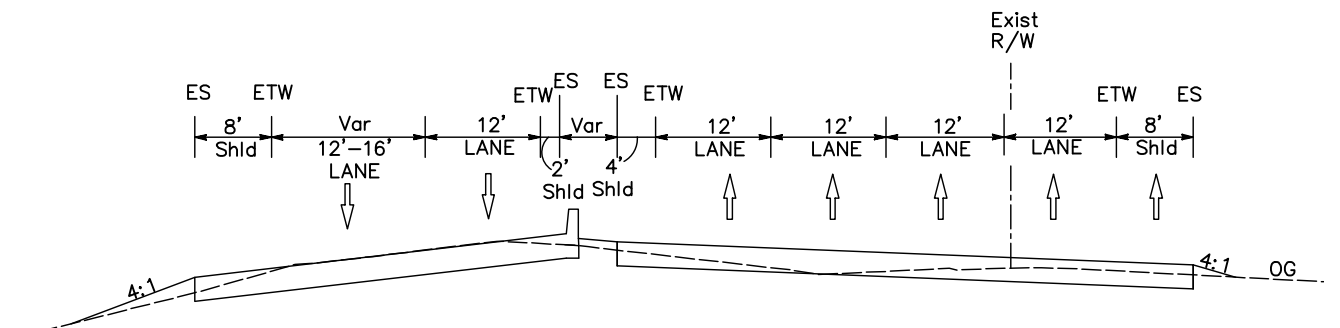
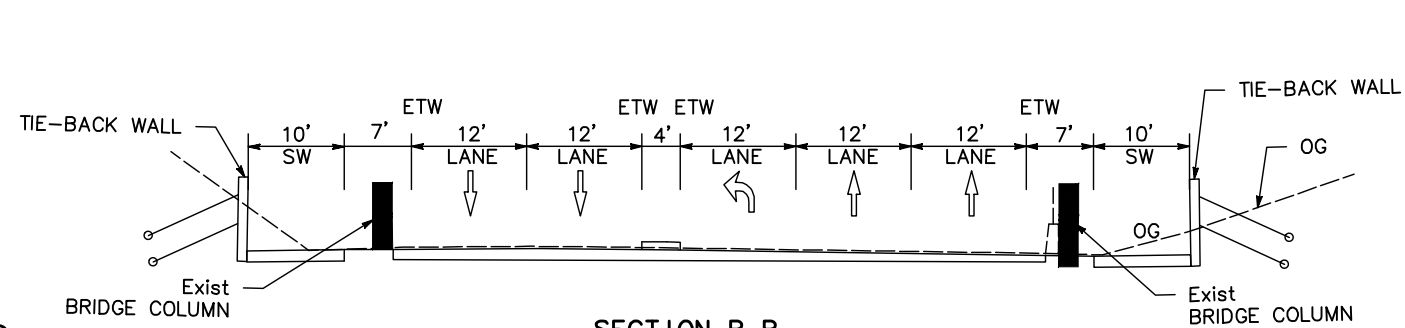
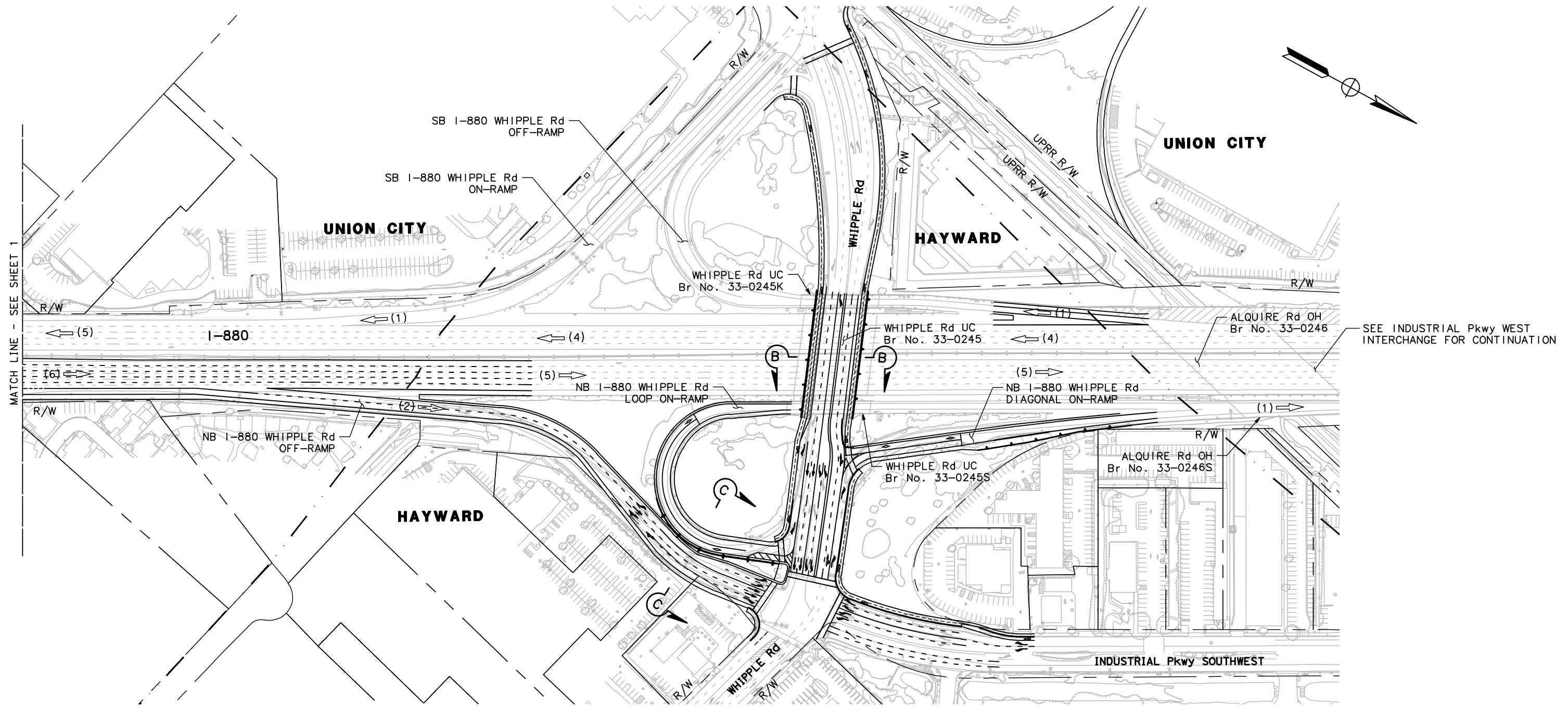
- RIGHT OF WAY / PARCEL LINE
- . - - CITY LIMIT
- ← (#) NUMBER OF TRAVEL LANES IN DIRECTION OF TRAFFIC
- ▨ PROPOSED STRUCTURE

**I-880 INTERCHANGE IMPROVEMENTS
WHIPPLE Rd-INDUSTRIAL Pkwy SOUTHWEST
INTERCHANGE**

ALT W DESIGN VARIATION 1 -
MAINTAIN EXISTING UC STRUCTURE

SCALE: 1" = 200'

MARCH 2018



- LEGEND:**
- RIGHT OF WAY / PARCEL LINE
 - - - CITY LIMIT
 - ← (#) NUMBER OF TRAVEL LANES IN DIRECTION OF TRAFFIC
 - ▨ PROPOSED STRUCTURE

SECTION B-B
NTS

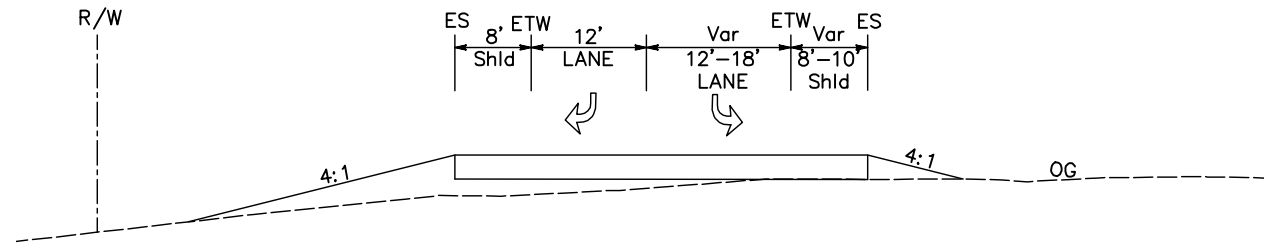
SECTION C-C
NTS

**I-880 INTERCHANGE IMPROVEMENTS
WHIPPLE Rd-INDUSTRIAL Pkwy SOUTHWEST
INTERCHANGE**

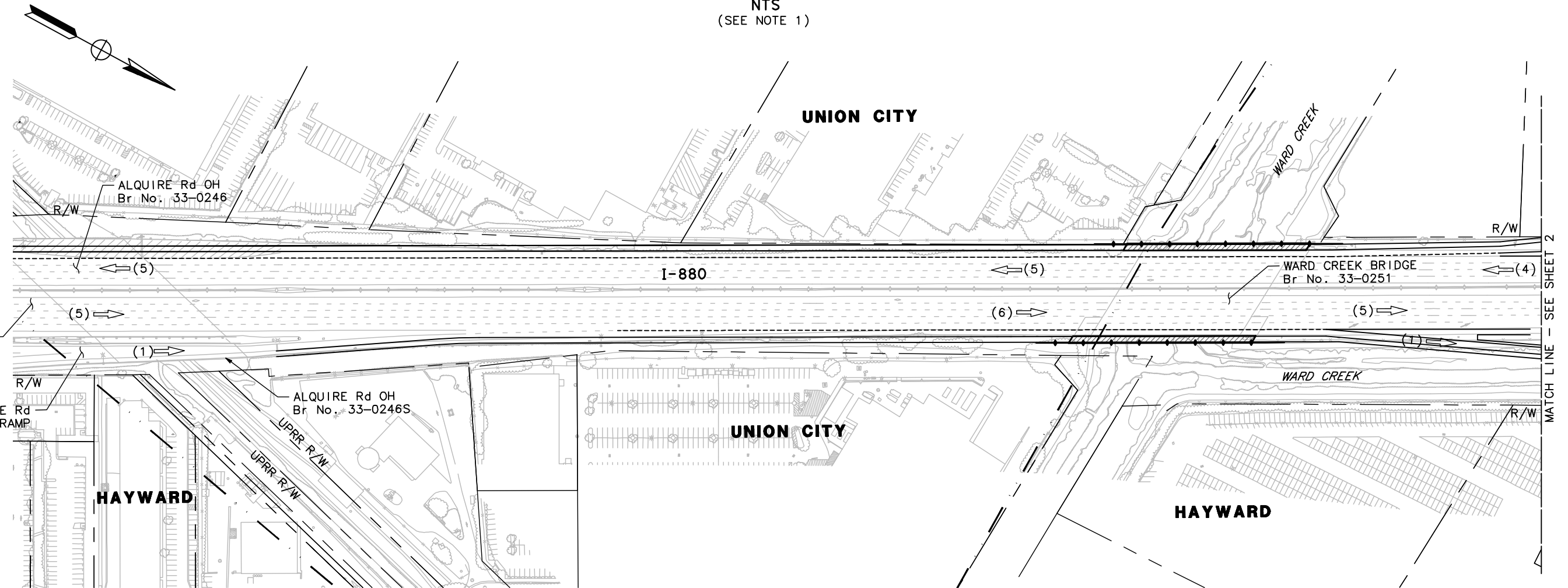
ALT W DESIGN VARIATION 1 -
MAINTAIN EXISTING UC STRUCTURE
SCALE: 1" = 200'
MARCH 2018

NOTE:

1. FOR LOCATIONS OF SECTION A-A AND SECTION B-B, SEE SHEET 2.

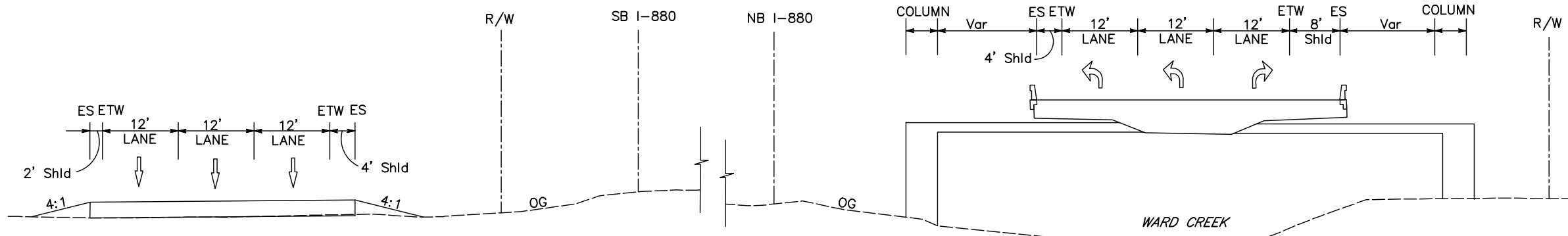


**SECTION B-B
NTS
(SEE NOTE 1)**



SEE WHIPPLE Rd - INDUSTRIAL Pkwy SOUTHWEST INTERCHANGE FOR CONTINUATION
NB I-880 WHIPPLE Rd DIAGONAL ON-RAMP

MATCH LINE - SEE SHEET 2



**SECTION A-A
NTS
(SEE NOTE 1)**

LEGEND:

- RIGHT OF WAY / PARCEL LINE
- - - CITY LIMIT
- ← (#) NUMBER OF TRAVEL LANES IN DIRECTION OF TRAFFIC
- ▨ PROPOSED STRUCTURE

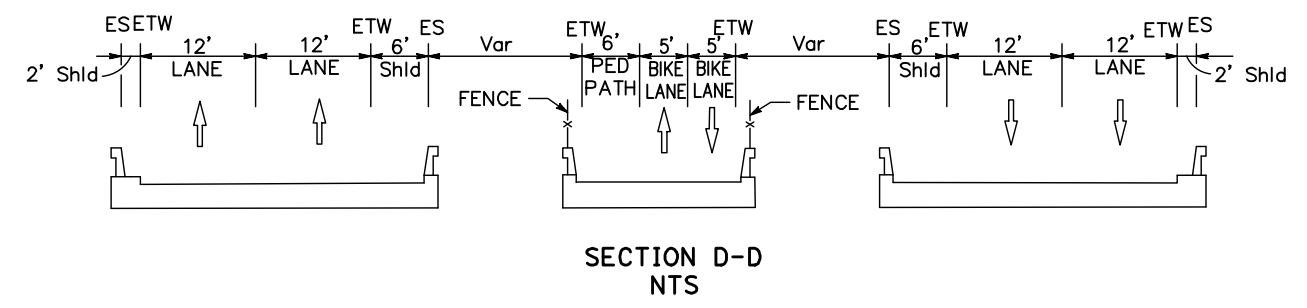
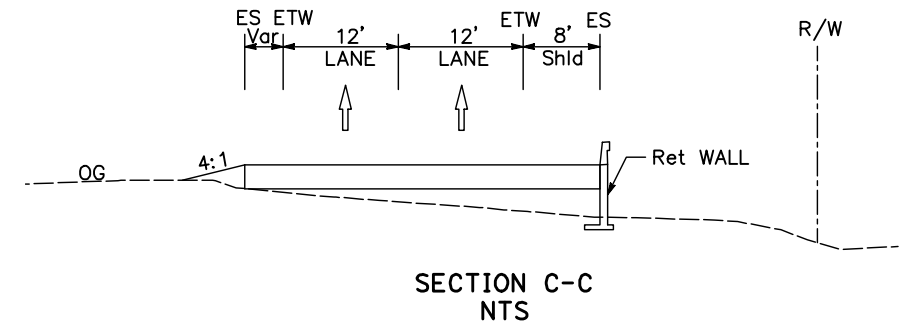
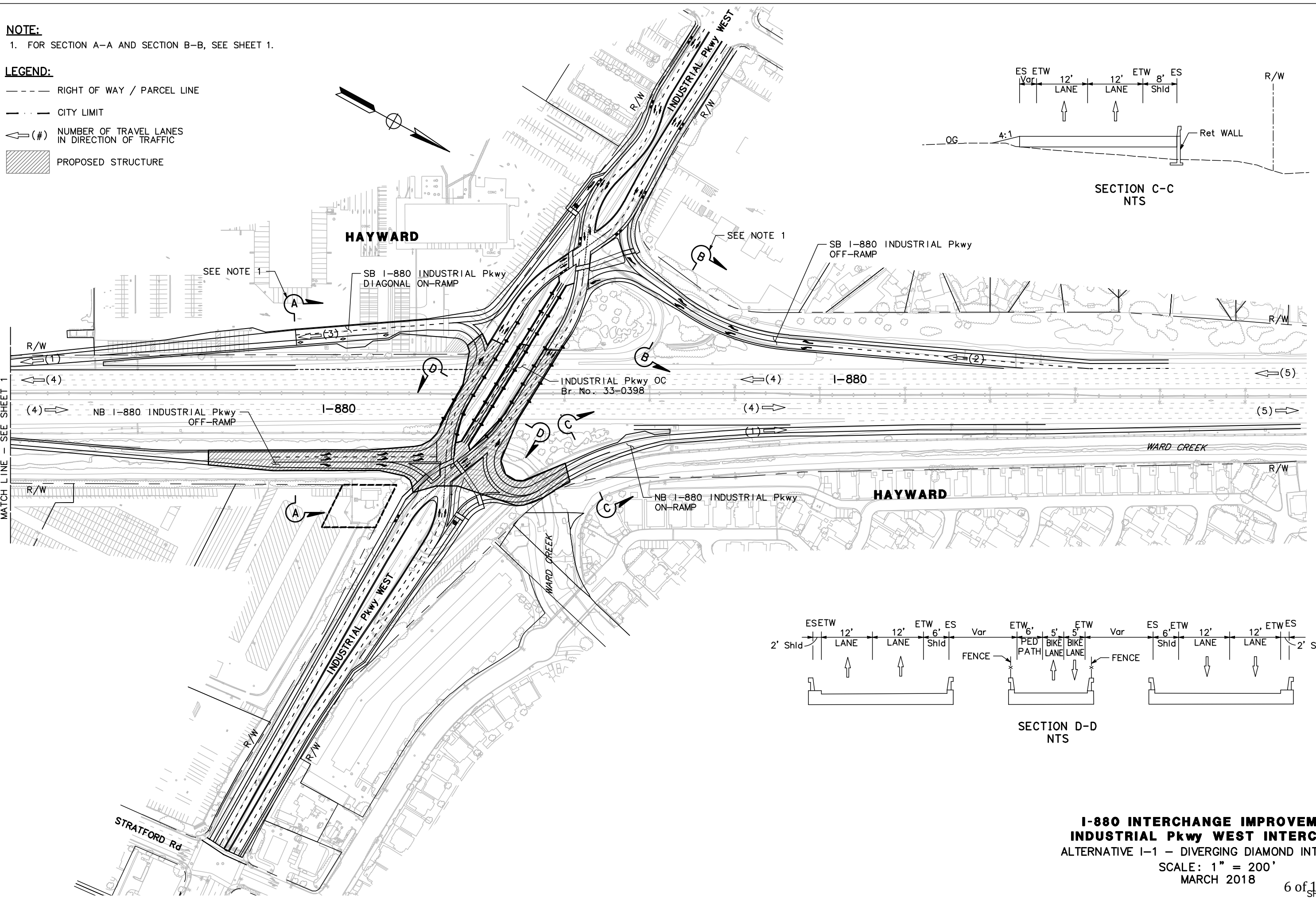
I-880 INTERCHANGE IMPROVEMENTS
INDUSTRIAL Pkwy WEST INTERCHANGE
 ALTERNATIVE I-1 - DIVERGING DIAMOND INTERCHANGE
 SCALE: 1" = 200'
 MARCH 2018

NOTE:

1. FOR SECTION A-A AND SECTION B-B, SEE SHEET 1.

LEGEND:

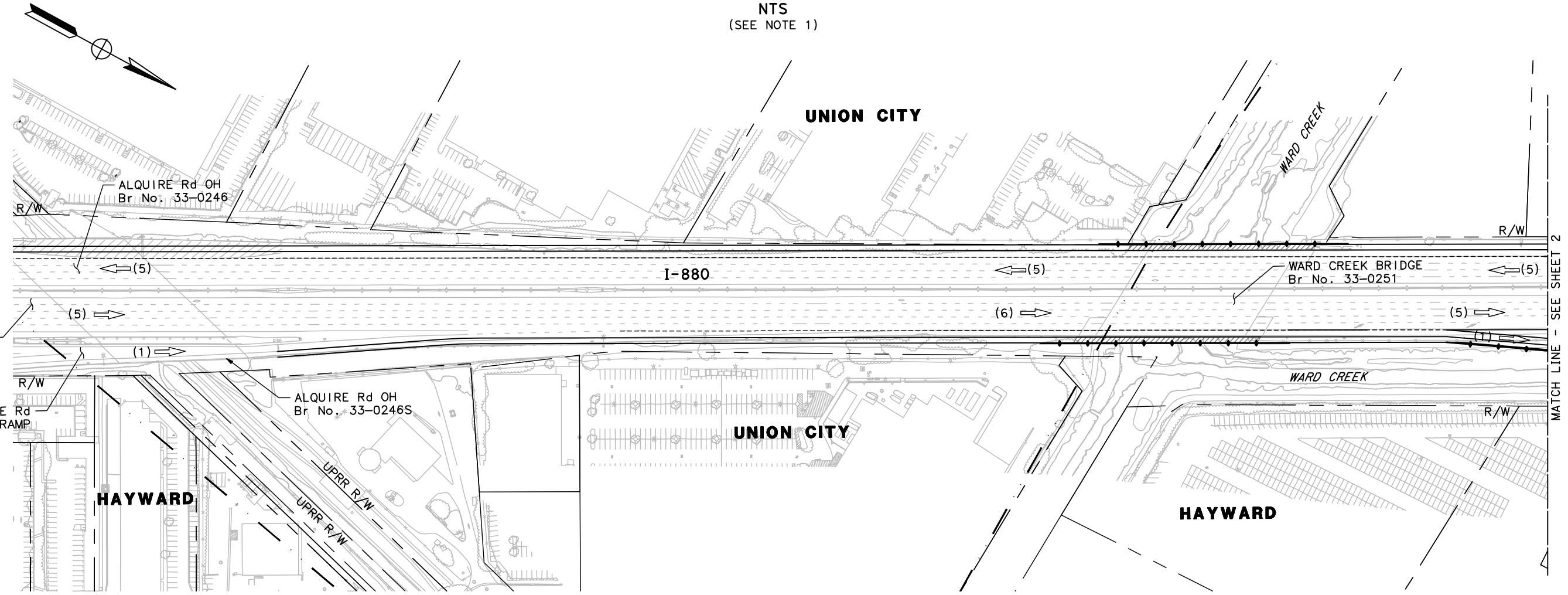
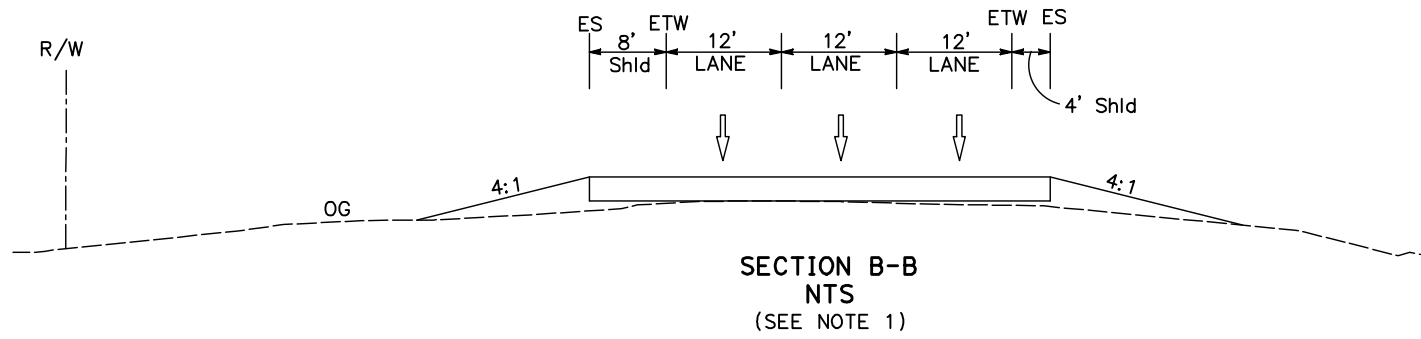
- RIGHT OF WAY / PARCEL LINE
- - - CITY LIMIT
- ← (#) NUMBER OF TRAVEL LANES IN DIRECTION OF TRAFFIC
- ▨ PROPOSED STRUCTURE



I-880 INTERCHANGE IMPROVEMENTS
INDUSTRIAL Pkwy WEST INTERCHANGE
 ALTERNATIVE I-1 - DIVERGING DIAMOND INTERCHANGE
 SCALE: 1" = 200'
 MARCH 2018
 6 of 10
 SHEET 2 OF 2

NOTE:

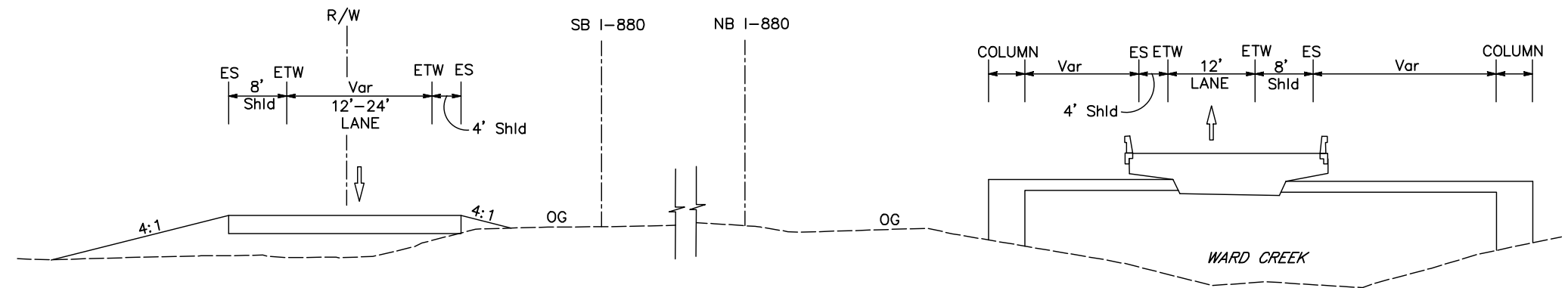
1. FOR LOCATIONS OF SECTION A-A AND SECTION B-B, SEE SHEET 2.



SEE WHIPPLE Rd - INDUSTRIAL Pkwy SOUTHWEST INTERCHANGE FOR CONTINUATION
 NB I-880 WHIPPLE Rd DIAGONAL ON-RAMP

MATCH LINE - SEE SHEET 2

- LEGEND:**
- RIGHT OF WAY / PARCEL LINE
 - . - . - CITY LIMIT
 - ← (#) NUMBER OF TRAVEL LANES IN DIRECTION OF TRAFFIC
 - ▨ PROPOSED STRUCTURE



SECTION A-A NTS
(SEE NOTE 1)

I-880 INTERCHANGE IMPROVEMENTS
INDUSTRIAL Pkwy WEST INTERCHANGE
 ALTERNATIVE I-2 - TIGHT DIAMOND INTERCHANGE
 SCALE: 1" = 200'
 MARCH 2018

NOTE:

1. FOR SECTION A-A AND SECTION B-B, SEE SHEET 1.

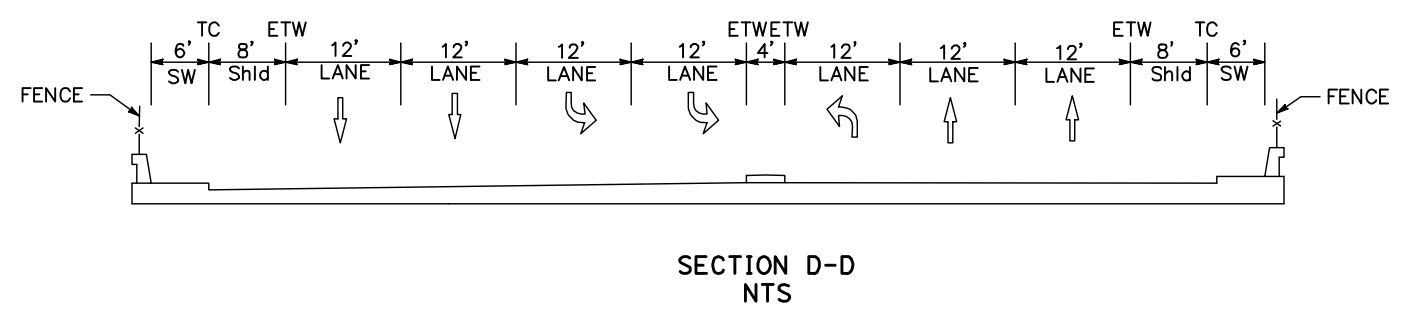
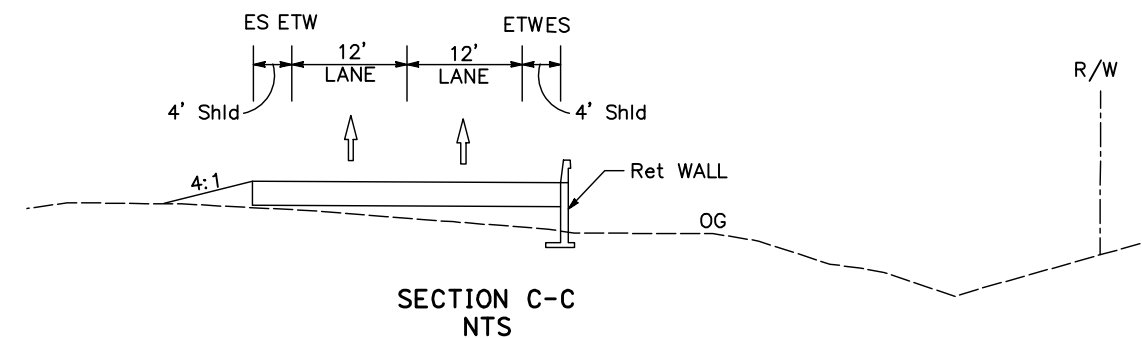
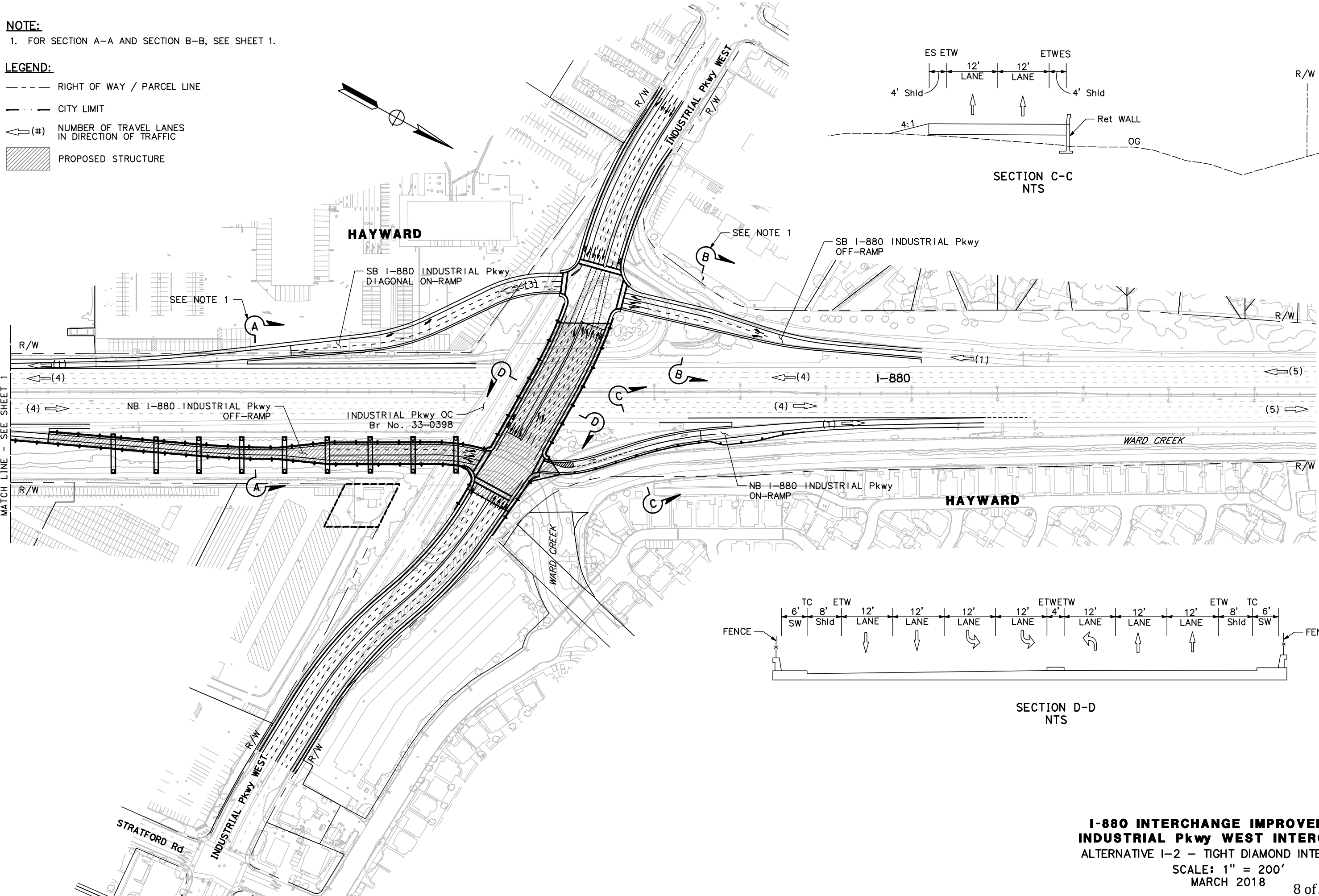
LEGEND:

--- RIGHT OF WAY / PARCEL LINE

- - - CITY LIMIT

← (#) NUMBER OF TRAVEL LANES IN DIRECTION OF TRAFFIC

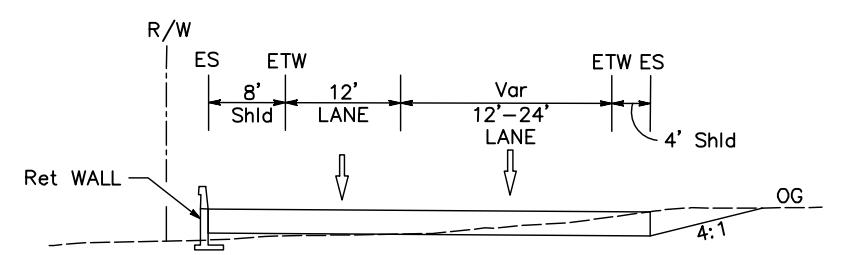
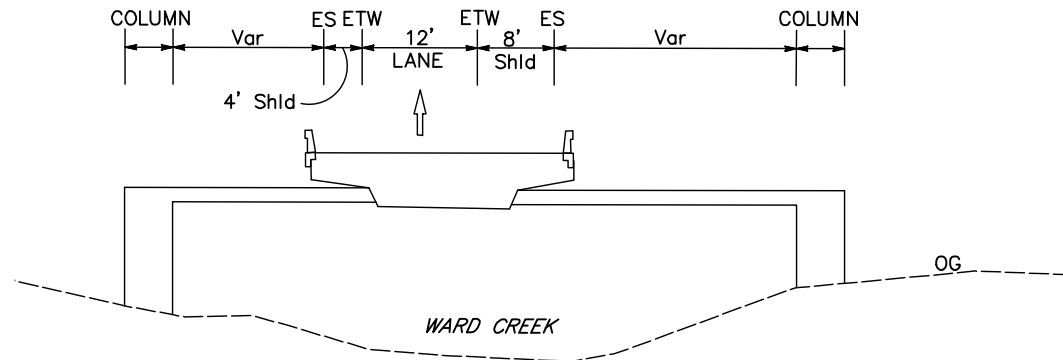
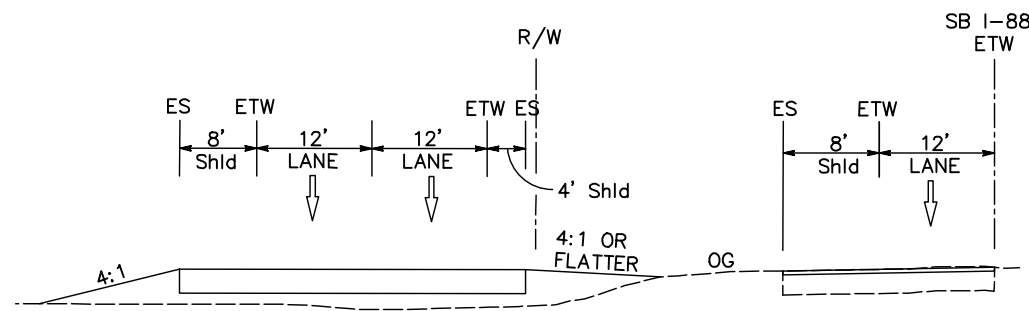
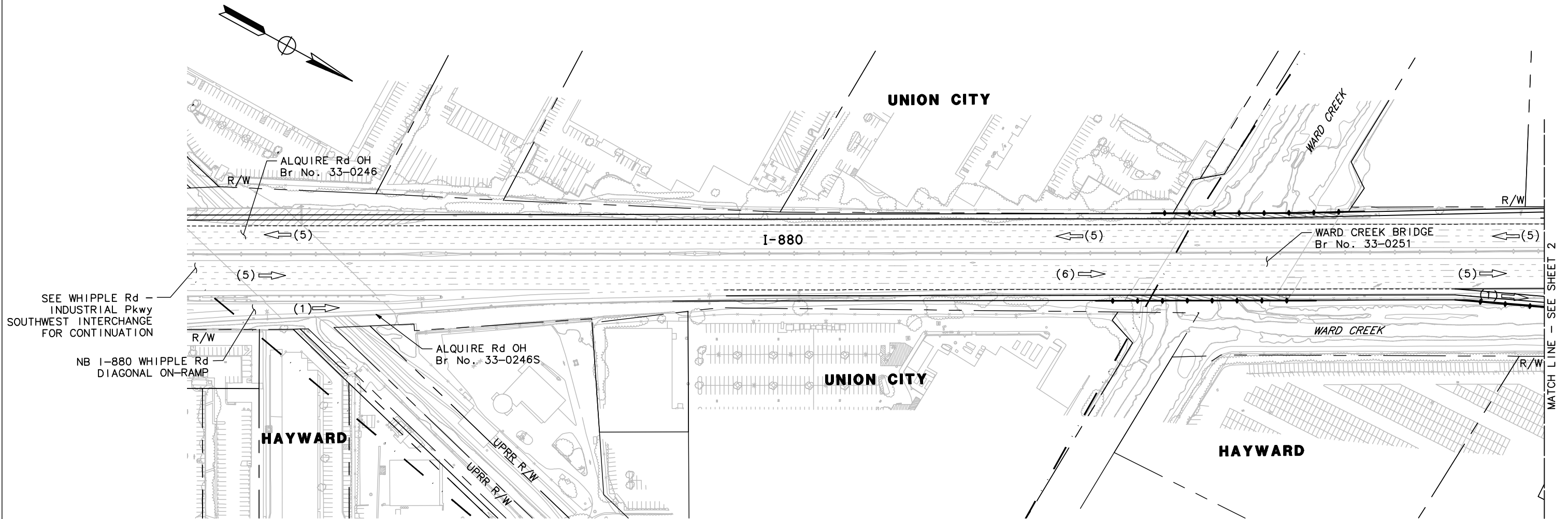
▨ PROPOSED STRUCTURE



I-880 INTERCHANGE IMPROVEMENTS
INDUSTRIAL Pkwy WEST INTERCHANGE
 ALTERNATIVE I-2 - TIGHT DIAMOND INTERCHANGE
 SCALE: 1" = 200'
 MARCH 2018

NOTE:

- FOR LOCATIONS OF SECTION A-A, SECTION B-B, AND SECTION C-C, SEE SHEET 2.



LEGEND:

- RIGHT OF WAY / PARCEL LINE
- - - CITY LIMIT
- ← (#) NUMBER OF TRAVEL LANES IN DIRECTION OF TRAFFIC
- ▨ PROPOSED STRUCTURE

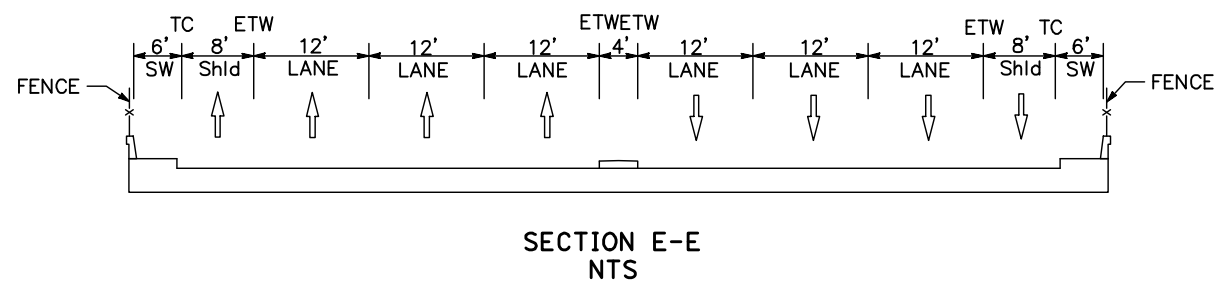
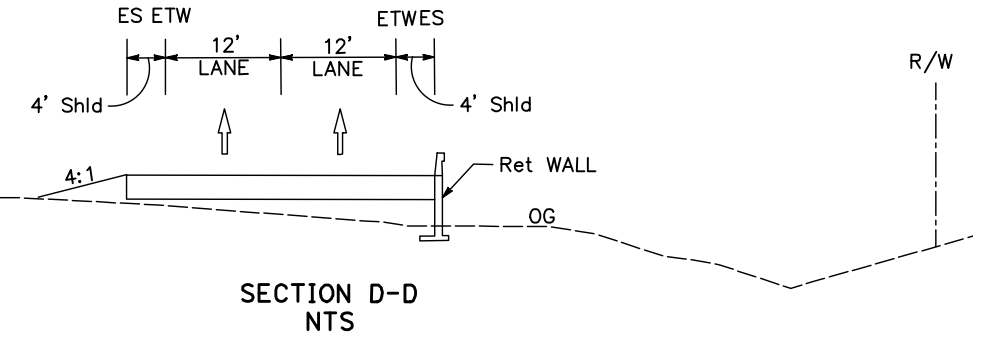
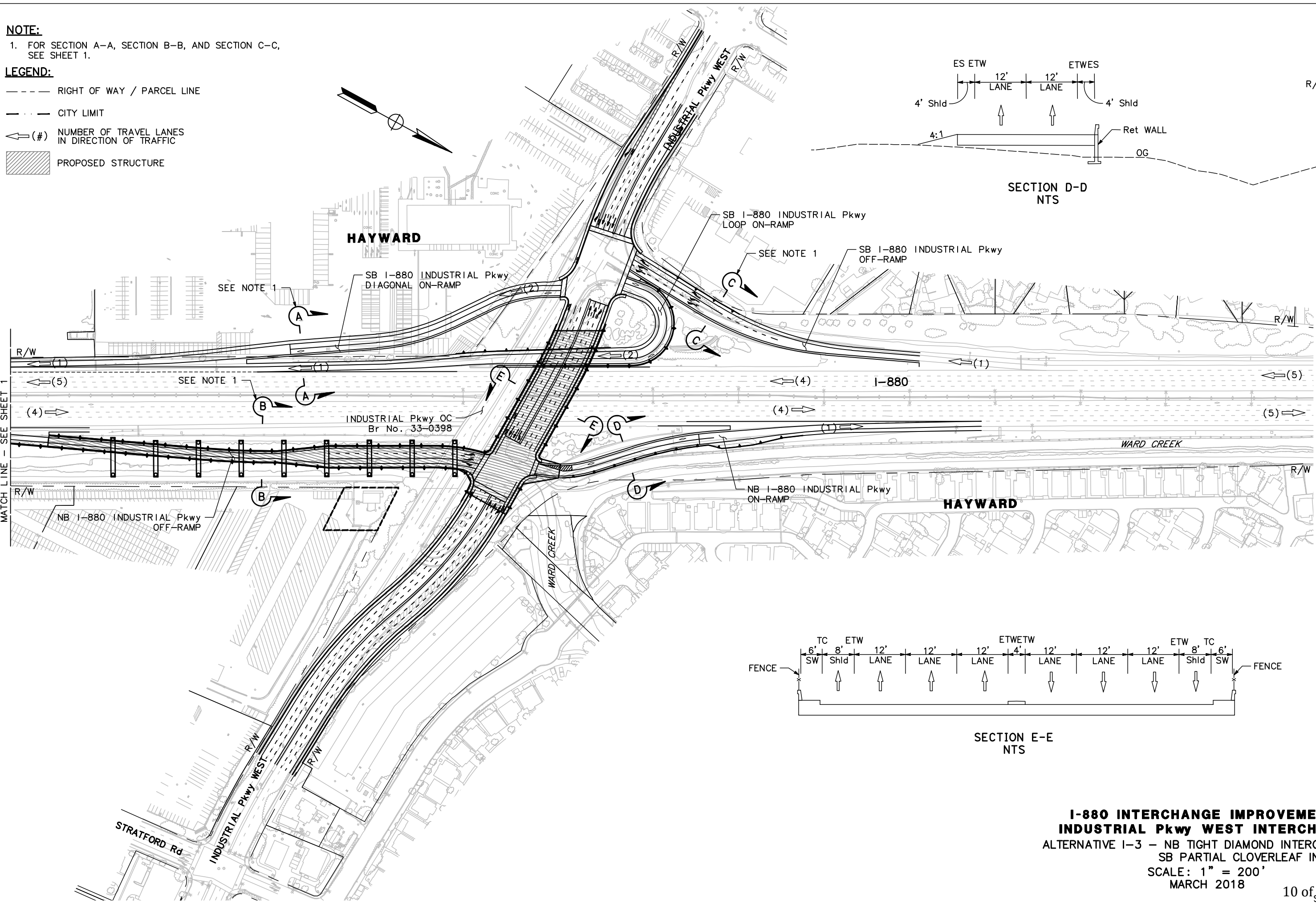
I-880 INTERCHANGE IMPROVEMENTS
INDUSTRIAL Pkwy WEST INTERCHANGE
 ALTERNATIVE I-3 - NB TIGHT DIAMOND INTERCHANGE & SB PARTIAL CLOVERLEAF INTERCHANGE
 SCALE: 1" = 200'
 MARCH 2018

NOTE:

1. FOR SECTION A-A, SECTION B-B, AND SECTION C-C, SEE SHEET 1.

LEGEND:

- RIGHT OF WAY / PARCEL LINE
- - - CITY LIMIT
- ← (#) NUMBER OF TRAVEL LANES IN DIRECTION OF TRAFFIC
- ▨ PROPOSED STRUCTURE



I-880 INTERCHANGE IMPROVEMENTS
INDUSTRIAL Pkwy WEST INTERCHANGE
 ALTERNATIVE I-3 - NB TIGHT DIAMOND INTERCHANGE & SB PARTIAL CLOVERLEAF INTERCHANGE
 SCALE: 1" = 200'
 MARCH 2018