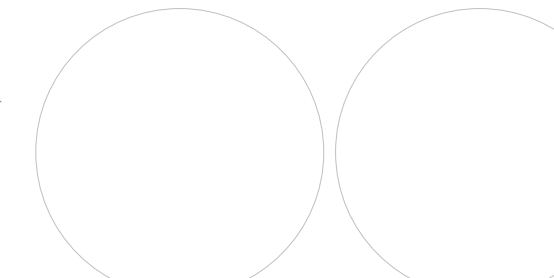




4750 Willow Road #250 Pleasanton, CA 94588 - T 925.648.8800
3099 Douglas Blvd #290 Roseville, CA 95661 - T 916.772.1800
3050 Pullman Street Costa Mesa, CA 92626 - T 714.338.1600

CONSULTANT:

PROFESSIONAL STAMP:



AGENCY APPROVAL:

ITEM:	REVISION/ISSUE:	DATE:
A	PLANNING SUBMITTAL	01/27/20
B	PLANNING RESUBMITTAL	04/24/20

KEY PLAN:

Owner

U-HAUL COMPANY OF EAST BAY

4150 POINT EDEN WAY

SITE PLAN

DRAWN BY: RS CHECKED BY: RFT
DATE: 01/18/2021 PROJECT NO: U2301

SHEET NO:

A-100

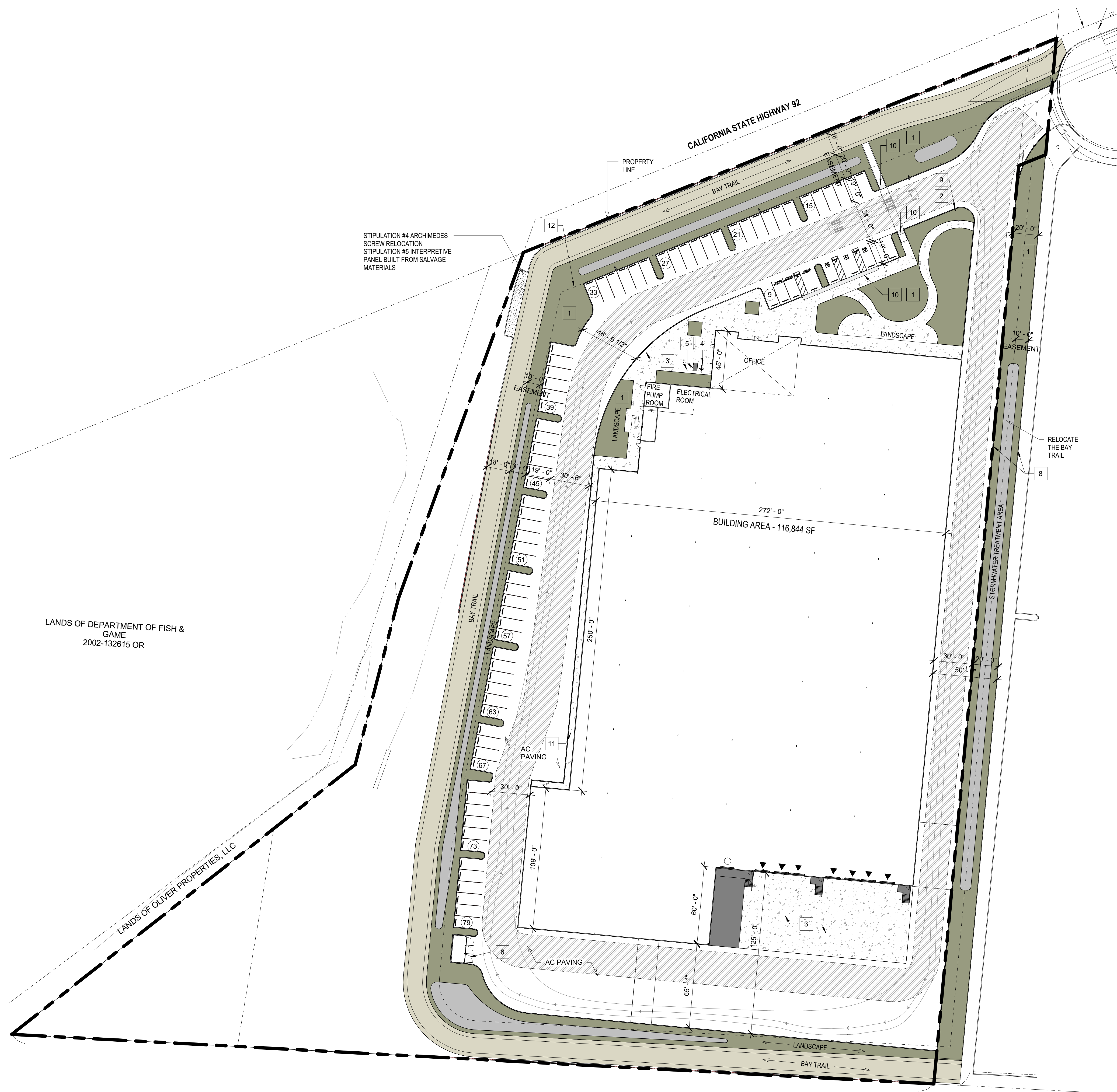
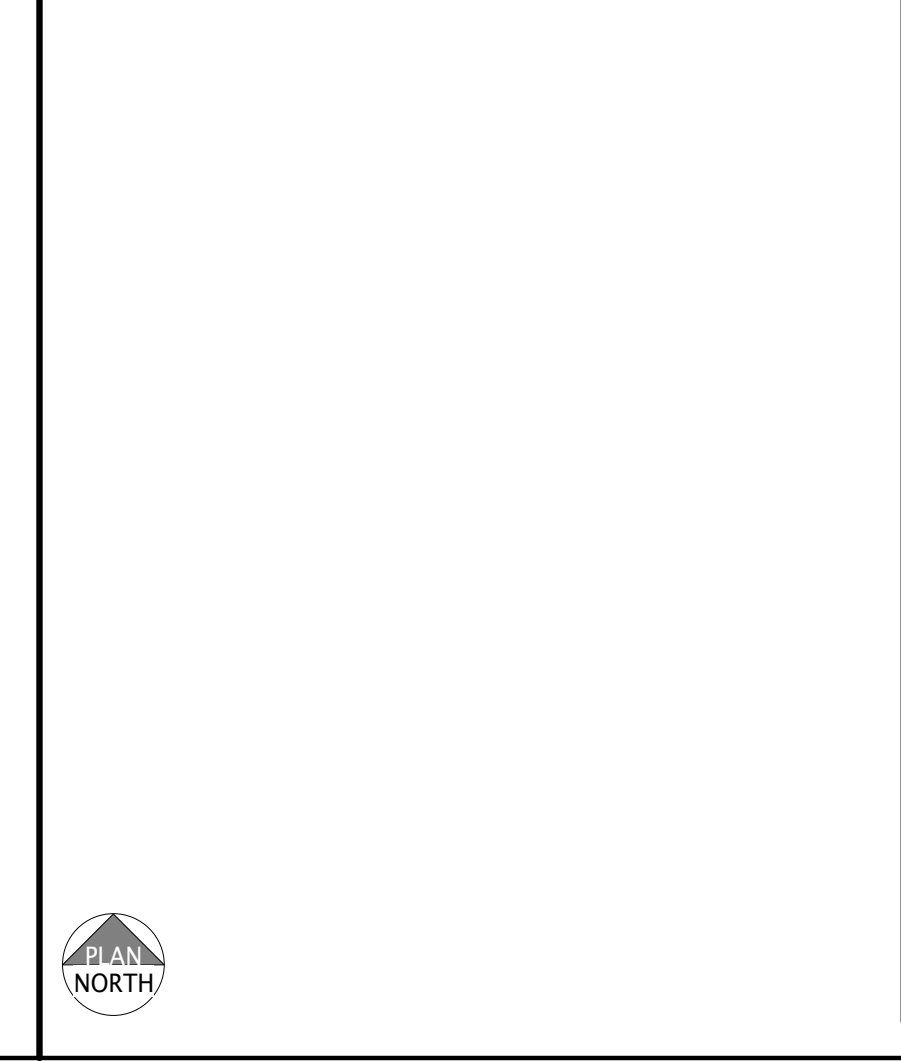
PROJECT DATA

ZONING:	IP- INDUSTRIAL PARK
APN:	461-0085-020-02
NORTH SITE AREA GROSS:	6.83 AC 297,762 SF 8,743 SF 0 SF
DETECTION:	@3.4%
SLOPE:	
EASEMENTS:	
LANDSCAPE:	@16% 45,840 SF
NET:	5.58 AC 243,179 SF
BUILDING FOOTPRINT:	116,844 SF
NORTH BUILDING USE:	WAREHOUSE 114,059 SF OFFICE 2,785 SF
COVERAGE:	GROSS: 38% NET: 47%
PARKING REQUIRED:	WAREHOUSE 1/2000_SF 58 STALLS OFFICE 1/250_SF 11 STALLS TOTAL 69 STALLS
PARKING PROVIDED:	AUTO 79 STALLS REQ. ACCESSIBLE 2 STALLS REQ. EV 2 STALLS BIKE STALL 2 STALLS BIKE LOCKER 2 STALLS BIKE LOCKER 2 SPACES
BUILDING TRUCK DOCKS:	10X10 DOCK - HIGH OH DOORS 7 12X10 GRADE LEVEL OH DOORS 1

- KEY NOTES**
- IRRIGATED AREA, SEE LANDSCAPE L1.01
 - ACCESSIBLE ENTRY SIGNAGE
 - CONCRETE PAVEMENT
 - BIKE RACK, SEE DETAIL 8/A-602
 - BIKE LOCKERS
 - TRASH ENCLOSURE PER CITY STANDARDS, SEE DETAIL 3/A-602
 - N/A
 - EXISTING FENCE TO BE REMOVED
 - FIRE LANE ENTRY SIGNAGE
 - ACCESSIBLE CURB RAMP WITH TRUNCATED DOMES
 - SIDE WALK
 - EASEMENT AS PER CITY REQUIREMENTS

GENERAL NOTES

- SITE LEGEND**
- TRANSFORMER WITH CONCRETE PAD
 - PARKING STALL COUNT TOTAL
 - DOCK HIGH TRUCK DOOR
 - 26' FIRE LANE
 - GRADE LEVEL TRUCK DOOR
 - PROPERTY LINE
 - LANDSCAPE
 - EASEMENT



STIPULATION #4 ARCHIMEDES SCREW RELOCATION
STIPULATION #5 INTERPRETIVE PANEL BUILT FROM SALVAGE MATERIALS

LANDS OF DEPARTMENT OF FISH & GAME
2002-132615 OR

LANDS OF OLIVER PROPERTIES, LLC

1 SITE PLAN
1" = 40'-0"

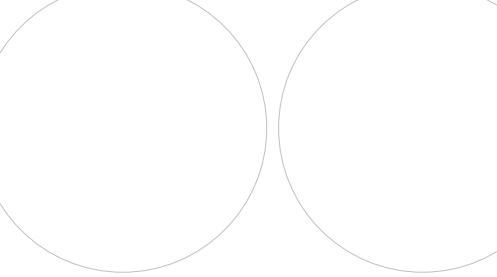
3/12/2021 11:41:02 AM BIM 360://U-Haul Hayward/U-Haul Hayward_sahm02EL.rvt



4750 Willow Road #250 Pleasanton, CA 94588 - T 925.648.8800
 3009 Douglas Blvd #200 Roseville, CA 95661 - T 916.772.1800
 3050 Pullman Street Costa Mesa, CA 92626 - T 714.338.1600

CONSULTANT:

PROFESSIONAL STAMP:



AGENCY APPROVAL:

ITEM:	REVISION/ISSUE:	DATE:
A	PLANNING SUBMITTAL	01/27/20
B	PLANNING RESUBMITTAL	04/24/20

KEY PLAN:

Owner

**U-HAUL COMPANY OF
SAN FRANCISCO**

4150 POINT EDEN WAY

**RENDERED
EXTERIOR VIEWS**

DRAWN BY: RS CHECKED BY: RFT
 DATE: 03/30/2020 PROJECT NO: U2301
 SHEET NO:



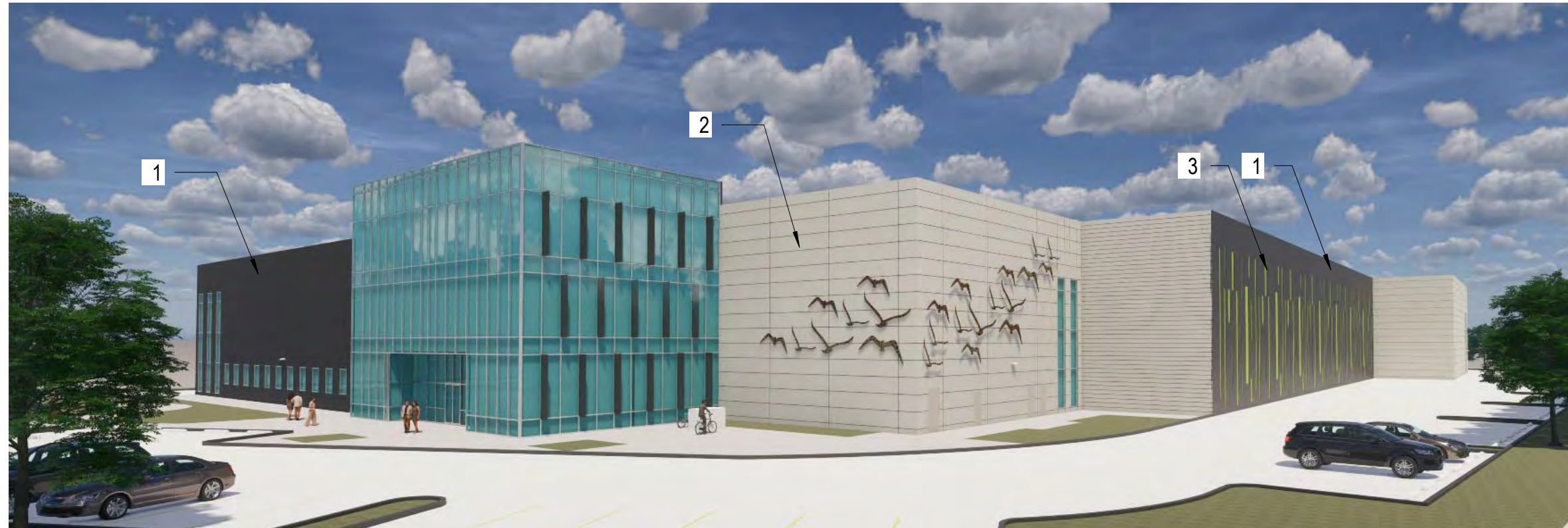
FRONT VIEW



NORTH-WEST VIEW



WEST VIEW



1
CENTRIA METAL
PANEL
154 DARK BRONZE



2
STOREFRONT
SYSTEM



1
CENTRIA METAL
PANEL
154 DARK BRONZE



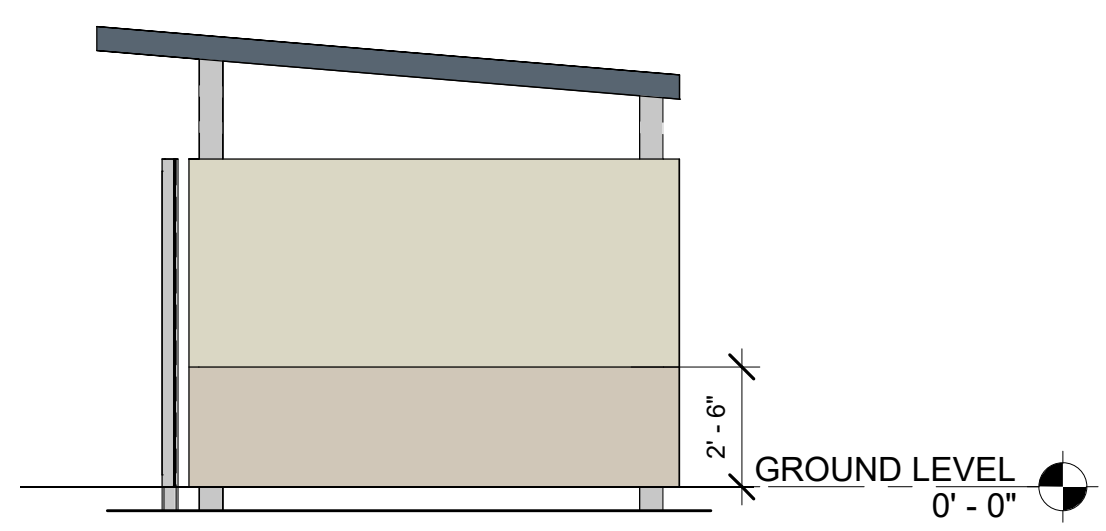
MATERIAL BOARD

Project number	U2301
Date	03/30/2020
Drawn by	RS
Checked by	RFT

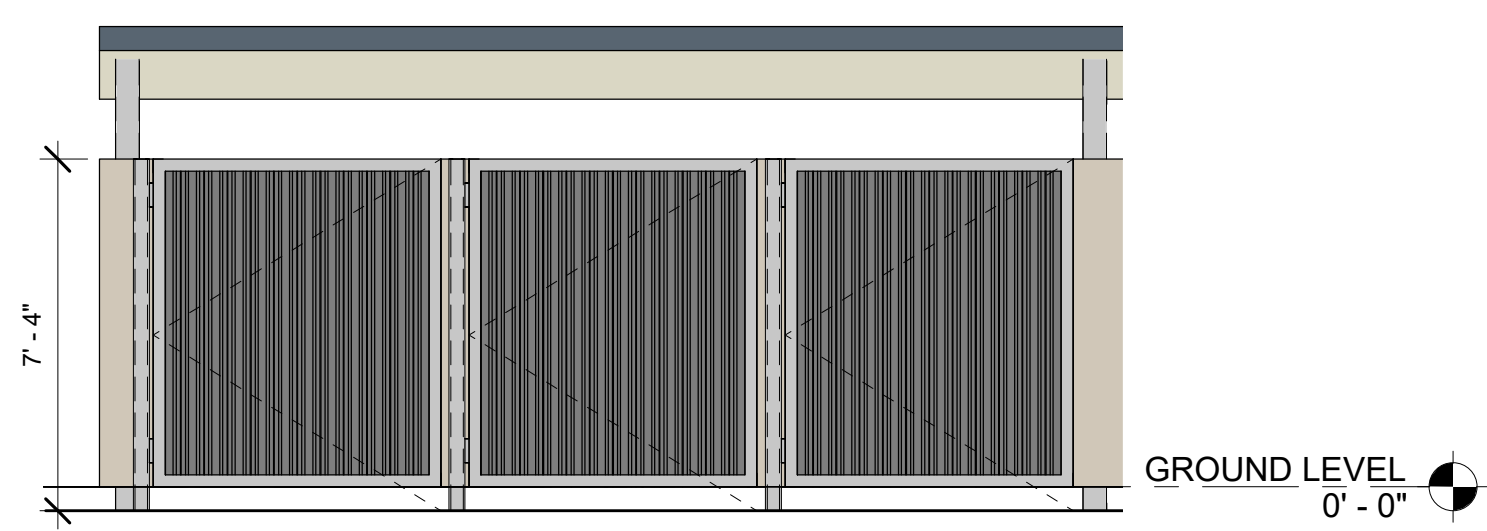
A-502

Scale 1 1/2" = 1'-0"

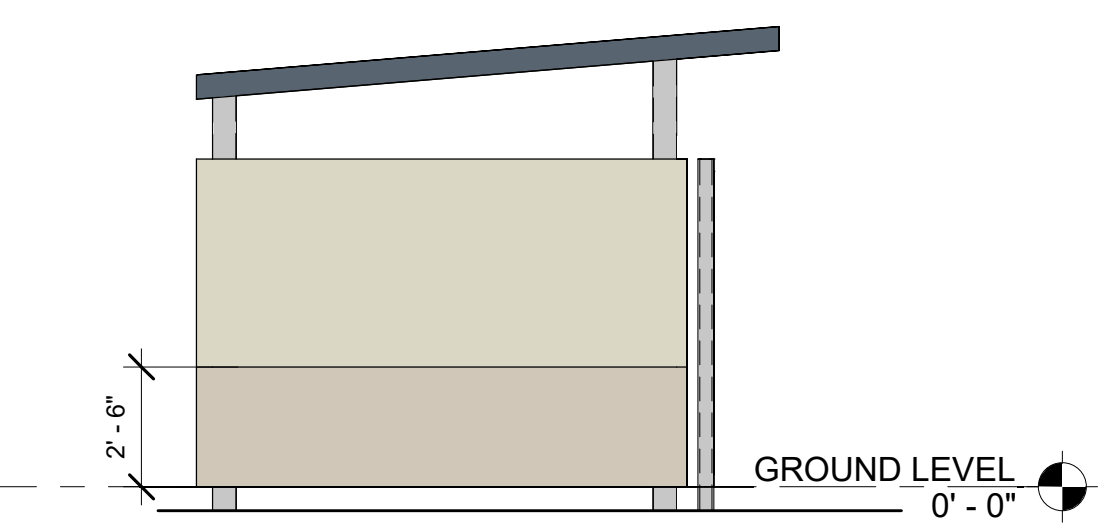
4/24/2020 5:41:23 PM



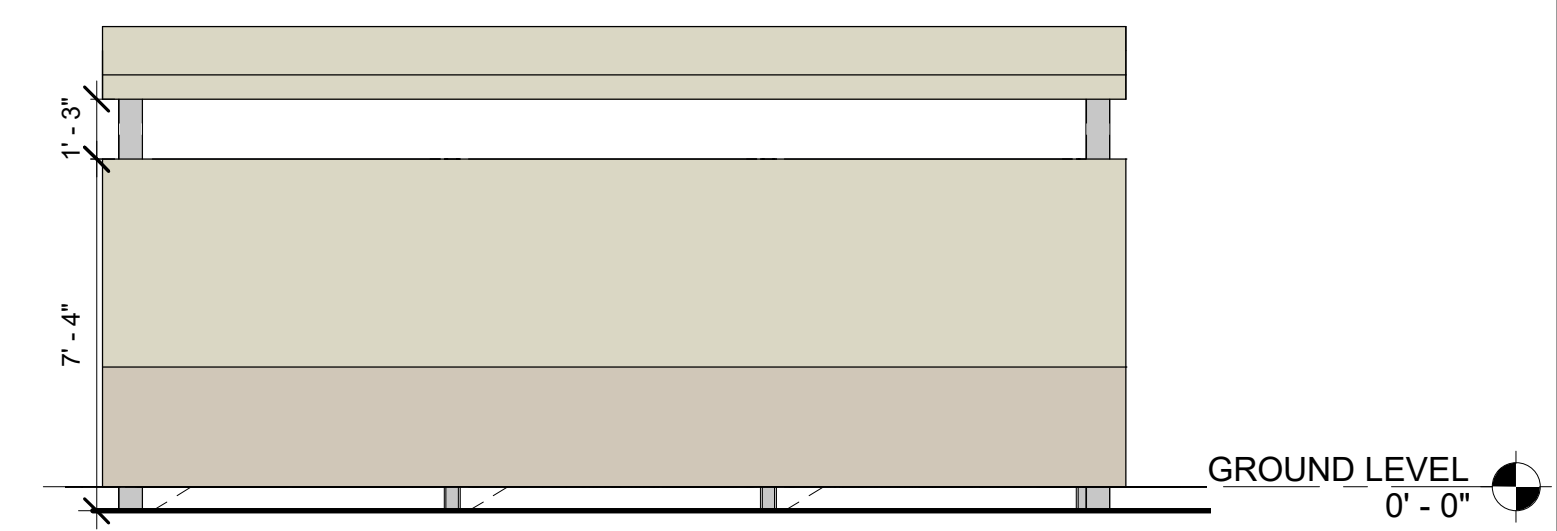
16 NORTH - TRASH ENCLOSURE
 1/4" = 1'-0"



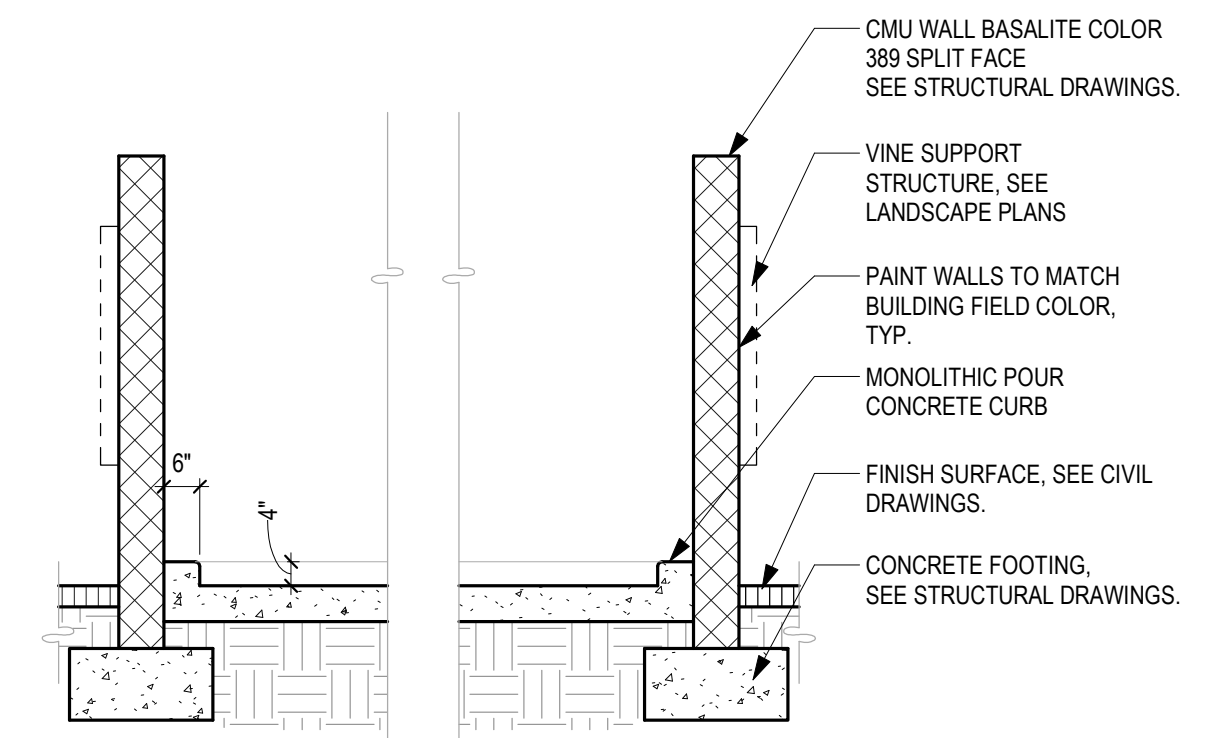
12 EAST ELEVATION - TRASH ENCLOSURE
 1/4" = 1'-0"



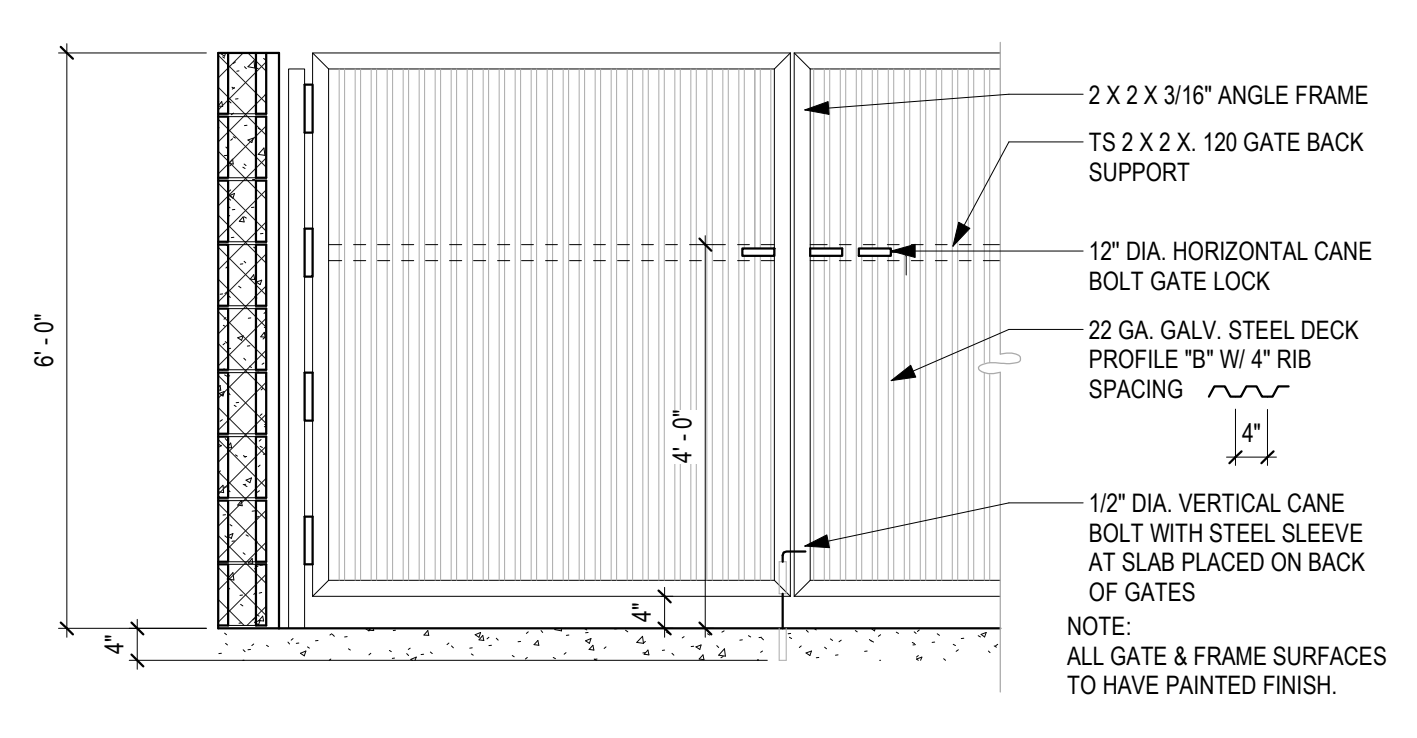
8 SOUTH ELEVATION - TRASH ENCLOSURE
 1/4" = 1'-0"



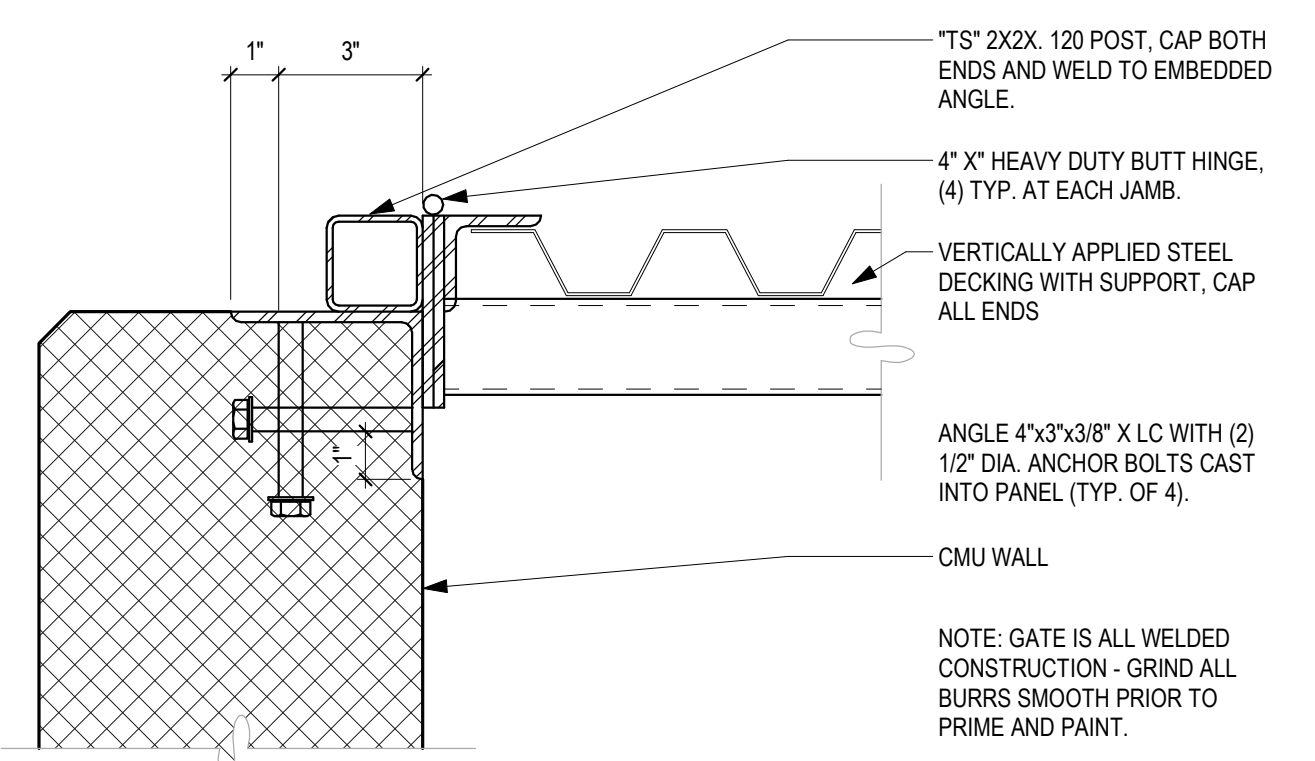
4 WEST ELEVATION - TRASH ENCLOSURE
 1/4" = 1'-0"



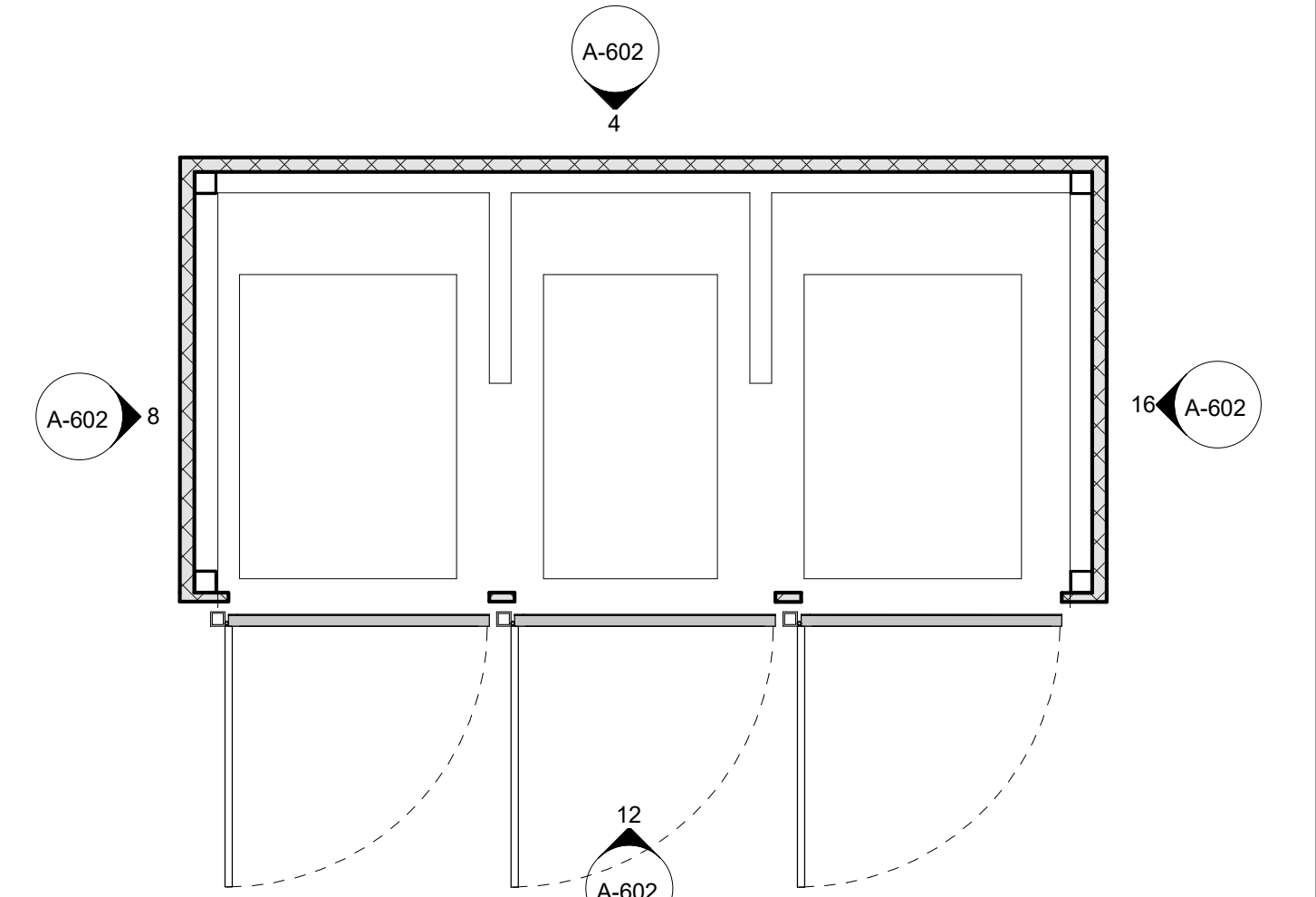
15 TRASH ENCLOSURE SECTION
 3/8" = 1'-0"



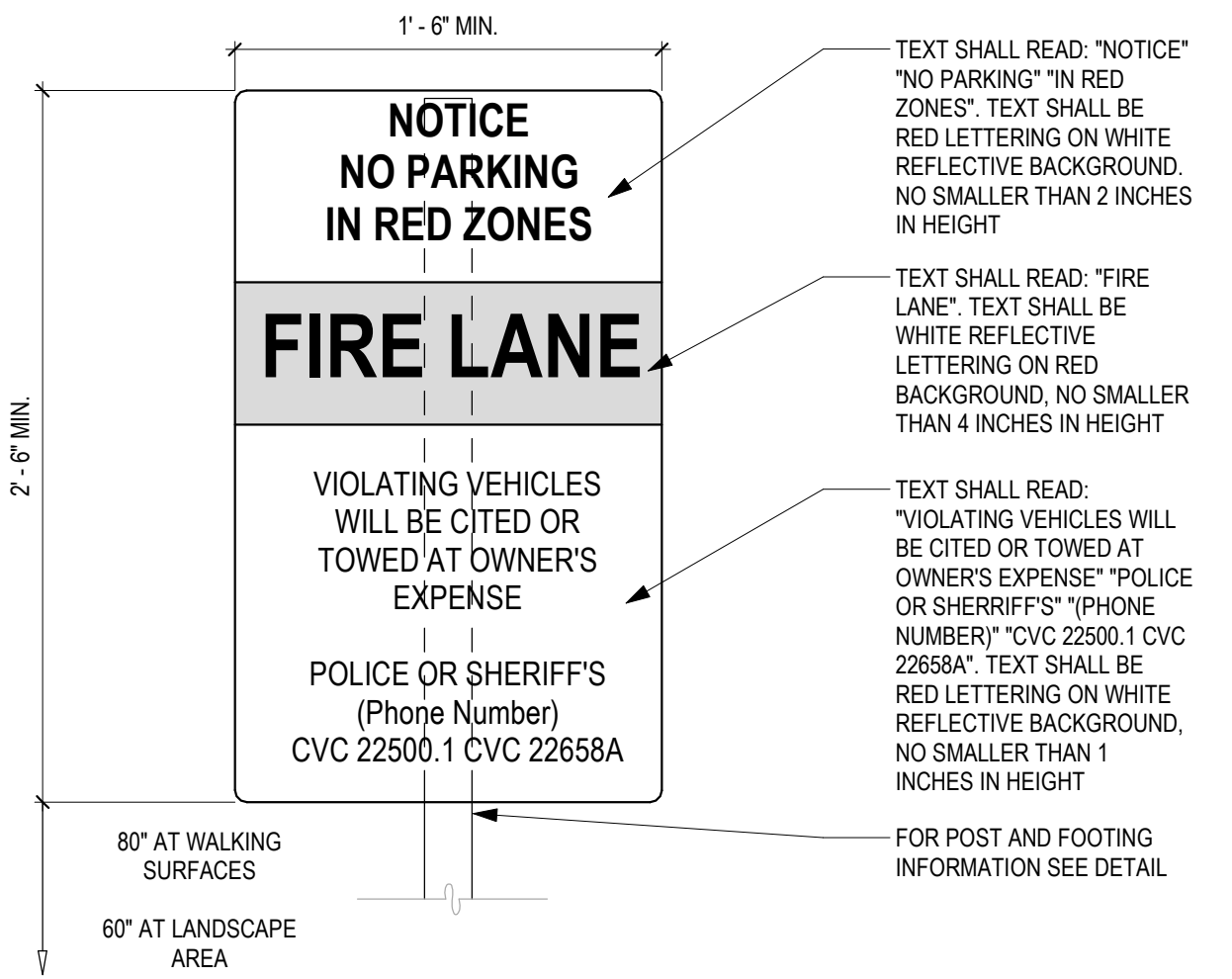
11 TRASH ENCLOSURE GATE
 1/2" = 1'-0"



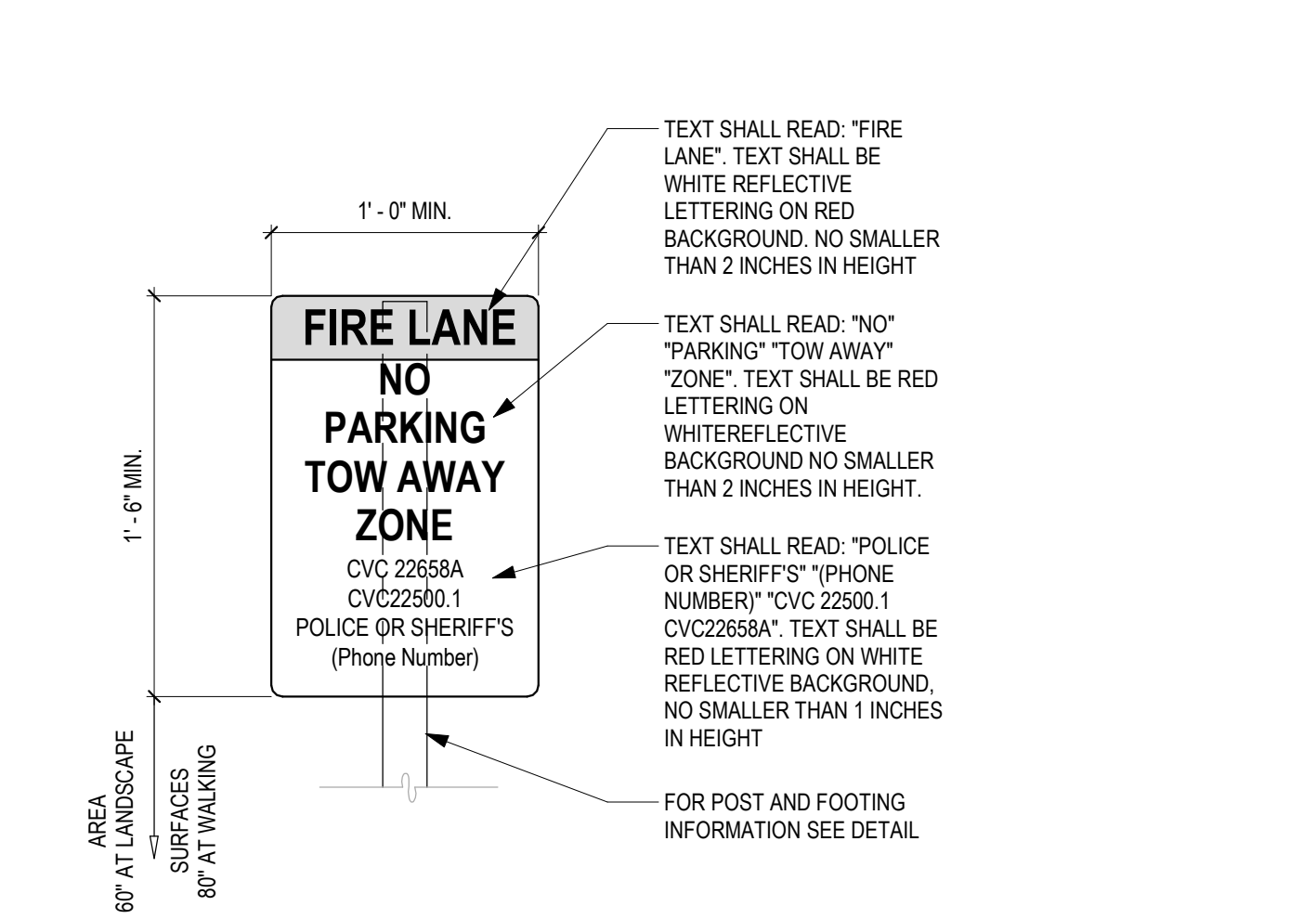
7 TRASH GATE JAMB AT CMU
 3" = 1'-0"



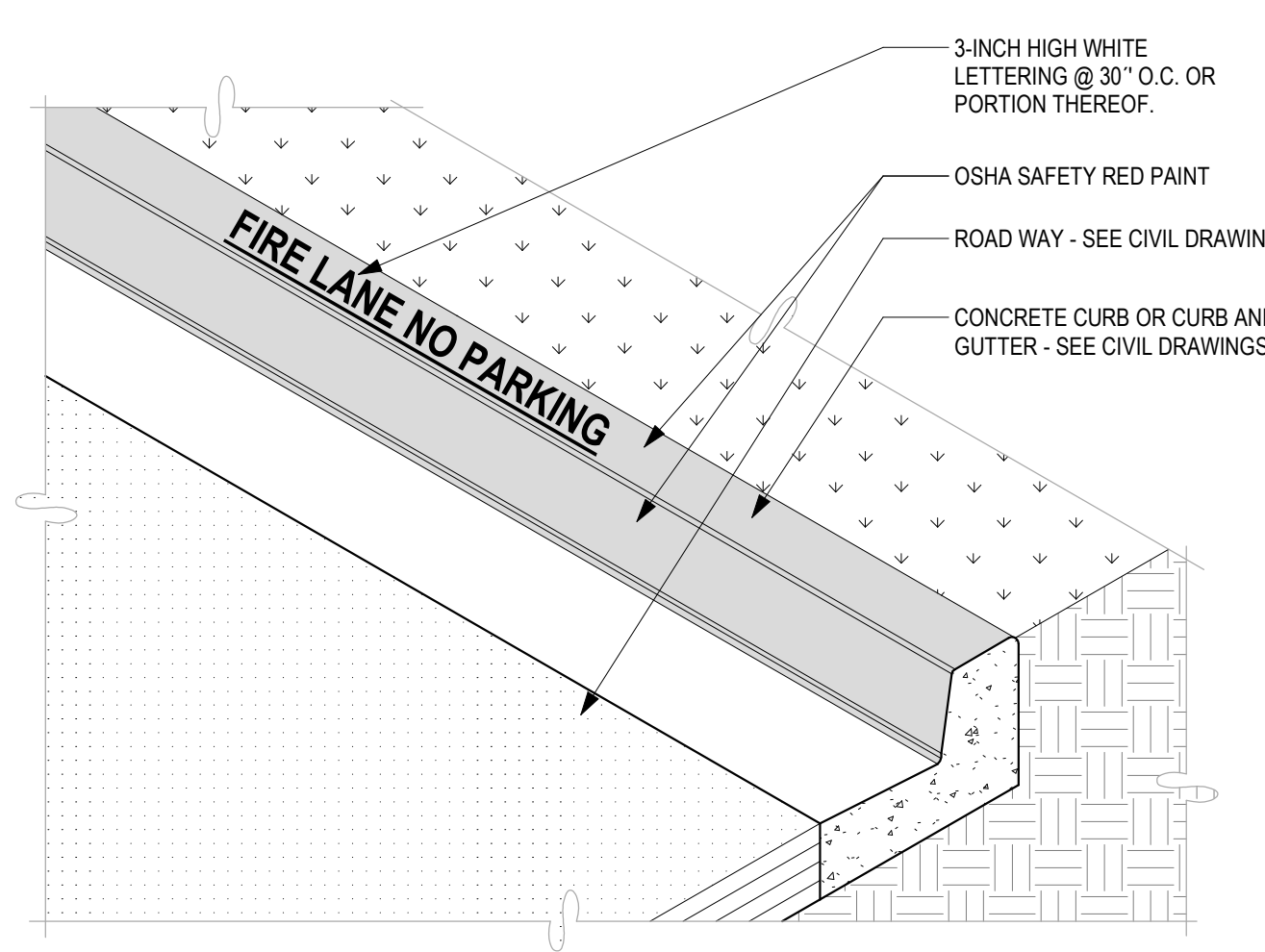
3 TRASH ENCLOSURE
 1/4" = 1'-0"



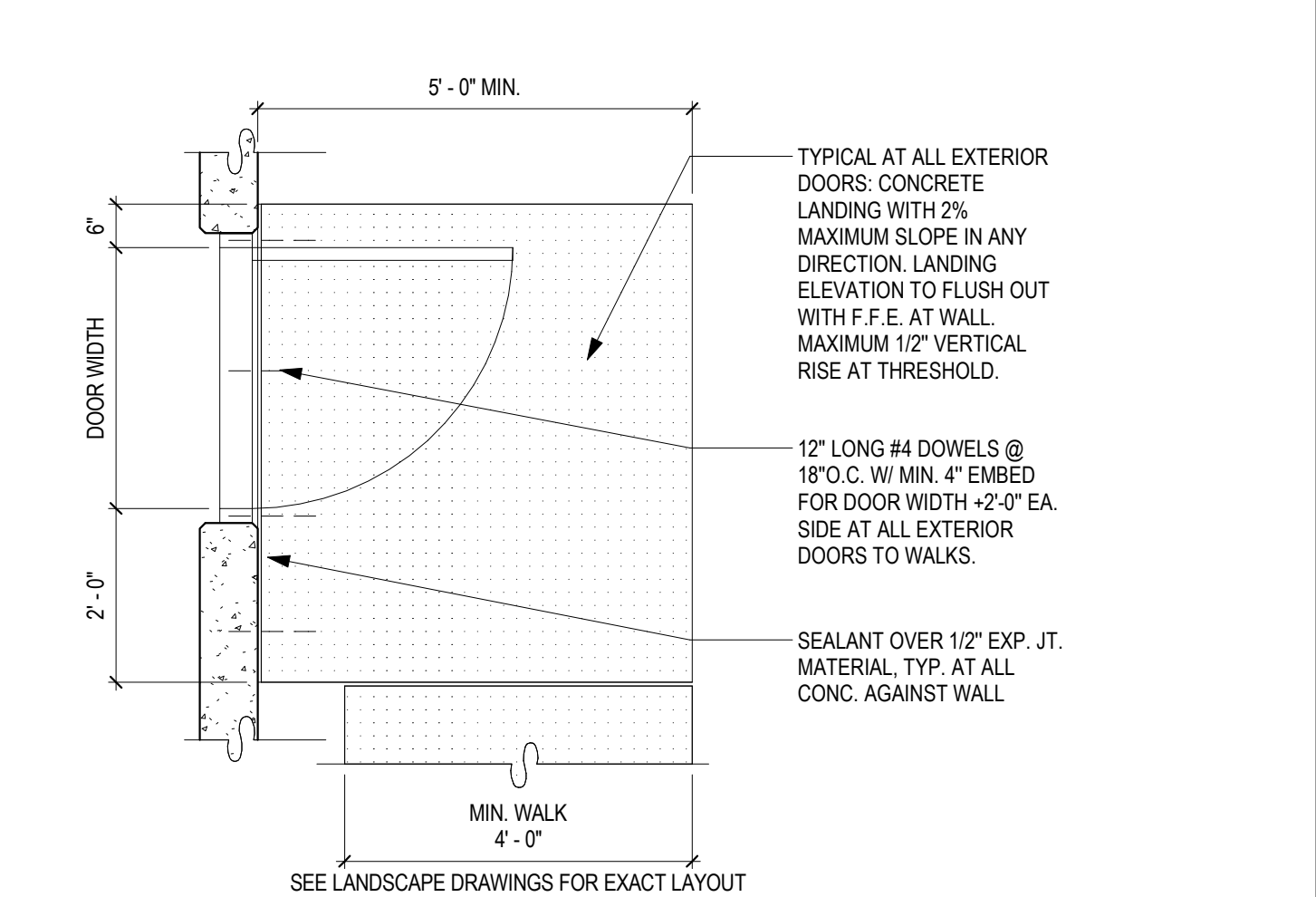
14 FIRELANE ENTRY SIGNAGE
 1 1/2" = 1'-0"



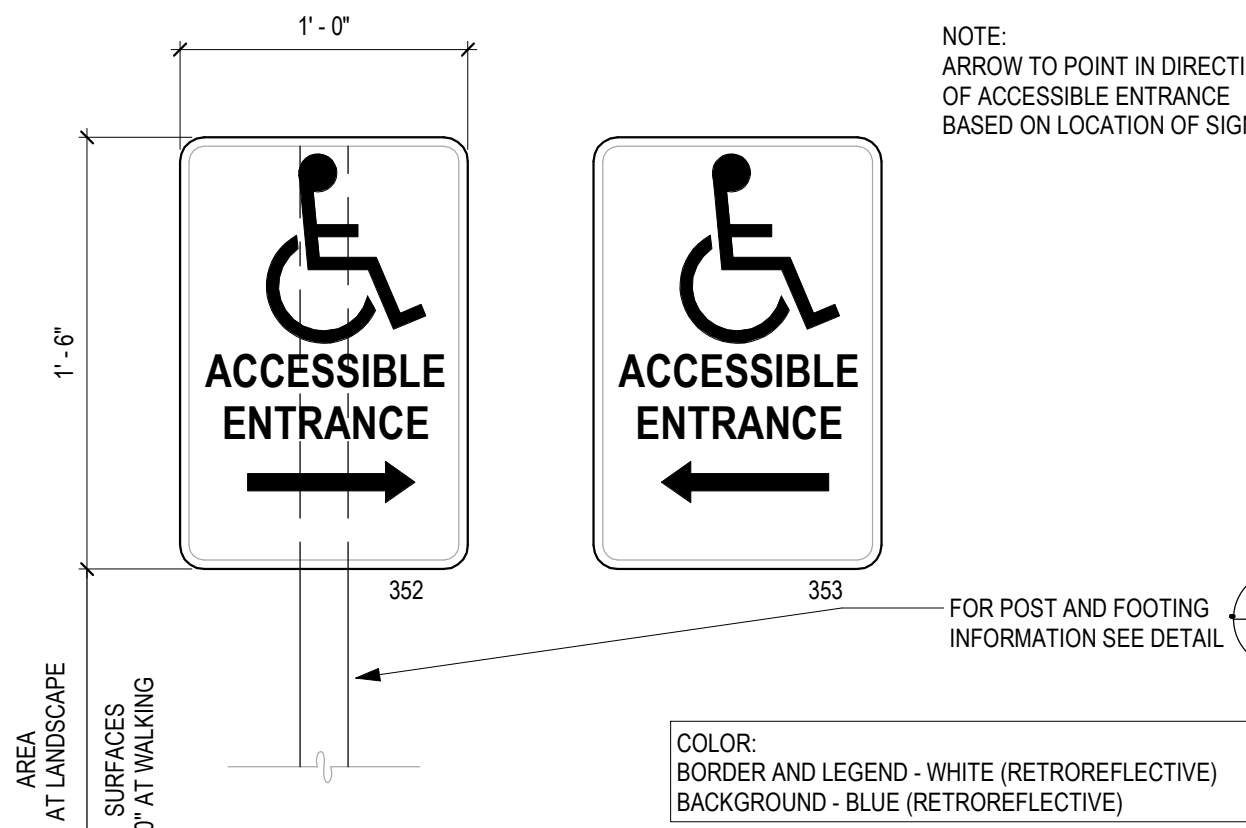
10 FIRELANE SIGNAGE
 1 1/2" = 1'-0"



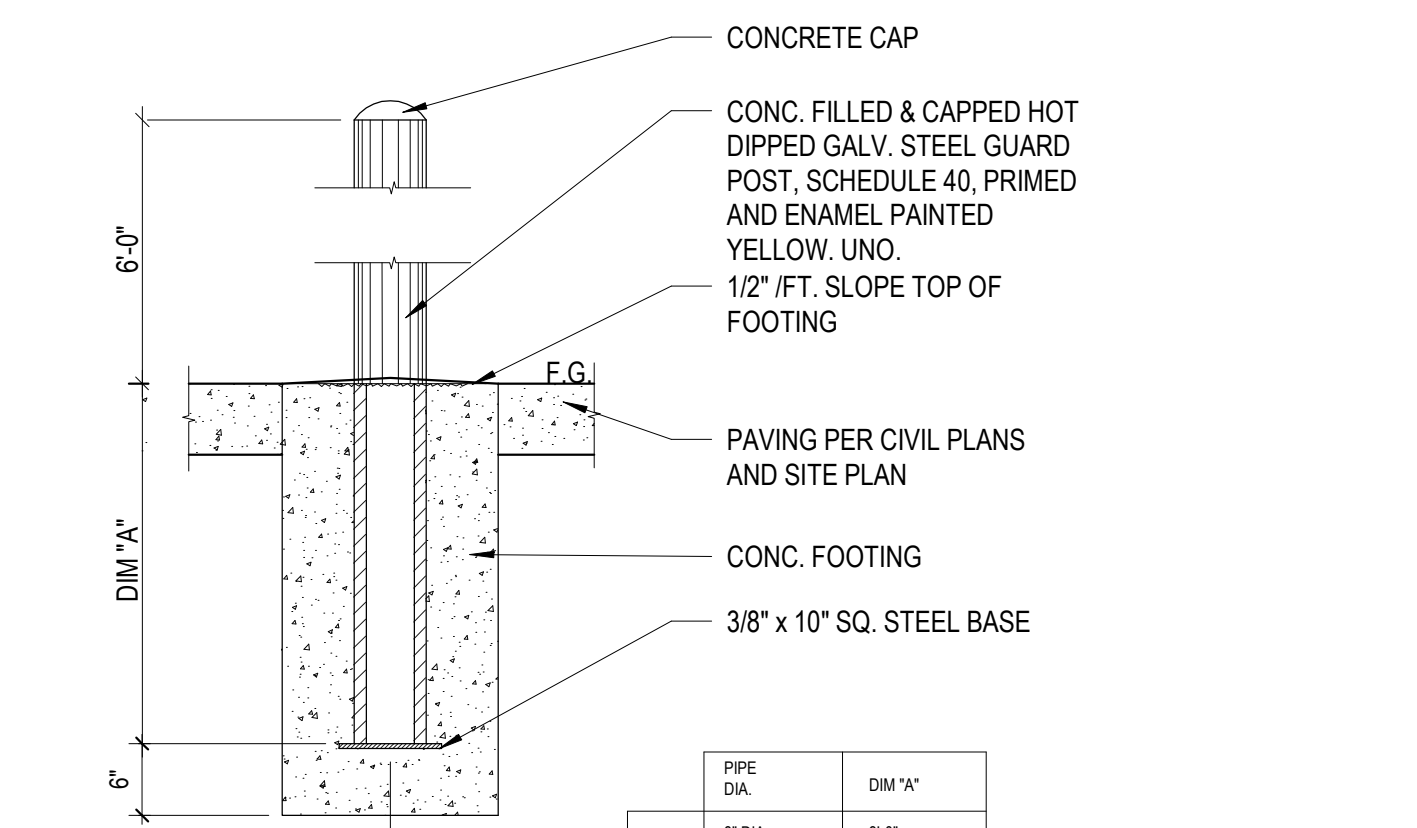
6 FIRE LANE CURB
 3/4" = 1'-0"



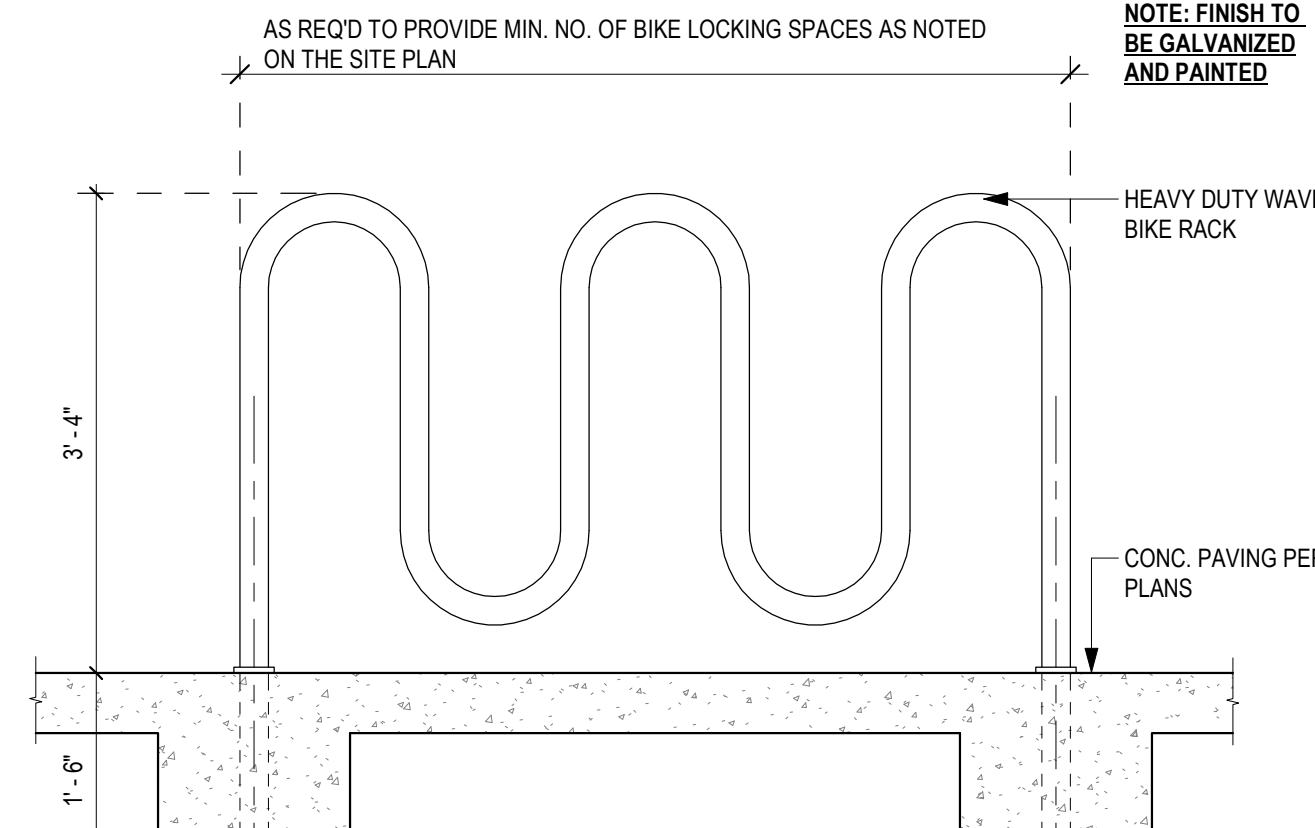
2 CONCRETE LANDING
 1/2" = 1'-0"



13 ACCESSIBLE DIRECTION SIGN
 1 1/2" = 1'-0"



9 EXTERIOR BOLLARD
 3/4" = 1'-0"



5 BIKE RACK 7 SPACES
 3/4" = 1'-0"

PROFESSIONAL STAMP:
 AGENCY APPROVAL:

ITEM:	REVISION/ISSUE:	DATE:
A	PLANNING SUBMITTAL	01/27/20
B	PLANNING RESUBMITTAL	04/24/20

KEY PLAN:

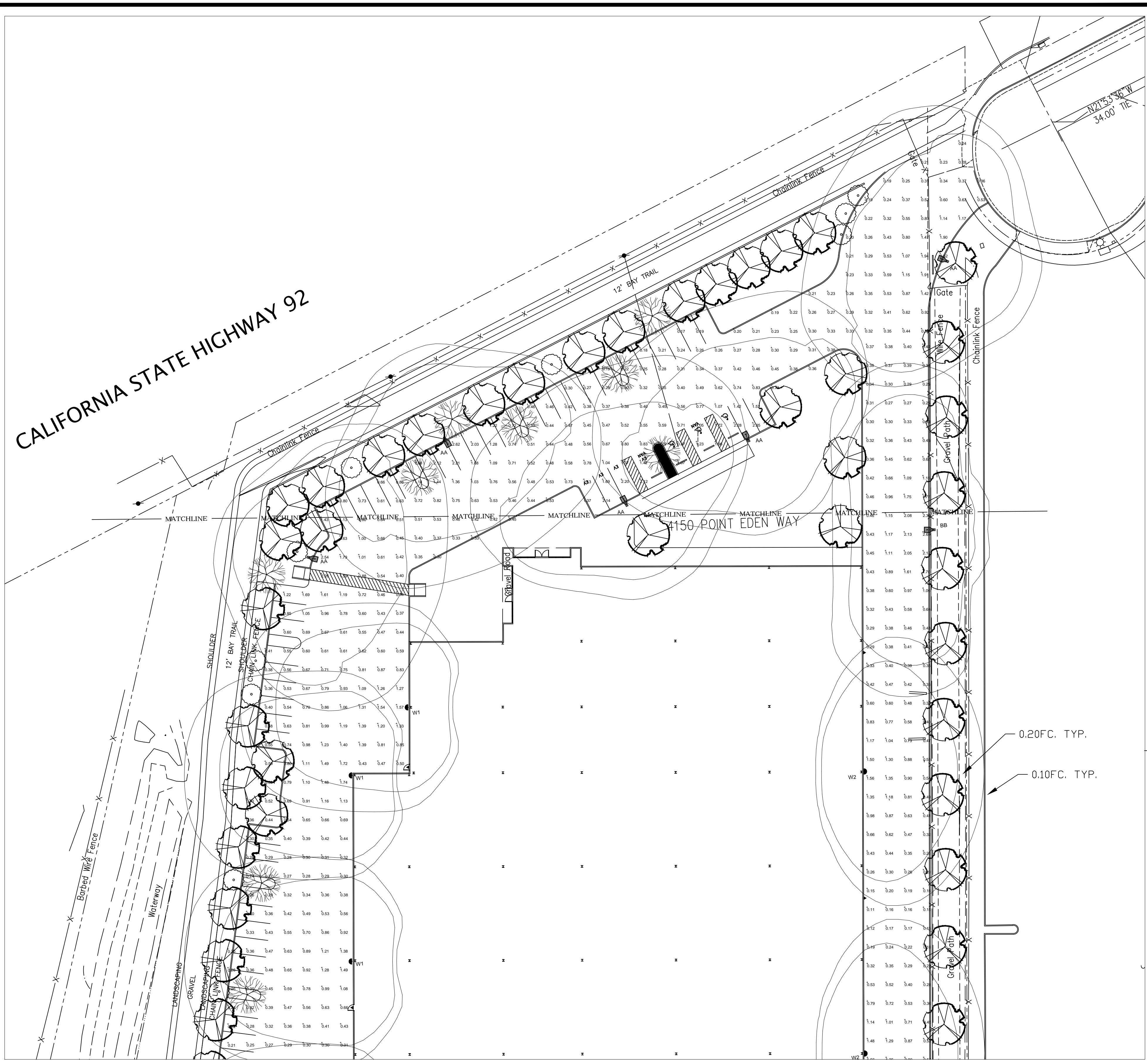
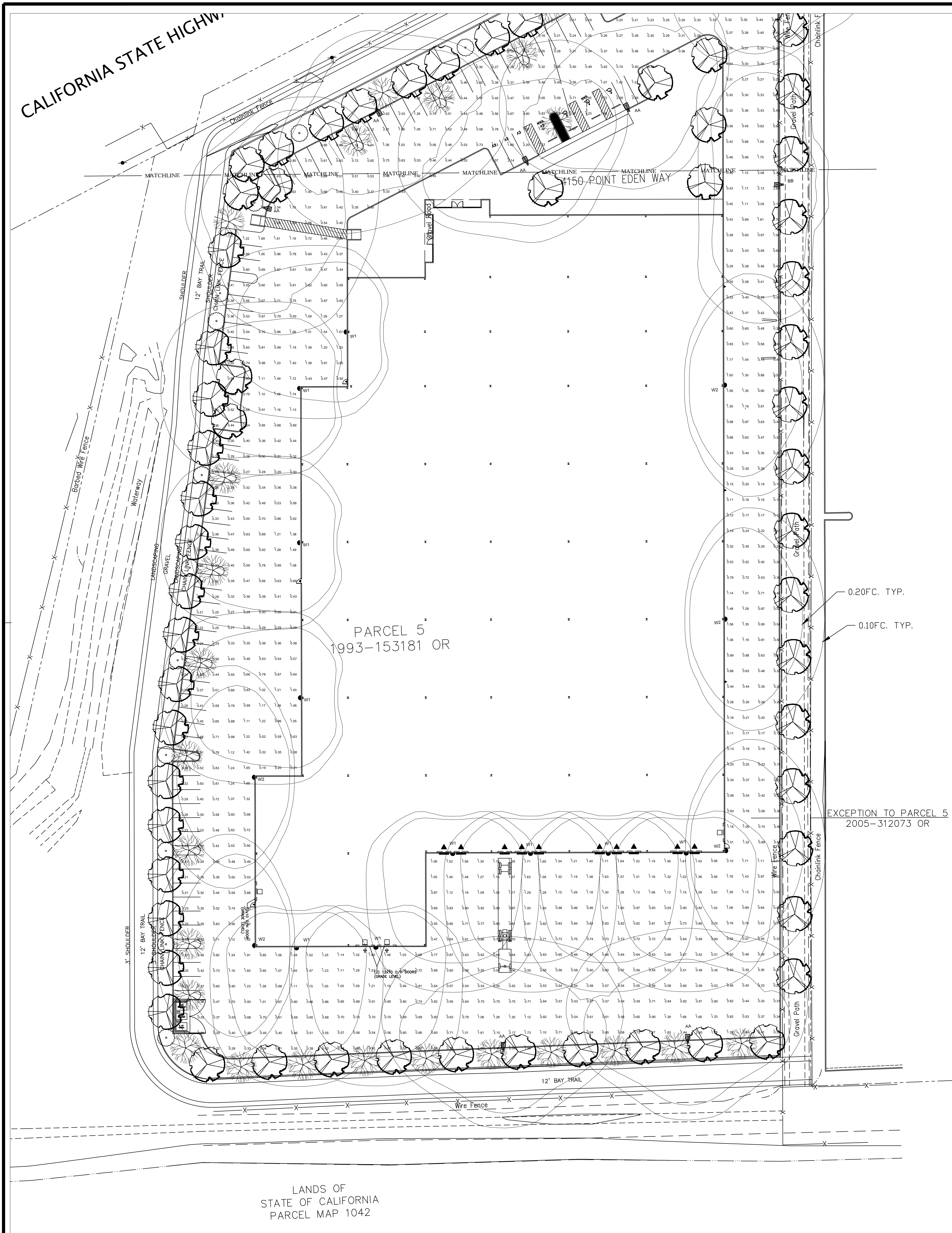
Owner
U-HAUL COMPANY OF SAN FRANCISCO

4150 POINT EDEN WAY

TRASH ENCLOSURE & OTHER DETAILS

DRAWN BY: Author CHECKED BY: Checker
 DATE: 03/30/2020 PROJECT NO: U2301
 SHEET NO:

A-602



Luminaire Schedule - LED

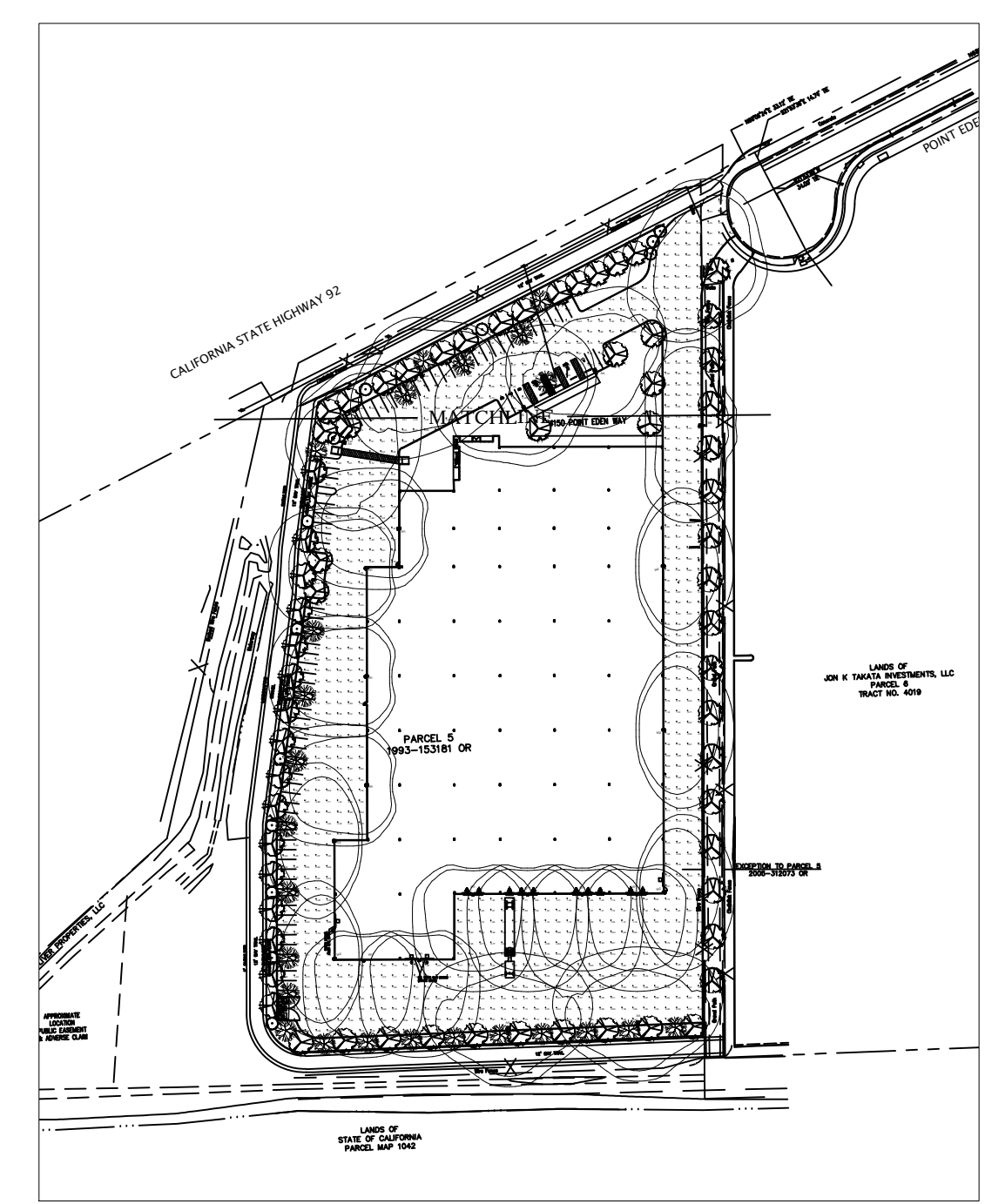
Project: U-HAUL - HAYWARD

Symbol	Qty	Label	Arrangement	Lum. Watts	Lum. Lumens	LLF	LLD	LDD	UDF	Description	Filename
AA	7	AA	SINGLE	52,770.3	8059	0.900	0.900	1.000	1.000	AR13-48N-MV-NW-4-XX-080	AR13-48N-MV-NW-4-XX-080.ies
BB	1	BB	SINGLE	52,823.3	7941	0.900	0.900	1.000	1.000	AR13-48N-MV-NW-3-XX-080	AR13-48N-MV-NW-3-XX-080.ies
W1	10	W1	SINGLE	58.7	5738	0.900	0.900	1.000	1.000	ES1-24H-MV-NW-FT-XX-700	IES ES1-24H-MV-NW-FT-XX-700.05
W2	5	W2	SINGLE	58.6	5771	0.900	0.900	1.000	1.000	ES1-24H-MV-NW-W-XX-700	IES ES1-24H-MV-NW-W-XX-700.040

Calculation Summary

Project: U-HAUL - HAYWARD

Description	CalcType	Units	Grid Z	Avg	Max	Min	Avg/Min	Max/Min
AUTO PARKING AND PAVED DRIVES	Illuminance	Fc	0	0.68	2.62	0.17	4.00	15.41
EAST TRUCK DRIVE	Illuminance	Fc	0	0.60	2.69	0.11	5.45	24.45
TRUCK LOAD - UNLOAD AREA	Illuminance	Fc	0	0.84	2.54	0.20	4.20	12.70



ALL VALUES SHOWN ARE MAINTAINED HORIZONTAL FOOTCANDLES AT GRADE

PHOTOMETRIC DATA USED AS INPUT FOR THESE CALCULATIONS IS BASED ON ESTABLISHED IES PROCEDURES AND PUBLISHED LAMP RATINGS. FIELD PERFORMANCE WILL DEPEND ON ACTUAL LAMP, BALLAST, ELECTRICAL, AND SITE CHARACTERISTICS.

Calculations have been performed according to IES standards and good practice. Some differences between measured values and calculated results may occur due to tolerances in calculation methods, testing procedures, component performance, measurement techniques and field conditions such as voltage and temperature variations. Input data used to generate the attached calculations such as room dimensions, reflectances, furniture and architectural elements significantly affect the lighting calculations. If the real environment conditions do not match the input data, differences will occur between measured values and calculated values.

Associated Lighting Representatives, Inc.

ASSOCIATED LIGHTING REPRESENTATIVES, INC.
7777 PARDEE LANE
P.O. BOX 2265
OAKLAND, CA 94621
PHONE: (510) 638-0158 - FAX (510) 638-2908

REPORT FOR: ATI ARCHITECTS + ENGINEERS
BY: APPLICATIONS ENGINEERING; RAMON ZAPATA
SALES REPRESENTATIVE: ALR; TIM HALEY

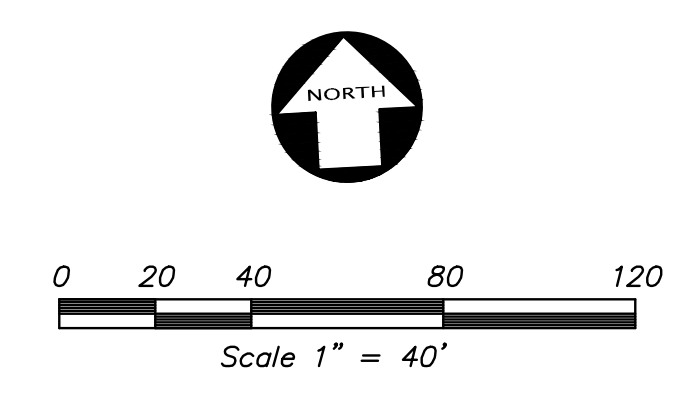
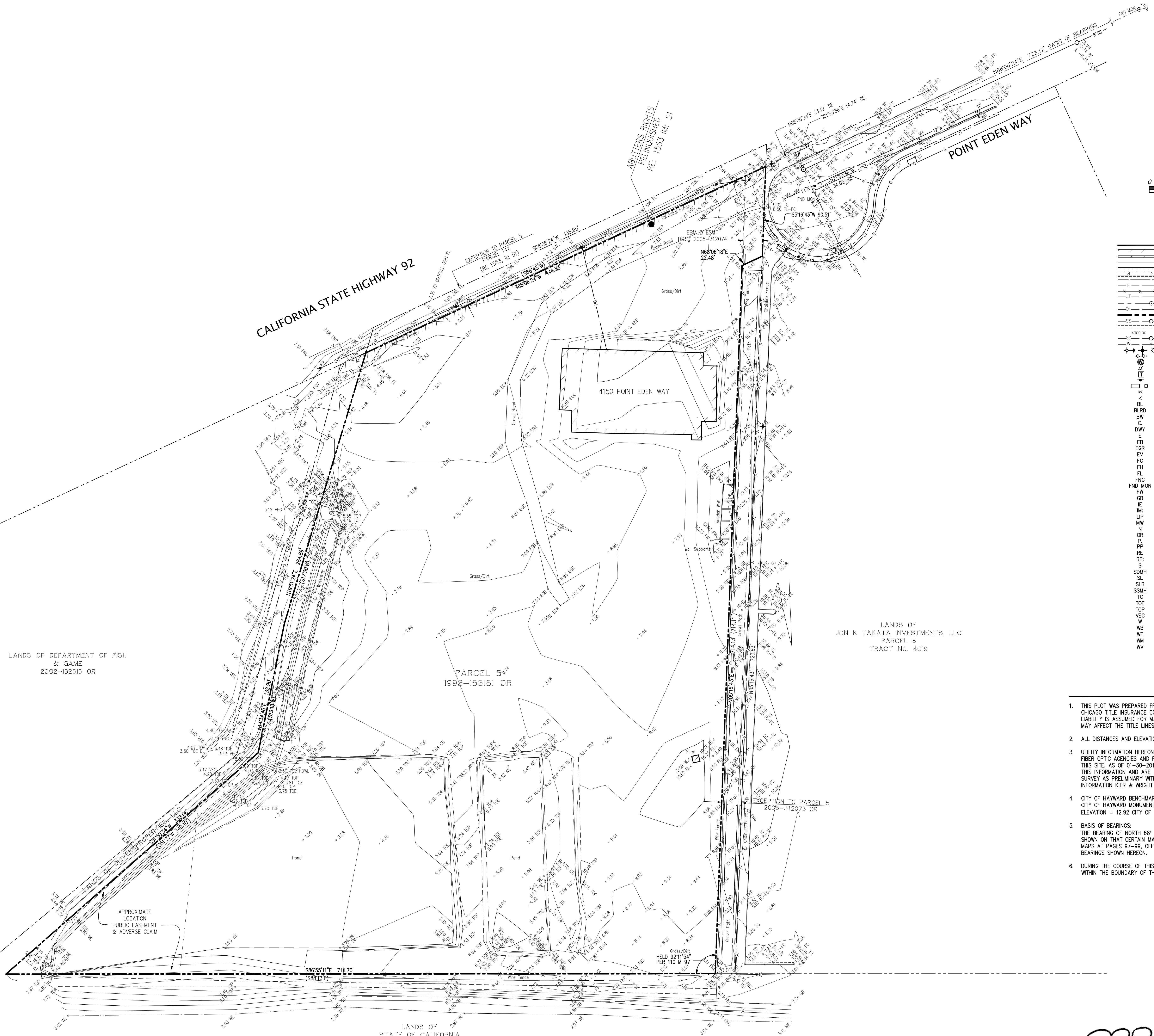
AGI32 VERSION 18.11
AGI (C) 2019 LIGHTING ANALYSTS, INC.
10288 W. CENTENNIAL ROAD, SUITE 202
LITTLETON, CO 80127

PROJECT DESCRIPTION

U-HAUL
CITY OF HAYWARD

DRAWING NO. / INPUT FILE
17579HAL.DWG / 17579HAL.A32

SCALE 1" = 30'	SHEET 1 OF 1	DATE 01.03.2019	REV X
-------------------	-----------------	--------------------	----------



LEGEND

(Symbol)	BUILDING LINE
(Symbol)	CONCRETE/BLOCK/RETAINING WALL
(Symbol)	CONCRETE CURB
(Symbol)	CONCRETE CURB & GUTTER
(Symbol)	DRIVEWAY
(Symbol)	EDGE OF PAVEMENT
(Symbol)	FENCE LINE
(Symbol)	JOINT TRENCH
(Symbol)	MONUMENT/MONUMENT LINE
(Symbol)	OVERHEAD POWER LINE
(Symbol)	PROPERTY LINE
(Symbol)	SANITARY SEWER-MANHOLE & CLEANOUT
(Symbol)	SIDEWALK
(Symbol)	SPOT ELEVATION
(Symbol)	STORM DRAIN-MANHOLE & CATCH BASIN
(Symbol)	WATER LINE & VALVE
(Symbol)	ELECTROLEAK
(Symbol)	FIRE HYDRANT
(Symbol)	MONITORING WELL
(Symbol)	POWER POLE/JOINT POLE
(Symbol)	TRANSFORMER
(Symbol)	TRAFFIC SIGN
(Symbol)	UTILITY BOX
(Symbol)	WATER VALVE
(Symbol)	ANGLE POINT
(Symbol)	BUILDING LINE
(Symbol)	BOLLARD
(Symbol)	BACK OF WALK
(Symbol)	CONCRETE
(Symbol)	DRIVEWAY
(Symbol)	EAST
(Symbol)	EB
(Symbol)	ELECTRIC BOX
(Symbol)	EDGE OF GRAVEL ROAD
(Symbol)	ELECTRICAL VAULT
(Symbol)	FC
(Symbol)	FACE OF CURB
(Symbol)	FH
(Symbol)	FIRE HYDRANT
(Symbol)	FL
(Symbol)	FLOWLINE
(Symbol)	FNC
(Symbol)	FENCE
(Symbol)	FOUND MONUMENT
(Symbol)	FACE OF WALL
(Symbol)	GB
(Symbol)	GRADE BREAK
(Symbol)	IE
(Symbol)	INVERT ELEVATION
(Symbol)	IM
(Symbol)	IMAGE
(Symbol)	LIP
(Symbol)	LIP OF GUTTER
(Symbol)	MW
(Symbol)	MONITORING WELL
(Symbol)	N
(Symbol)	NORTH
(Symbol)	OR
(Symbol)	OFFICIAL RECORDS
(Symbol)	P
(Symbol)	PAVEMENT
(Symbol)	PP
(Symbol)	POWER POLE
(Symbol)	RE
(Symbol)	RIM ELEVATION
(Symbol)	REEL
(Symbol)	S
(Symbol)	SOUTH
(Symbol)	SDMH
(Symbol)	STORM DRAIN MANHOLE
(Symbol)	SL
(Symbol)	STREET LIGHT
(Symbol)	SLB
(Symbol)	STREET LIGHT BOX
(Symbol)	SSMH
(Symbol)	SANITARY SEWER MANHOLE
(Symbol)	TC
(Symbol)	TOP OF CURB
(Symbol)	TOE
(Symbol)	GRADE BREAK LINE TOE
(Symbol)	TOP
(Symbol)	EDGE OF VEGETATION
(Symbol)	VEG
(Symbol)	WEST
(Symbol)	W
(Symbol)	WATER BOX
(Symbol)	WE
(Symbol)	WATER EDGE
(Symbol)	WM
(Symbol)	WATER METER
(Symbol)	WW
(Symbol)	WATER VALVE

- ### NOTES
- THIS PLOT WAS PREPARED FROM INFORMATION FURNISHED IN A PRELIMINARY TITLE REPORT, PREPARED BY CHICAGO TITLE INSURANCE COMPANY, DATED OCTOBER 24, 2014, NUMBER FWAC-1014002350-KD. NO LIABILITY IS ASSUMED FOR MATTERS OF RECORD NOT STATED IN SAID PRELIMINARY TITLE REPORT THAT MAY AFFECT THE TITLE LINES, OR EXCEPTIONS, OR EASEMENTS OF THE PROPERTY.
 - ALL DISTANCES AND ELEVATIONS SHOWN HEREON ARE IN FEET AND DECIMALS THEREOF.
 - UTILITY INFORMATION HEREON IS IN PROGRESS AT THIS TIME. A REQUEST WAS MADE TO THE RESPECTIVE FIBER OPTIC AGENCIES AND PG&E FOR INFORMATION REGARDING THE LOCATION OF THEIR FACILITIES ON THIS SITE. AS OF 01-30-2015, THEY HAD NOT RESPONDED WITH THIS INFORMATION. UNTIL WE RECEIVE THIS INFORMATION AND ARE ABLE TO DELINEATE THESE FACILITIES, ALL PARTIES SHOULD CONSIDER THIS SURVEY AS PRELIMINARY WITH REGARDS TO THE LOCATION OF UTILITY FACILITIES. UPON RECEIPT OF THIS INFORMATION KIER & WRIGHT WILL UPDATE THIS SURVEY AND REISSUE IT.
 - CITY OF HAYWARD BENCHMARK:
CITY OF HAYWARD MONUMENT DISK AT EDEN LANDING ROAD AND POINT EDEN WAY.
ELEVATION = 12.92 CITY OF HAYWARD DATUM (NGVD 1929)
 - BASIS OF BEARINGS:
THE BEARING OF NORTH 68° 06' 24" EAST TAKEN ON THE MONUMENT LINE OF POINT EDEN WAY AS SHOWN ON THAT CERTAIN MAP OF TRACT 4019, FILED FOR RECORD ON JUNE 28, 1979, IN BOOK 110 OF MAPS AT PAGES 97-99, OFFICIAL RECORDS OF ALAMEDA COUNTY WAS TAKEN AS THE BASIS FOR ALL BEARINGS SHOWN HEREON.
 - DURING THE COURSE OF THIS SURVEY, THERE WAS NO OBSERVED EVIDENCE OF WETLANDS MARKERS WITHIN THE BOUNDARY OF THE SUBJECT PROPERTY.

[Signature]
 PREPARED BY OR UNDER THE SUPERVISION OF DATE
 RODNEY A. STEWART II P.L.S. 9/30/17
 LICENSE EXPIRES: 9-30-17



NO.	BY	NO.	REVISION

REGISTERED PROFESSIONAL ENGINEER
RODNEY A. STEWART II
 CIVIL
 STATE OF CALIFORNIA
 LICENSE NO. 9225

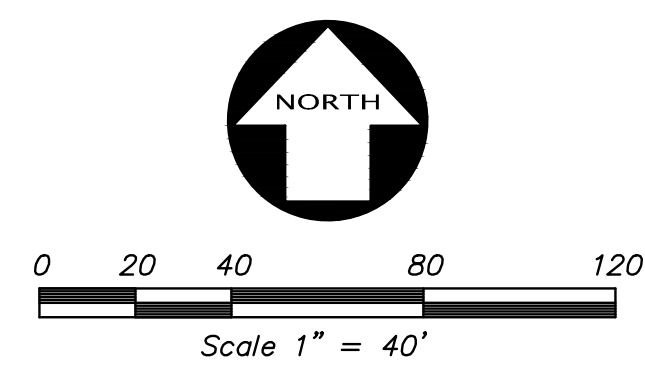
KIER+WRIGHT
 2850 Collier Canyon Road
 Livermore, CA 94551
 Phone: (925) 245-9788
 www.kierwright.com

CALIFORNIA

HAYWARD.

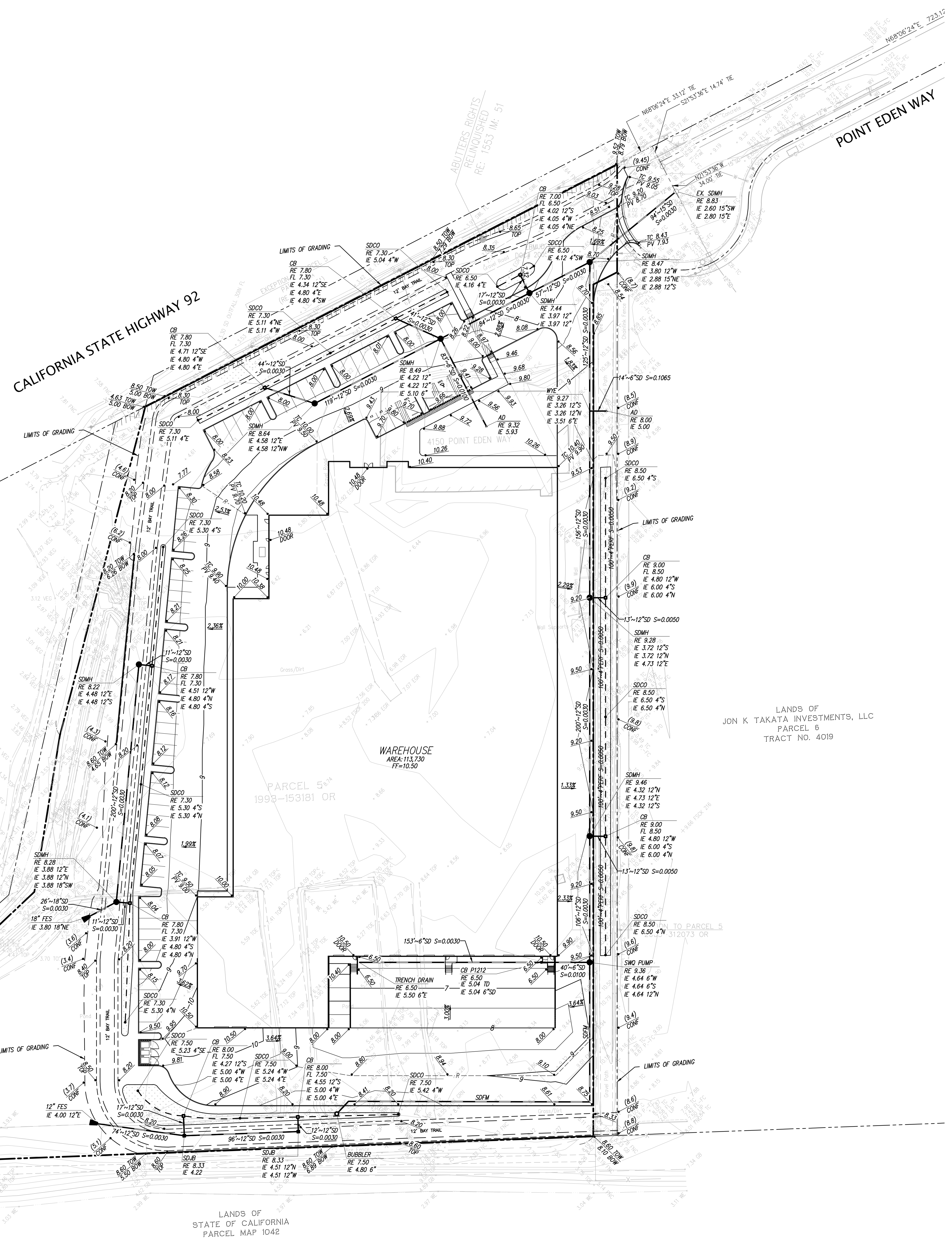
TOPOGRAPHIC SURVEY
 OF
 4150 POINTE EDEN WAY
 FOR
 U-HAUL, INC.

DATE	APRIL, 2020
SCALE	1" = 40'
DESIGNER	KS/SS
DRAWN BY	TB/JTG
JOB NO.	A19640
SHEET	C1.0
OF	8 SHEETS



LEGEND

PROPOSED	EXISTING	DESCRIPTION
		ASPHALT BERM
		BLOCK/RETAINING WALL
		BUILDING LINE
		FLURRY CONCRETE CURB
		CONCRETE CURB
		CONCRETE CURB CUT
		CONCRETE CURB & GUTTER
		CONTOUR LINE
		DRIVEWAY
		EDGE OF PAVEMENT
		FENCE LINE
		LOT LINE
		MONUMENT/MONUMENT LINE
		PERFORATED STORM DRAIN PIPE
		PROPERTY LINE
		RAINWATER LEADER
		SIDE WALK
		STORM DRAIN-MANHOLE & CATCH BASIN
		THRU CURB DRAIN
		SPOT ELEVATION
		TRAFFIC SIGN
		TREE
		UTILITY BOX
		AREA DRAIN
		BACK OF WALK
		BUILDING
		BUILDING LINE
		CATCH BASIN
		CLEARCUT TO GRADE
		CONCRETE
		DOOR
		DOWN SPOUT
		DUCTILE IRON PIPE
		EASEMENT
		EDGE OF WALK
		FACE OF BERM
		FACE OF CURB
		FACE OF WALL
		FINISHED FLOOR
		FLOW LINE
		GRADE BREAK
		HIGH POINT
		INVERT ELEVATION
		LOW POINT
		LIGHT
		OVERFLOW
		PAVEMENT
		RAINWATER LEADER
		RIDGE
		RIM ELEVATION
		ROOF DRAIN
		STORM DRAIN JUNCTION BOX
		STORM DRAIN MANHOLE
		SWALE
		TOP OF BERM
		TOP OF CURB
		TOP OF WALL
		TRANSFORMER
		TRASH ENCLOSURE
		BIO-FILTRATION SWALE



LANDS OF DEPARTMENT OF FISH & GAME
2002-132615 OR

LANDS OF OLIVER PROPERTIES, LLC
APPROXIMATE LOCATION PUBLIC EASEMENT & ADVERSE CLAIM

LANDS OF STATE OF CALIFORNIA
PARCEL MAP 1042

LANDS OF JON K TAKATA INVESTMENTS, LLC
PARCEL 6 TRACT NO. 4019

PRELIMINARY GRADING AND DRAINAGE PLAN
OF
4150 POINTE EDEN WAY
FOR
U-HAUL, INC.

DATE	APRIL, 2020
SCALE	1" = 40'
DESIGNER	KS/SS
DRAWN BY	TB/JTG
JOB NO.	A19640
SHEET	C2.0
OF	8 SHEETS

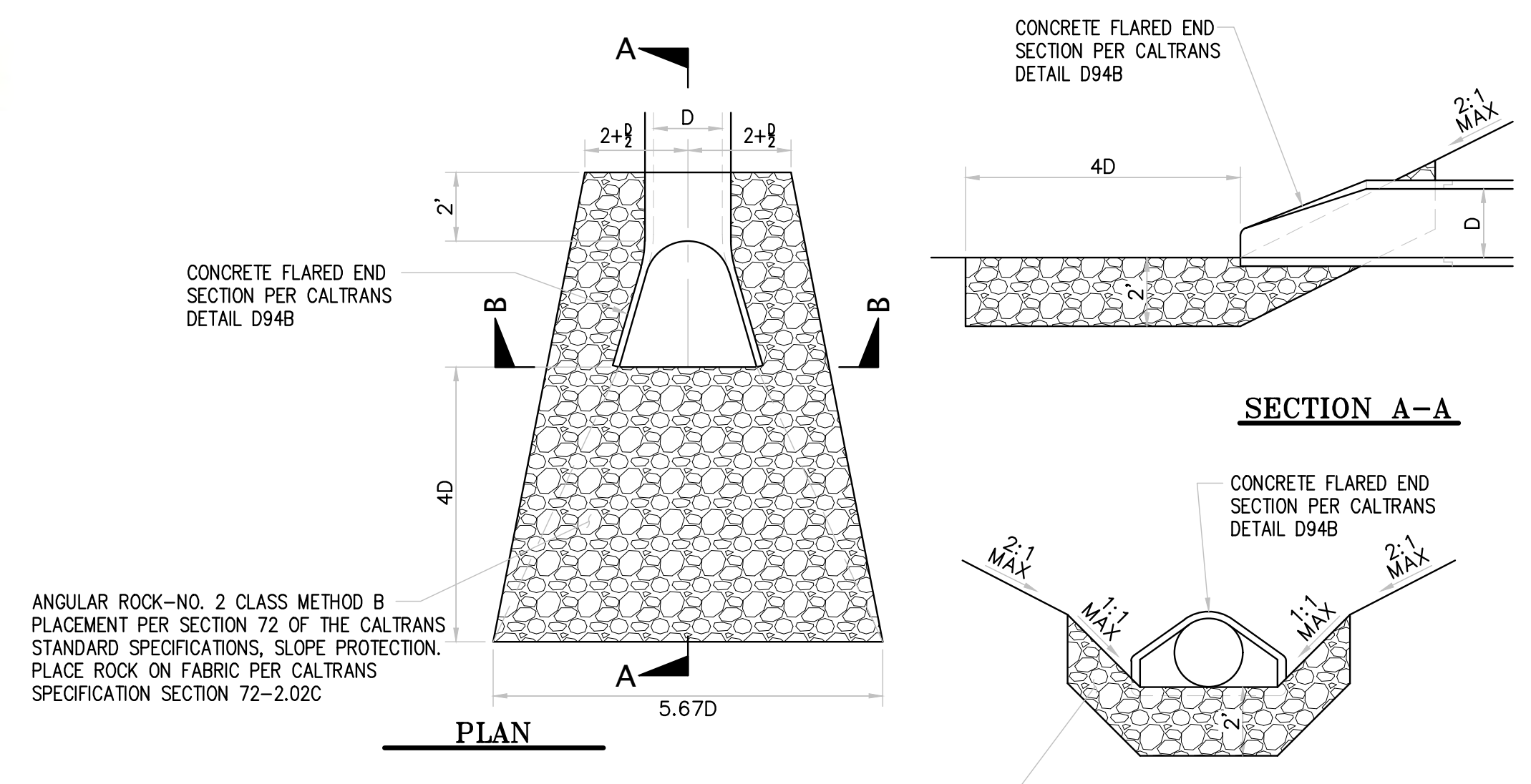
KIER+WRIGHT
2850 Collier Canyon Road
Livermore, CA 94551
Phone: (925) 745-9288
www.kierwright.com

NO.	BY	NO.	REVISION

Z:\2019\A19640\DWG\CIVIL\A19640-CDS-CF.dwg 4-14-20 11:33:41 AM jgullentags

Catchbasin Insert, Full Capture Device

KS-1 Flo Gard Plus catchbasin filter Inserts, combination inlet style, stainless steel only (C3)
Drop in Basket

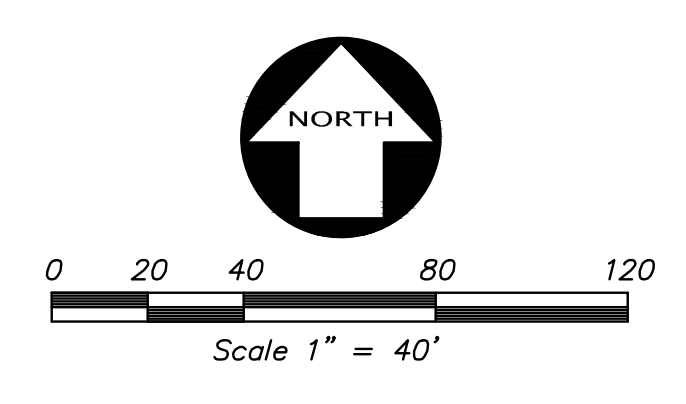
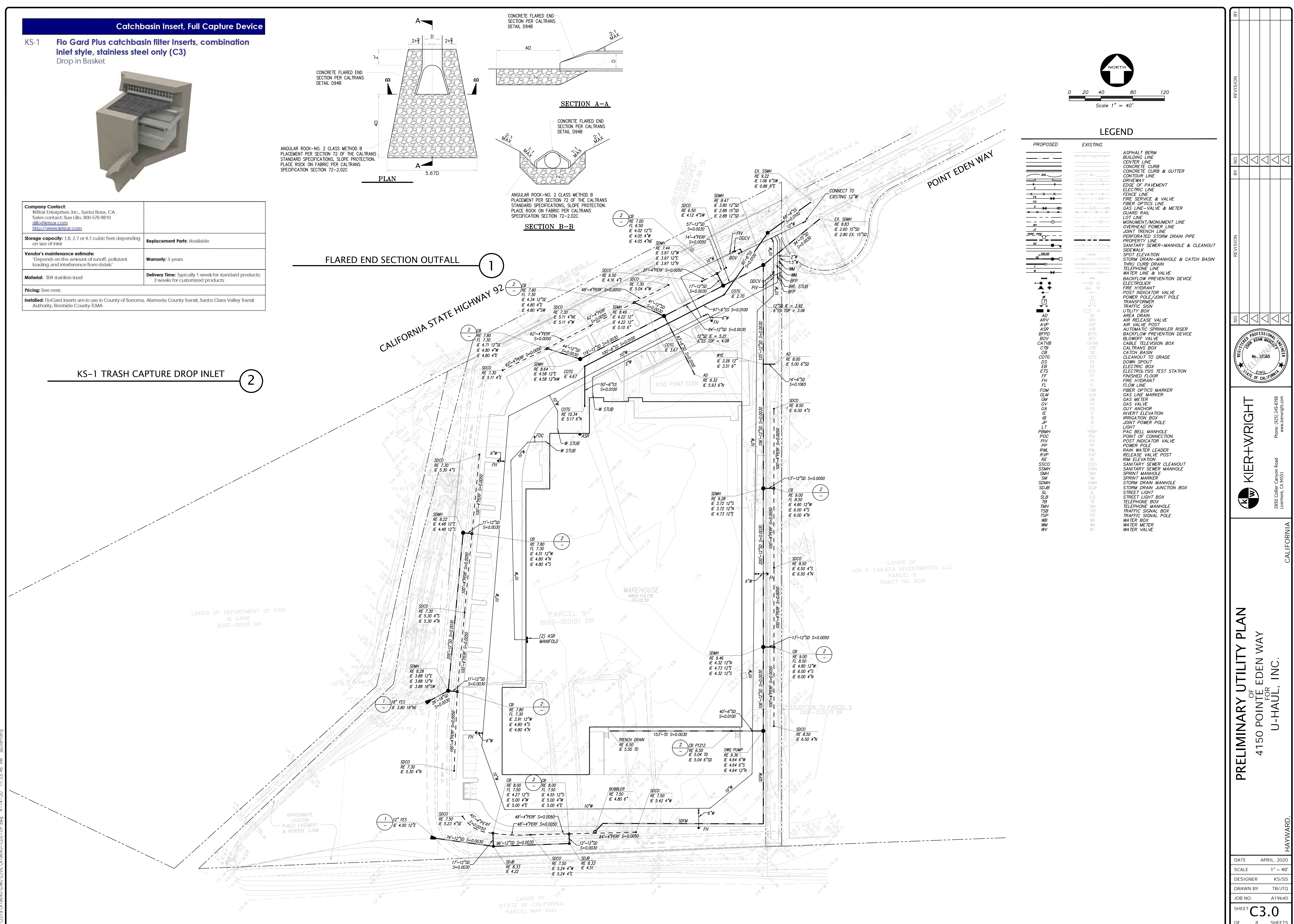


ANGULAR ROCK-NO. 2 CLASS METHOD B PLACEMENT PER SECTION 72 OF THE CALTRANS STANDARD SPECIFICATIONS, SLOPE PROTECTION. PLACE ROCK ON FABRIC PER CALTRANS SPECIFICATION SECTION 72-2.02C

FLARED END SECTION OUTFALL

Table with 2 columns: Specification/Requirement and Details. Includes Company Contact, Storage capacity, Vendor's maintenance estimate, Material, Pricing, and Installed information.

KS-1 TRASH CAPTURE DROP INLET



LEGEND

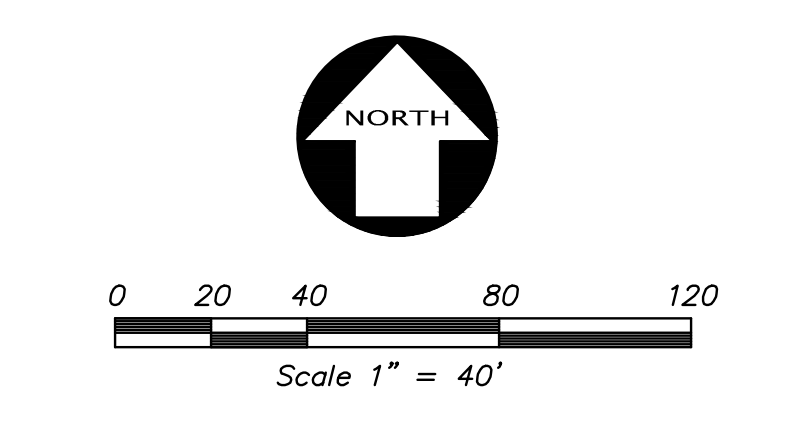
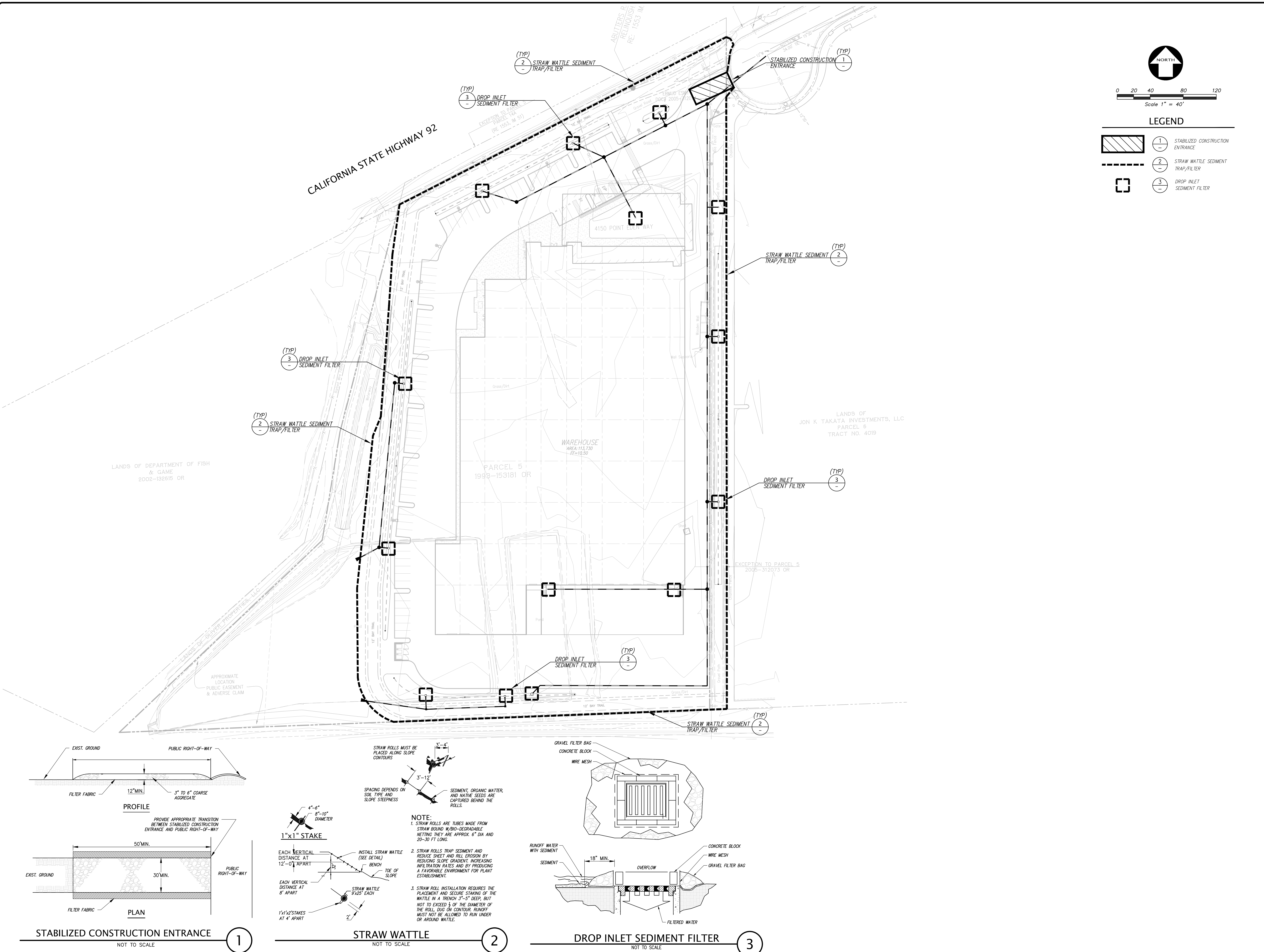
Legend table with columns for PROPOSED and EXISTING symbols, and a list of utility types such as ASPHALT BERM, CONCRETE CURB, and various pipe and manhole types.

Revision table with columns for NO., REVISION, and BY. Includes a professional seal for Kier+Wright.

PRELIMINARY UTILITY PLAN OF 4150 POINTE EDEN WAY FOR U-HAUL, INC.

Project information table including DATE (APRIL, 2020), SCALE (1" = 40'), DESIGNER (KS/SS), DRAWN BY (TB/JTG), JOB NO. (A19640), SHEET (C3.0), and SHEETS (8).

7/1/2019 9:41:56 AM D:\MS\119640\CIVIL\A19640-CDS-UTP.dwg 4-14-20 11:33:46 AM jallanting



LEGEND

	(1)	STABILIZED CONSTRUCTION ENTRANCE
	(2)	STRAW WATTLE SEDIMENT TRAP/FILTER
	(3)	DROP INLET SEDIMENT FILTER

BY	REVISION
NO.	DATE

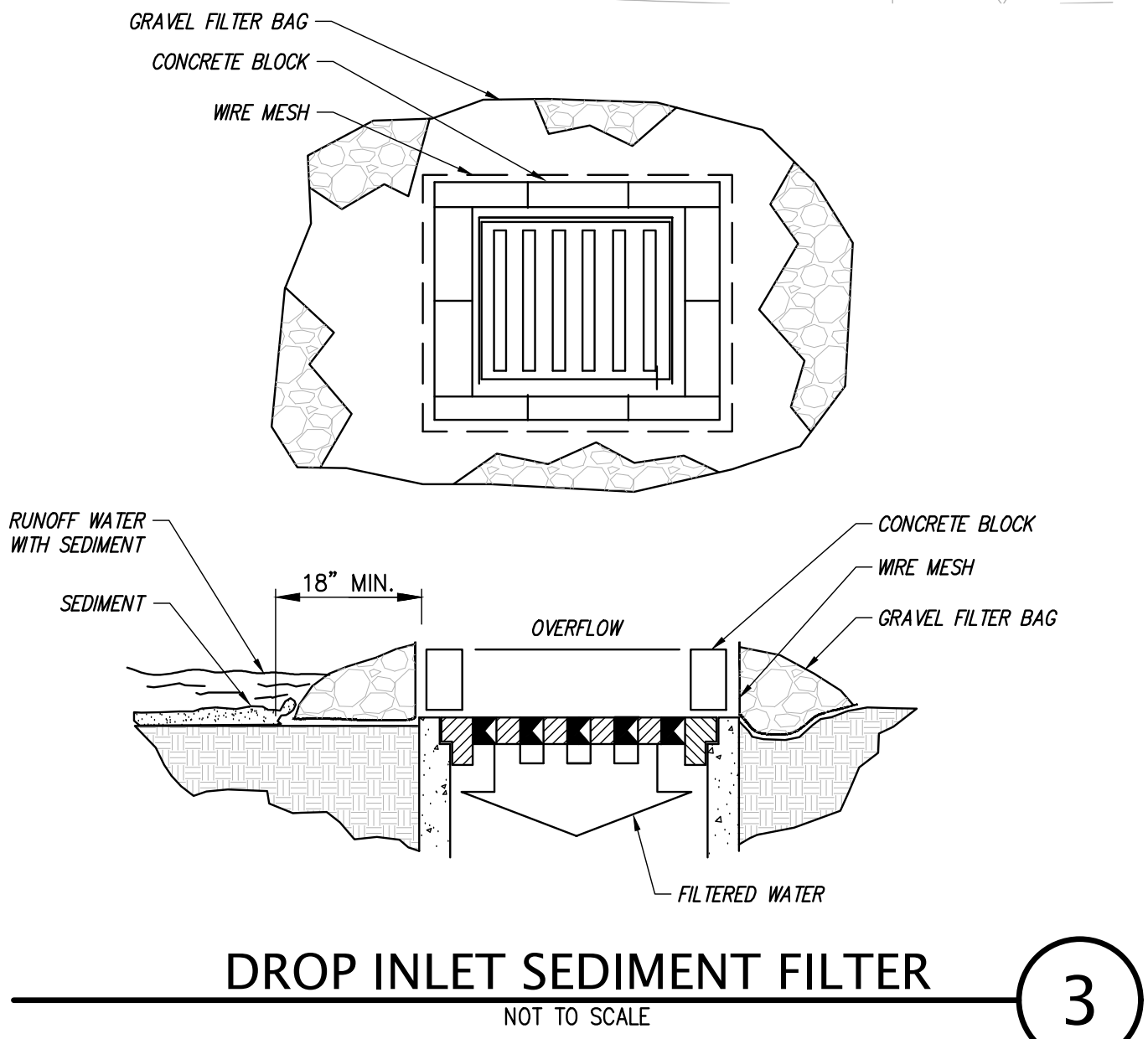
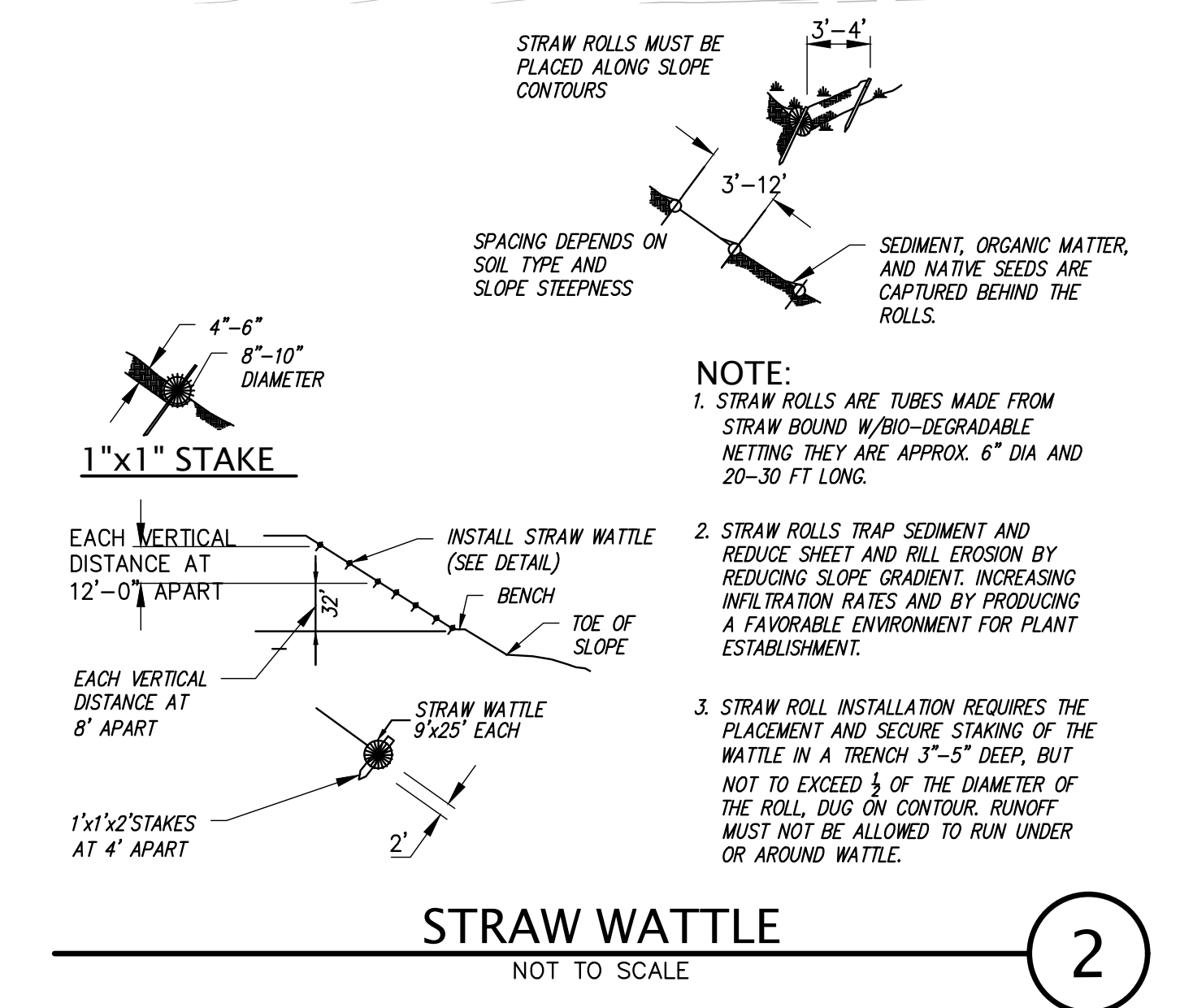
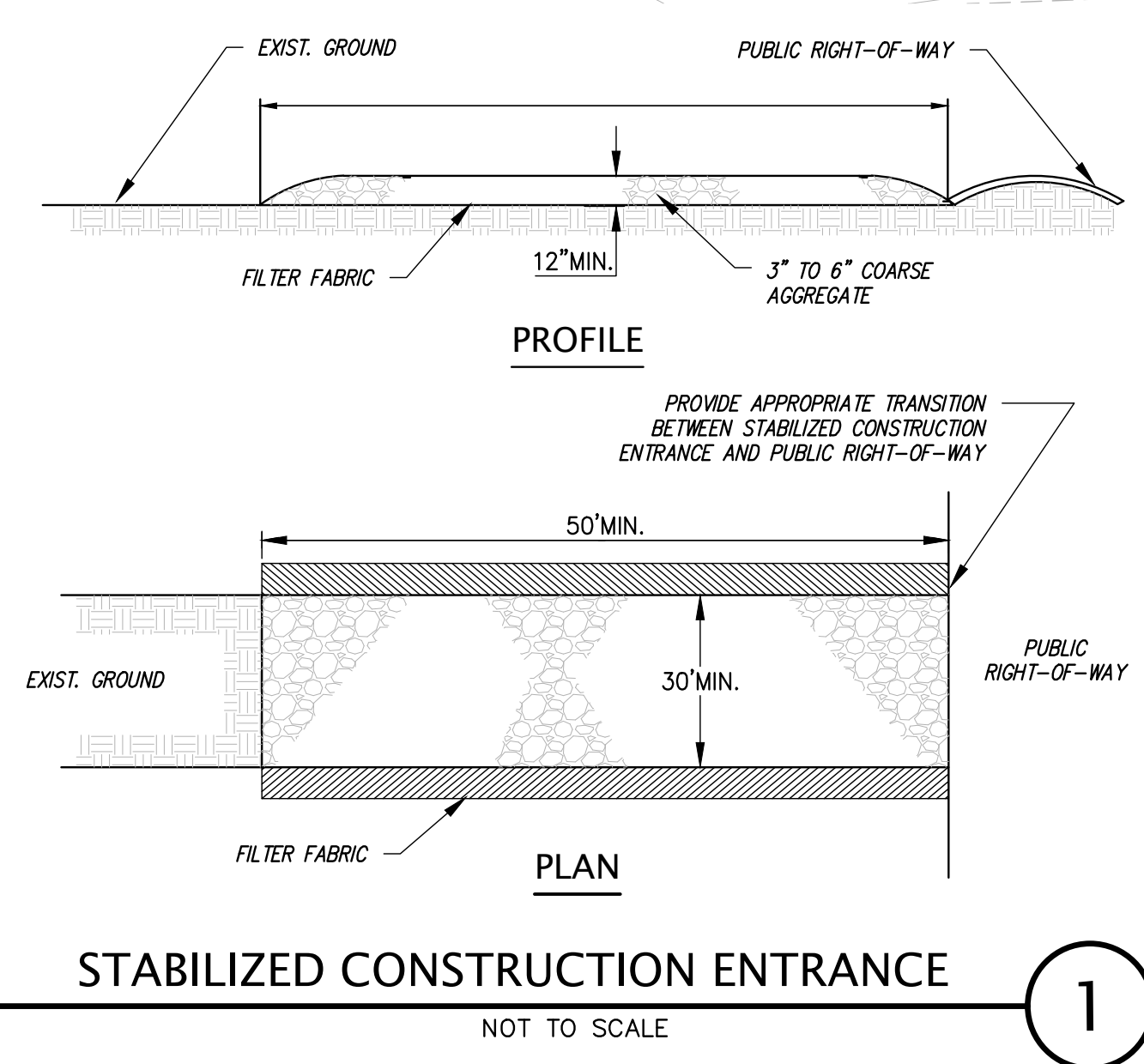
REGISTERED PROFESSIONAL ENGINEER
 JOHN ADAM HANFORD
 No. 23365
 CIVIL
 STATE OF CALIFORNIA

KIER+WRIGHT
 2850 Collier Canyon Road
 Livermore, CA 94551
 Phone: (925) 745-9788
 www.kierwright.com

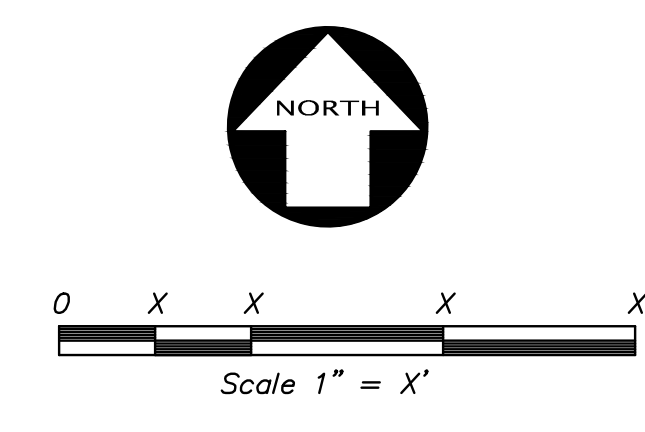
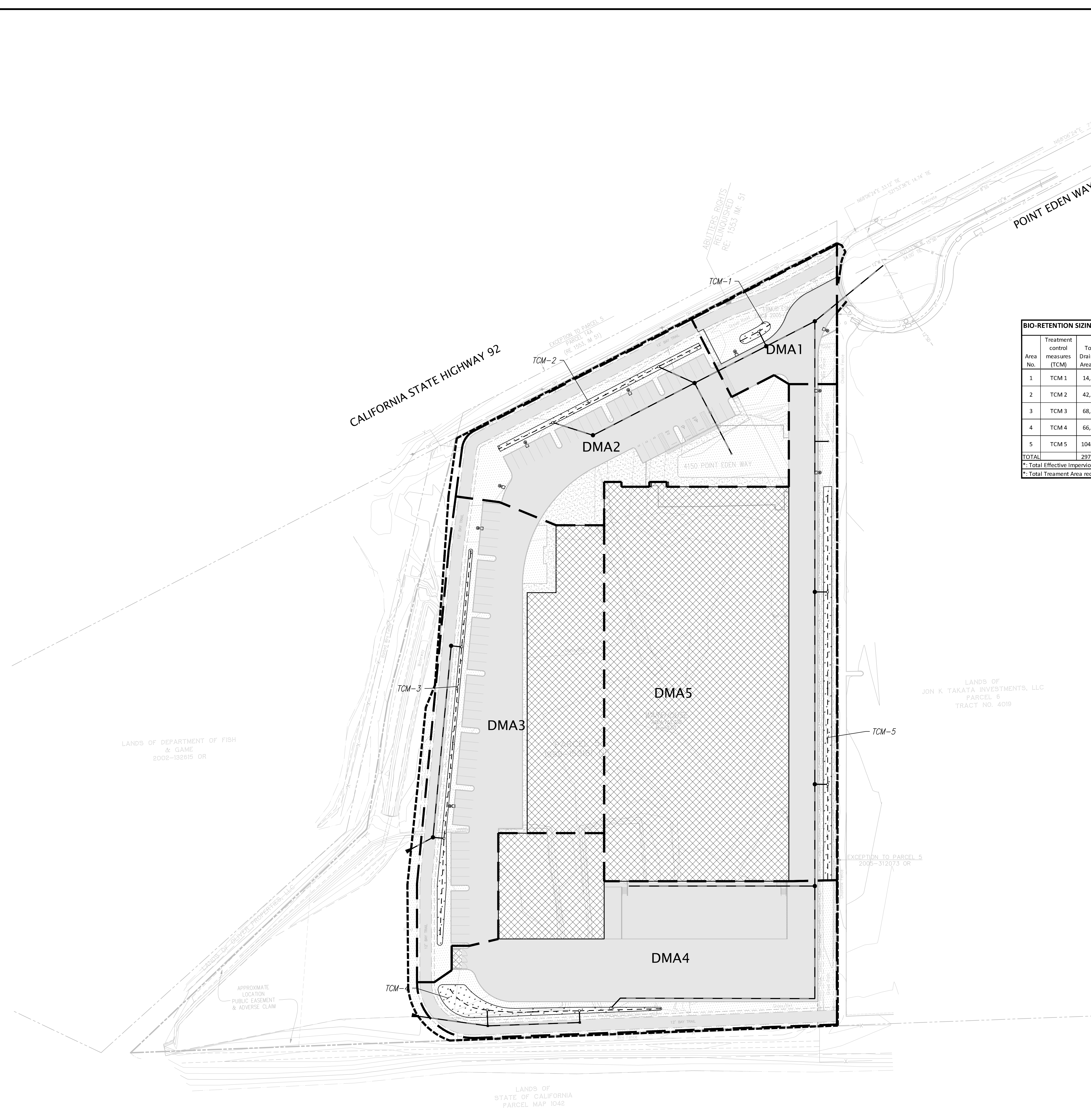
EROSION CONTROL PLAN
 OF
 4150 POINTE EDEN WAY
 FOR
 U-HAUL, INC.

CALIFORNIA
 HAYWARD.

DATE	APRIL, 2020
SCALE	1" = 40'
DESIGNER	KS/SS
DRAWN BY	TB/JTQ
JOB NO.	A19640
SHEET	C4.0
OF	8 SHEETS



Z:\2019\A19640\DWG\CIVIL\A19640-CDS-SUM.dwg 4-14-20 11:07:22 AM jullivan



LEGEND

- TRIBUTARY AREA LIMITS
- LANDSCAPE AREA
- IMPERVIOUS ROOFTOP DRAINING TO BIO-SWALE
- IMPERVIOUS PAVEMENT DRAINING TO BIO-SWALE
- BIO-RETENTION TREATMENT AREA
- CONCRETE AREA

BIO-RETENTION SIZING CALCULATIONS

Area No.	Treatment control measures (TCM)	Total Drainage Area (SF)	Pervious Area (SF)	Impervious Area (SF)	Effective Pervious Area (SF)	Effective Impervious Area (SF)	Treatment Area Required (SF)	Treatment Provided (SF)	Depth of Ponding (Inches)	Treatment Type	Sizing Method
1	TCM 1	14,966	4454	10,512	0	10,957	329	354	6	Bio-Retention Planter	Combination Flow and Volume Method
2	TCM 2	42,980	15007	27,973	0	29,474	884	863	6	Bio-Retention Planter	Combination Flow and Volume Method
3	TCM 3	68,664	10278	58,386	0	59,414	1782	1,819	6	Bio-Retention Planter	Combination Flow and Volume Method
4	TCM 4	66,447	9523	56,924	0	57,876	1736	2,195	6	Bio-Retention Planter	Combination Flow and Volume Method
5	TCM 5	104,705	6578	98,127	0	98,785	2964	3,480	6	Bio-Retention Planter	Combination Flow and Volume Method
TOTAL		297,762	45,840	251,922	0	256,506	7,695	8,711			

* Total Effective Impervious area is equal to Impervious Area + 0.10 * Pervious Area.
 * Total Treatment Area required is equal to Effective Impervious Area * 0.03

NO.	BY	NO.	REVISION

KIER+WRIGHT
 REGISTERED PROFESSIONAL ENGINEER
 No. 32365
 CIVIL
 STATE OF CALIFORNIA
 2850 Collier Canyon Road
 Livermore, CA 94551
 Phone: (925) 745-9788
 www.kierwright.com

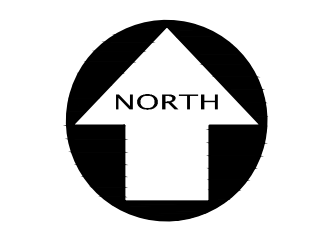
PRELIMINARY STORM WATER QUALITY CONTROL PLAN
 OF
 4150 POINTE EDEN WAY
 FOR
 U-HAUL, INC.
 HAYWARD, CALIFORNIA

DATE	APRIL, 2020
SCALE	1" = 40'
DESIGNER	KS/SS
DRAWN BY	TB/JTG
JOB NO.	A19640
SHEET	C5.0
OF	8 SHEETS

PROGRESS SET

Z:\2019\A19640\DWG\CIVIL\A19640-CDS-SIM.dwg 4-14-20 11:34:59 AM jullivanong

PROPOSED LAND SWAP EXHIBIT



0 20 40 80 120
Scale 1" = 40'

LEGEND

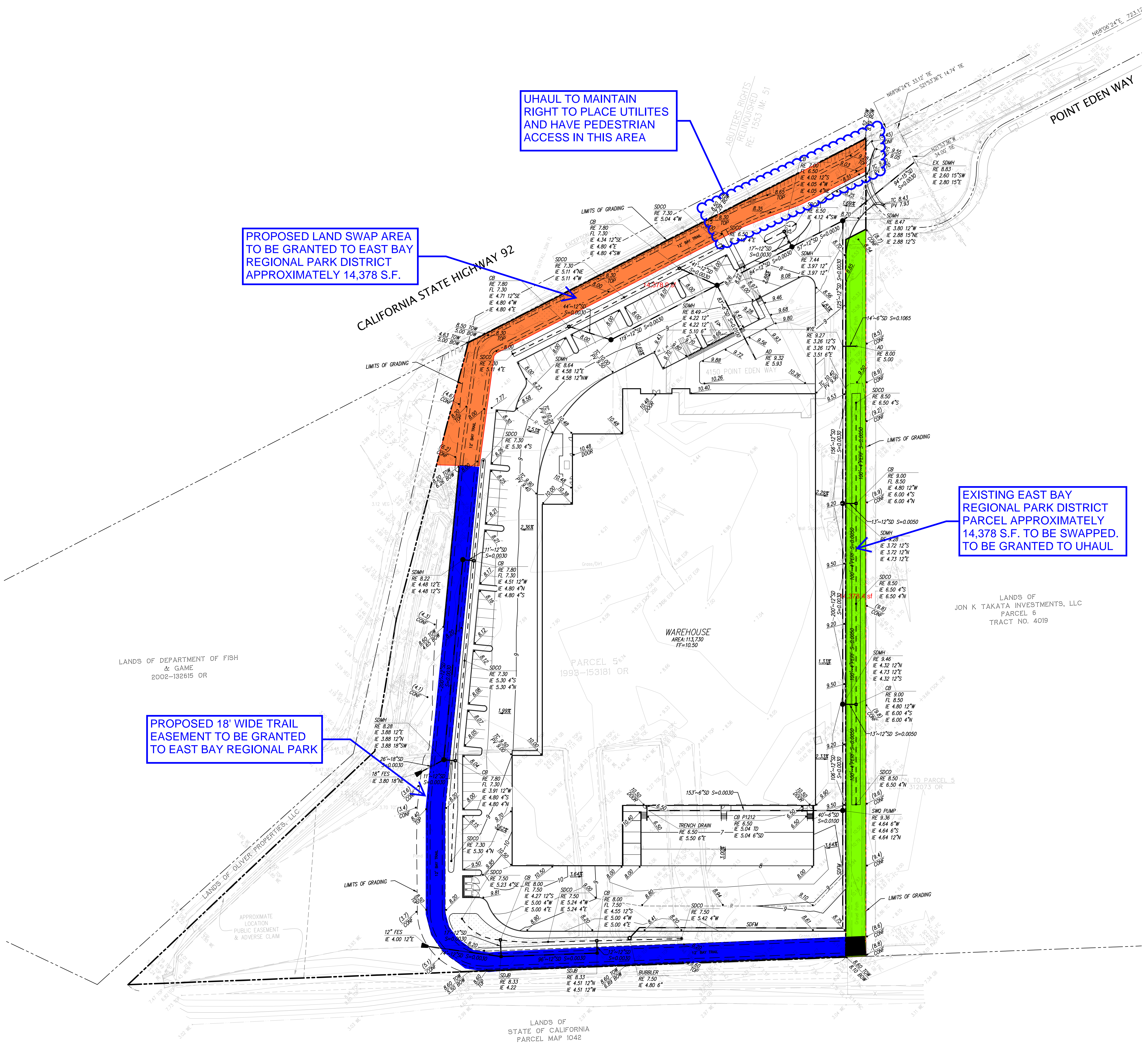
PROPOSED	EXISTING	DESCRIPTION
[Symbol]	[Symbol]	ASPHALT BERM
[Symbol]	[Symbol]	BLOCK/RETAINING WALL
[Symbol]	[Symbol]	BUILDING LINE
[Symbol]	[Symbol]	FLUSH CONCRETE CURB
[Symbol]	[Symbol]	CONCRETE CURB CUT
[Symbol]	[Symbol]	CONCRETE CURB & GUTTER
[Symbol]	[Symbol]	CONTOUR LINE
[Symbol]	[Symbol]	DRIVEWAY
[Symbol]	[Symbol]	EDGE OF PAVEMENT
[Symbol]	[Symbol]	FENCE LINE
[Symbol]	[Symbol]	LOT LINE
[Symbol]	[Symbol]	MONUMENT/MONUMENT LINE
[Symbol]	[Symbol]	PERFORATED STORM DRAIN PIPE
[Symbol]	[Symbol]	PROPERTY LINE
[Symbol]	[Symbol]	RAINWATER LEADER
[Symbol]	[Symbol]	SIDEWALK
[Symbol]	[Symbol]	STORM DRAIN-MANHOLE & CATCH BASIN
[Symbol]	[Symbol]	THRU CURB DRAIN
[Symbol]	[Symbol]	SPOT ELEVATION
[Symbol]	[Symbol]	TRAFFIC SIGN
[Symbol]	[Symbol]	TREE
[Symbol]	[Symbol]	UTILITY BOX
[Symbol]	[Symbol]	AREA DRAIN
[Symbol]	[Symbol]	BACK OF WALK
[Symbol]	[Symbol]	BUILDING
[Symbol]	[Symbol]	BUILDING LINE
[Symbol]	[Symbol]	CATCH BASIN
[Symbol]	[Symbol]	CLEARMENT TO GRADE
[Symbol]	[Symbol]	CONCRETE
[Symbol]	[Symbol]	DOOR
[Symbol]	[Symbol]	DOWN SPOUT
[Symbol]	[Symbol]	DUCTILE IRON PIPE
[Symbol]	[Symbol]	EASEMENT
[Symbol]	[Symbol]	EDGE OF WALK
[Symbol]	[Symbol]	FACE OF BERM
[Symbol]	[Symbol]	FACE OF CURB
[Symbol]	[Symbol]	FACE OF WALL
[Symbol]	[Symbol]	FINISHED FLOOR
[Symbol]	[Symbol]	FLOW LINE
[Symbol]	[Symbol]	GRADE BREAK
[Symbol]	[Symbol]	HIGH POINT
[Symbol]	[Symbol]	INVERT ELEVATION
[Symbol]	[Symbol]	LOW POINT
[Symbol]	[Symbol]	LIGHT
[Symbol]	[Symbol]	OVERFLOW
[Symbol]	[Symbol]	PAVEMENT
[Symbol]	[Symbol]	RAINWATER LEADER
[Symbol]	[Symbol]	RIDGE
[Symbol]	[Symbol]	RIM ELEVATION
[Symbol]	[Symbol]	ROOF DRAIN
[Symbol]	[Symbol]	STORM DRAIN JUNCTION BOX
[Symbol]	[Symbol]	STORM DRAIN MANHOLE
[Symbol]	[Symbol]	SWALE
[Symbol]	[Symbol]	TOP OF BERM
[Symbol]	[Symbol]	TOP OF CURB
[Symbol]	[Symbol]	TOP OF WALL
[Symbol]	[Symbol]	TRANSFORMER
[Symbol]	[Symbol]	TRASH ENCLOSURE
[Symbol]	[Symbol]	BIO-FILTRATION SWALE

UHAUL TO MAINTAIN RIGHT TO PLACE UTILITES AND HAVE PEDESTRIAN ACCESS IN THIS AREA

PROPOSED LAND SWAP AREA TO BE GRANTED TO EAST BAY REGIONAL PARK DISTRICT APPROXIMATELY 14,378 S.F.

EXISTING EAST BAY REGIONAL PARK DISTRICT PARCEL APPROXIMATELY 14,378 S.F. TO BE SWAPPED. TO BE GRANTED TO UHAUL

PROPOSED 18' WIDE TRAIL EASEMENT TO BE GRANTED TO EAST BAY REGIONAL PARK



BY		REVISION	
BY	NO.	REVISION	DATE
BY	NO.	REVISION	DATE
BY	NO.	REVISION	DATE

KIER+WRIGHT

2850 Collier Canyon Road
Livermore, CA 94551
Phone: (925) 745-9788
www.kierwright.com

PRELIMINARY GRADING AND DRAINAGE PLAN
OF
4150 POINTE EDEN WAY
FOR
U-HAUL, INC.

HAYWARD, CALIFORNIA

DATE	APRIL, 2020
SCALE	1" = 40'
DESIGNER	KS/SS
DRAWN BY	TB/JTG
JOB NO.	A19640
SHEET	C2.0
OF	8 SHEETS

Z:\2019\A19640\DWG\CIVIL\A19640-CDS-CP.dwg 4/14/20 11:33:41 AM jgullentags