

OPTION 1: Location - W. Winton, Hayward, CA

AREA 1

The following is a proposed restoration concept that works well near gas pipelines and can add to the safety and beauty of the area. Please note the proposed restoration represents the vegetation at full maturity.

Tree Removal Plan



● Unacceptable risk trees to be removed.

Conceptual Restoration Plan



★ Tuscarora Crape Myrtle (*Lagerstroemia X 'Tuscarora'*)

Proposed Tree



Tuscarora Crape Myrtle
 (*Lagerstroemia X 'Tuscarora'*)
 Size: 36" box, standard tree form

PG&E Critical Infrastructure Information. Facilities to be operated by PG&E personnel only. Pipeline and work area locations are approximate and for illustrative purposes only. Data subject to updates. Call 811 before you dig. PG&E shall not provide irrigation work at this location.

OPTION 2: Location - W. Winton, Hayward, CA

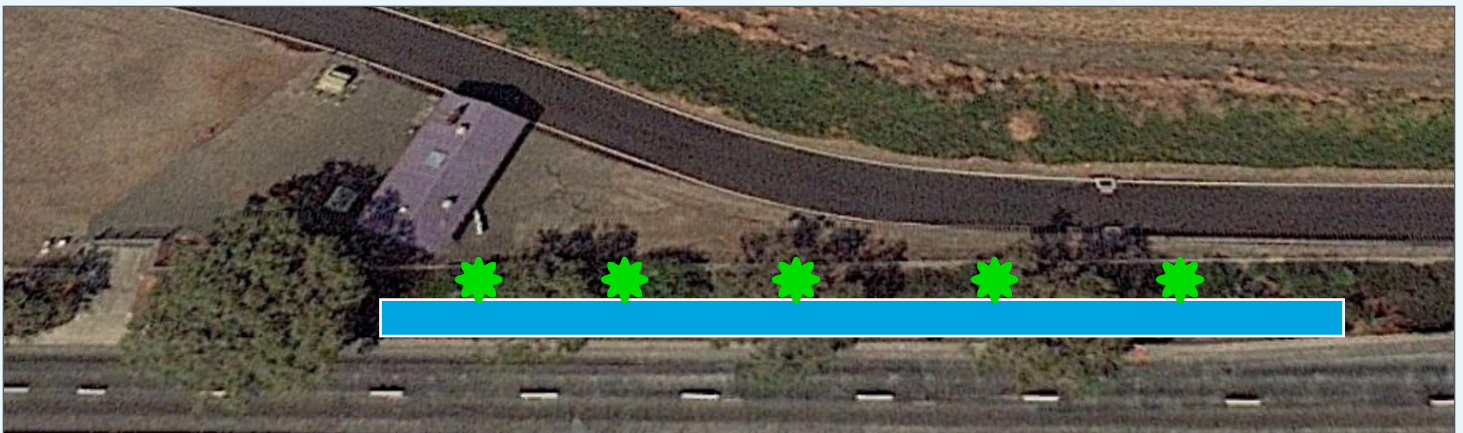
The following is a proposed restoration concept that works well near gas pipelines and can add to the safety and beauty of the area. Please note the proposed restoration represents the vegetation at full maturity.

Tree Removal Plan



● Unacceptable risk trees to be removed.

Conceptual Restoration Plan



★ Tuscarora Crape Myrtle (*Lagerstroemia X 'Tuscarora'*) ■ Proposed Restoration Area (see Proposed Vegetation below)

Proposed Vegetation



Tuscarora Crape Myrtle
(*Lagerstroemia X 'Tuscarora'*)

Size: 36" box,
standard tree form



Chaparral Bush Mallow
(*Malacothamnus fasciculatus*
'Casitas')



Deer Grass
(*Muhlenbergia rigens*)

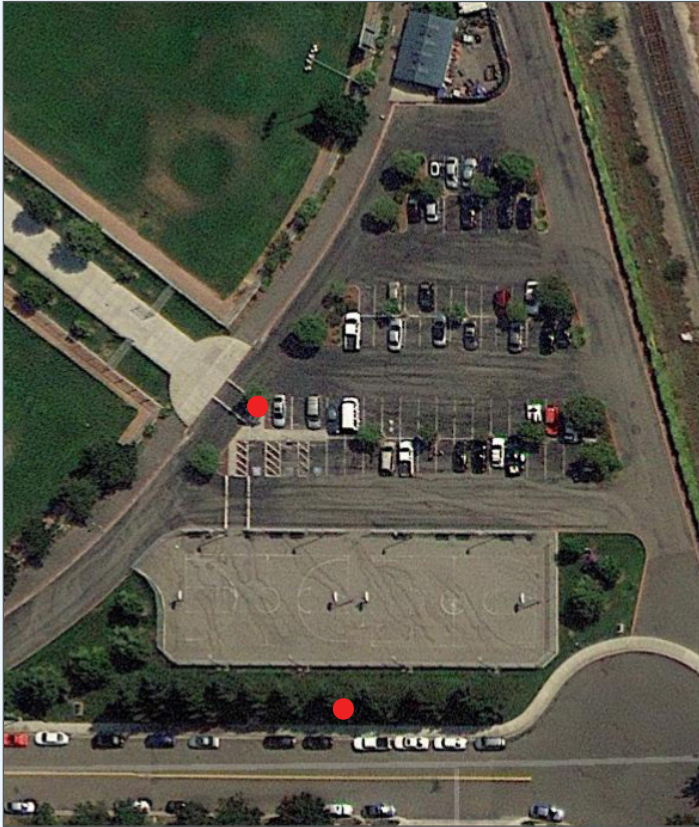


Island Snapdragon
(*Galvezia speciosa*)

PG&E Critical Infrastructure Information. Facilities to be operated by PG&E personnel only. Pipeline and work area locations are approximate and for illustrative purposes only. Data subject to updates. Call 811 before you dig. PG&E shall not provide irrigation work at this location.

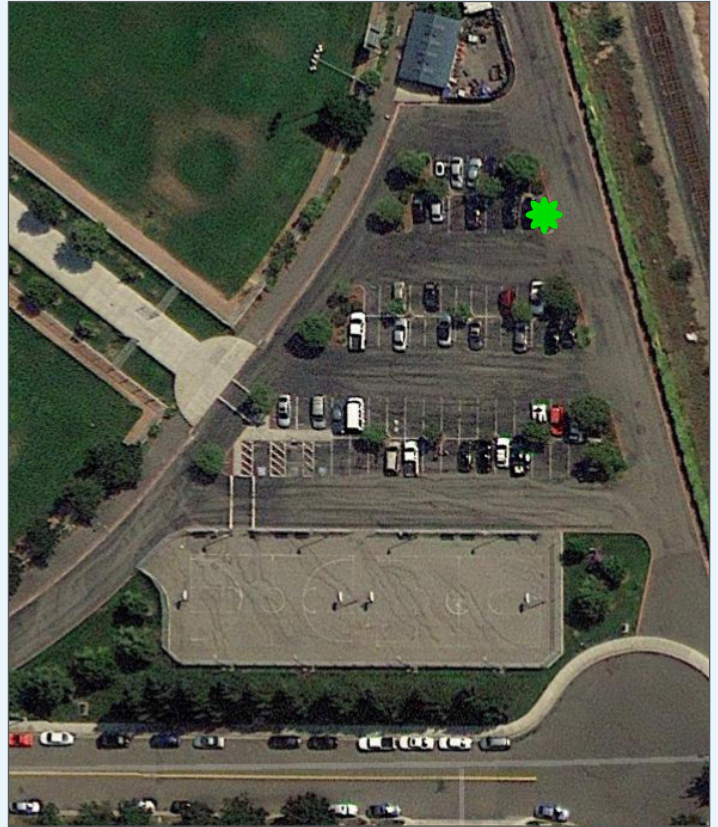
The following is a proposed restoration concept that works well near gas pipelines and can add to the safety and beauty of the area. Please note the proposed restoration represents the vegetation at full maturity.

Tree Removal Plan



● Unacceptable risk trees to be removed.

Conceptual Restoration Plan



★ **Water Gum** (*Tristania laurina*)

Proposed Tree

Water Gum
(*Tristania laurina*)
Size: 36" box, standard tree form



PG&E Critical Infrastructure Information. Facilities to be operated by PG&E personnel only. Pipeline and work area locations are approximate and for illustrative purposes only. Data subject to updates. Call 811 before you dig.

The following is a proposed restoration concept that works well near gas pipelines and can add to the safety and beauty of the area. Please note the proposed restoration represents the vegetation at full maturity.

Tree Removal Plan



- Unacceptable risk trees to be removed.
- Manageable risk Eucalyptus trees that the City of Hayward has opted to remove for the benefit of under-story planting.
- Approximate location of existing power lines.
- - - Approximate area of gas pipeline easement.

Conceptual Restoration Plan



- ★ **Deodar Cedar** (*Cedrus deodara*)
- ★ **California Buckeye** (*Aesculus californica*)
- **Bee's Bliss Sage, Deer Grass, Molate Red Fescue and Roman Beauty Rosemary** (see *Proposed Vegetation images below*)
- ⓐ Trees requested by the City; not recommended by PG&E*

*It is not recommended to plant trees of this quantity and size in the confines of this space. Due to their mature size, these trees must be planted at least 15' from the edge of the PG&E transmission pipeline. These trees should not be planted in a location that will cause future conflict with overhead electric lines. This leaves a small space to plant three large trees that require space to thrive; therefore, these 2 trees are not recommended by PG&E. Precise placement of the trees will be at the discretion of the on-site arborist and PG&E representatives at the time of installation.

Proposed Vegetation

Deodar Cedar
(*Cedrus deodara*)

Size: 24" box,
standard tree form



California Buckeye
(*Aesculus californica*)

Size: 24" box,
standard tree form



Bee's Bliss Sage
(*Salvia* 'Bee's Bliss')



Deer Grass
(*Muhlenbergia rigens*)



Molate Red Fescue
(*Festuca rubra* 'Molate')

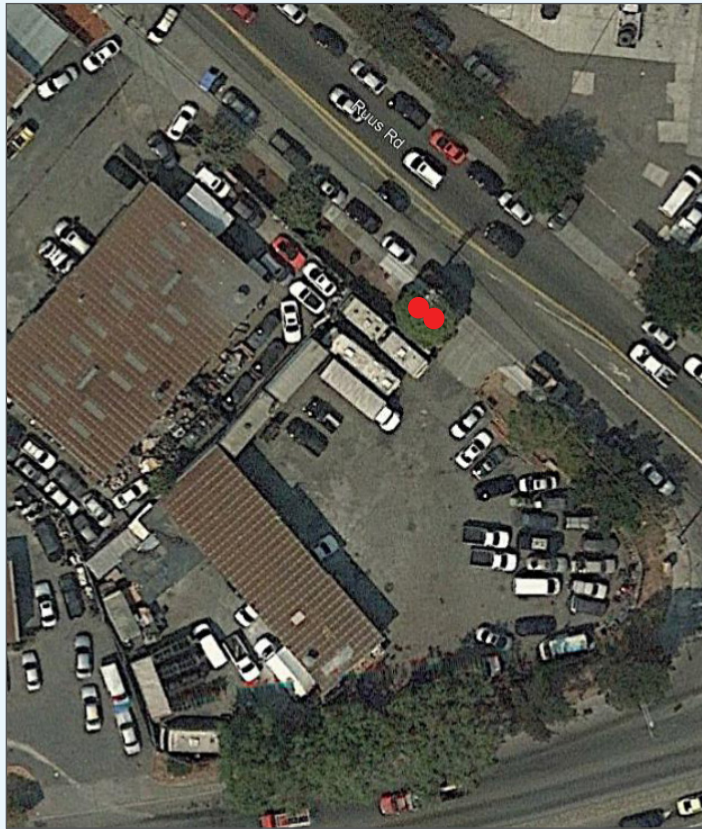


Roman Beauty Rosemary
(*Rosmarinus officinalis* 'Roman Beauty')

PG&E Critical Infrastructure Information. Facilities to be operated by PG&E personnel only. Pipeline and work area locations are approximate and for illustrative purposes only. Data subject to updates. Call 811 before you dig.

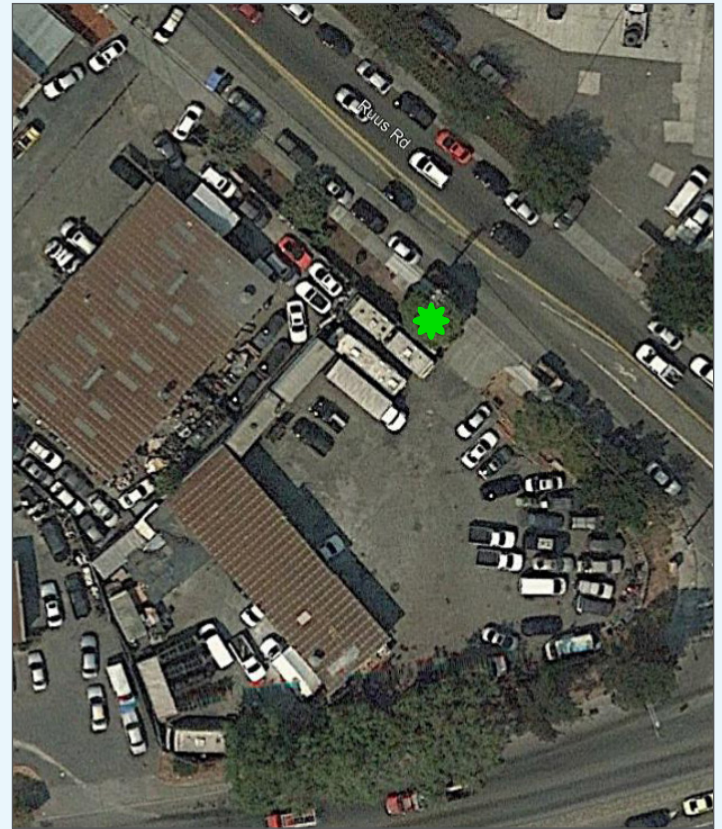
The following is a proposed restoration concept that works well near gas pipelines and can add to the safety and beauty of the area. Please note the proposed restoration represents the vegetation at full maturity.

Tree Removal Plan



● Unacceptable risk trees to be removed.

Conceptual Restoration Plan



★ Tuscarora Cape Myrtle
(*Lagerstroemia indica x fauriei* 'Tuscarora')

Proposed Tree

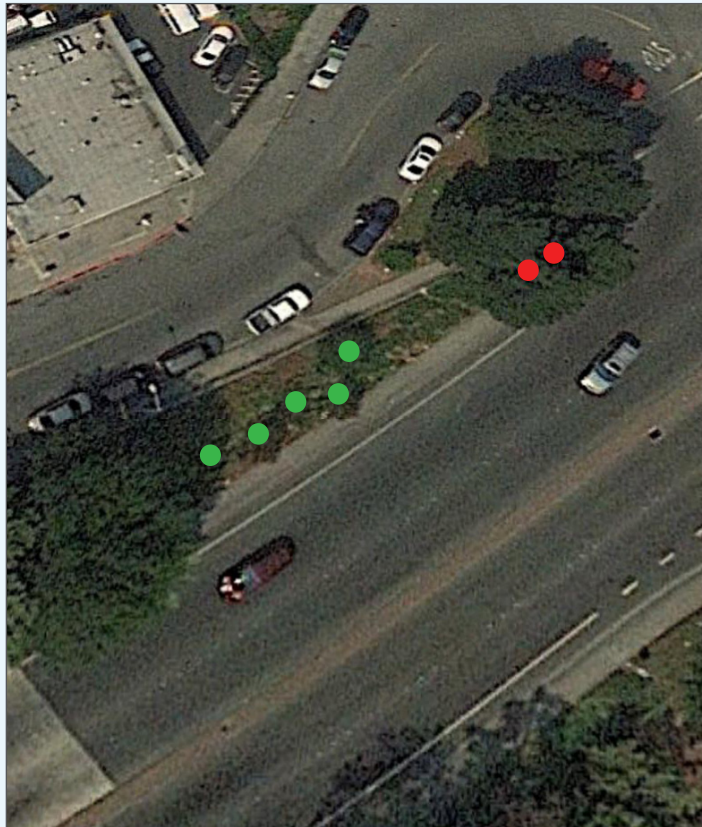
Tuscarora Cape Myrtle
(*Lagerstroemia indica x fauriei* 'Tuscarora')
Size: 15 gallon, standard tree form



PG&E Critical Infrastructure Information. Facilities to be operated by PG&E personnel only. Pipeline and work area locations are approximate and for illustrative purposes only. Data subject to updates. Call 811 before you dig.

The following is a proposed restoration concept that works well near gas pipelines and can add to the safety and beauty of the area. Please note the proposed restoration represents the vegetation at full maturity.

Tree Removal Plan



- Unacceptable risk trees to be removed.
- Manageable risk trees to be removed per the City's request

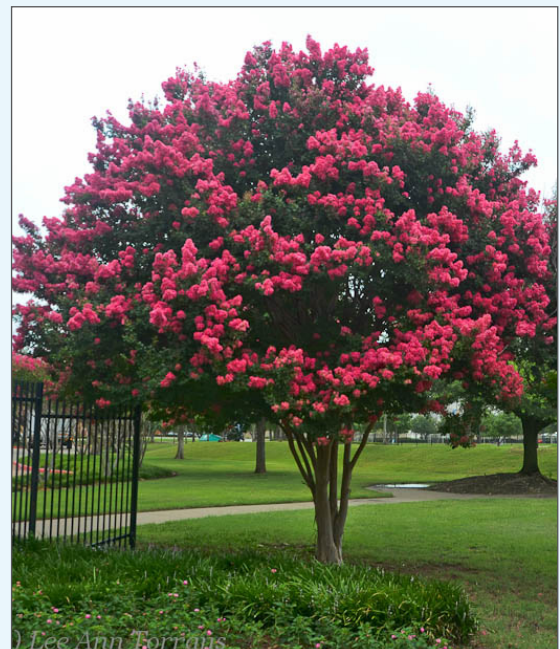
Conceptual Restoration Plan



★ Tuscarora Cape Myrtle
(*Lagerstroemia x 'Tuscarora'*)









Proposed Tree

Tuscarora Cape Myrtle
(*Lagerstroemia x 'Tuscarora'*)
Size: 15 gallon, standard tree form



PG&E Critical Infrastructure Information. Facilities to be operated by PG&E personnel only. Pipeline and work area locations are approximate and for illustrative purposes only. Data subject to updates. Call 811 before you dig. Irrigation work will only be performed by PG&E at this location if the existing system is fully functioning.

Species Key

 Live Oak	 CA Sycamore
 Deodar Cedar	 Atlas Cedar
 Honey Locust	 Italian Cypress
 Red Maple	 Leyland Cypress



SKYWEST GOLF COURSE RESTORATION
May 8th, 2017