

SHEET INDEX MAP

SCALE: 1" = 150'

- SHEET COVERAGE
- ⑤ SHEET NUMBER

- PARCELS A & N - SHEET 6
- PARCEL C - SHEET 16
- PARCELS D & E - SHEET 17
- PARCELS F, G, & H - SHEET 11
- PARCELS I & J - SHEET 14
- PARCEL K - SHEET 15
- PARCEL L - SHEET 13
- PARCEL M - SHEET 12
- PARCEL B - SHEET 18
- EXISTING EASEMENTS - SHEETS 19-23



NOTE:

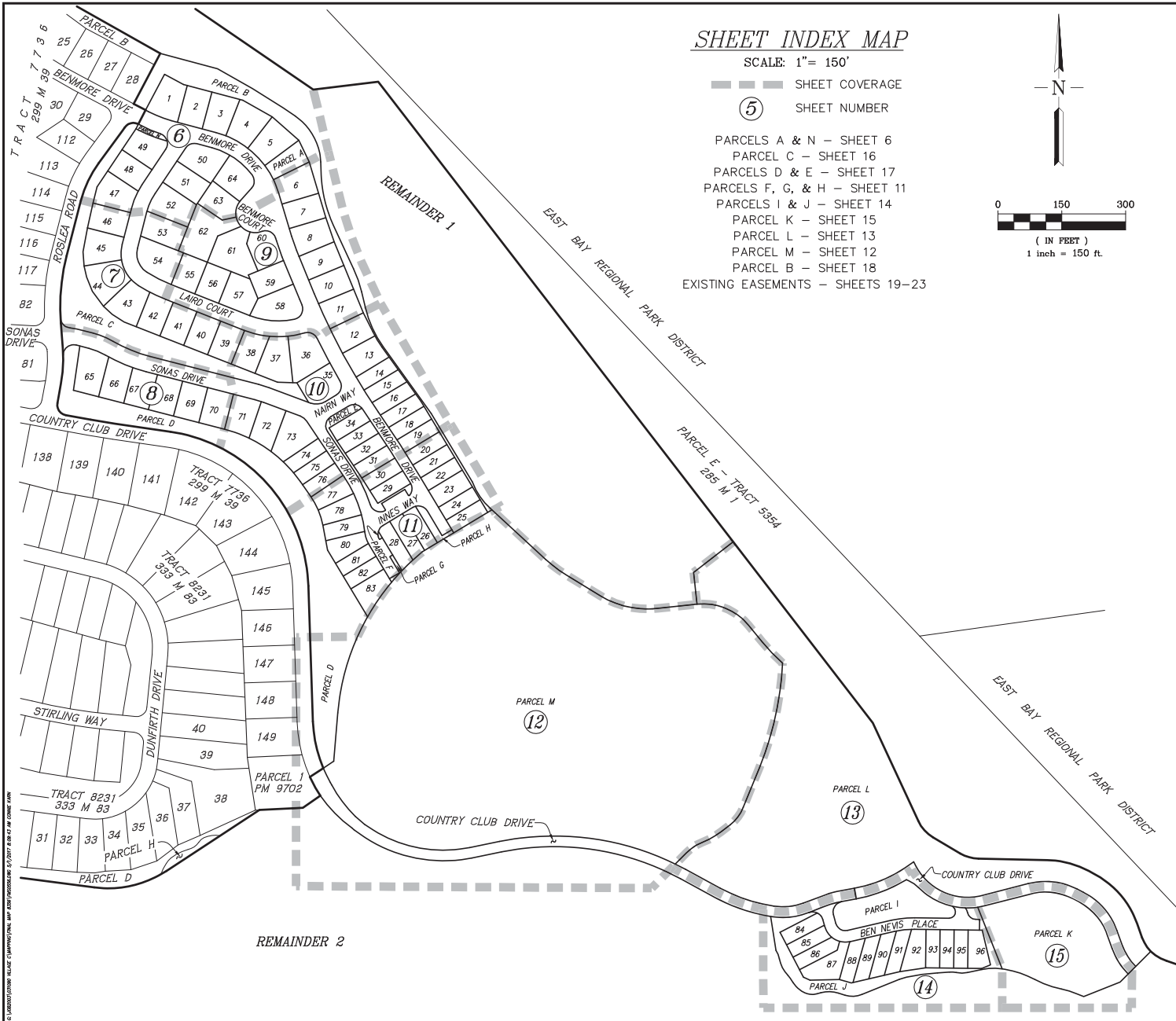
ALL MONUMENT TIE LINES ARE AT RIGHT ANGLES TO THE MONUMENT LINE UNLESS OTHERWISE NOTED.

BASIS OF BEARINGS

THE BEARING OF THE MONUMENT LINE ON COUNTRY CLUB DRIVE, SHOWN AS N12°40'37"W BETWEEN THE FOUND MONUMENTS WITH A DISTANCE OF 118.96', AS SHOWN ON THE MAP OF TRACT 7736, FILED MAY 24, 2007 IN BOOK 299 OF MAPS AT PAGE 39, OFFICIAL RECORDS OF ALAMEDA COUNTY.

LEGEND

- EXTERIOR BOUNDARY
- LOT LINE
- - - EXISTING EASEMENT LINE
- - - NEW EASEMENT LINE
- MONUMENT LINE
- MONUMENT TIE LINE
- - - EXISTING PROPERTY LINE
- - - SECTION LINE
- FOUND STANDARD CITY OF HAYWARD MONUMENT STAMPED RCE 25281, PER REFERENCE AS NOTED
- FOUND 3/4" IRON PIPE WITH PLASTIC PLUG STAMPED RCE 25281, UNLESS OTHERWISE NOTED PER REFERENCE AS NOTED
- ⊙ SET STANDARD CITY OF HAYWARD MONUMENT STAMPED LS 6630
- SET 3/4" IRON PIPE WITH PLASTIC PLUG STAMPED LS 6630
- (M-W) MONUMENT TO MONUMENT
- EVAE EMERGENCY VEHICLE ACCESS EASEMENT
- FMZE 200' WIDE (NOMINAL) FUEL MANAGEMENT ZONE EASEMENT, UNLESS OTHERWISE NOTED
- LE LANDSCAPE EASEMENT
- PPPE PRIVATE PEDESTRIAN PATH EASEMENT
- PG&E PACIFIC GAS AND ELECTRIC EASEMENT
- PTE PUBLIC TRAIL EASEMENT
- PAE PUBLIC ACCESS EASEMENT
- ATE AMERICAN TOWERS EASEMENT
- PSE PUBLIC SERVICE EASEMENT
- (R) RADIAL BEARING
- (T) TOTAL DISTANCE
- (DATA X(1)) RECORD DATA & REFERENCE
- EX EXISTING
- FD FOUND
- SQ.FT. SQUARE FEET
- R/S RECORD OF SURVEY
- M MAPS
- SCE SCENIC CONSERVATION EASEMENT
- EBRPDE EAST BAY REGIONAL PARK DISTRICT EASEMENT



TRACT 8356

BEING A 96 LOT SUBDIVISION OF PARCEL F AS SHOWN ON THE MAP OF TRACT 7736, FILED MAY 24, 2007 IN BOOK 299 OF MAPS AT PAGES 39-67 AND PARCEL 1, PARCEL 2, THE REMAINDER PARCEL, AND COUNTRY CLUB DRIVE, AS SHOWN ON PARCEL MAP 10116, FILED APRIL 8, 2014 IN BOOK 324 OF MAPS AT PAGES 80-89, ALL OF ALAMEDA COUNTY RECORDS

CITY OF HAYWARD
 ALAMEDA COUNTY, CALIFORNIA
 RUGGERI-JENSEN-AZAR
 CIVIL ENGINEERS, PLANNERS, SURVEYORS
 PLEASANTON, CALIFORNIA
 (925) 227-9100
 MAY 2017