

**CITY COUNCIL MEETING
TUESDAY, SEPTEMBER 27, 2016**

PRESENTATIONS

Item #5 WS 16-056



Eden Shores Buildout –

Timing of Residential and Non-Residential
Development

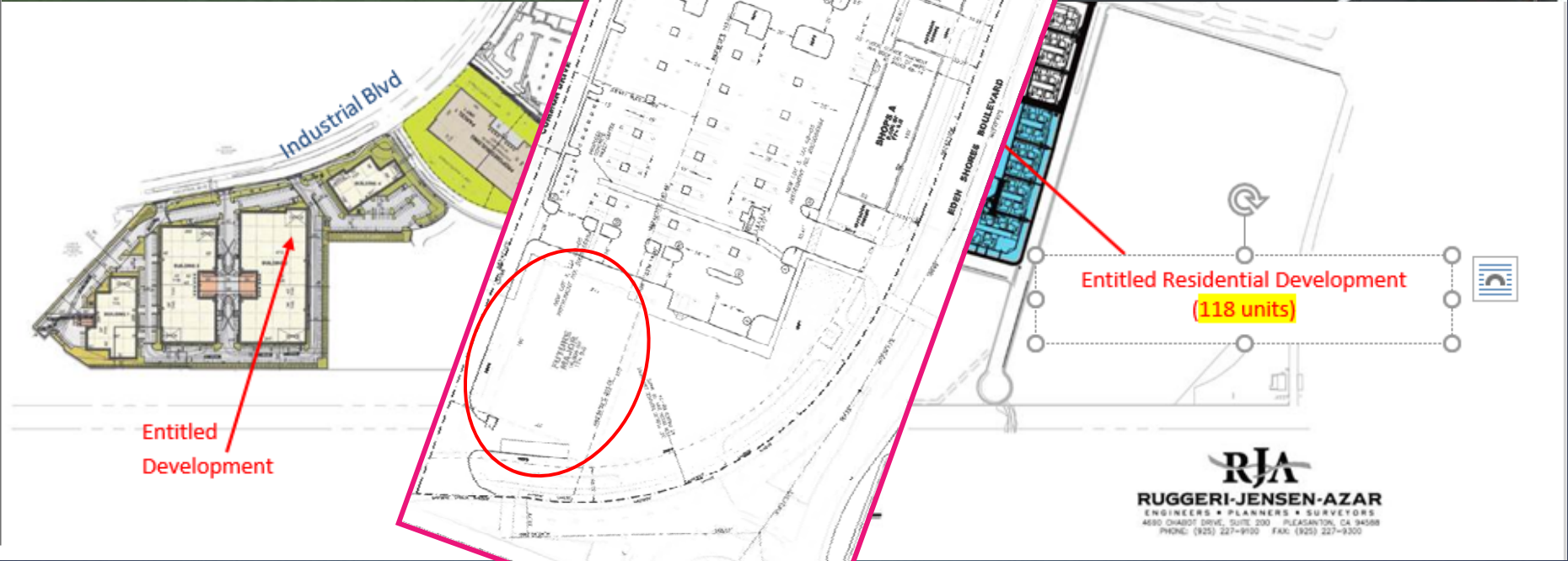


Eden
Shores I
(late 1990s)

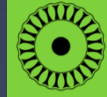
Eden
Shores
East
(2005)

Legacy
(2007 &
2010)

Oliver
Sports
Park

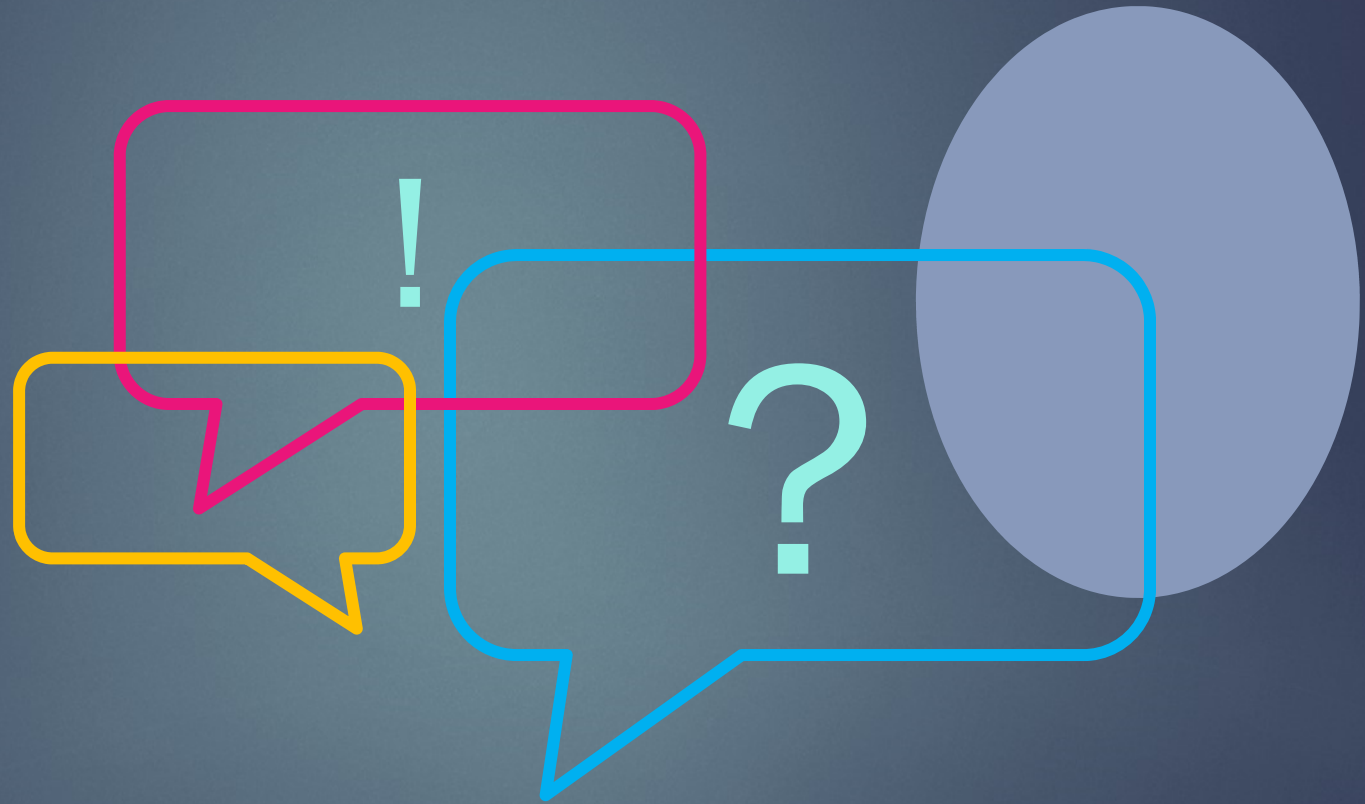


Summary



- ▶ All provisions of the current Development Agreement would be followed, except:
- ▶ Possibly allow permit issuance for **two homes** prior to retail center major anchor building being built

Questions & Discussion



Item #7 PH 16-091



DEVELOPMENT SERVICES

Dryden Court Single Family Home

Project Site



Current Site



Proposed Project



▶ Site Plan Review

- ▶ Approximately 4,400 single family home and related site improvements.

▶ Grading Permit Review

- ▶ Required per Parcel Map 5842; and
- ▶ HMC Section 10-8.23(b) Requires Council Review for grading permit on slopes exceeding 20%.

CEQA



- ▶ **Initial Study** released for 20-day circulation ended September 15, 2016 at 5 p.m.
- ▶ **Impacts** found in the areas of Geology/Soils.
- ▶ **Mitigation Measure** to minimize those impacts to a level of less than significant were incorporated as conditions of approval.

Recommendation

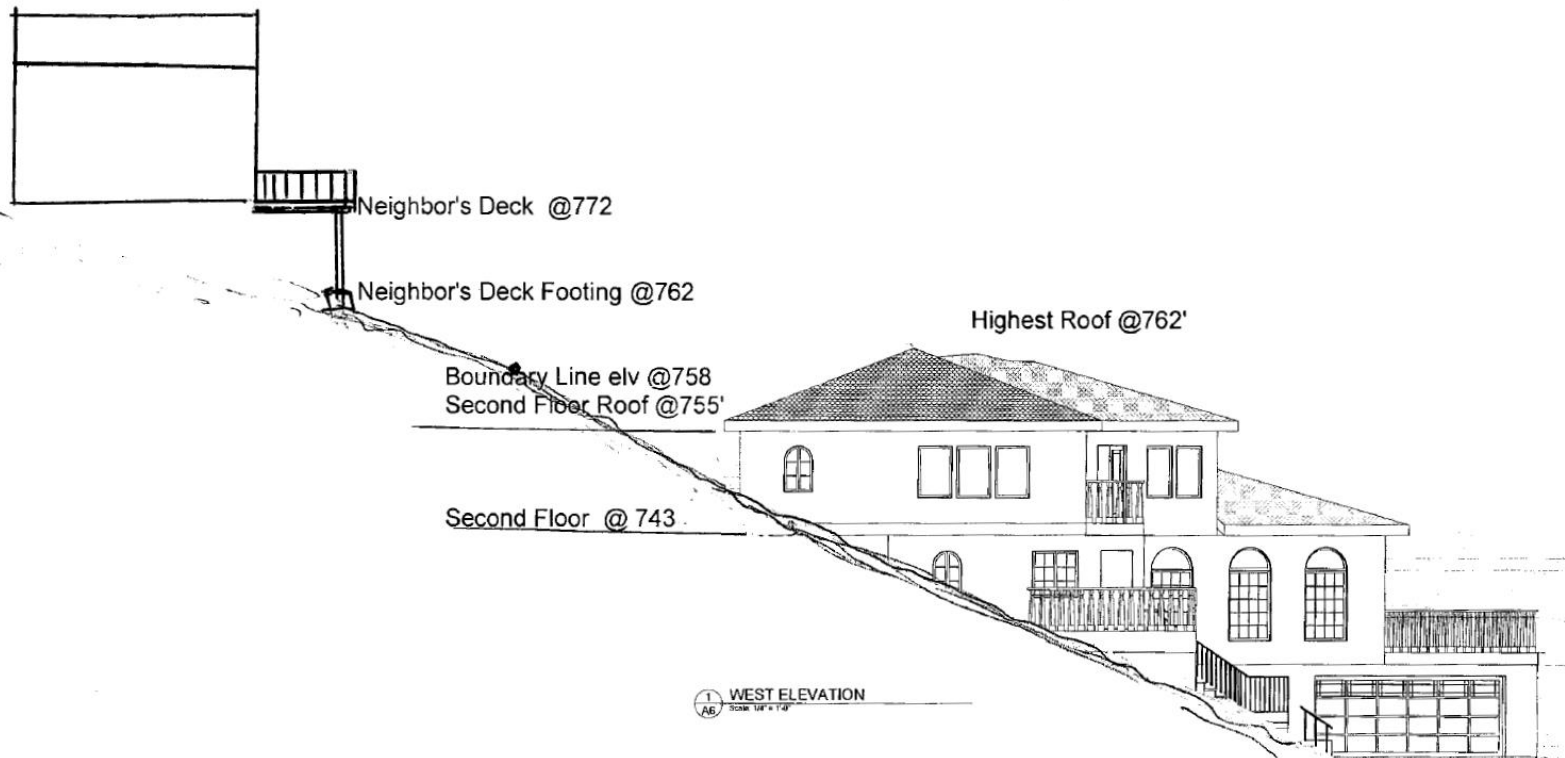


City Council review the grading and drainage plans and make the required findings to approve the Site Plan Review and adopt the Initial Study and Mitigated Negative Declaration, subject to the recommended conditions of approval.

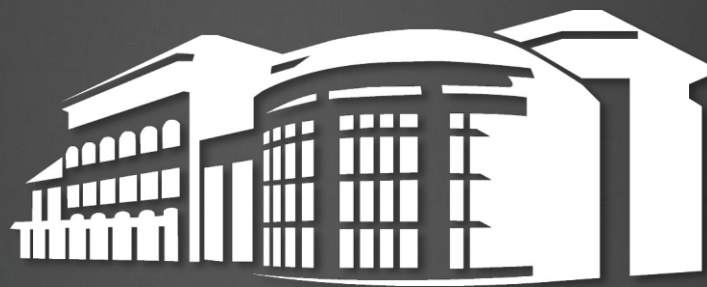
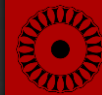
Questions & Discussion



Proposed Project



Item #8 LB 16-099



COUNCIL ECONOMIC DEVELOPMENT COMMITTEE CHANGES

Background



- ▶ CEDC oversees the economic development activities and initiatives of the City
 - ▶ Provides Councilmembers opportunity to provide direction to staff as well as obtain a more in-depth look at all City economic development activities.
- ▶ Several years ago Council moved to add four members of the public/local business community to utilize their expertise/experience

Recommendation

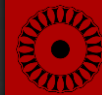


- ▶ Public committee membership has not produced the originally desired benefits.
 - ▶ Active Membership difficult to maintain
- ▶ Staff recommends returning the Committee's membership to three council members
 - ▶ CEDC has two vacancies. Staff recommends not filling them and allowing the remaining two to complete their remaining terms.
- ▶ Staff recommends adding a permanent agenda item for each CEDC meeting.
 - ▶ Presentation from outside speaker to provide an update on any number of economic development related issues.

Questions & Discussion



Item #9 LB 16-100



RESOLUTIONS IN SUPPORT OF PROPOSITION 55 AND OPPOSITION TO PROPOSITION 65

Proposition 55 Background



- ▶ In 2012 Californians passed Proposition 30 to help safeguard against education funding cuts following the Great Recession
- ▶ Raises \$6B Annually through:
 - ▶ Temporary $\frac{1}{4}\%$ Sales Tax Increase (4 years)
 - ▶ Temporary Income Tax increases on taxable income above \$250,000 (7 years)
- ▶ 90% of revenue earmarked for K-12, with remaining portion reserved for community colleges.

Proposition 55



- ▶ Extends the Prop. 30 income tax increases for 12 years, expiring in 2030
- ▶ 50% of revenue would be earmarked for education
 - ▶ 89% for K-12, 11% for Community College Districts
- ▶ Allocates \$2B annually for healthcare programs for lower income individuals (Medi-Cal).
- ▶ Remaining revenues for increasing budget reserves and debt service payments
- ▶ Staff Recommendation: Support
 - ▶ *Legislative Priority 1.6D Support legislation and initiatives that boost funding for local school districts, public institutions of higher education and for low income students.*

Proposition 65 Background



- ▶ State passed the Plastic Bag Ban (SB270) in 2014.
- ▶ 150 Californian Cities have passed bans on plastic bags, including Hayward.
- ▶ Proposition 65 is a competing initiative with Proposition 67
 - ▶ Council officially supports Proposition 67
 - ▶ If both propositions pass, the proposition with the most votes will take precedence

Proposition 65 Background



- ▶ Redirects revenue stores would collect for selling reusable bags from the stores themselves (as directed in SB270).
- ▶ Creates the State Environmental Protection and Enhancement Fund
 - ▶ Would fund various environmental programs and projects ranging from drought mitigation to beach cleanup
- ▶ LAO determined that implementation provision could be interpreted by courts as preventing Proposition 67 from going into effect.
- ▶ Staff Recommendation: Oppose
 - ▶ Given the uncertainty and potential damaging effects to SB270.

Questions & Discussion

