



HASPA BOARD MEETING

October 14TH 2021

How to provide spoken Public Comment during the HASPA Meeting:

Telephone:

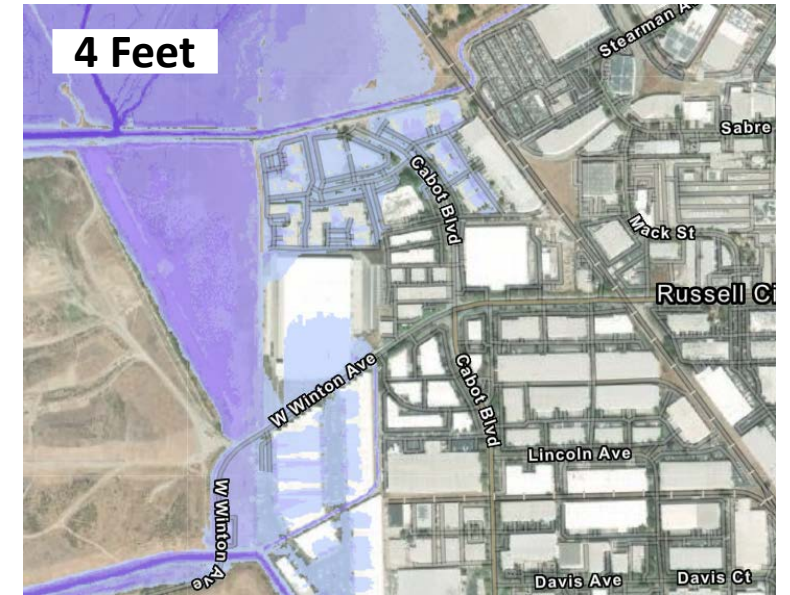
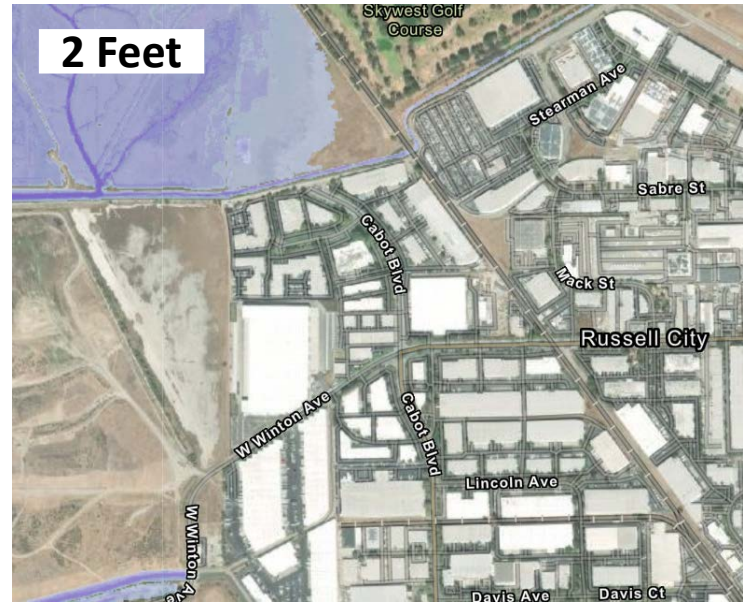
1. Call the appropriate Zoom meeting conference call number provided prior to the close of public comment on an item as indicated by the Meeting Chair. To comment or ask a question while on the phone, dial *9 to notify raise your hand. Your microphone will be unmuted when it is your turn to provide public comment. You will hear “you are unmuted”. Proceed with your comments.

Online:

1. To comment or ask a question, hit the Raise Hand button while in the Zoom meeting and wait to be called on by your screen name. When it is your turn, your name will be called out and you will be unmuted for the duration of your comment.

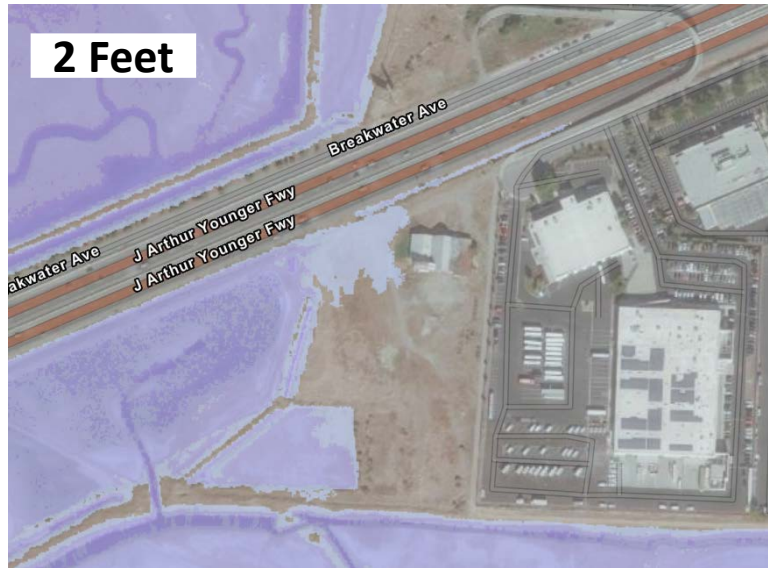
Amazon Last Mile Delivery Station

2695-2893 West Winton

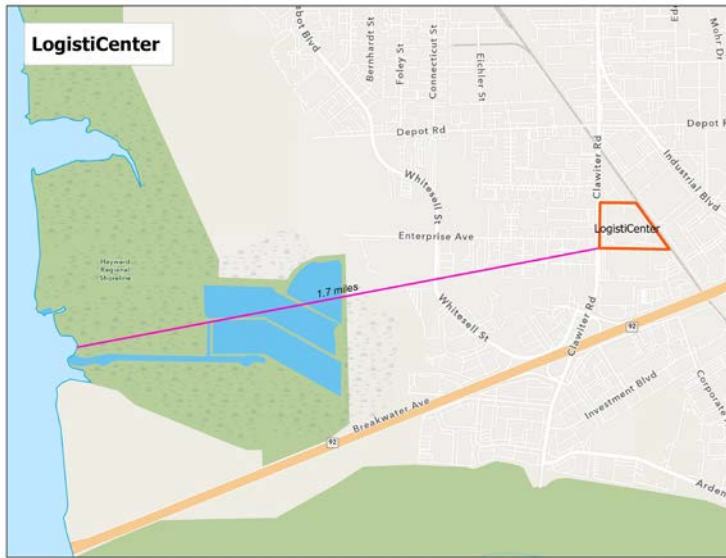


U-Haul Development

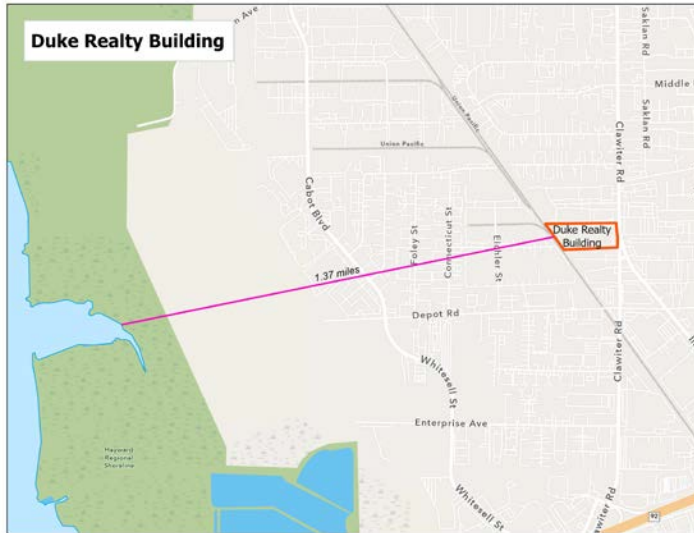
4150 Point Eden Way



LogistiCenter 25450 Clawiter Road



Duke Realty Building 24493 Clawiter Road



Industrial Shell Building 3636 Enterprise





San Lorenzo/Bockman Channel Levee



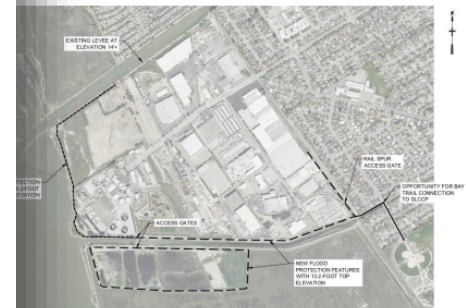
Hayward Area Shoreline Planning Agency (HASPA)

San Lorenzo-Bockman Levee Project

Technical Assistance and Services

FINAL – SEPTEMBER 20, 2021

rection to the WWTP and surrounding industrial areas and does not cross Bockman Channel south of this will allow the existing tide gate on Bockman Channel to operate in its current configuration. The alternative also includes independent features that surround the lagoons and solar field located south of the alignment includes flood gates and/or ramps where maintenance vehicles will need to cross channel to allow operators access to the lagoons and solar field. A flood gate is also included where the access a rail spur near the eastern terminus of the alignment. A map that summarizes the proposed flood gate locations is provided on Figure 3-7.



Proposed Features and Protection Elevations. Base Imagery: Google Earth

water and seepage water will need to be pumped during high-water events. The Oro Loma WWTP at both the WWTP and the drying bed area south of the facility have existing stormwater pumping. The existing pump stations may need to be upgraded to accommodate seepage water, although expected to be minor. A more detailed analysis of surface stormwater runoff and seepage water and the capability of the existing pump stations should be evaluated during a subsequent phase of

Segments and Cross-Sections

The resiliency features include raising existing earthen berms and installing flood walls. To meet the desired flood protection elevations described in Section 3.1, the existing ground surface and embankment crest elevations will need to be raised by 1 to 6 feet. The amount of elevation increase required along the proposed

www.arcadis.com
2021-09 Oro Loma Sanitary District, FINAL

11

Description		Total
	Subtotal:	\$ 25,465,257
Market Condition Adjustment	10.0%	\$ 2,546,526
	Subtotal (rounded):	\$ 28,000,000
Contract Allowance (Pedestrian Bridge and Permitting)		\$ 7,000,000
	Total:	\$ 35,000,000

Instruction Cost Summary

Benefit Cost Analysis (BCA)

Methodology and Results

Methodology, detailed in the Benefit Cost Analysis Technical Memorandum, outlines the steps that were used to calculate a Benefit Cost Ratio (BCR) of 2.12, with \$44,660,522 (including \$700,000 per year in benefits) and \$94,616,137 in benefits.

Methodology is a robust process for quantifying avoided losses from complex flood sources with the limited set of historical events readily available. For building physical damages, FEMA's BCA Toolkit Version 6.0 was used. Recurrence intervals and FEMA's Flood Insurance Study (FIS) were used to calculate the Flood Insurance Study has percent annual chance data for the following probabilistic floods:

- 1-(500-year)
- 1-(100-year)
- 1-(50-year)
- 1-(10-year)

The FEMA BCA Toolkit Version 6.0 was used to obtain the BCR for the proposed mitigation activities at the Oro Loma Sanitary District. The narrative in the Benefit Cost Analysis Technical Memorandum provides the methodology used to obtain the BCR. Following the FEMA BCA Reference Guide and Supplement, the BCA includes engineering assessment and statistical determinations of likely occurrence and associated damages during flood events. The Damage Frequency Assessment (DFA) methodology was used within the BCA Toolkit, as it is appropriate for utilities and other critical services, such as wastewater utilities. For the purposes of this DFA methodology was used to assess the benefits of wastewater service for the Oro Loma WWTP.

The methodology used to complete this BCA is based on Federal Emergency Management Agency (FEMA) policy and includes the mitigation benefits of continuity of wastewater service to the service population of the Oro Loma Sanitary District. In accordance with the FEMA BCA Reference Guide and Supplement, expected loss data can be used to estimate benefits to be used in the benefit cost analysis. This approach involves calculating losses based

www.arcadis.com
2021-09 Oro Loma Sanitary District, FINAL

20



Extension of HASPA JPA for Six-Month Period

HASPA TAC

Expansion of HASPA

HASPA TAC

South Bay Salt Pond Restoration Project

DAVE HALSING



South Bay Salt Pond Restoration Project

Restoring the Wild Heart of the South Bay



April 2008



September 2009



May 2010



October 2010

SALT POND A21 SOUTH BAY SALT POND RESTORATION PROJECT

Kite aerial photographs of a small channel in the northeast corner following the 2006 breach to tidal flow. Field of view is ~ 120 feet. . C. Benton



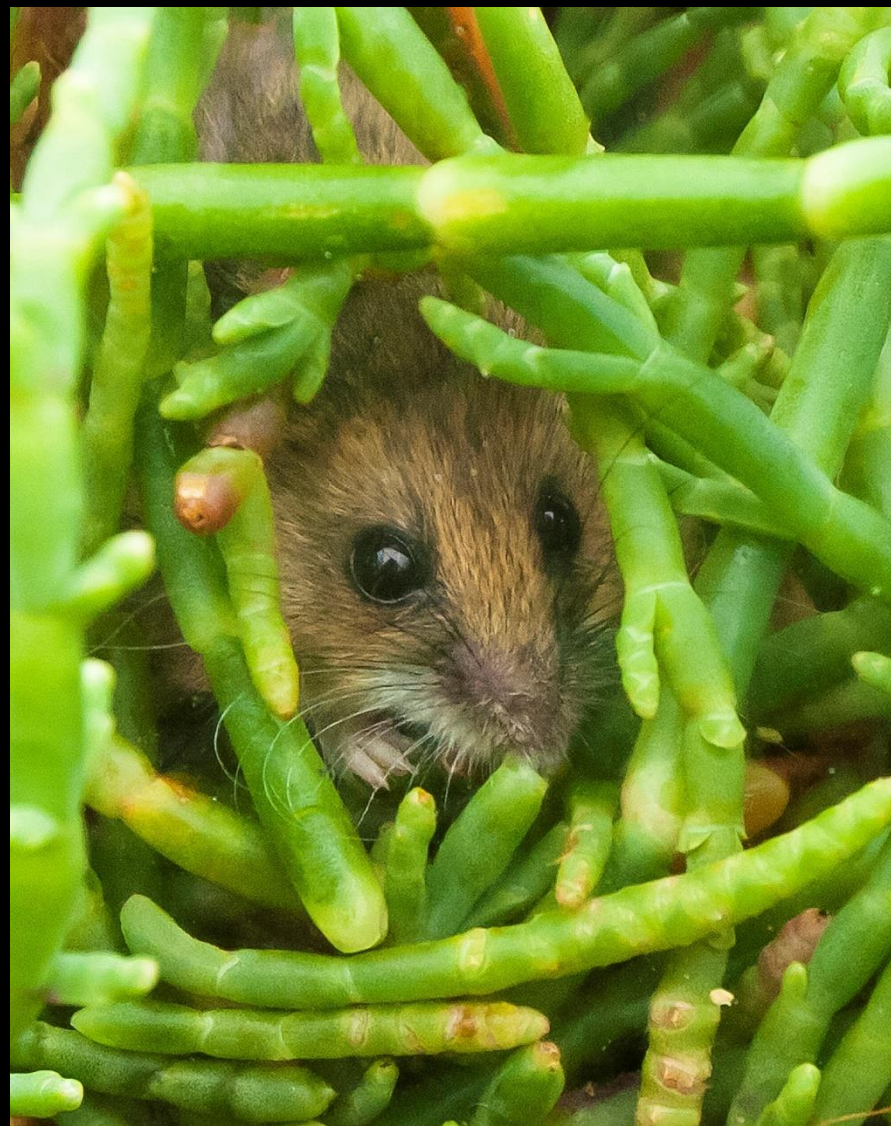
Dave Halsing, Project Manager
HASPA Board Meeting
October 14, 2021



Callie Bowdish



Habitat Restoration





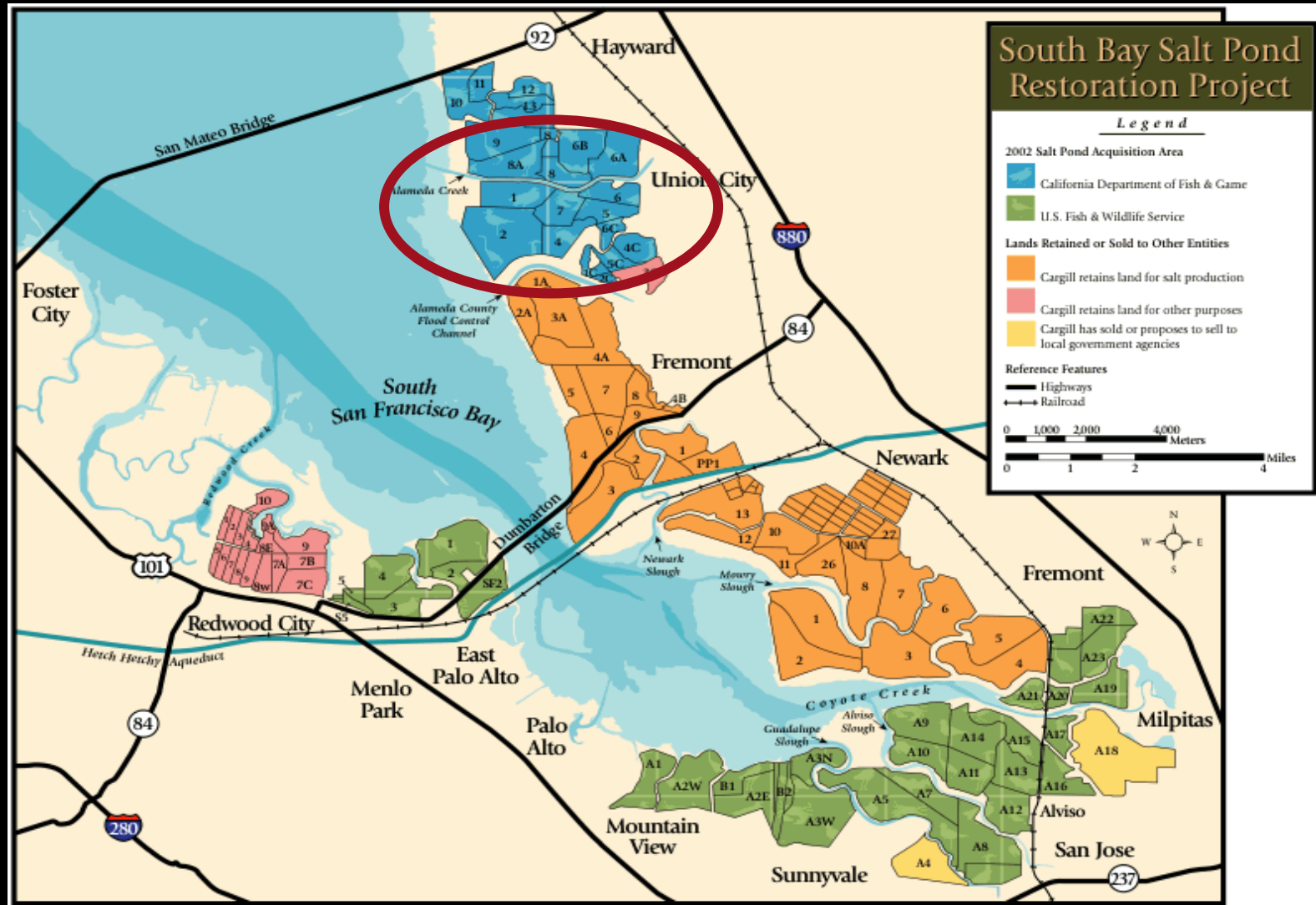
Flood Risk Management





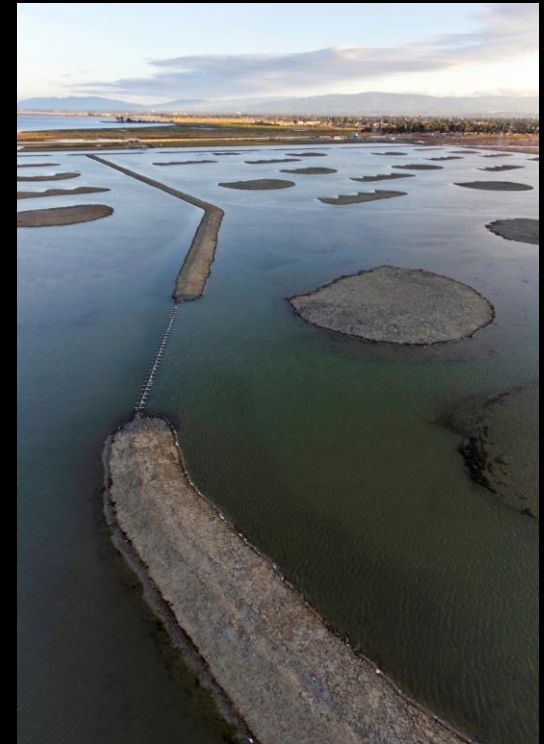
Public Access and Recreation

Phase 2 at Eden Landing





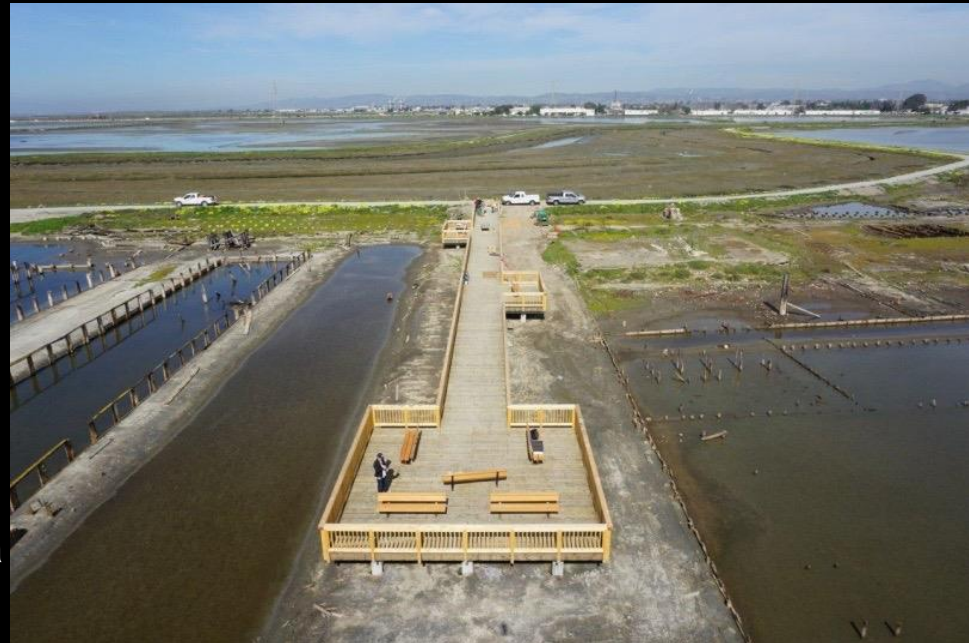
**3,000 acres
of tidal &
muted tidal
restoration;
700 acres
enhanced
managed
ponds**



Public Access
7 miles of new trails
Levee-top
Boardwalk
Viewing platforms
Kayak launch



Pelican Media



Project Location

- **All of southern Eden Landing**
- **Between Old Alameda Creek and Alameda County Flood Control Channel**
- **CDFW lands in limits of City of Hayward**
- **Most access via City of Union City**

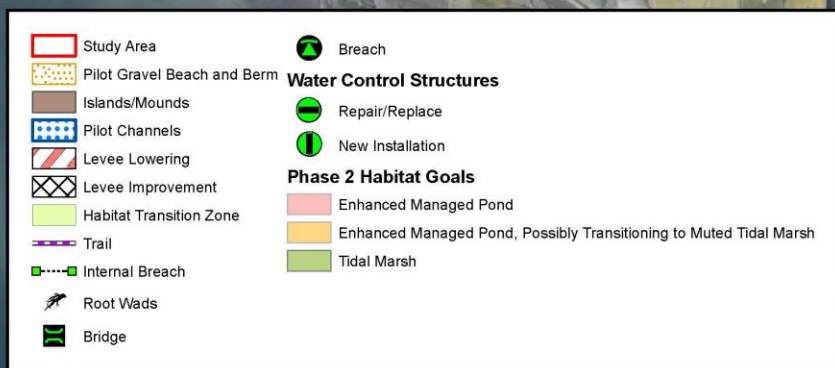
Phase 2 at Eden Landing



Project Description

- **1,635 acres of tidal marsh (Bay Ponds)**
- **765 acres of enhanced ponds (Inland Ponds)**
- **450 acres of muted tidal (Southern Ponds)**
- **4 miles of Bay Trail + viewing areas**
- **Community connection to Union City**
- **Multiple lines of levee enhancement**
- **Sea-level rise adaptation**
- **Add stormwater management capacity for Flood Control District**

Phase 2 – Stage A



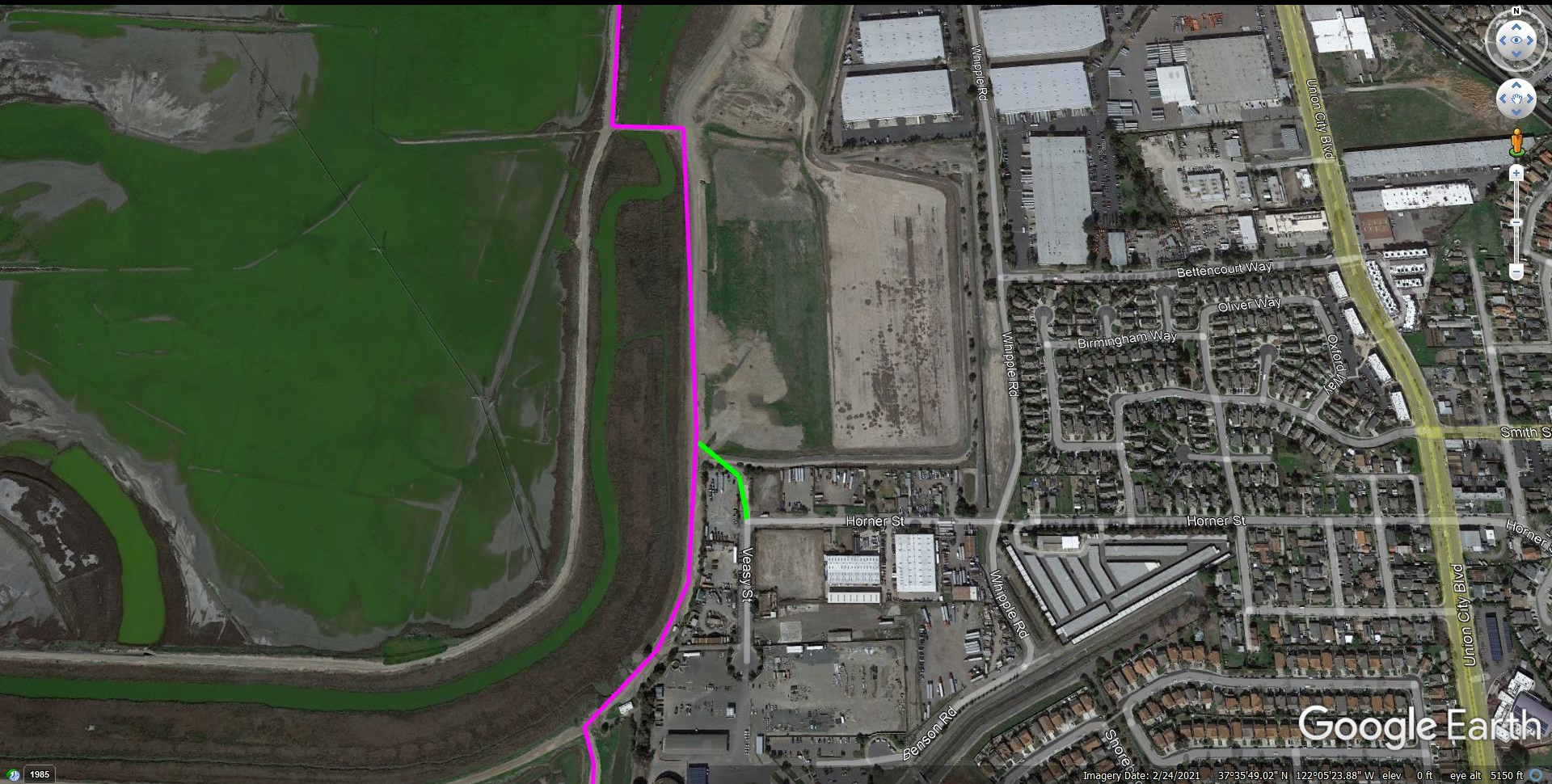
Public Access



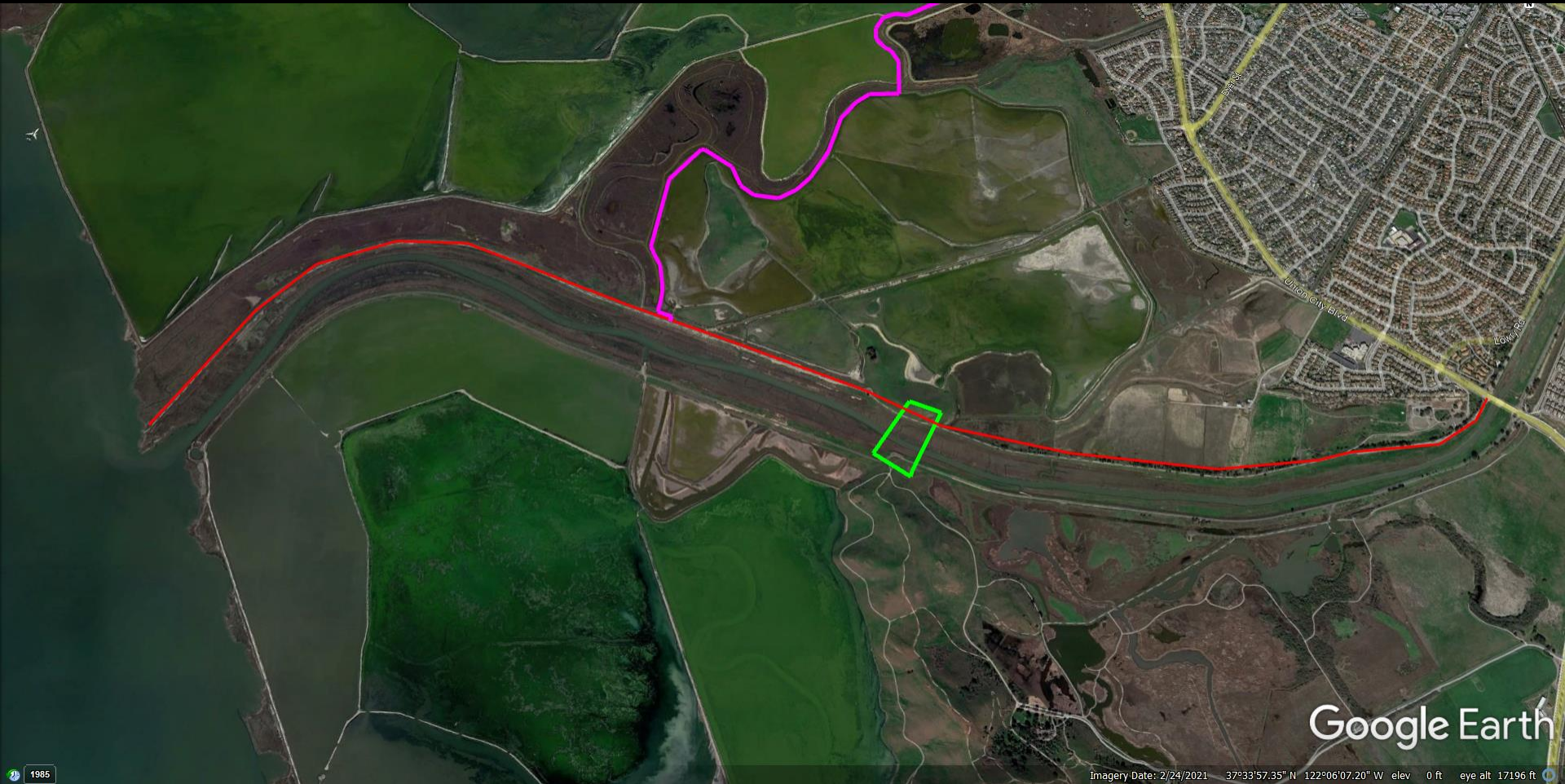
Public Access



Public Access



Public Access



Phase 2 Status

- **Planning began → 2012**
- **Concept design, modeling → 2016**
- **Final EIR → 2019**

Stage A:

- **Design & permitting → 2020-2022**
- **Construction begins → late 2022 or 2023**
- **3-5 years, depending on material availability**

Material import for levee O&M ongoing now

Stage B: Planning resuming now; will lag

Upcoming Event

Stakeholder Forum

- **Virtual meeting**
- **November 3, 1:00 – 3:30**
- **Project status updates**
- **Science plans**
- **Discussion / Q & A**



Other Outreach

- **Community-based orgs**
- **BCDC - Social Equity & EJ Policy**

For More Information



Dave Halsing, Executive Project Manager


dave.halsing@scc.ca.gov

650-814-0588





2022 Meeting Calendar



HAYWARD AREA SHORELINE PLANNING AGENCY
JOINT POWERS AUTHORITY
City of Hayward
East Bay Regional Park District (EBRPD)
Hayward Area Recreation and Park District (HARD)

2022 HASPA MEETING SCHEDULE

Meeting Location: Virtual Participation; or,
Hayward Shoreline Interpretive Center
4901 Breakwater Avenue
Hayward, CA 94545

Meeting Time: 3:00 – 5:00 P.M.

Meeting Dates: The Hayward Area Shoreline Planning Agency (HASPA) meets on the second Thursday of January and April. Special meetings will be scheduled as determined necessary.

January 13, 2022
April 14, 2022

Should there be any questions related to HASPA Trustee meeting dates, times, locations, or ADA accommodations, please contact please contact Amanda Sanders with East Bay Regional Parks District at asanders@ebparks.org.

- **JANUARY 13, 2021**
- **APRIL 14, 2022**



Agenda Setting: January 13, 2022

- Status Updates on Current Planning Applications
- Expansion of HASPA

Meeting Adjournment