

SCOPE OF WORK:

IN GENERAL, THIS PLAN IS FOR THE IMPROVEMENT OF FACILITIES TO SUPPORT A NEW FULL SERVICE (STAFFED) AUTOMOBILE DETAILING OPERATION AS AN EXTENSION OF THE EXISTING AUTOMATED CAR WASH TUNNEL.

THE DETAILING SERVICE WILL OPERATE 7-DAYS PER WEEK FROM 9AM - 5 PM. THE OPERATION WILL EMPLOY ONE EMPLOYEE AND WILL SERVE ONLY ONE VEHICLE AT A TIME.

MORE SPECIFICALLY, FACILITY IMPROVEMENTS SHALL INCLUDE A NEW 12'x18'x10' GAZEBO TO BE ERECTED FOR PROVIDING SHADE TO CUSTOMERS AWAITING THE COMPLETION OF DETAILING SERVICES (SHEET 2).

GENERAL NOTES:

ALL WORK SHALL CONFORM TO ALL APPLICABLE CODES AND ORDINANCES AS ADOPTED BY THE CITY OF HAYWARD.

ALL MANUFACTURED MATERIALS AND EQUIPMENT SHALL BE INSTALLED IN ACCORDANCE WITH THE MANUFACTURER'S SPECIFICATIONS AND INSTRUCTIONS.

SHEET INDEX:

- 1 - SITE PLAN
- 2 - NEW PRE-MANUFACTURED GAZEBO
- 3 - LANDSCAPE AREA SIZE

PURPLE LEAF



12'x18' (x 10' H)

SKU: ZYO4GHTG2B

HARDTOP GAZEBO
WITH DOUBLE ROOF

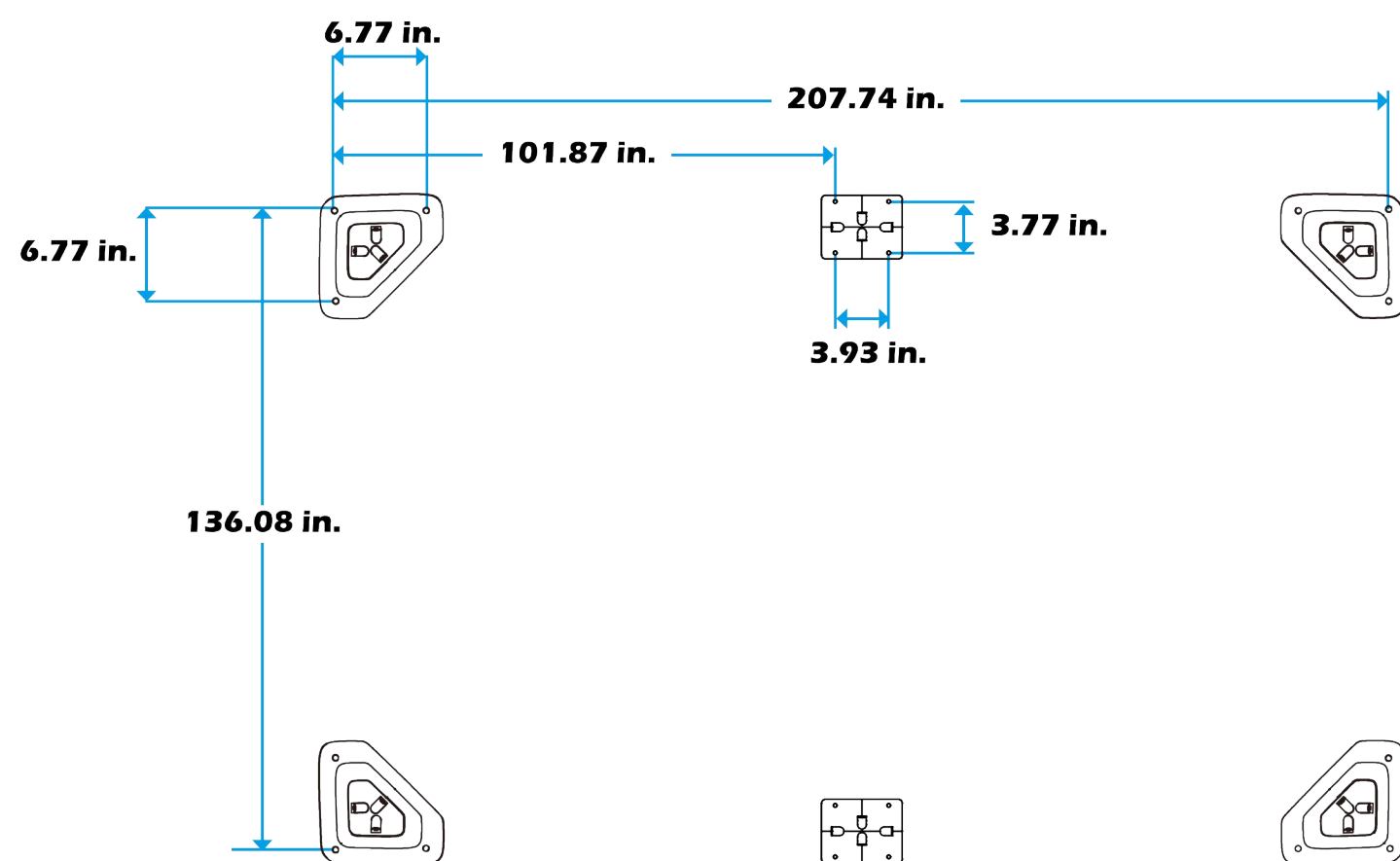
Assembly Manual

©Copyright 2016-2022 Purple Leaf Inc. All Rights Reserved

PLAN VIEW

MOUNTING BLUEPRINT

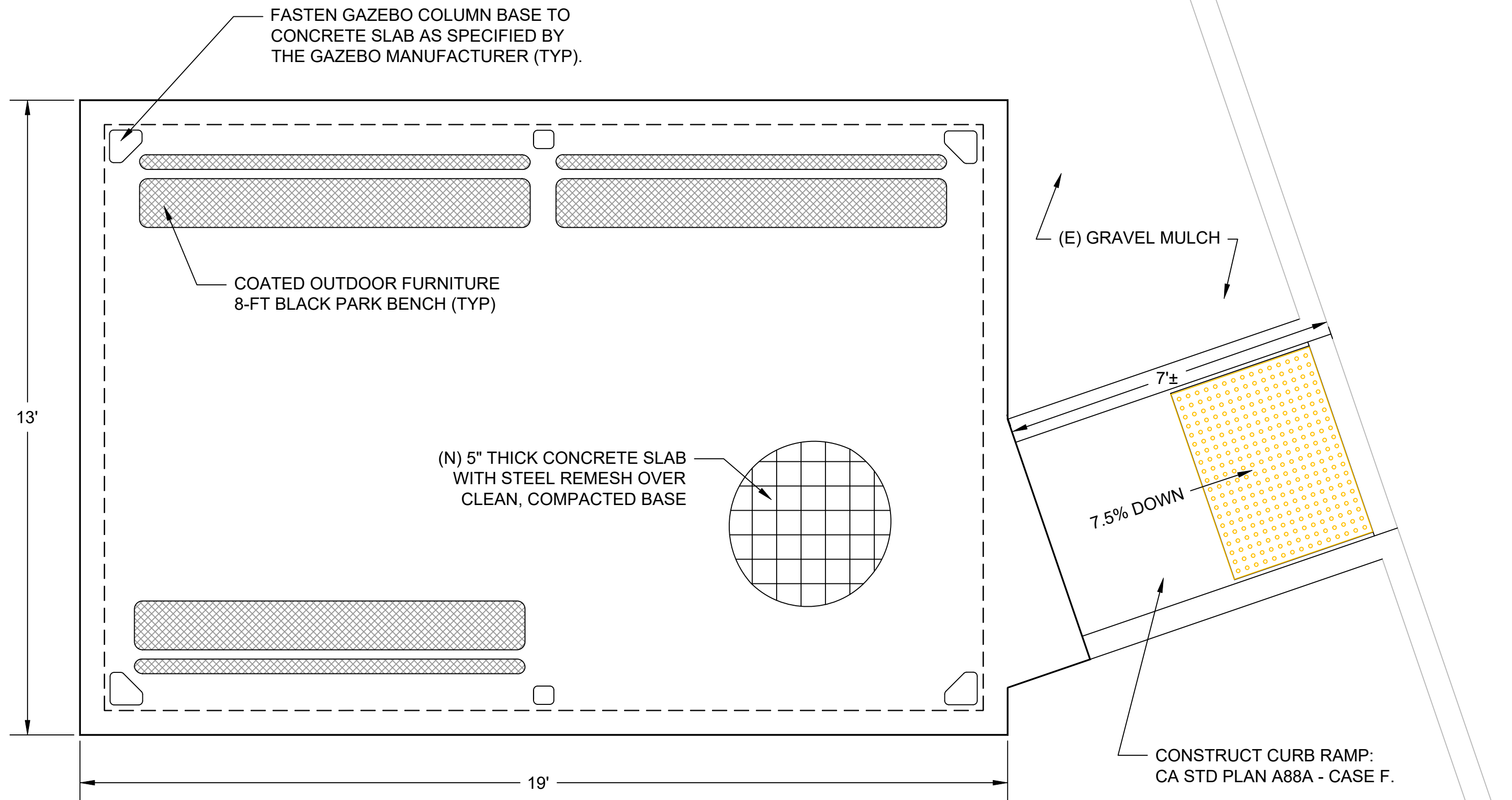
Gazebo 12x18



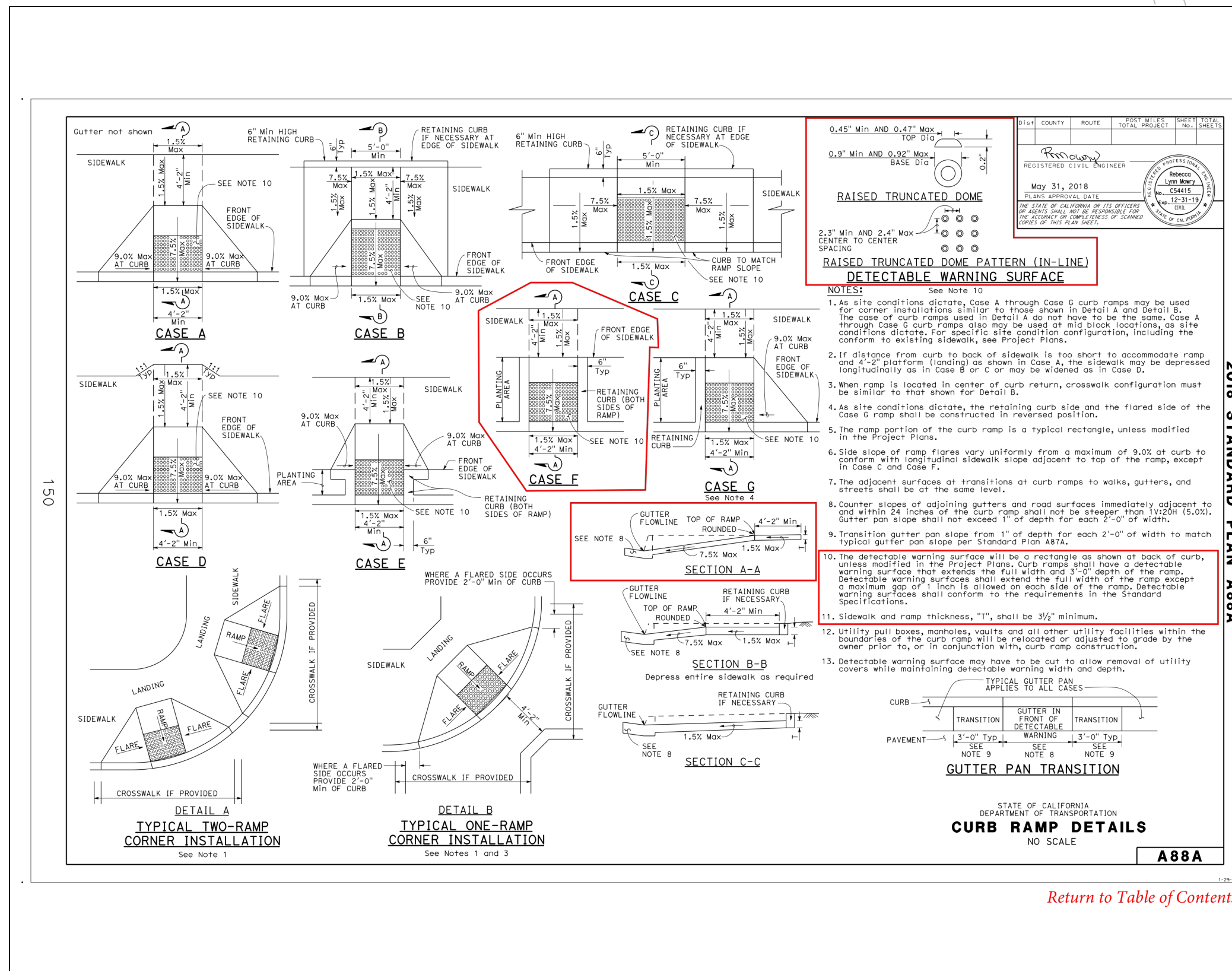
5



QR CODE TO GAZEBO MANUAL



PLAN VIEW
SCALE 1/2" = 1'

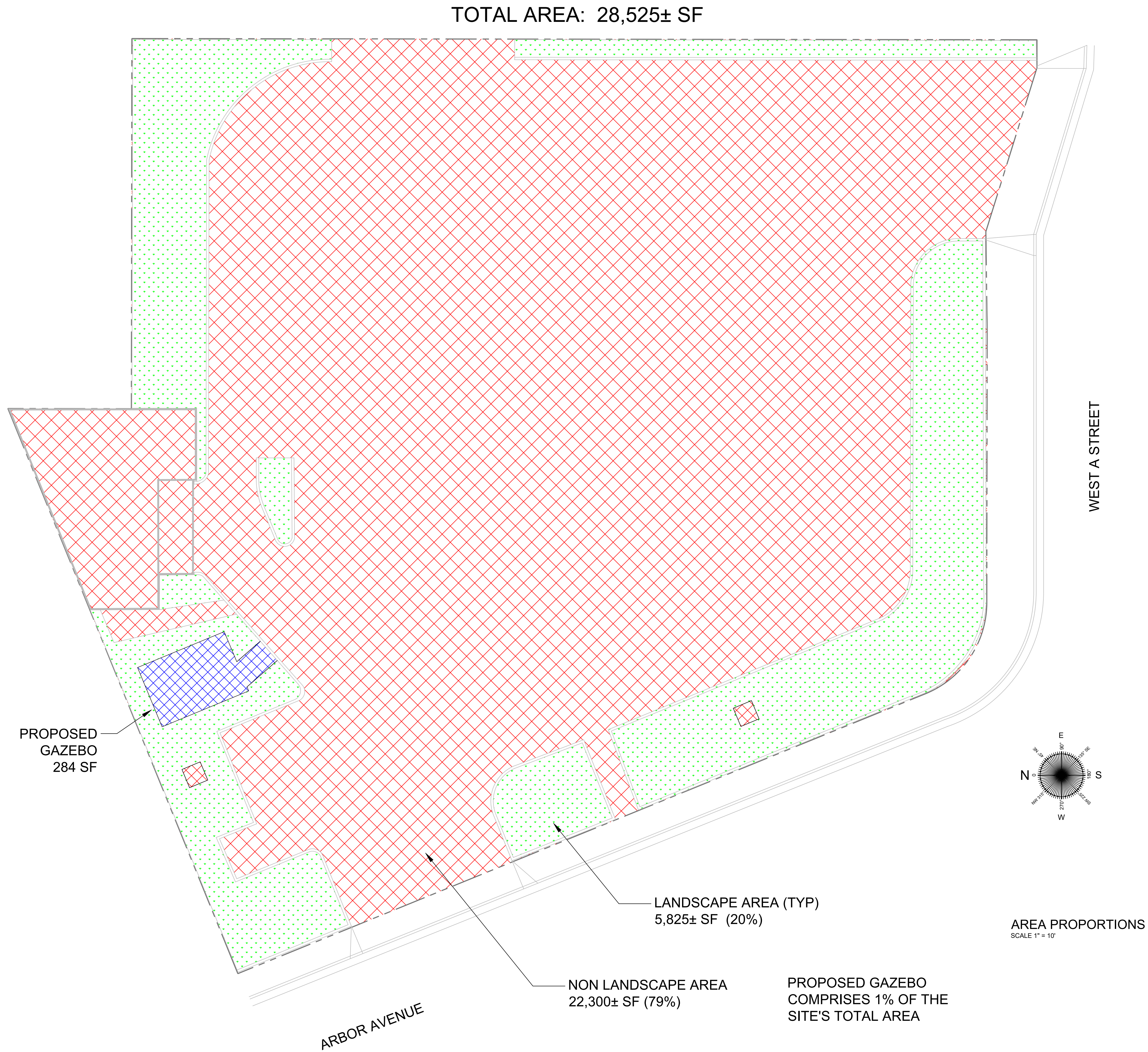


[Return to Table of Contents](#)

ALACO ENGINEERING
612 B ST, HAYWARD, CA 94541
www.alaco.us 510-200-8414

DATE
AUG 8, 2022 Plans for Building Permit by L.Mohamm, P.E.

Heart of the Bay Car Wash
391 West A St, Hayward, CA
Gazebo Seating Area



ALACO ENGINEERING
612 B ST, HAYWARD, CA 94541
www.alaco.us 510-200-8414

DATE
AUG 8, 2022 Area Calculations by L.M. Johmann, P.E.

Heart of the Bay Car Wash
391 West A St, Hayward, CA

Landscape Area Size