



mwa architects



WPCF Administration Building

Exterior Concept Design Review

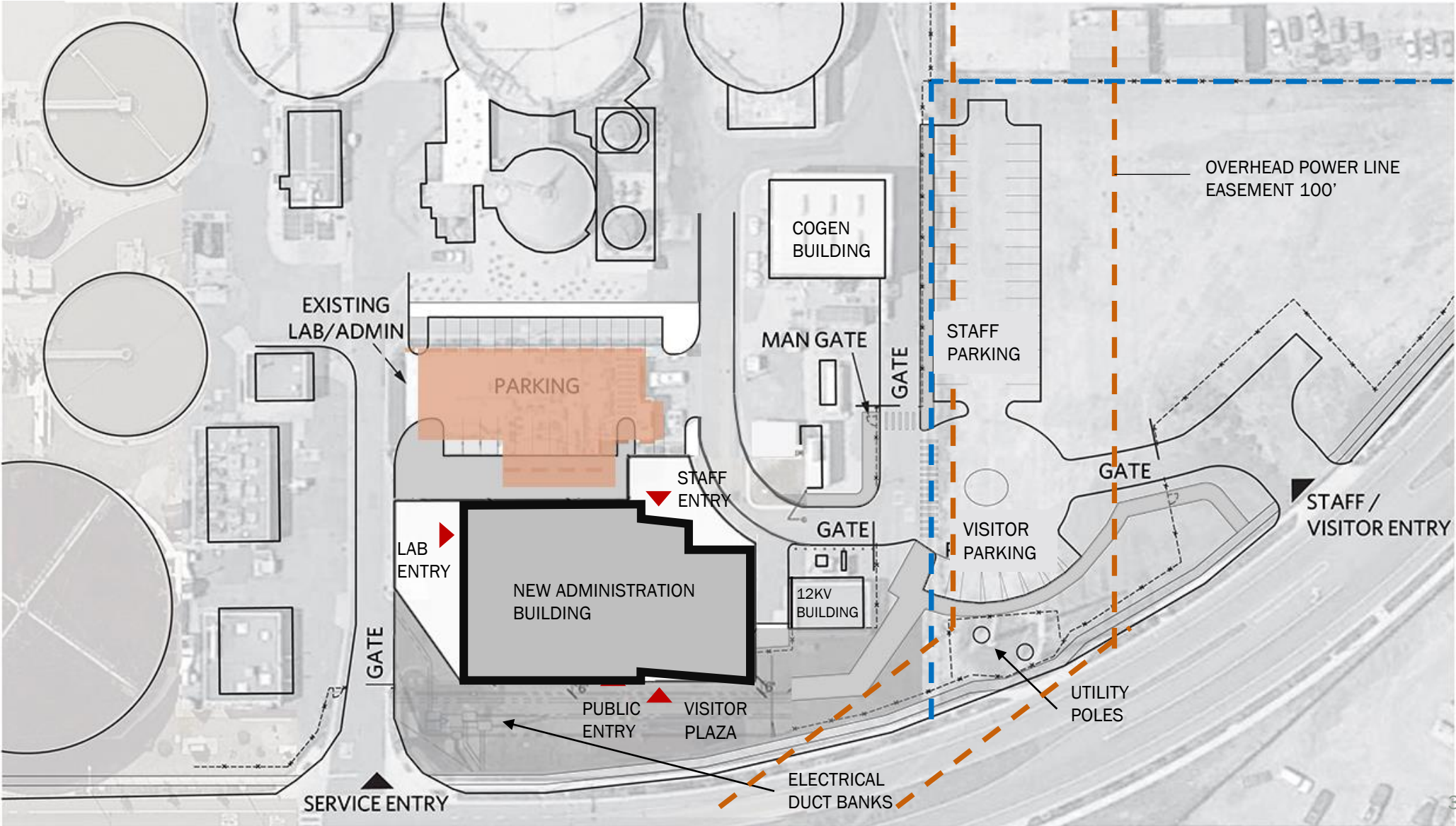
November 30th, 2022



Agenda

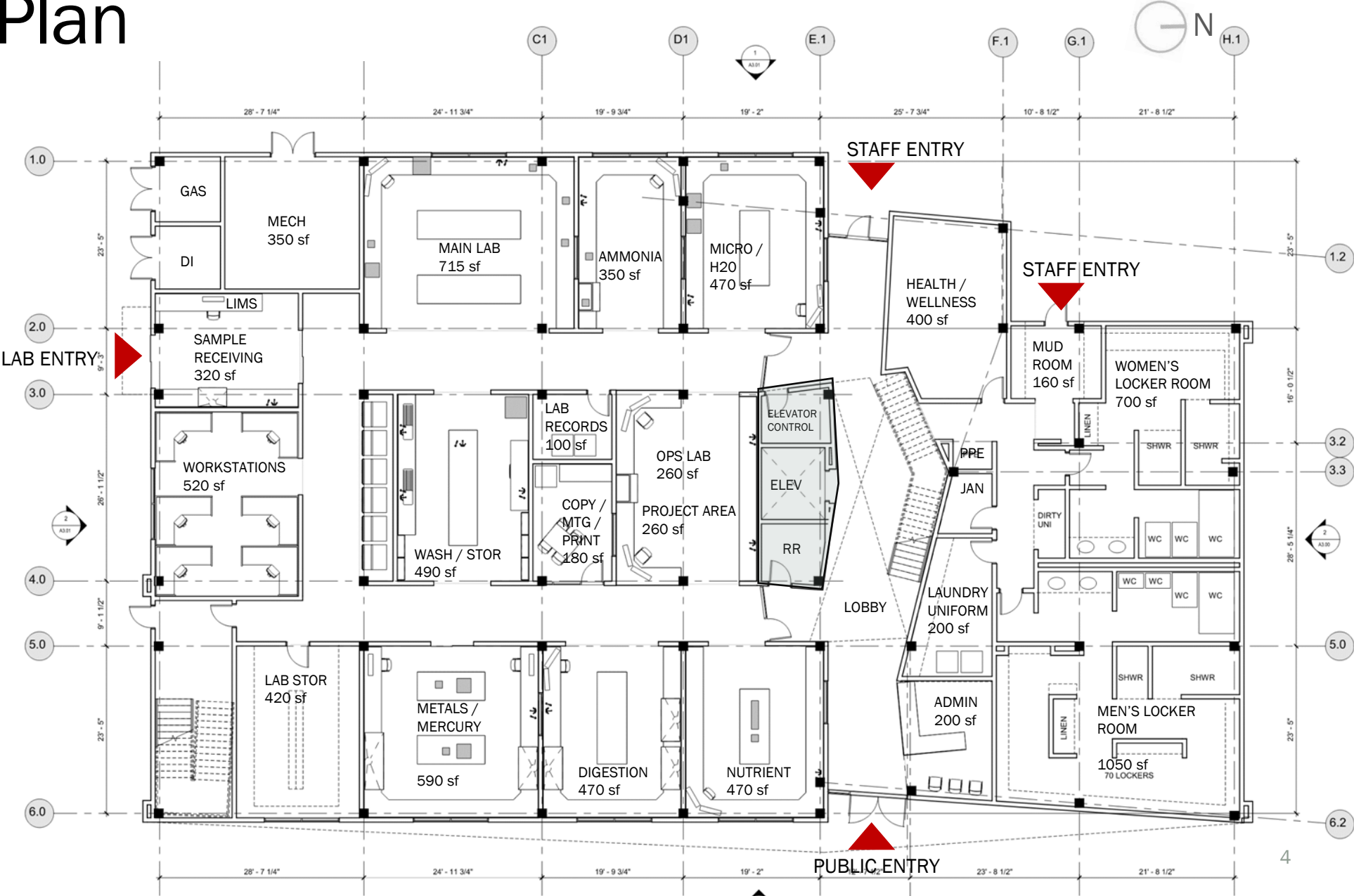
1. Building Layout Overview & City Comments – 30 min
2. Building Exterior Design Concept – 30 min
3. Landscape Design Concept – 30 min
4. Next Steps

Site Plan



First Floor Plan

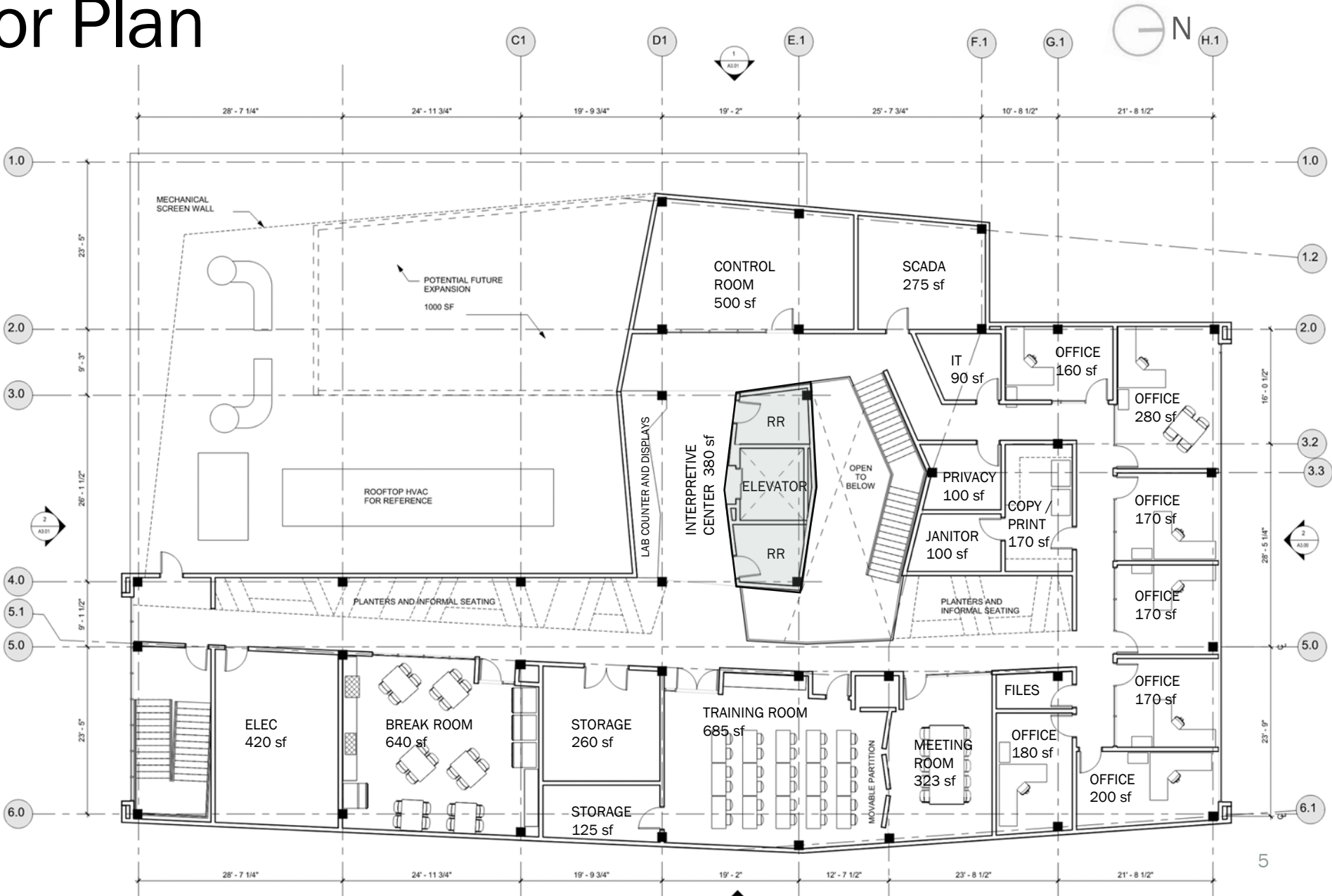
13,200sf
21,800sf total



Second Floor Plan

8,600sf
21,800sf total

1,000sf potential
expansion



Design Inspiration

INTERSECTION OF EARTH'S NATURAL ELEMENTS



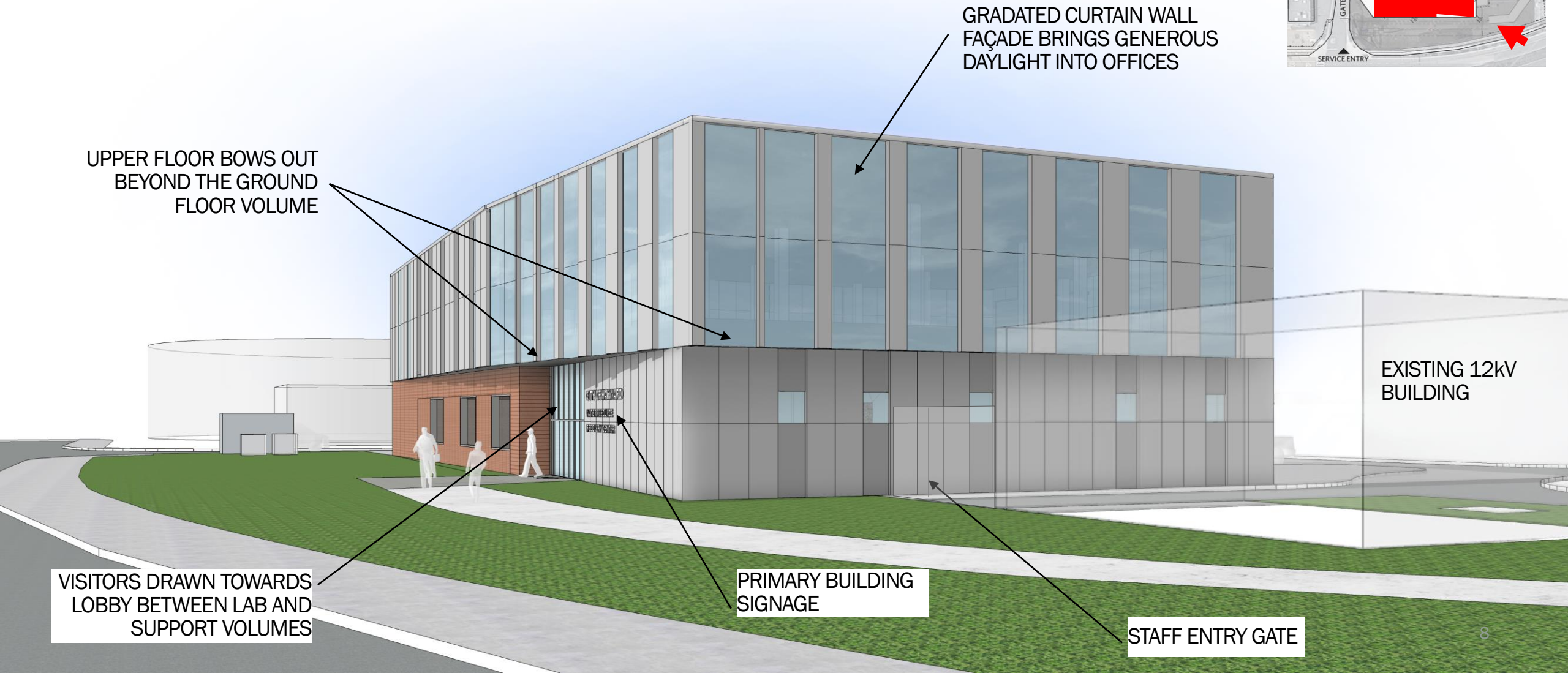
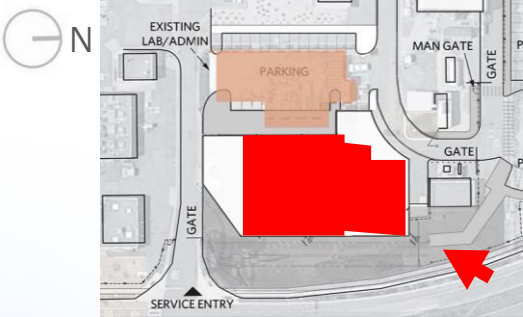
Biophilic Interiors

INCORPORATING NATURE INTO THE INDOOR ENVIRONMENT



View 1

Southwest from Whitesell



GRADATED CURTAIN WALL
FAÇADE BRINGS GENEROUS
DAYLIGHT INTO OFFICES

UPPER FLOOR BOWS OUT
BEYOND THE GROUND
FLOOR VOLUME

VISITORS DRAWN TOWARDS
LOBBY BETWEEN LAB AND
SUPPORT VOLUMES

PRIMARY BUILDING
SIGNAGE

STAFF ENTRY GATE

EXISTING 12kV
BUILDING

View 2

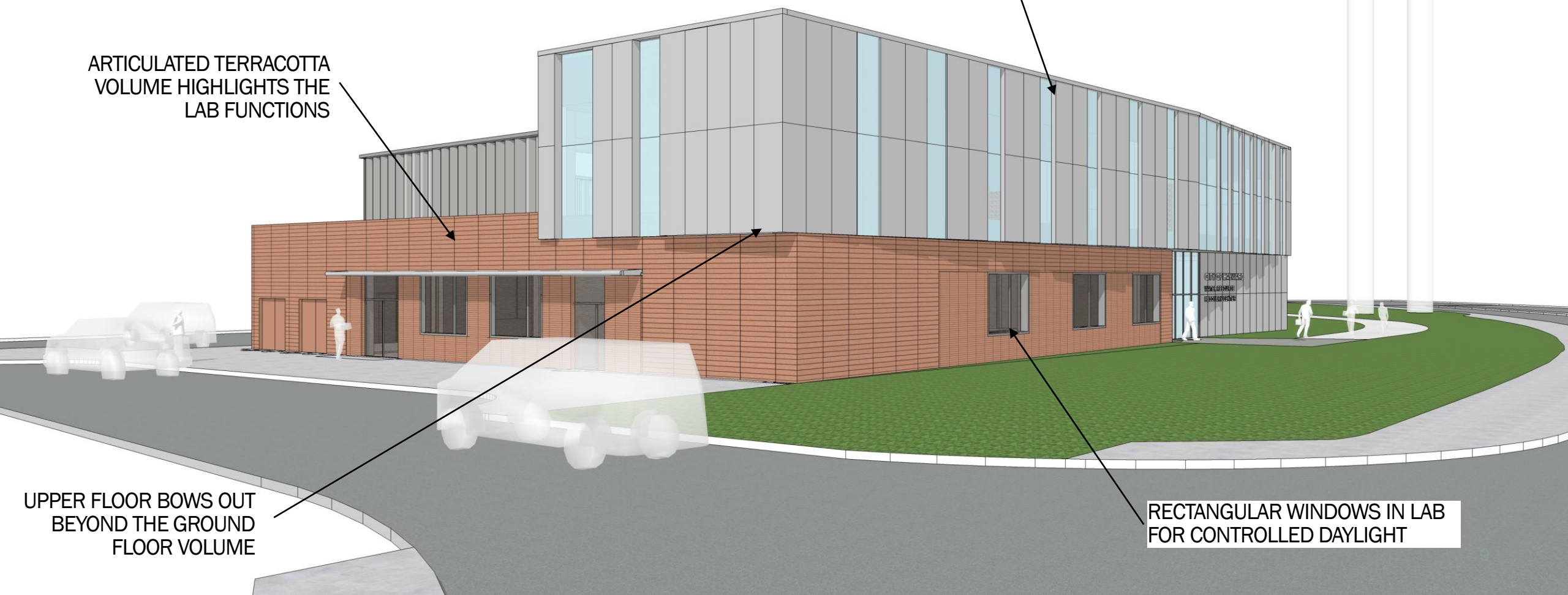
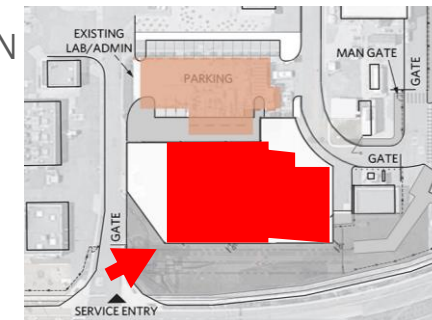
Northwest from Existing Plant Gate

SLOT WINDOWS FOR BALANCE
OF DAYLIGHT AND PRIVACY IN
BREAK AND TRAINING ROOMS

ARTICULATED TERRACOTTA
VOLUME HIGHLIGHTS THE
LAB FUNCTIONS

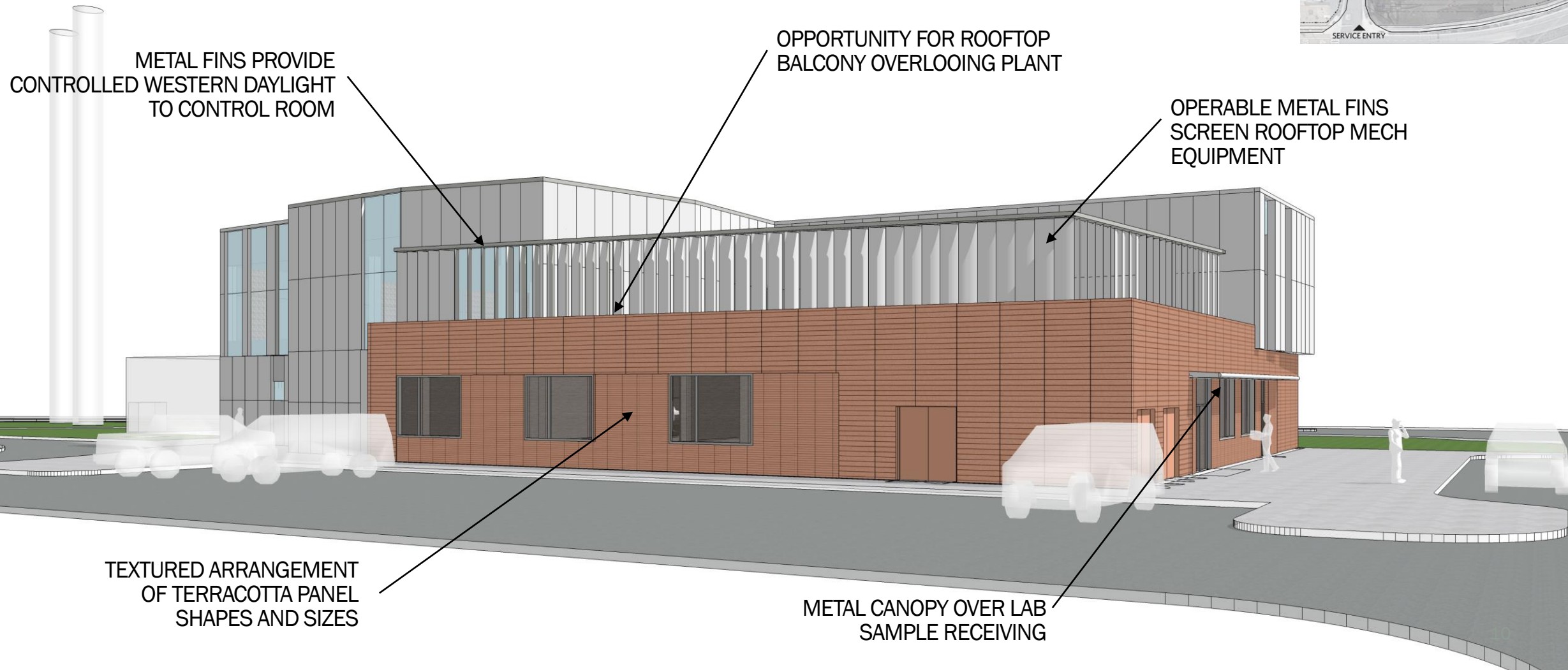
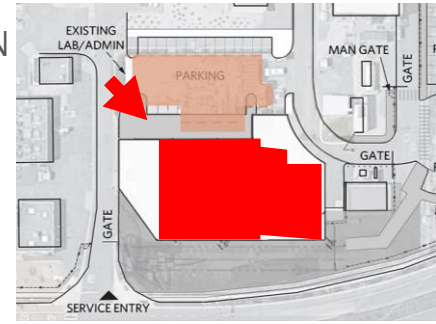
UPPER FLOOR BOWS OUT
BEYOND THE GROUND
FLOOR VOLUME

RECTANGULAR WINDOWS IN LAB
FOR CONTROLLED DAYLIGHT



View 3

Northeast from Plant



METAL FINNS PROVIDE
CONTROLLED WESTERN DAYLIGHT
TO CONTROL ROOM

OPPORTUNITY FOR ROOFTOP
BALCONY OVERLOOKING PLANT

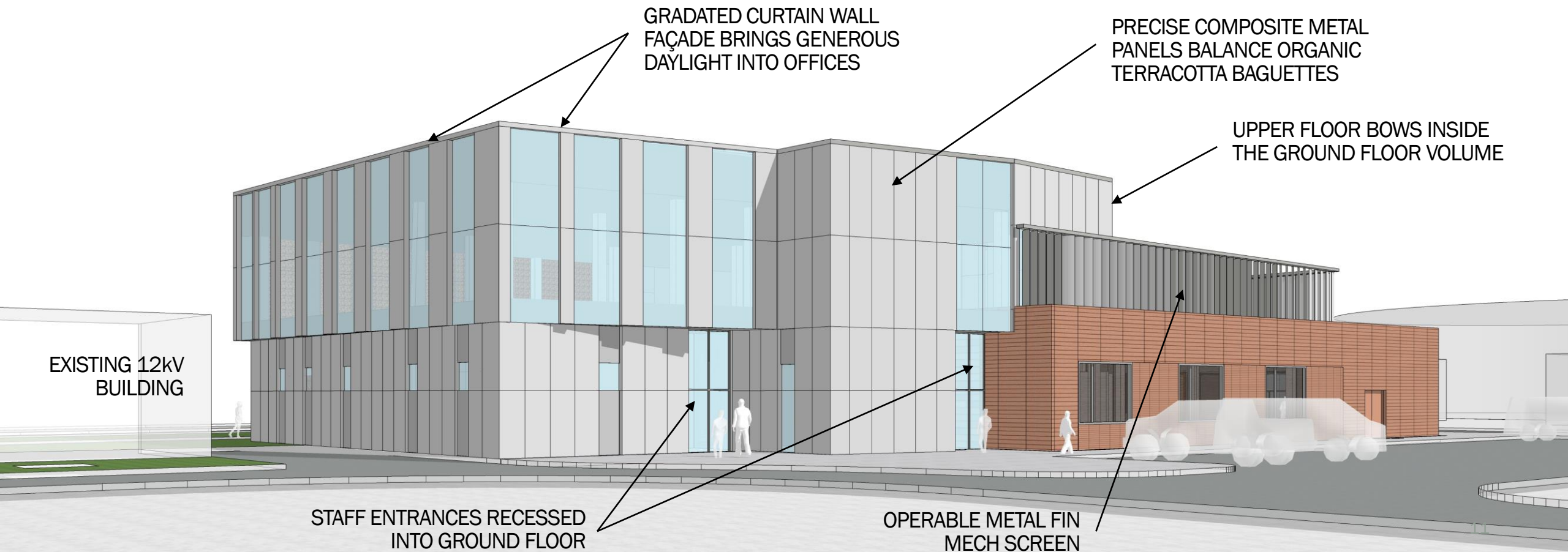
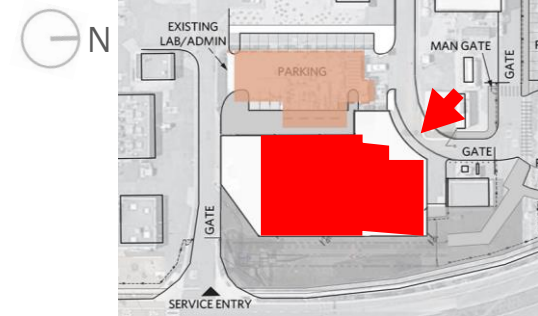
OPERABLE METAL FINNS
SCREEN ROOFTOP MECH
EQUIPMENT

TEXTURED ARRANGEMENT
OF TERRACOTTA PANEL
SHAPES AND SIZES

METAL CANOPY OVER LAB
SAMPLE RECEIVING

View 4

Southeast from Plant



Metal Wall Panels

Composite aluminum panels create a precise, modern skin



Terracotta Wall Panels

Warm, familiar material with natural colors and variety of shapes and textures



Curtain Wall Glazing

Transparent and opaque glass in floor to roof panels to maximize views and daylight



Exterior Color Options

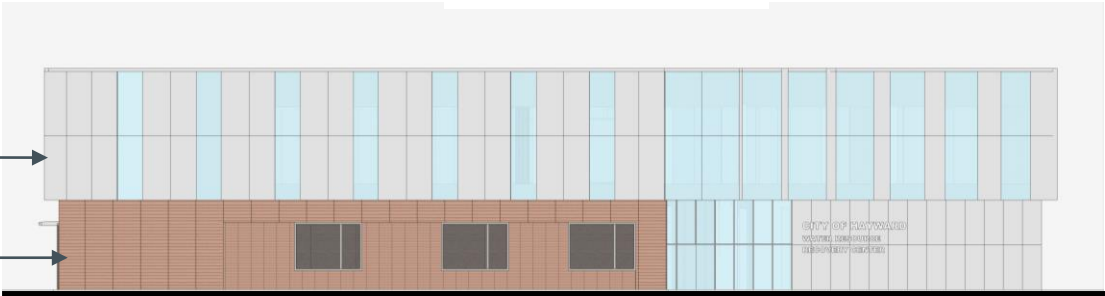
East Elevation - Whitesell St

South Elevation - Lab Entry

OPT 1

Silver Metal

Natural Terracotta



OPT 2

Natural Terracotta

Silver Metal



OPT 3

Grey Metal

Tan Terracotta



Exterior Color Options

West Elevation - Plant Side

North Elevation - Visitor Entry

OPT 1

Silver Metal

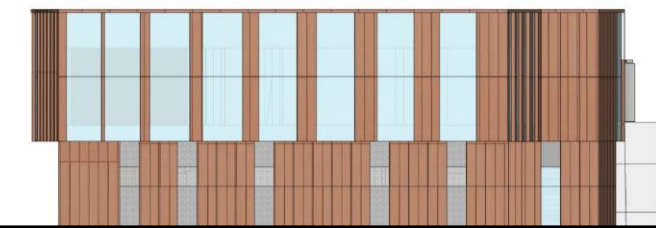
Natural Terracotta



OPT 2

Natural Terracotta

Silver Metal



OPT 3

Grey Metal

Tan Terracotta



Site Plan



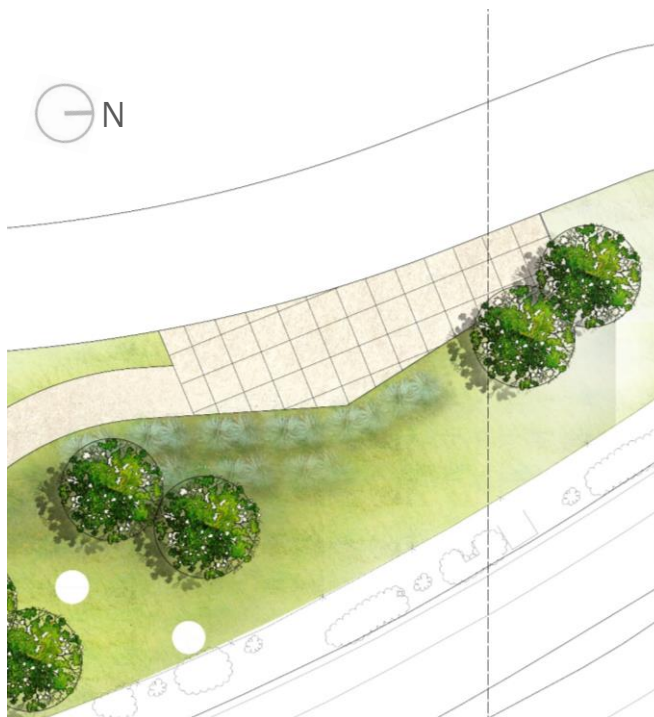
The landscape design provides a clear path of travel from the parking area to the building entry, while also offering moments to pause along the way.

Landscape elements interpret the administrative building's architectural theme of flow through the use of varied paving materials, site furnishings, and native planting.

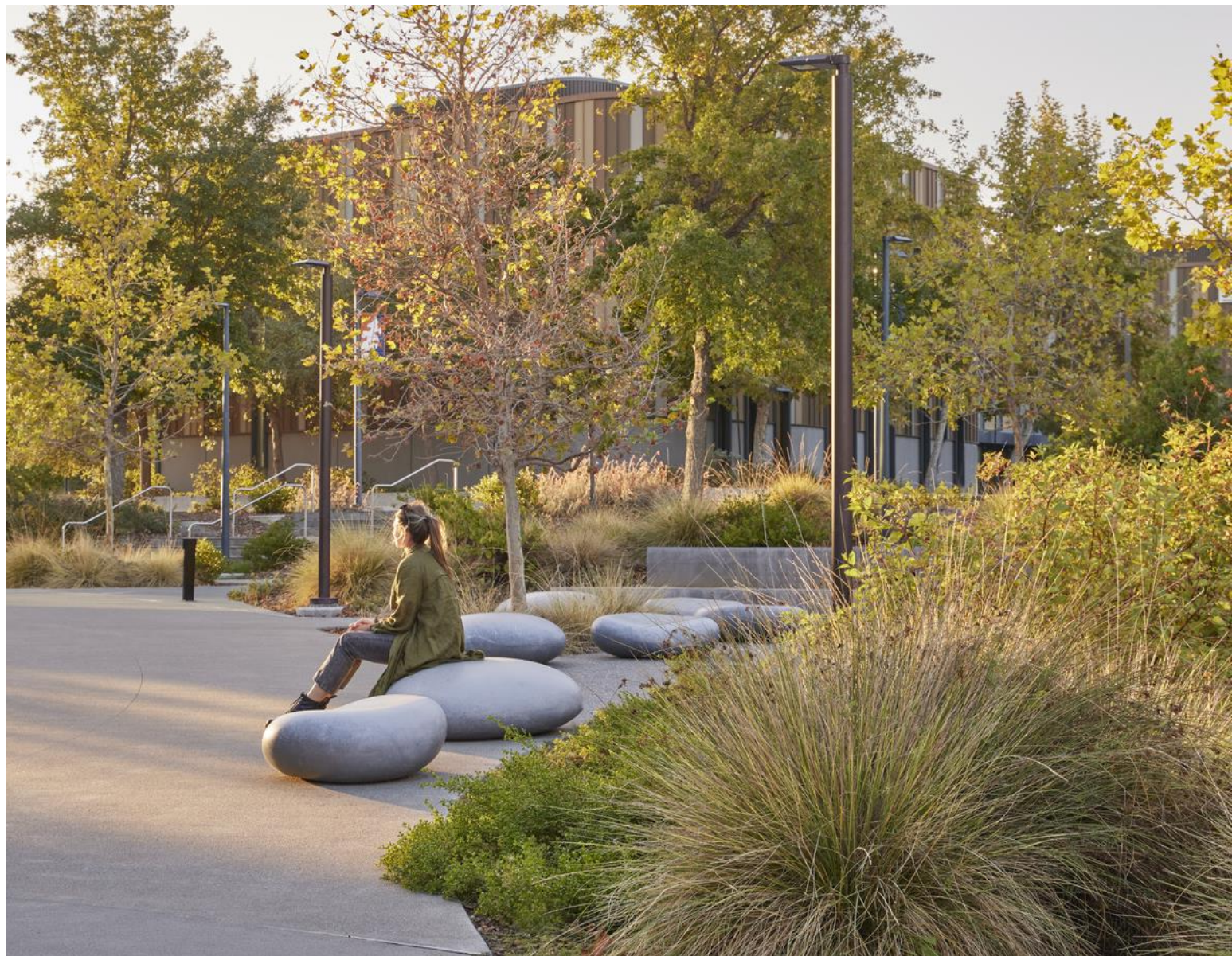
Site Features

1. Drop-Off Area
2. Rest Points
3. Building Entry
4. Amphitheater Seating

Drop-Off Area



The drop-off area introduces the design theme of flow, connecting visitors to a path that brings visitors to the building entrance. The area features native planting, seating, and special paving to provide a sense of arrival.



Rest Points



Rest points along the path with site furnishings such as seating and interpretive signage, invite pedestrians to pause for a few moments while also creating destinations that pull visitors along the path.



Building Entry



An entry plaza flows into the building lobby connecting the interior and the exterior



Amphitheater Seating



A small amphitheater, framed by a change in paving, offers a space to pause longer – perhaps for lunch, a coffee break, or a meeting outdoors when the weather is nice.



Next Steps

→ Task 5.13	142 days	Wed 8/3/22	Thu 2/16/23
→ Project Kickoff	0 days	Wed 8/3/22	Wed 8/3/22
→ Workshop 1: Program Confirmation	0 days	Wed 8/10/22	Wed 8/10/22
→ Data Collection/Design Criteria	8 days	Thu 8/11/22	Mon 8/22/22
→ Preliminary Layout Alternatives	16 days	Tue 8/23/22	Tue 9/13/22
→ Interim Review w/ City (Preliminary Alts)	0 days	Wed 9/14/22	Wed 9/14/22
→ Develop Concept Alternatives	16 days	Wed 9/14/22	Wed 10/5/22
→ Interim Review w/ City (Confirm Alts)	0 days	Tue 10/4/22	Tue 10/4/22
→ Class 5 OPCC	5 days	Thu 10/6/22	Wed 10/12/22
→ Workshop 2: Alternatives Analysis	0 days	Wed 10/12/22	Wed 10/12/22
→ Develop Schematic Alternatives	35 days	Thu 10/13/22	Wed 11/30/22
→ Interim Review w/ City (Lab Modules)	0 days	Wed 10/26/22	Wed 10/26/22
→ Interim Review w/ City (LEED Charette)	0 days	Wed 11/9/22	Wed 11/9/22
→ Workshop 3: Architectural Design	0 days	Wed 11/30/22	Wed 11/30/22
→ Develop Draft 30% Drawings	15 days	Thu 12/1/22	Wed 12/21/22
→ Interim Review /w City (FF&E)	0 days	Wed 12/14/22	Wed 12/14/22
→ Class 4 OPCC	10 days	Thu 12/22/22	Wed 1/4/23
→ Interim Review w/ City (TBD)	0 days	Wed 1/4/23	Wed 1/4/23
→ Develop Draft TM	15 days	Thu 1/5/23	Wed 1/25/23
→ Workshop 4: 30% Design Review	0 days	Wed 1/25/23	Wed 1/25/23
→ City Review	10 days	Thu 1/26/23	Wed 2/8/23
→ Final TM	6 days	Thu 2/9/23	Thu 2/16/23

Thank You!

Questions?

