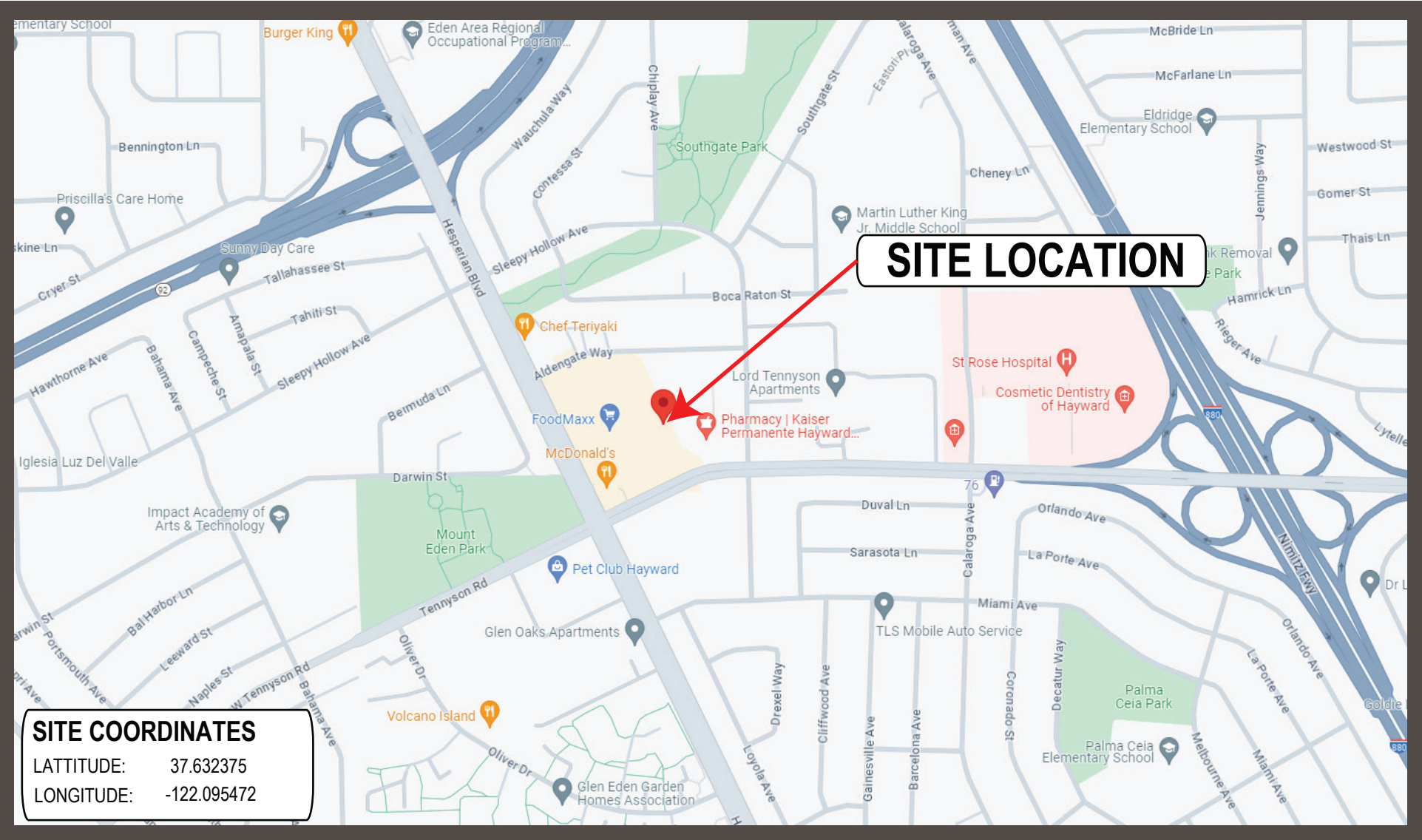
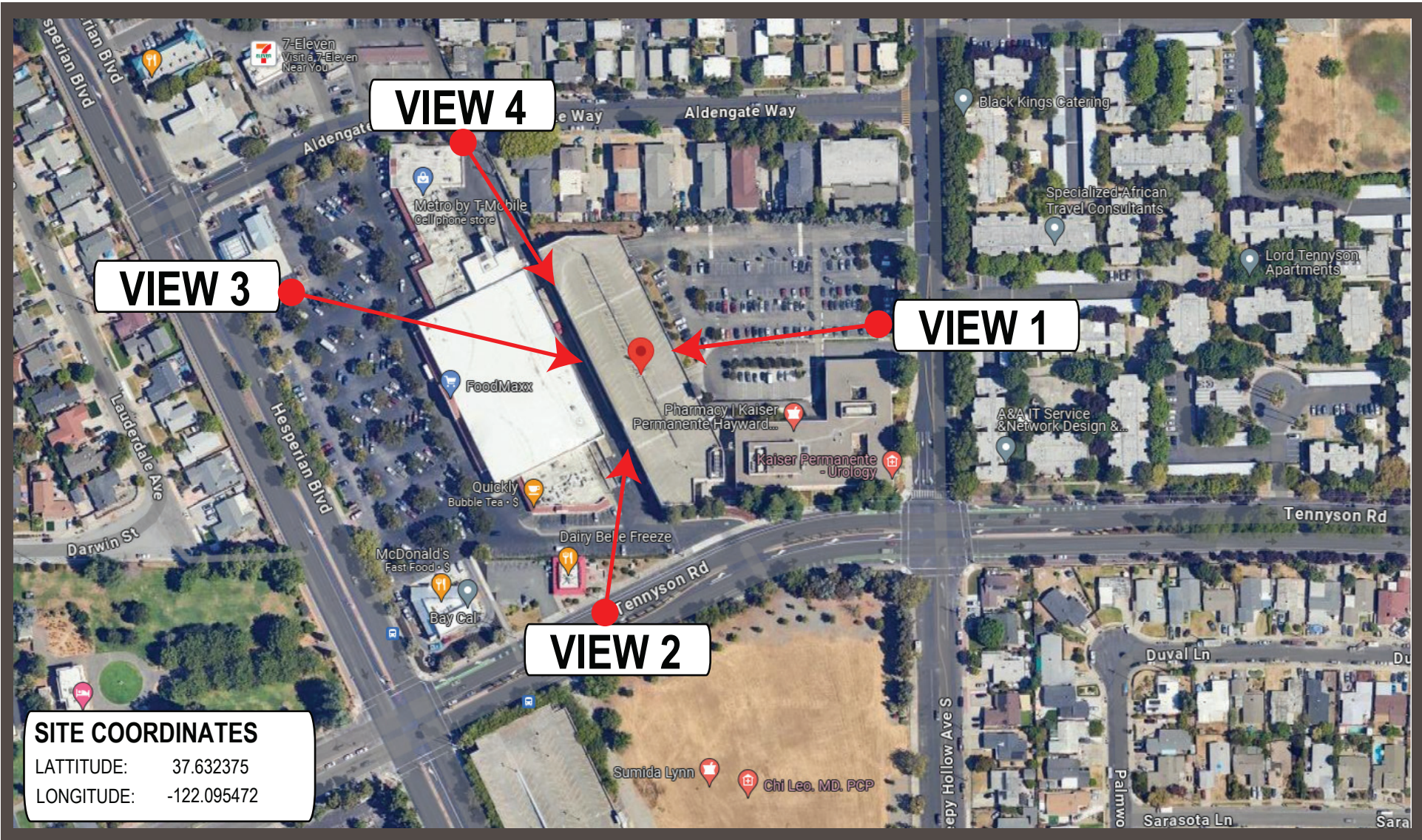




PROPOSED SITE LOCATION



CCL00494

HAYWARD 3

27303 SLEEPY HOLLOW AVENUE

HAYWARD, CA 94545



Pramira

NETWORK EVOLUTION SIMPLIFIED

404 N BERRY ST.,  
BREA, CA 92821





EXISTING MONOPOLE  
AND (6) EXISTING AT&T  
PANEL ANTENNAS  
TO BE REMOVED  
AND REPLACED

EXISTING



SECTOR B:  
(3) PROPOSED AT&T  
PANEL ANTENNAS  
MOUNTED ON  
PROPOSED MONOPOLE

SECTOR C:  
(3) PROPOSED AT&T  
PANEL ANTENNAS  
MOUNTED ON  
PROPOSED MONOPOLE

SECTOR A:  
(3) PROPOSED AT&T  
PANEL ANTENNAS  
MOUNTED ON  
PROPOSED MONOPOLE

PROPOSED

CCL00494  
HAYWARD 3  
27303 SLEEPY HOLLOW AVE.  
HAYWARD, CA 94545

VIEW 1: LOOKING WEST THROUGH  
PARKING LOT OFF SLEEPY HOLLOW AVENUE



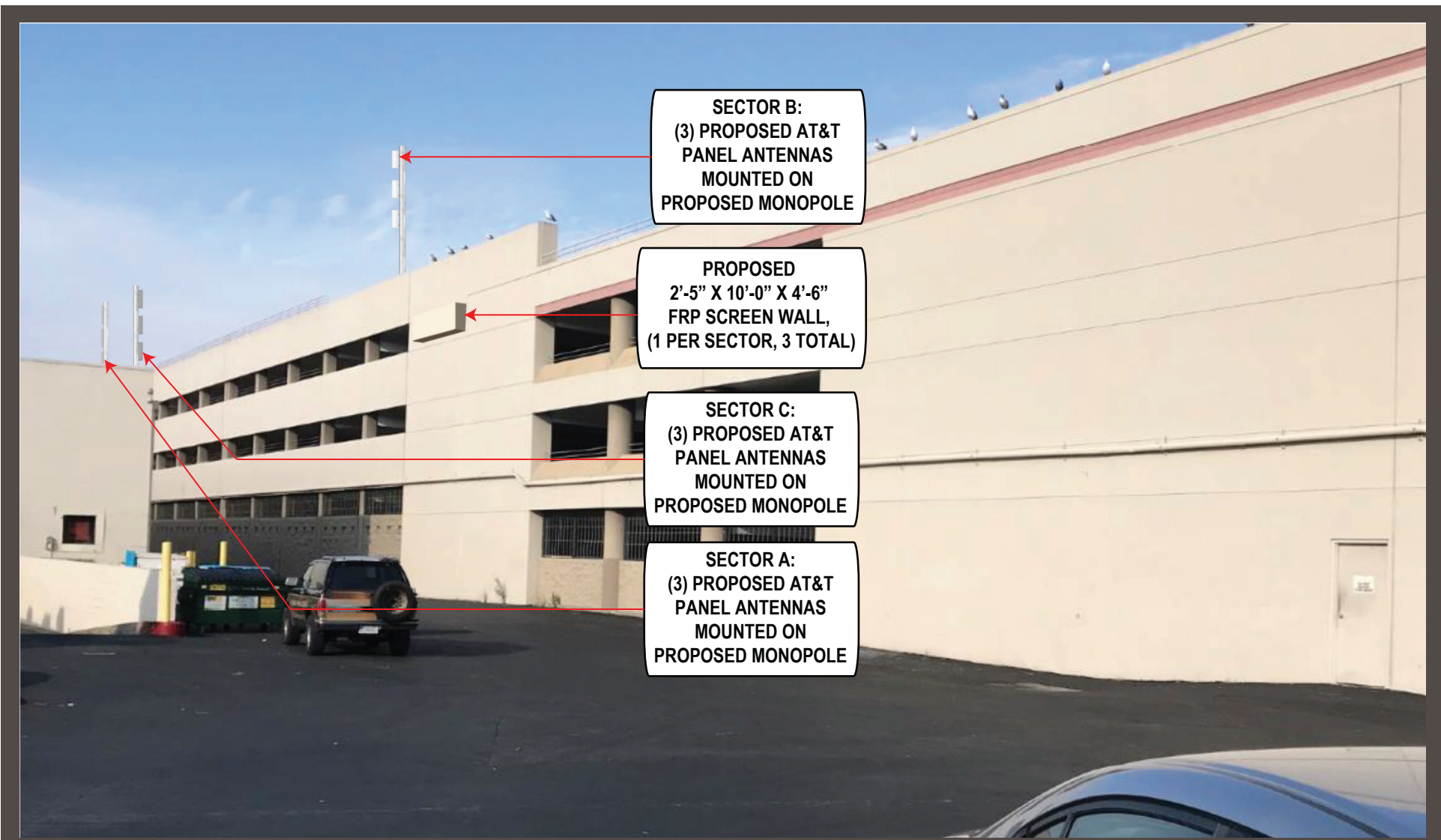
**Pramira**  
NETWORK EVOLUTION SIMPLIFIED

404 N BERRY ST.,  
BREA, CA 92821





EXISTING



PROPOSED

CCL00494  
HAYWARD 3  
27303 SLEEPY HOLLOW AVE.  
HAYWARD, CA 94545

VIEW 2: LOOKING NORTH FROM  
TENNISON SOUTH



**Pramira**  
NETWORK EVOLUTION SIMPLIFIED

404 N BERRY ST.,  
BREA, CA 92821





EXISTING



PROPOSED

CCL00494  
HAYWARD 3  
27303 SLEEPY HOLLOW AVE.  
HAYWARD, CA 94545

VIEW 3: LOOKING SOUTHEAST FROM  
ALDENGATE WAY



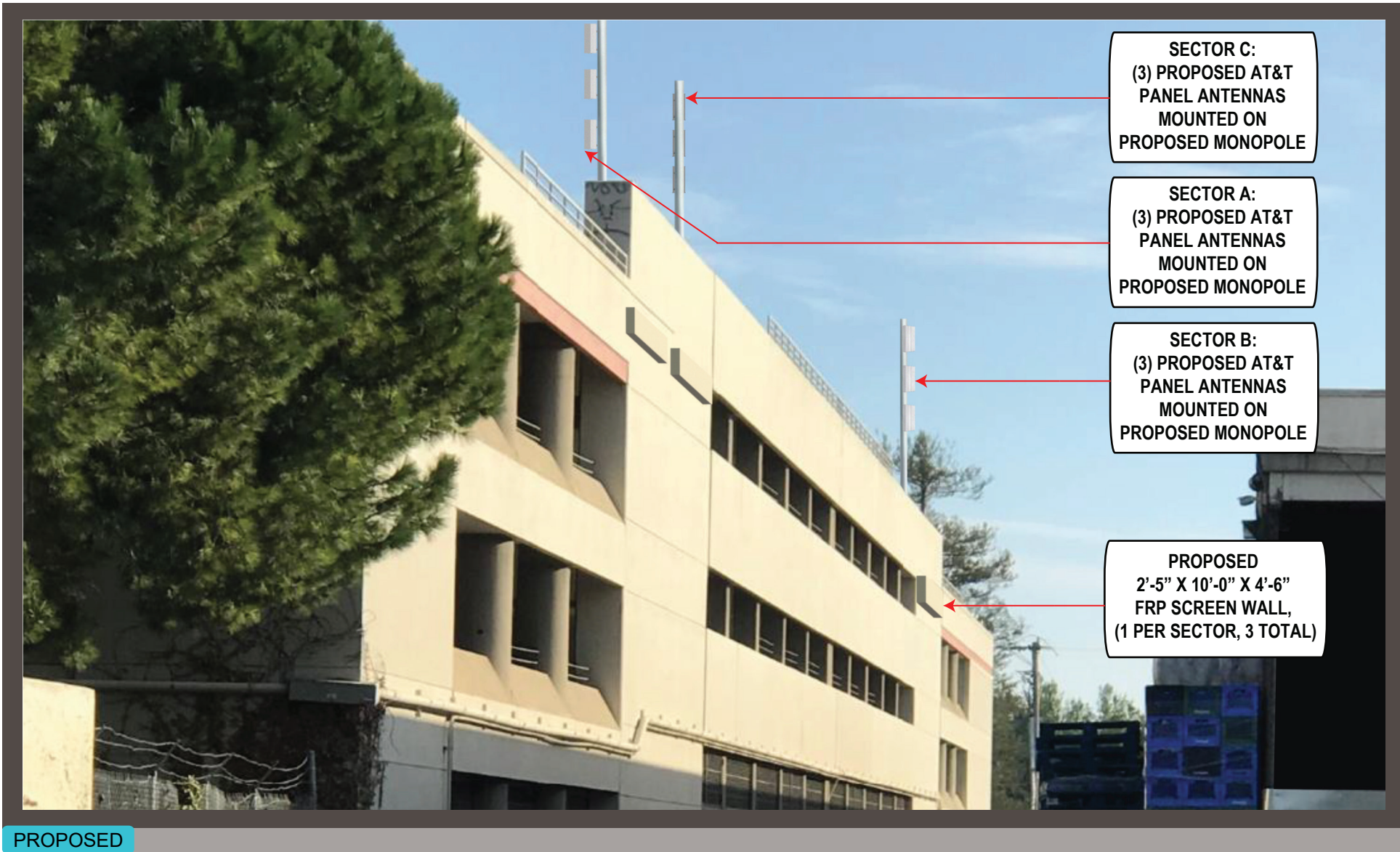
**Pramira**  
NETWORK EVOLUTION SIMPLIFIED

404 N BERRY ST.,  
BREA, CA 92821






EXISTING



PROPOSED

<p><b>CCL00494</b> <b>HAYWARD 3</b> 27303 SLEEPY HOLLOW AVE. HAYWARD, CA 94545</p>	<p><b>VIEW 4: LOOKING SOUTH FROM ALDENGATE WAY</b></p>	 <p><b>Pramira</b> NETWORK EVOLUTION SIMPLIFIED</p> <p>404 N BERRY ST., BREA, CA 92821</p>
--	--	---