



**Council Infrastructure & Airport Committee,
City of Hayward**

**Capital Projects Committee,
Hayward Area Recreation & Park District**

Joint Agency Discussion of La Vista Park Project and Coordination Opportunities on Future Park Projects

February 05, 2026



La Vista Park

Construction Phase Coordination

- Design effort and financing
- Transition to construction
- Continue City and HARD collaboration
- Weekly coordination meeting with full project team
- Ongoing communication on cost, schedule, and field issues

La Vista Park

Value Engineering Overview

- Keyway construction value engineering developed with Design Team & Contractor
- Focus on maintaining approved park features, usability, and safety
- Approx. \$5.2M targeted in project savings
- Revised Construction Contract approx. \$29M

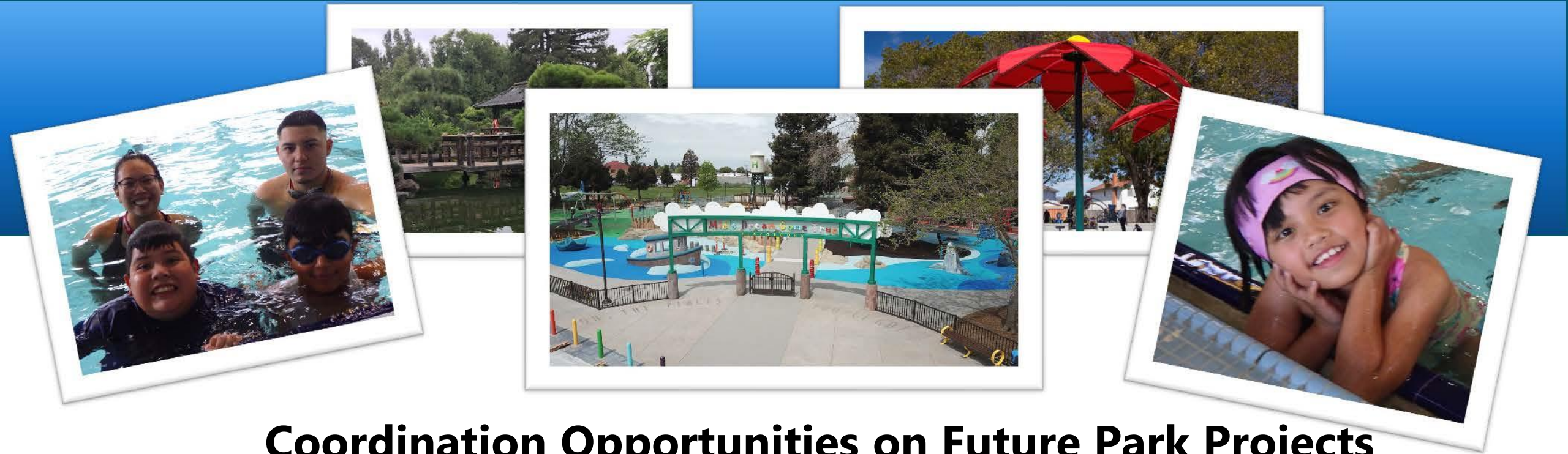
La Vista Park

Project Timeline

- Preconstruction meeting in February
- Meeting with Building Trades in February
- Anticipated start of construction mid March, 300 working days, completion estimated by Summer 2027



Questions and Discussion



Coordination Opportunities on Future Park Projects

Hayward Area Recreation & Park District

Special Council Infrastructure &
Airport Committee Meeting
February 5, 2026



Foothill Trail

H.A.R.D. Board of Directors approved the Foothill Trail Master Plan in November 2020

The master plan provides guidance to be used as part of the development and approval process for undeveloped properties, including Caltrans 238 bypass parcels

When completed, the future trail will provide a 6-mile route for travel and recreation



Foothill Trail Master Plan



Legend

- | | | | | | |
|-------------------|---------------------|--|--|--|------------------|
| 238 Parcel Groups | Regional Park | Planned Trail | A-2 Paved Shared Use Trails (ADA-Accessible) | B-3 Enhanced Sidewalk + Class IV Separated Bikeway | Streets |
| HARD Park | Golf Course | Existing Trail | B-1 Enhanced Sidewalk + Class III Bikeway (Sharrows) | BART | Equestrian Route |
| Planned Park | Proposed Open Space | A-1 Unpaved Shared Use Trails (Not ADA-Accessible) | B-2 Enhanced Sidewalk + Class II Bike Lane | Highway | Streams |



Foothill Trail from A Street to Grove Way



A small portion has been constructed linking A Street to the Japanese Gardens, Hayward Area Senior Center, and Douglas Morrisson Theatre

A Habitat Conservation Fund grant has been awarded for the continuation of that trail segment to Grove Way through Caltrans PG8

Community meeting Sat Feb. 21 from 10am-noon at Hayward Area Senior Center for concept plan review



Eden Greenway

The Eden Greenway is a 2-mile linear park through a PG&E utility corridor

H.A.R.D Leases the property for recreation purposes

The northern end is anchored by the Hayward Community Garden – renovated in 2020 to provide 70 garden plots, an outdoor education area, and other support amenities



Eden Greenway



6 Pickleball Courts were added to Southgate Park in 2022

Southgate Playground was renovated in 2024

Disc golf was added to the section near Southgate Park in 2025

The paving in the section at Cypress & Harder was repaved in 2025 to help support HPN activities at that location

The play area at Berry Avenue will be renovated in 2026 as part of our Playground Renovation project

The basketball courts near Contessa & Cypress will be renovated in 2026 as part of our Basketball & Tennis Court Renovation project



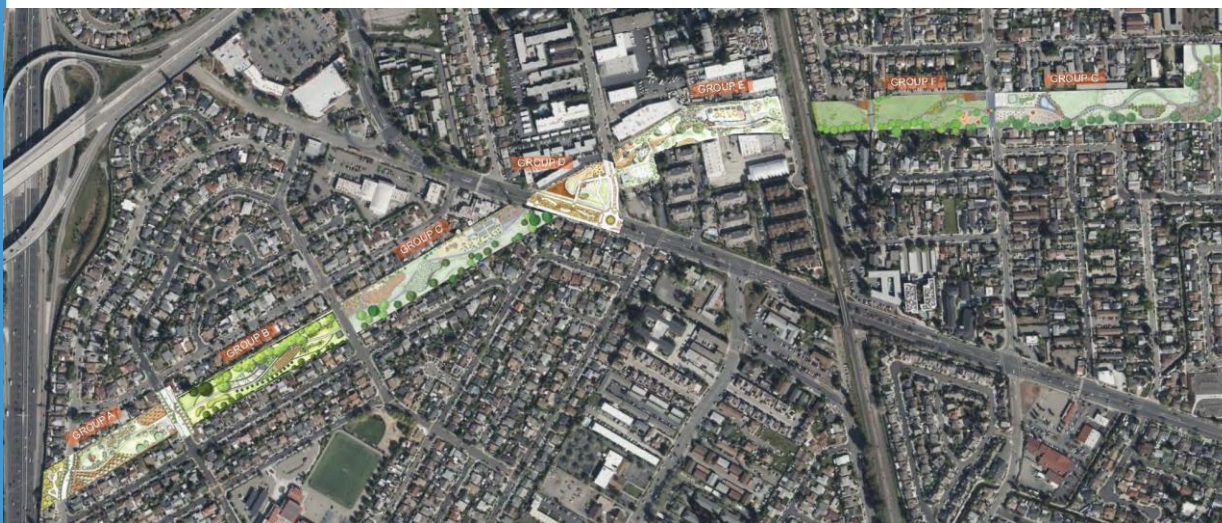


Eden Greenway

In 2024, HARD worked with landscape architectural students from CalPoly SLO to develop concept plans to activate the greenway

The project included City staff to coordinate stormwater management as part of the project goals

HARD signed a Letter of Support for the City's Caltrans Sustainable Planning Grant application for an active transportation link and the improvement of street crossings along the greenway



A vibrant, artistic rendering of a park scene. In the foreground, two women are walking away from the viewer on a reddish-brown path. One is wearing a brown top and a light-colored hijab, and the other is wearing a blue t-shirt and light blue jeans. Further down the path, a woman in a white t-shirt and black shorts is jogging. To the right, a long, modern slide with a wooden frame and metal tracks is visible, with several children playing on it. In the background, there is a traditional wooden playground with swings and a climbing structure. The park is filled with lush green trees and grass, and the sky is bright blue with a few clouds. The overall atmosphere is lively and family-friendly.

Questions and Discussion